



For Lease
7,200± SF



Retail in
Hernando
Mississippi

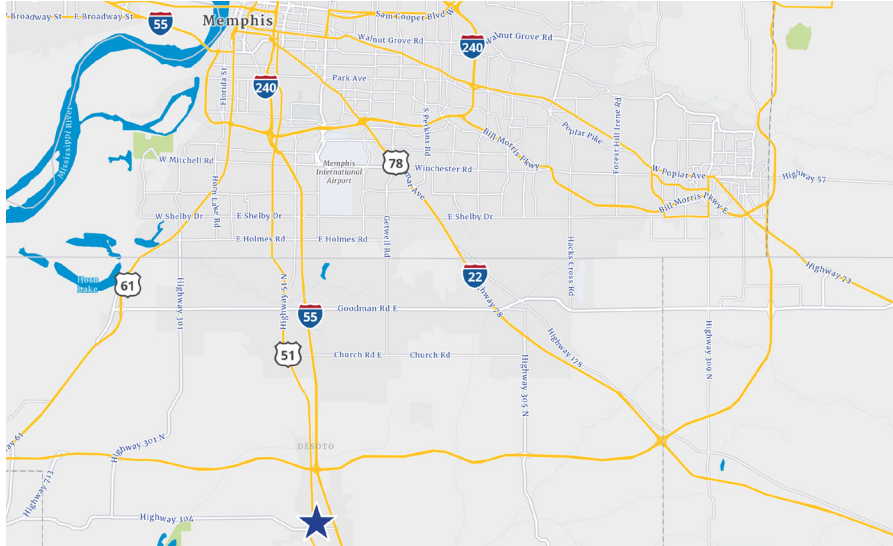
View Online

colliers.com/memphis

12 E. Commerce St.
Hernando, MS 38632

ED THOMAS, CCIM
901.312.4912
ed.thomas@colliers.com

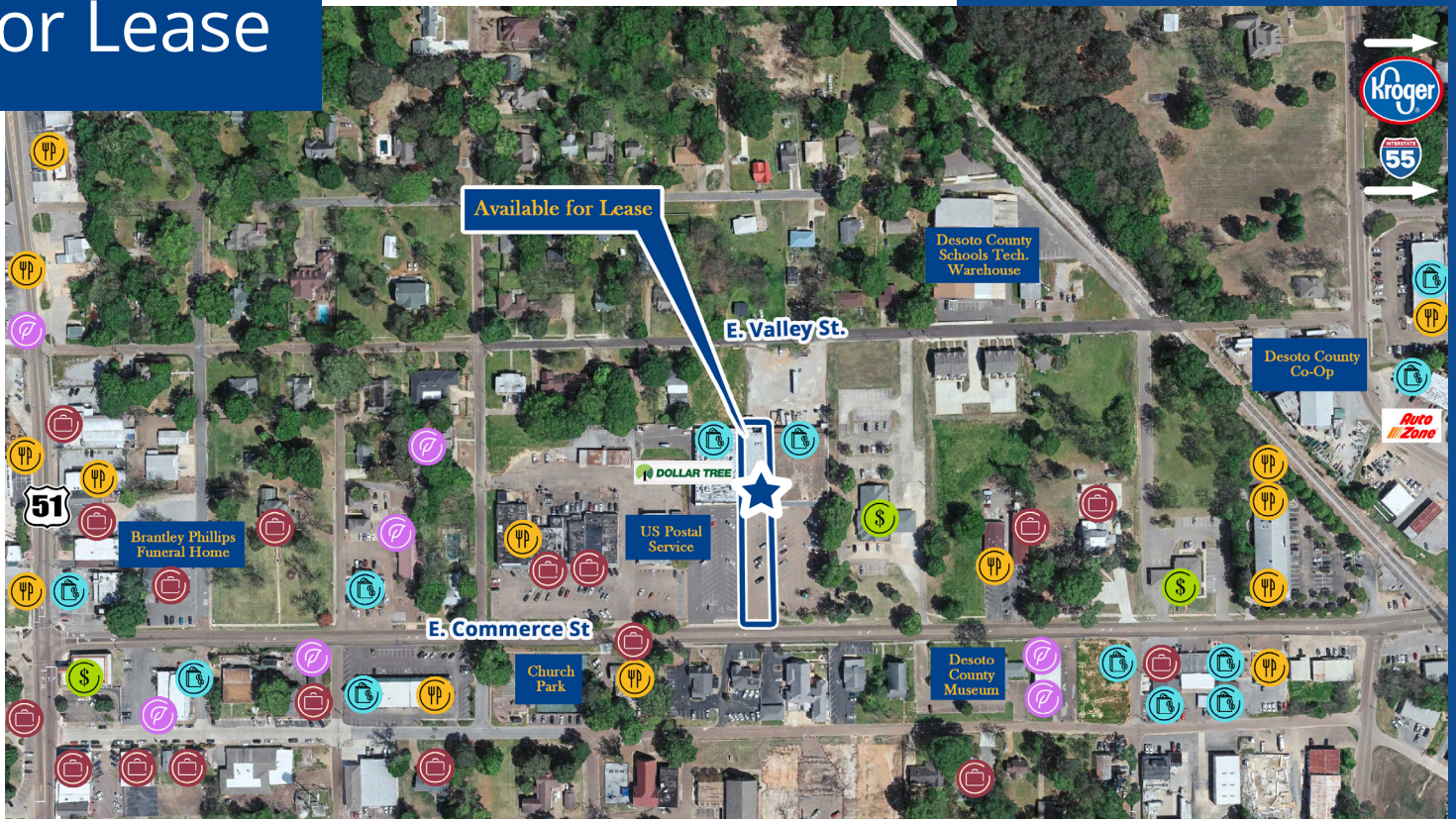
ANDREW PHILLIPS, CCIM, SIOR
901.312.4916
andrew.phillips@colliers.com



COLLIERS
6363 Poplar Avenue, Suite 220
Memphis, TN 38119
901 375 4800

Copyright © 2023 Colliers International. Information herein has been obtained from sources deemed reliable, however its accuracy cannot be guaranteed. The user is required to conduct their own due diligence and verification.

For Lease



PROPERTY FEATURES

- DeSoto County submarket
- Zoning: Shopping Center Commercial
- 7,200± SF
- 0.61± AC
- Located in the heart of Hernando
- Ample parking with great ingress/egress
- Easy access to Hwy. 51
- Easy access to I-55

Rent - \$9.50 PSF NNN

AREA DEMOGRAPHICS



Population

1-Mile: 5,339
3-Miles: 19,229
5-Miles: 25,253



Daytime Employees

1-Mile: 7,224
3-Miles: 16,803
5-Miles: 20,464



Average HH Income

1-Mile: \$80,296
3-Miles: \$94,515
5-Miles: \$98,542



Households

1-Mile: 2,020
3-Miles: 6,899
5-Miles: 9,025

ED THOMAS, CCIM

901.312.4912
ed.thomas@colliers.com

ANDREW PHILLIPS, CCIM, SIOR

901.312.4916
andrew.phillips@colliers.com

DeSoto County is the

fastest growing

county in Mississippi

usa.com

COLLIERS

6363 Poplar Avenue, Suite 220
Memphis, TN 38119
901 375 4800