

FOR LEASE

1124 Hartman Lane Shiloh, Illinois 62221



PROFESSIONAL OFFICE SPACE

- Professional Office Suites Available
- 1,395 SF Available on elevator served lower level (Suite LL4)
- 1,790 SF Available on first floor (Suite 100)
- 2,296 SF Coming Available on first floor (Suite 120)
- Shared Conference/ Meeting Room
- Professionally Managed Building
- Great location on Hartman Lane just south of Frank Scott Pkwy
- **Lease Rate Lower Level: \$18.00 PSF**
- **Lease Rate First Level: \$22.00 PSF**
- Full Service Lease - Landlord pays for Taxes, Insurance, Maintenance, and Utilities
- Broker has Ownership Interest

For information, contact:

DAVE KUNKEL

Broker

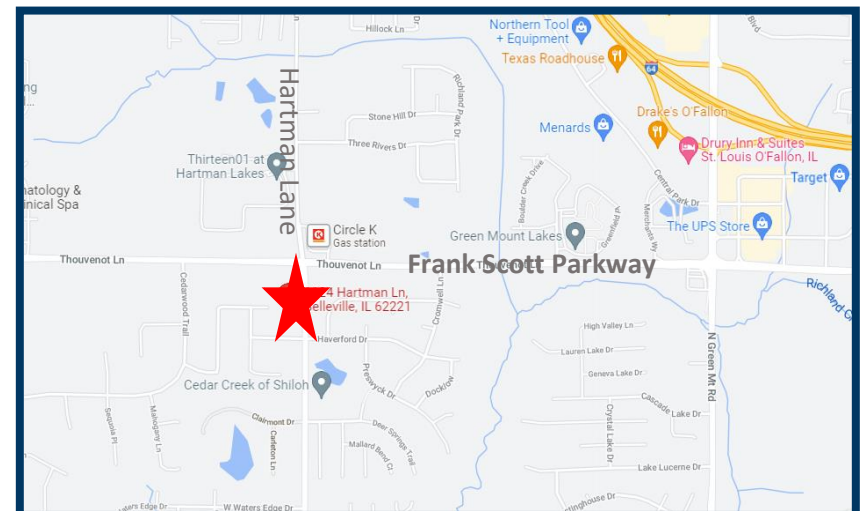
DAVE@CHOOSEKWG.COM

618.202.4500 OFFICE

618.977.1846 MOBILE

784 WALL STREET, SUITE 150

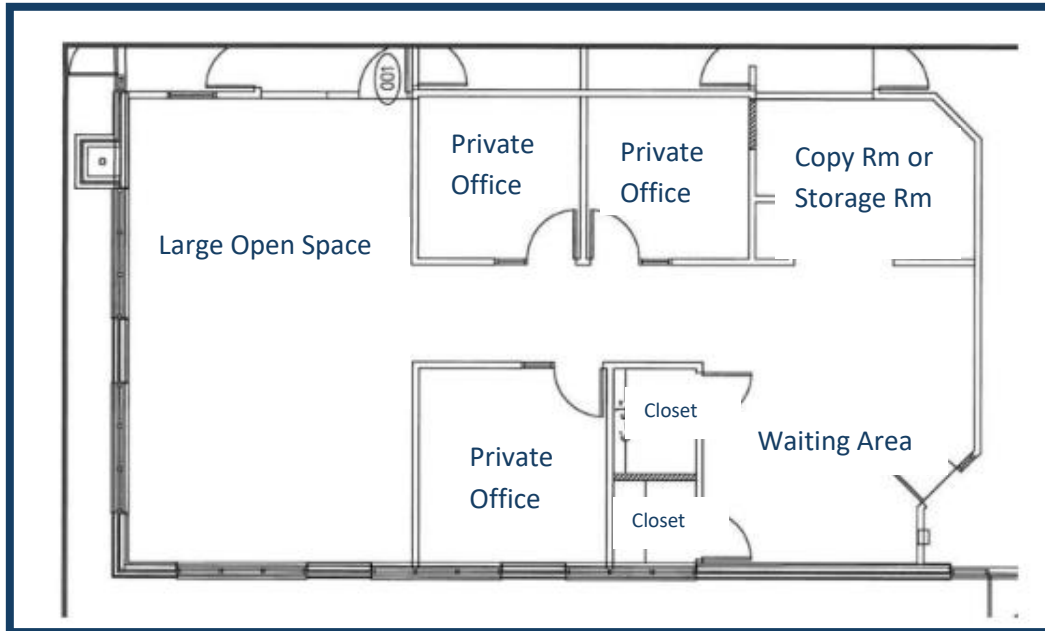
O'FALLON, IL 62269



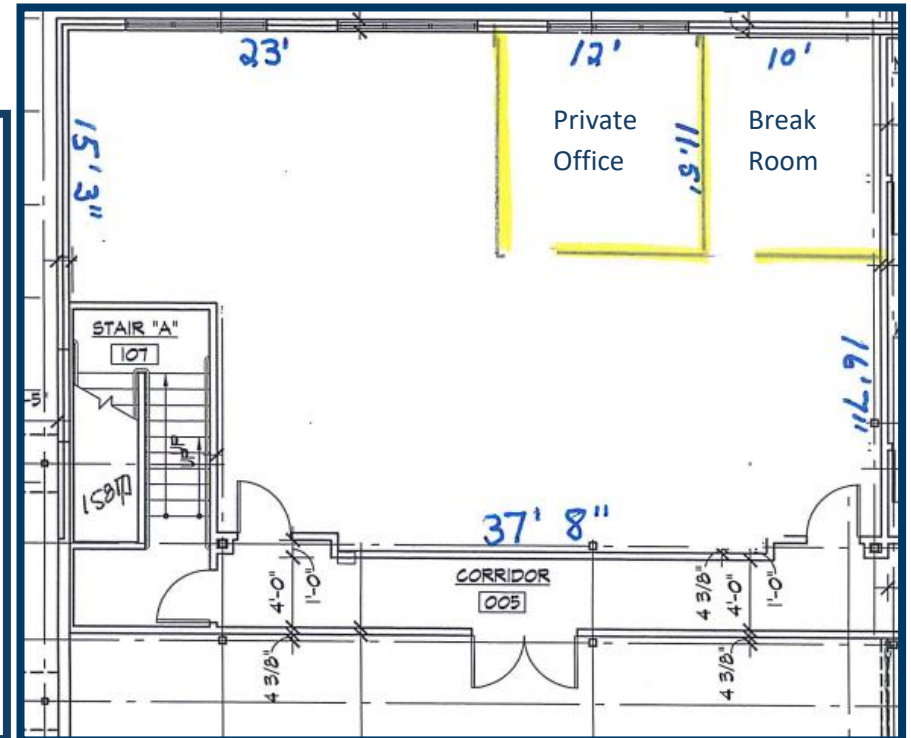
FLOOR PLANS



1124 Hartman Lane
Shiloh, Illinois 62221



1,790 SF (SUITE 100) First Floor

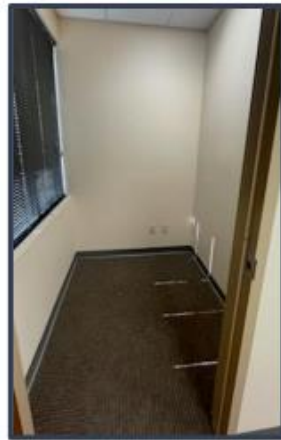


1,395 SF (SUITE LL4) Lower Level

PHOTOS



1124 Hartman Lane
Shiloh, Illinois 62221



SUITE 100-Main Level

1,790 SF

Waiting Room, IT/Closet,
Printer Room, Three (3) Private
Offices, Large Open Area