

Industrial | For Lease

CBRE

Orlando Central Park

2100 Premier Row
Orlando, FL 32809



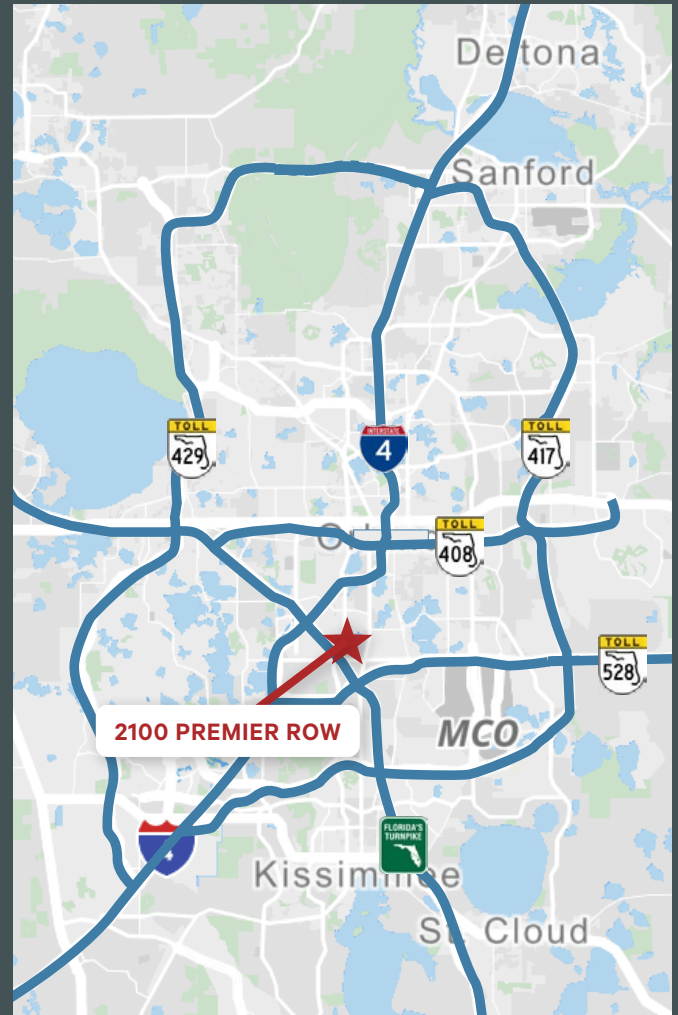
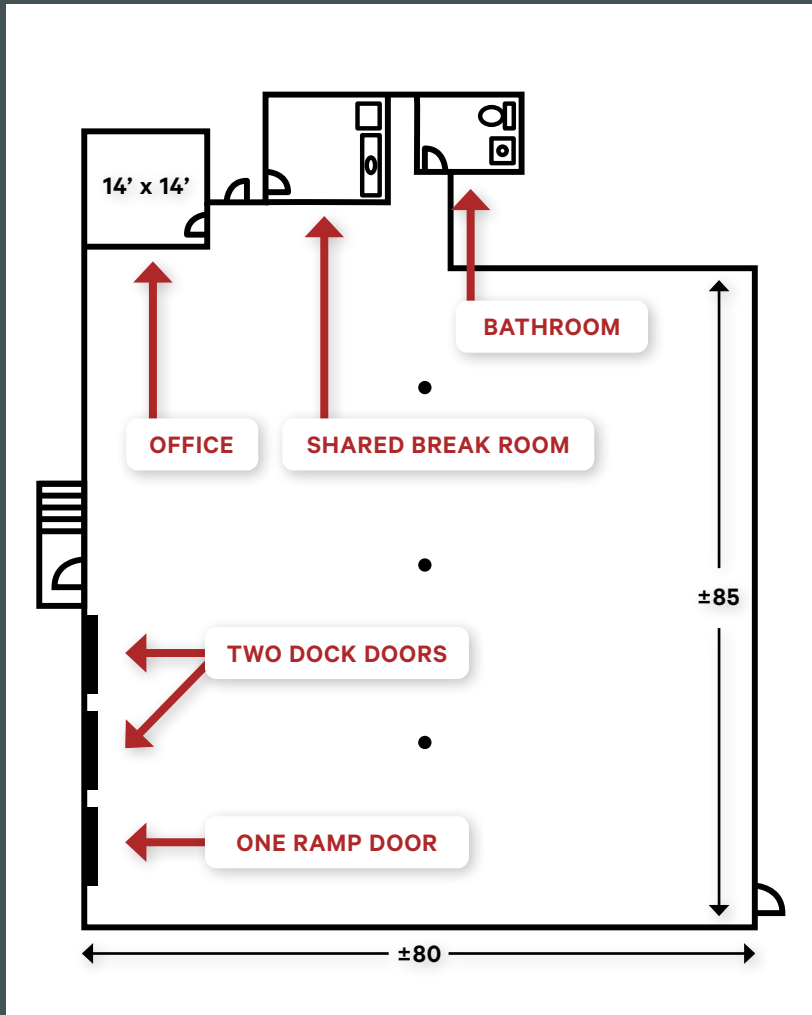
Orlando Central Park

2100 Premier Row, Orlando, FL 32809

For Lease

SUITE FEATURES

- + ±7,000 SF Available
- + Two Dock-High Doors
- + One Ramp Door
- + New LED Lights
- + ±200 SF Office
- + 10' x 10' Doors
- + 16' Clear Height
- + 3-Phase Power



Contact Us

Cameron Thomas

Senior Associate
+1 407 404 5078
cameron.thomas@cbre.com

Alex Eastwood

Senior Associate
+1 407 404 5097
alex.eastwood@cbre.com

Jose Rivera

Associate
+1 407 404 5067
jose.rivera1@cbre.com

© 2025 CBRE, Inc. All rights reserved. This information has been obtained from sources believed reliable, but has not been verified for accuracy or completeness. You should conduct a careful, independent investigation of the property and verify all information. Any reliance on this information is solely at your own risk. CBRE and the CBRE logo are service marks of CBRE, Inc. All other marks displayed on this document are the property of their respective owners, and the use of such logos does not imply any affiliation with or endorsement of CBRE. Photos herein are the property of their respective owners. Use of these images without the express written consent of the owner is prohibited.

CBRE