



FOR LEASE | 1,624 SF

OFFICE | SUITE 400 | \$2.00 PSF/FS

14011 VENTURA BLVD | SHERMAN OAKS, CA 91423

STAN GERSON
Executive Vice President
818.489.2180
sgerson@spectrumcre.com
CA DRE Lic. #00797484

No warranty, express or implied, is made as to the accuracy of the information contained herein. This information is submitted subject to errors, omission, change of price, rental or other conditions, withdrawal without notice, and is subject to any special listing conditions imposed by our principals. Cooperating brokers, buyers, tenants and other parties who receive this document should not rely on it, but should use it as a starting point of analysis, and should independently confirm the accuracy of the information contained herein through a due diligence review of the books, records, files and documents that constitute reliable sources of the information described herein. Spectrum Commercial Real Estate, Inc. CA DRE #02042805

SPECTRUM
COMMERCIAL REAL ESTATE, INC.
spectrumcre.com | 818.252.9900

FOR LEASE | 1,624 SF

FEATURES / HIGHLIGHTS

14011 VENTURA BLVD, SUITE 400 | SHERMAN OAKS, CA 91423

PROPERTY FEATURES



\$3,248/MONTH
(\$2.00 PSF)



PARKING - \$85
PER SPACE



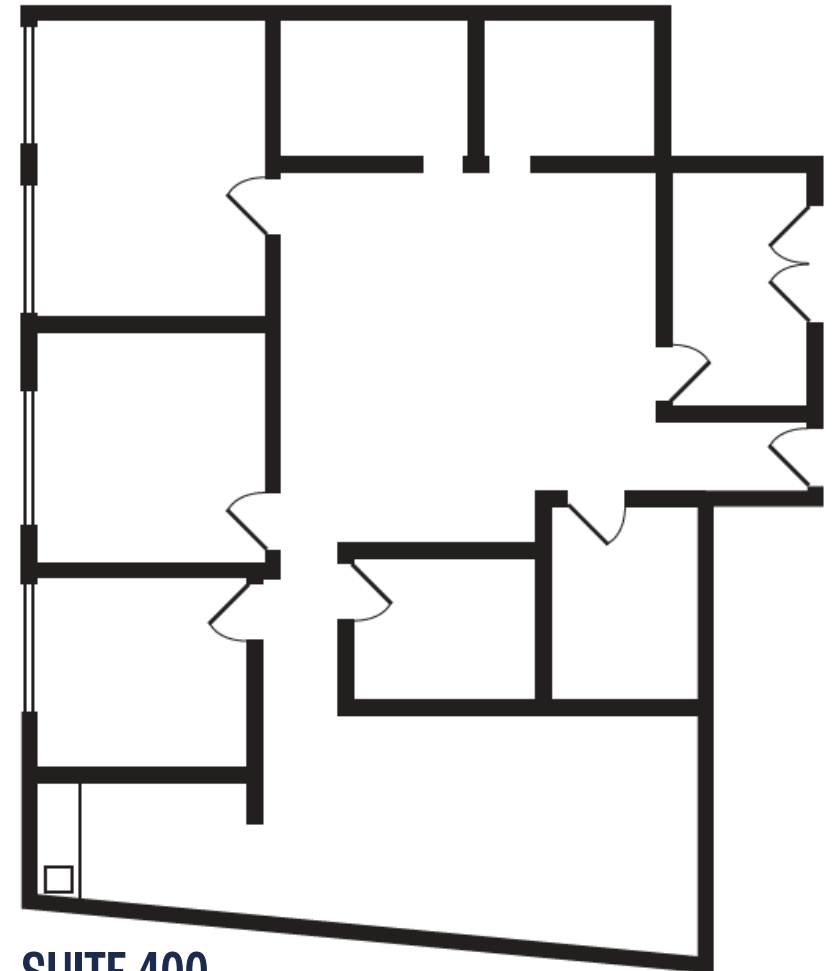
3-5 YEAR
CONTRACT



4TH FLOOR
OFFICE SPACE

LOCATION HIGHLIGHTS

- Easy access to 101 freeway
- Many restaurants in walking distance
- On Ventura Boulevard between Beverly Glen Boulevard and Woodman Avenue



SUITE 400

STAN GERSON

Executive Vice President

818.489.2180

sgerson@spectrumcre.com

CA DRE Lic. #00797484

No warranty, express or implied, is made as to the accuracy of the information contained herein. This information is submitted subject to errors, omission, change of price, rental or other conditions, withdrawal without notice, and is subject to any special listing conditions imposed by our principals. Cooperating brokers, buyers, tenants and other parties who receive this document should not rely on it, but should use it as a starting point of analysis, and should independently confirm the accuracy of the information contained herein through a due diligence review of the books, records, files and documents that constitute reliable sources of the information described herein. Spectrum Commercial Real Estate, Inc. CA DRE #02042805

SPECTRUM

COMMERCIAL REAL ESTATE, INC.

spectrumcre.com | 818.252.9900