

SAN FRANCISCO, CA 94107

# 517 6th St

**FOR LEASE**

**+/- 5,400 SF**  
Standalone Building

**SCOTT MASON**

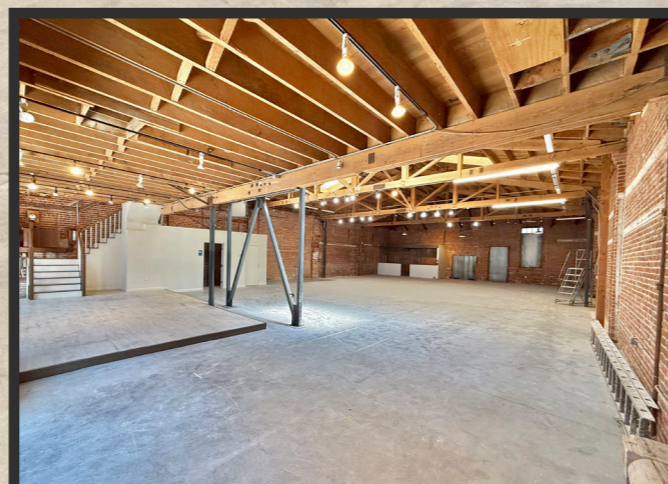
President | Calco Commercial  
Email: [scott@calco-sf.com](mailto:scott@calco-sf.com)  
Cell: 415.215.1937  
DRE #01036610

**DAULTON JEFFERIES**

Associate | Calco Commercial  
Email: [daulton@calco-sf.com](mailto:daulton@calco-sf.com)  
Cell: 209.326.2358  
DRE #02261417

**GARY BOITANO**

Cushman & Wakefield  
Email: [gary.boitano@cushwake.com](mailto:gary.boitano@cushwake.com)  
Cell: 650.401.2122  
DRE #01902693



# HIGHLIGHTS

| 517 6th St

- +/- 5,400 RSF Flex Office for Lease
- Newly Renovated Mezzanine Office
- 5 On-Site Parking Spots
- Exposed Brick and Timber Creative Aesthetic
- Pristine Visibility and Windowline
- Newly Paved Secured Parking Lot
- High Ceilings
- Skylights Throughout



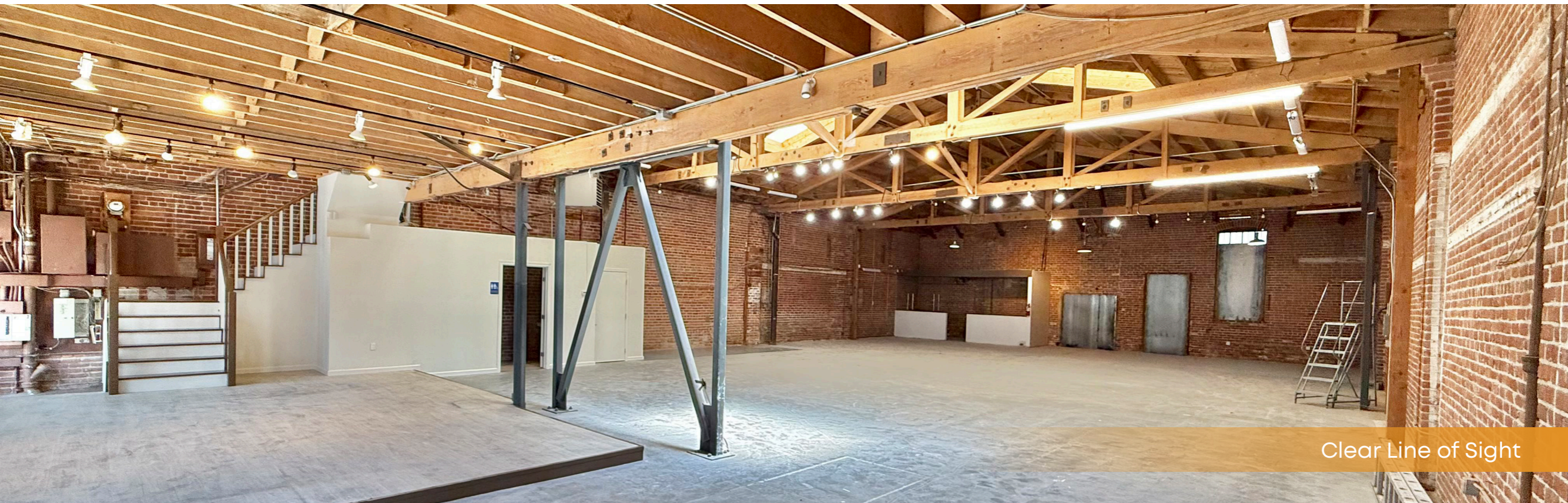
**GALLERY**  
| 517 6th St



Bright Updated Office Space



Abundant Natural Light



Clear Line of Sight

# 5 GATED PARKING SPOTS INCLUDED

| 517 6th St

 **CALCO**  
COMMERCIAL, INC.



# NEWLY RENOVATED MEZZANINE OFFICE

| 517 6th St

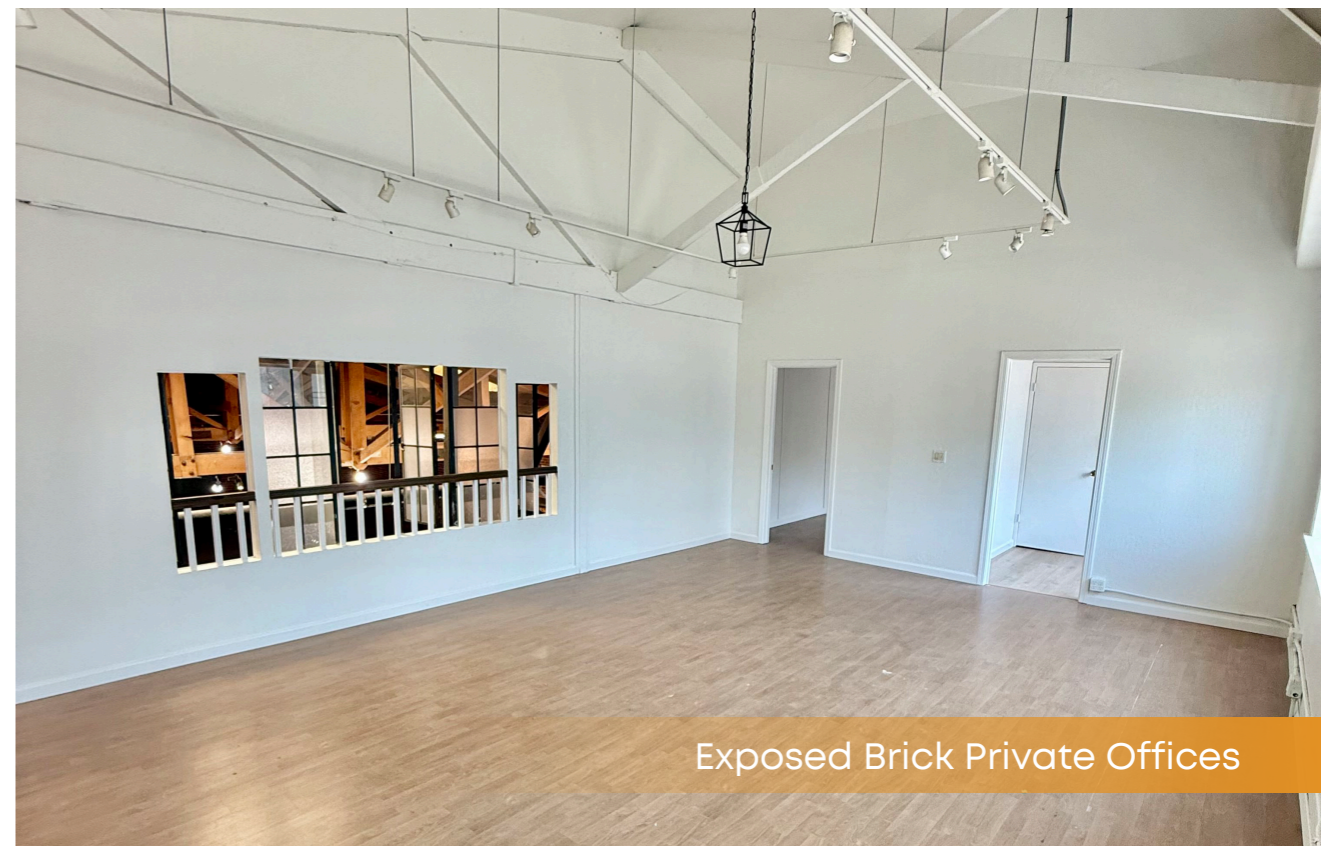
 **CALCO**  
COMMERCIAL, INC.



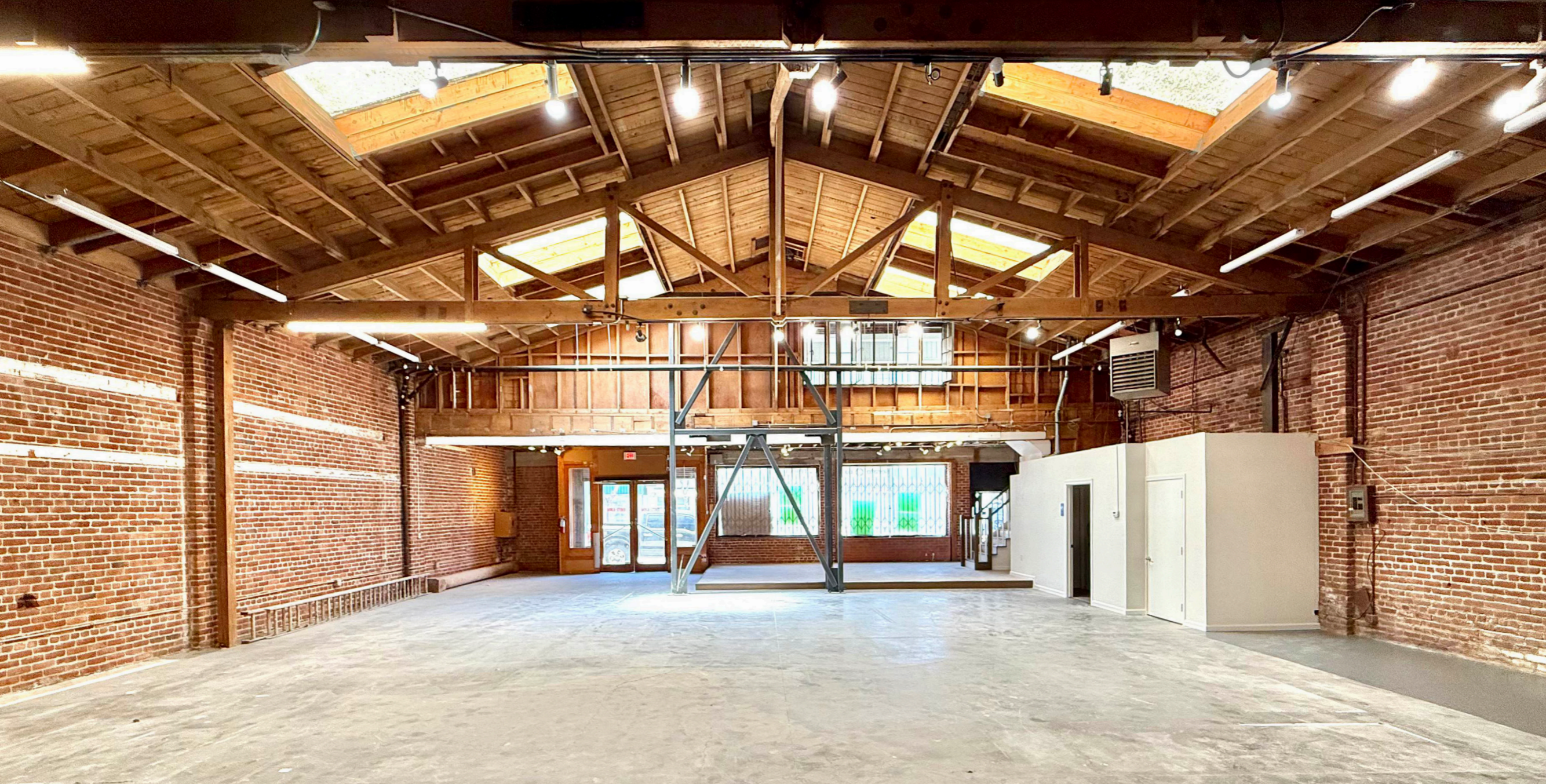
Clean Finishes



Bright Workspace



Exposed Brick Private Offices



**SCOTT MASON**

President | Calco Commercial  
Email: [scott@calco-sf.com](mailto:scott@calco-sf.com)  
Cell: 415.215.1937  
DRE #01036610

**PIONEERING REAL ESTATE SOLUTIONS WITH PROVEN EXPERTISE**

**DAULTON JEFFERIES**

Associate | Calco Commercial  
Email: [daulton@calco-sf.com](mailto:daulton@calco-sf.com)  
Cell: 209.326.2358  
DRE #02261417

**GARY BOITANO**

Cushman & Wakefield  
Email: [gary.boitano@cushwake.com](mailto:gary.boitano@cushwake.com)  
Cell: 650.401.2122  
DRE #01902693

Calco Commercial, founded in 2011 by Scott Mason, brings over 35 years of experience and 2,500+ transactions, totaling over \$2.2 billion in sales and leases. Specializing in leasing and sales of commercial real estate in the San Francisco Bay Area and nationwide, we consistently rank as a top-producing firm. With deep knowledge of the Bay Area market, our team offers clients over three decades of expertise and exceptional customer service, providing the tools and guidance to navigate the ever-changing commercial real estate landscape.