

# For sale or lease

2620 Fleur Drive, Des Moines, Iowa 50321

Sale price: Negotiable | Lease rate: Negotiable

# ±10,816 RSF

Office space available off Fleur Drive



## Property specifications

- Est. OPEX: Available upon request
- Located minutes to CBD and DSM Int'l Airport off Fleur Drive
- Ample parking field in front of building
- Two story block construction
- Currently built out with classroom setting (11 rooms)
- Newly remodeled, includes new breakroom and bathrooms
- Both floors accessible at grade level
- Area amenities include Water Works Park, Gray's Lake, and access to Des Moines CBD via Martin Luther King Dr. Parkway

Contact broker for additional information

[jll.com/des-moines](http://jll.com/des-moines)

Jones Lang LaSalle Brokerage, Inc.

**Lucas Hedstrom**

Vice President

+1 515 564 9269

[lucas.hedstrom@jll.com](mailto:lucas.hedstrom@jll.com)

**Justin Lossner, CCIM, SIOR**

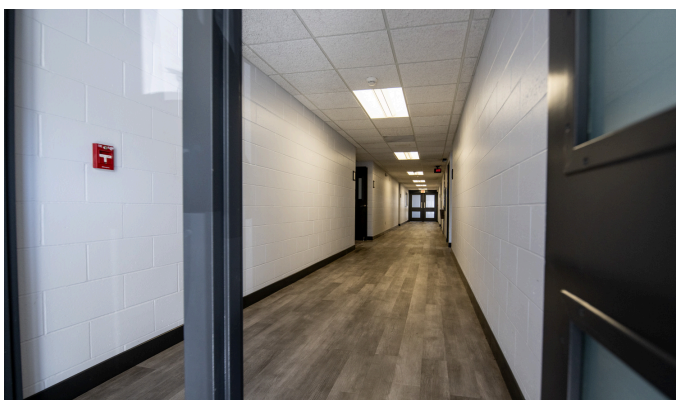
Senior Managing Director

+1 515 499 8679

[justin.lossner@jll.com](mailto:justin.lossner@jll.com)



# Images

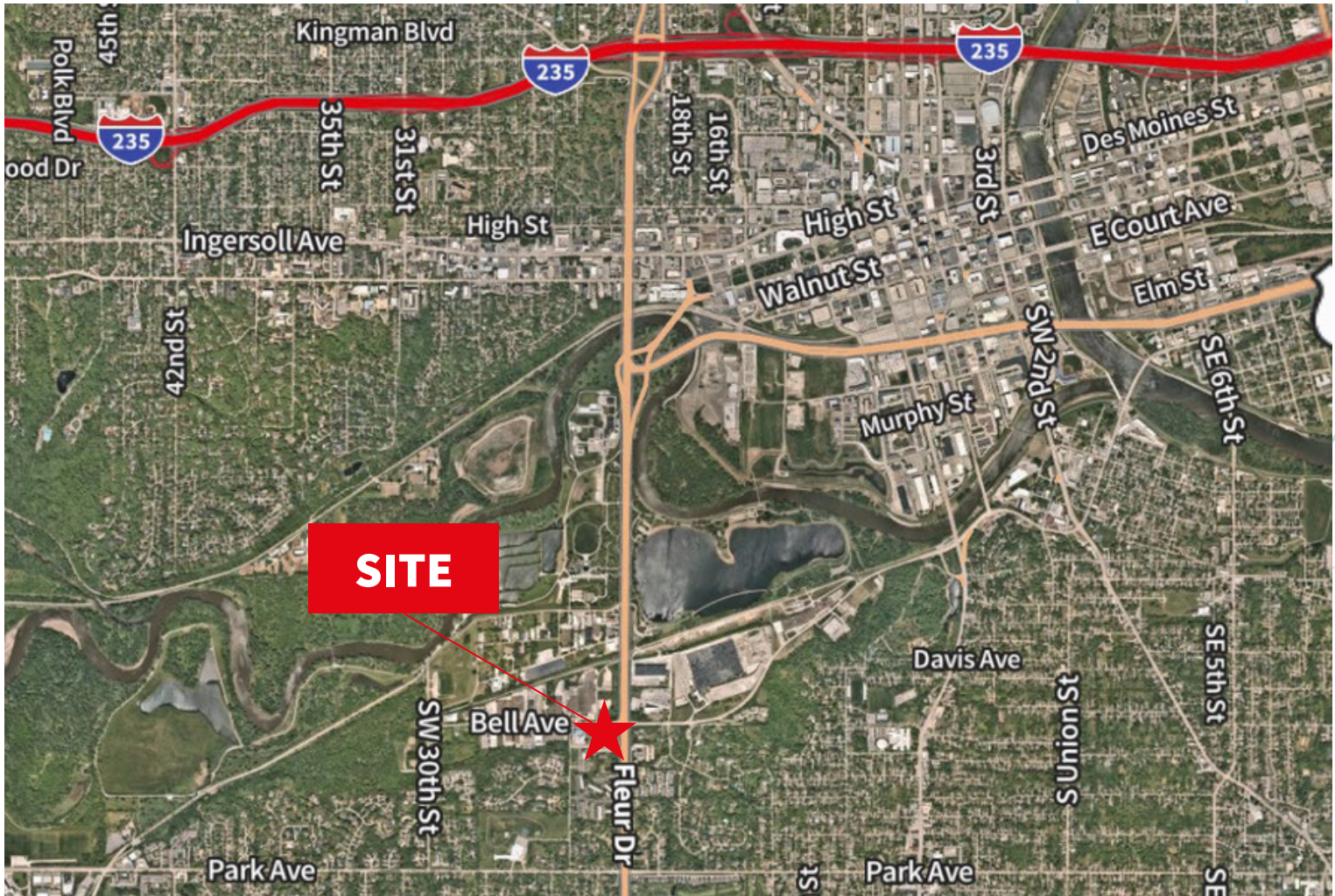






# For sale or lease

2620 Fleur Drive | Des Moines, Iowa 50321



Contact broker for  
additional information

**Lucas Hedstrom**  
Vice President  
+1 515 564 9269  
lucas.hedstrom@jll.com

**Justin Lossner, CCIM, SIOR**  
Senior Managing Director  
+1 515 499 8679  
justin.lossner@jll.com