

2,132 SF

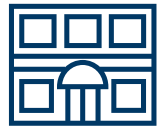
DOWNTOWN GROUND
FLOOR RETAIL - FOR LEASE



1810 MAIN STREET

HOUSTON, TEXAS

PROPERTY HIGHLIGHTS



AVAILABLE SF:
2,132 SF



GROSS RATE:
NEGOTIABLE



TERM:
NEGOTIABLE



VEHICLE PER DAY

St. Joseph Pkwy.
and Main Street:

11,014



POPULATION

33,571
WITHIN 1 MILE

221,149
WITHIN 3 MILES

496,999
WITHIN 5 MILES

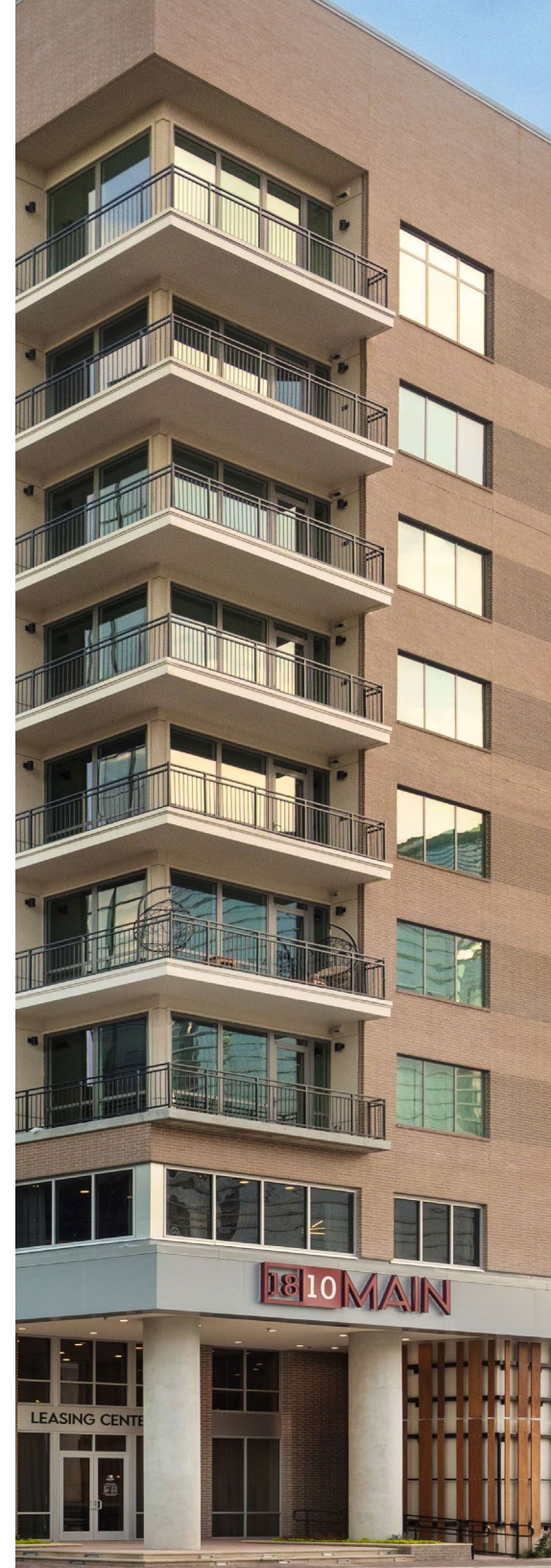


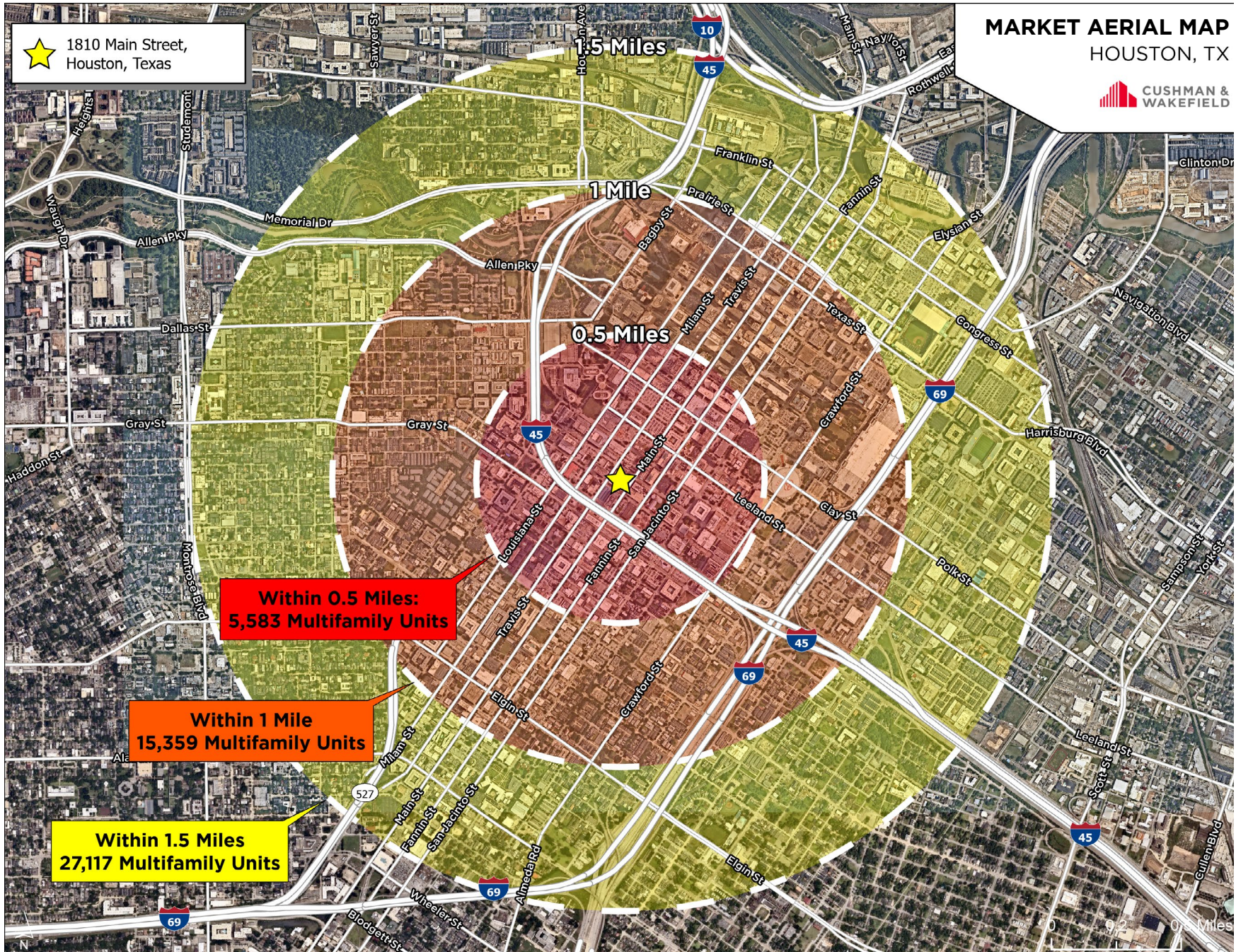
AVG. INCOME

\$114,657
WITHIN 1 MILE

\$113,952
WITHIN 3 MILES

\$109,524
WITHIN 5 MILES

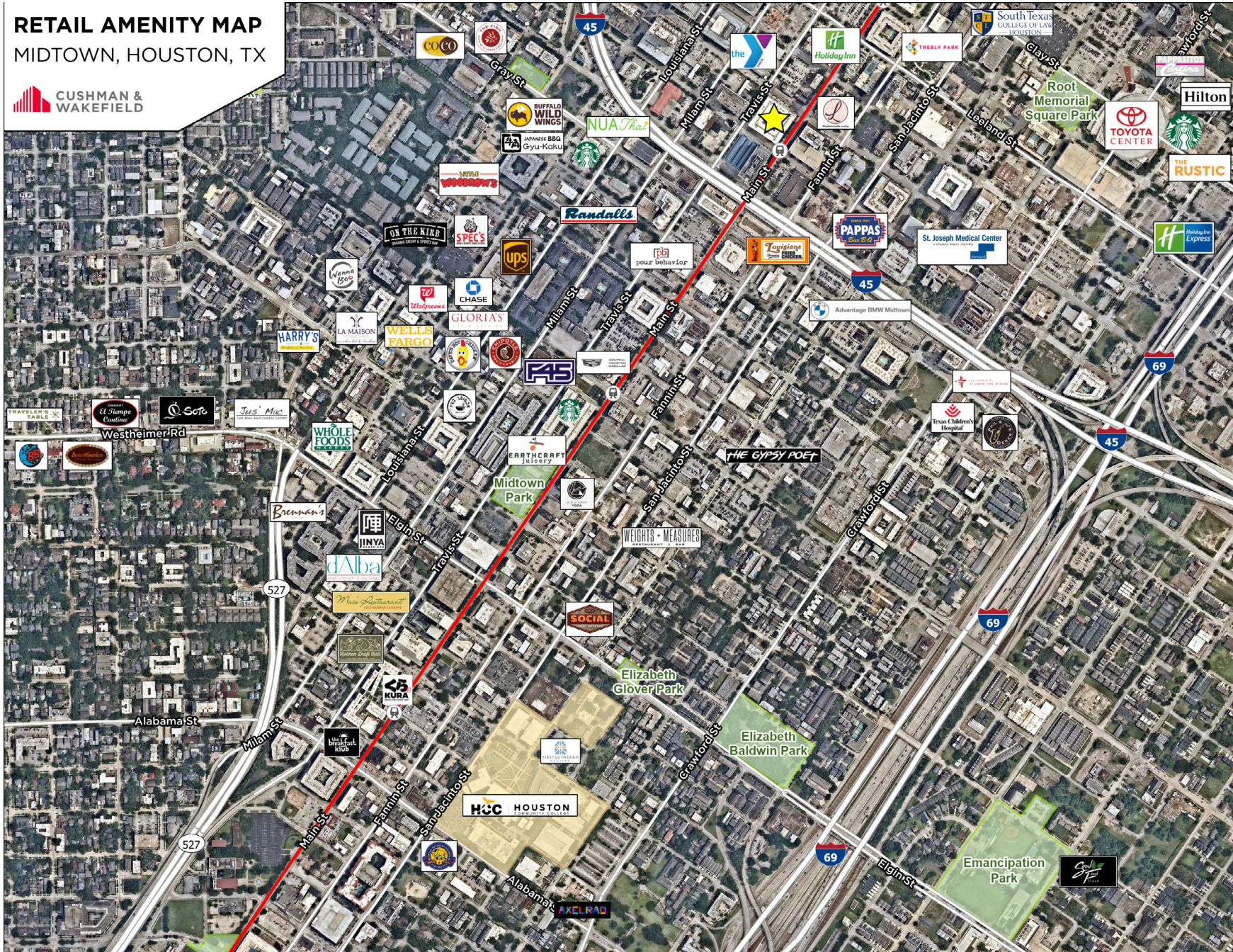




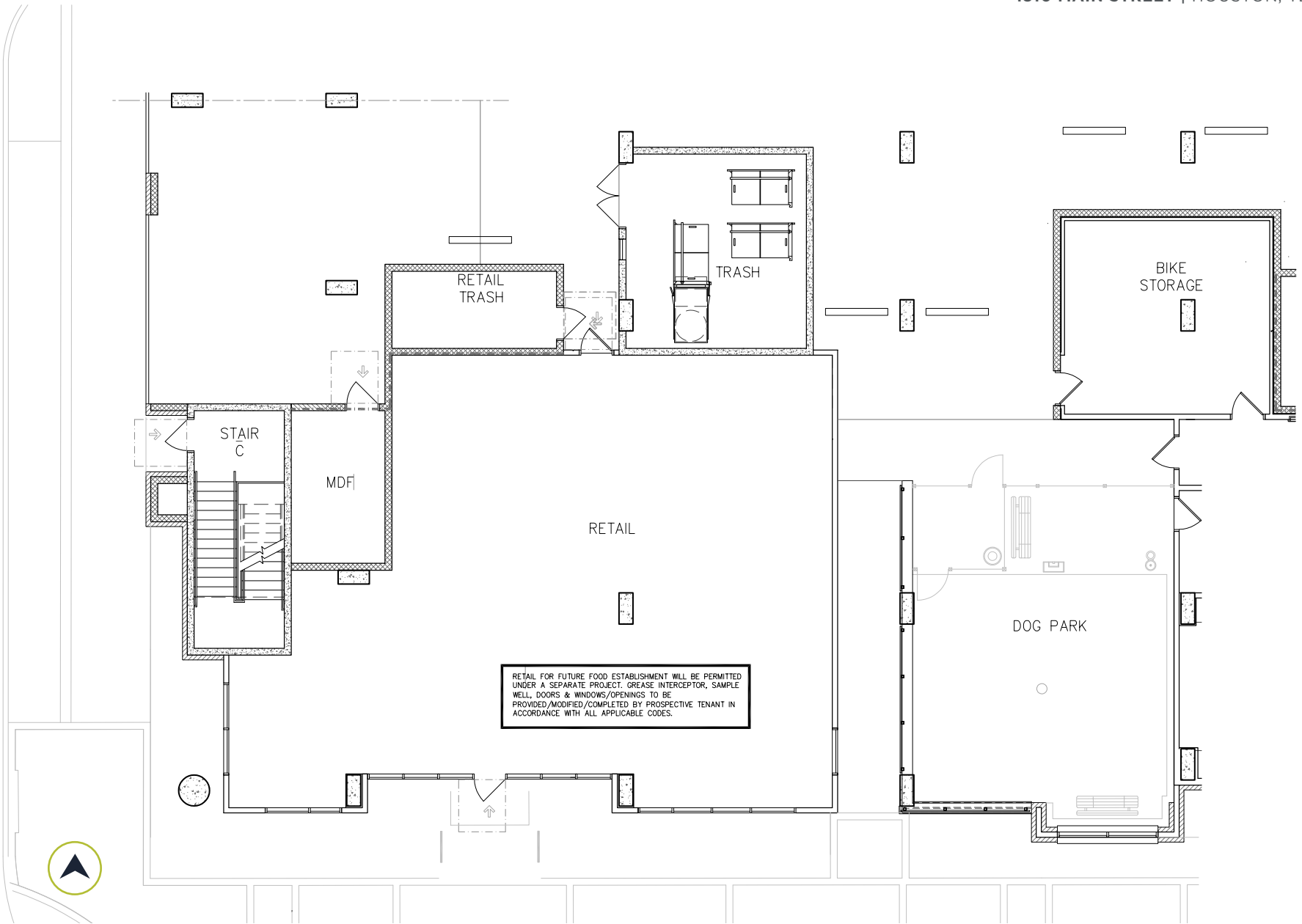
RETAIL AMENITY MAP HOUSTON, TX



RETAIL AMENITY MAP MIDTOWN, HOUSTON, TX







FLOOR PLAN

2,132 SF

CONTACT INFORMATION

RACHEL HALE GRANSTROM

+1 713 260 0237
rachel.granstrom@cushwake.com

1330 Post Oak Blvd., Suite 2700
Houston, TX 77056
+1 713 877 1700

cushmanwakefield.com

