

WESTPORT CENTER FOR HEALTH | MEDICAL OFFICE SPACE

4 BUILDING MEDICAL CAMPUS WITH WATERFRONT VIEWS

323 – 329 Riverside Ave, Westport, CT 06880

LEASE RATE: \$40/SF NNN



Ranked in Top 50
Commercial Firms in U.S.



Virtual Tour – Suite 205



Riverwalk Path



Property Highlights

- Professional Medical Office - 4 Building Complex
- Largest assemblage of medical space in Westport
- Waterfront views with Riverwalk path
- Freestanding buildings with branding opportunities
- New roofs, updated lobbies & tenant improvements
- Availabilities include
 - Bldg 329 #205: 977± SF 2nd FL
- Covered & surface parking
- Easy access to I-95
- ½ mile from Metro-North Westport train station

For more information contact:

J. Richard Lee | 203-643-1006 | rlee@orlcommercial.com

O,R&L Commercial Integrated Real Estate Services | www.orlcommercial.com

2 Summit Place, Branford, CT 06450 ▪ Tel: (203) 488-1555 ▪ Fax: (203) 315-4046 | 2340 Silas Deane Highway, Rocky Hill, CT 06067 ▪ Tel: (860) 721-0033 ▪ Fax: (860) 721-7882

While the information contained herein has been obtained from sources deemed to be reliable, no guarantee is made as to its accuracy.

WESTPORT CENTER FOR HEALTH | MEDICAL OFFICE SPACE

4 BUILDING MEDICAL CAMPUS WITH WATERFRONT VIEWS

323 – 329 Riverside Ave, Westport, CT 06880

LEASE RATE: \$40/SF NNN



Ranked in Top 50
Commercial Firms in U.S.

Property Highlights

- Professional Medical Office 4 Building Complex
- Largest assemblage of medical space in Westport
- Waterfront views with Riverwalk path
- Freestanding buildings with branding opportunities
- New roofs, updated lobbies & tenant improvements
- Availabilities include
 - Bldg 329 #205: 977± SF - 2nd FL
- Covered & surface parking
- Easy access to I-95
- ½ mile from Metro-North Westport train station



Scan the QR Code below with a barcode scanner on your smart phone to access our website.



Connect with Us



HEALTHCARE REALTY

For more information contact:

J. Richard Lee | 203-643-1006 | rlee@orlcommercial.com

O,R&L Commercial Integrated Real Estate Services | www.orlcommercial.com

2 Summit Place, Branford, CT 06450 • Tel: (203) 488-1555 • Fax: (203) 315-4046 | 2340 Silas Deane Highway, Rocky Hill, CT 06067 • Tel: (860) 721-0033 • Fax: (860) 721-7882

While the information contained herein has been obtained from sources deemed to be reliable, no guarantee is made as to its accuracy.

WESTPORT CENTER FOR HEALTH | MEDICAL OFFICE SPACE

4 BUILDING MEDICAL CAMPUS WITH WATERFRONT VIEWS

323 – 329 Riverside Ave, Westport, CT 06880

LEASE RATE: \$40/SF NNN



Ranked in Top 50
Commercial Firms in U.S.



Property Highlights

- Professional Medical Office 4 Building Complex
- Largest assemblage of medical space in Westport
- Waterfront views with Riverwalk path
- Freestanding buildings with branding opportunities
- New roofs, updated lobbies & tenant improvements
- Availabilities include
 - Bldg 329 #205: 977± SF - 2nd FL
- Covered & surface parking
- Easy access to I-95
- ½ mile from Metro-North Westport train station



HEALTHCARE
REALTY

For more information contact:

J. Richard Lee | 203-643-1006 | rlee@orlcommercial.com

O,R&L Commercial Integrated Real Estate Services | www.orlcommercial.com

2 Summit Place, Branford, CT 06450 • Tel: (203) 488-1555 • Fax: (203) 315-4046 | 2340 Silas Deane Highway, Rocky Hill, CT 06067 • Tel: (860) 721-0033 • Fax: (860) 721-7882

While the information contained herein has been obtained from sources deemed to be reliable, no guarantee is made as to its accuracy.



WESTPORT CENTER FOR HEALTH | MEDICAL OFFICE SPACE 4 BUILDING MEDICAL CAMPUS WITH WATERFRONT VIEWS

Ranked in Top 50
Commercial Firms in U.S.

323 – 329 Riverside Ave, Westport, CT 06880

LEASE RATE: \$40/SF NNN



WESTPORT CENTER FOR HEALTH

325 RIVERSIDE AVENUE | WESTPORT, CT 06880

SUITE 100

3,869 RSF



Continuous millwork houses perimeter heating/cooling units.
Room area indicated excludes this from the calculation in Exam Rooms only.



Virtual Tour Buildout Example – Suite 100

1 Proposed Floor Plan
1/8" = 1'-0"

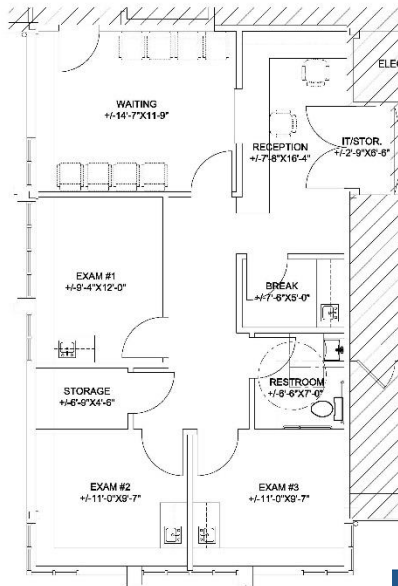


WESTPORT CENTER FOR HEALTH

329 RIVERSIDE AVENUE | WESTPORT, CT 06880

SUITE 205

977 RSF



12.13.2022



Virtual Tour – Suite 205



HEALTHCARE
REALTY



For more information contact:

J. Richard Lee | 203-643-1006 | rlee@orlcommercial.com

OR&L Commercial Integrated Real Estate Services | www.orlcommercial.com

2 Summit Place, Branford, CT 06450 • Tel: (203) 488-1555 • Fax: (203) 315-4046 | 2340 Silas Deane Highway, Rocky Hill, CT 06067 • Tel: (860) 721-0033 • Fax: (860) 721-7882

While the information contained herein has been obtained from sources deemed to be reliable, no guarantee is made as to its accuracy.