

OFFICE SPACE FOR LEASE

16 GREENMEADOW DRIVE, TIMONIUM, MD 21093



BUILDING INFO

36,000-square-foot building with prominent York Road visibility
 Adjacent to the Timonium Square Shopping Center, with restaurant choices and retail amenities nearby
 Excellent access to I-83 and 695, with York Road exposure

AVAILABILITY

Suite G111: 1,435 SF available
 - \$21.50 PSF, Full Service
 Suite G103: 966 SF available
 - \$16.00 PSF, Full Service
 Verizon Fios



FOR MORE INFORMATION PLEASE CONTACT:

Paul F. Obrecht, III, SIOR
 443-330-4802 | pfbrechtiii@blueobrecht.com

Ned Brady
 443-330-4804 | nbrady@blueobrecht.com



[instagram.com/blueobrecht](https://www.instagram.com/blueobrecht)



[linkedin.com/company/blue&obrecht](https://www.linkedin.com/company/blue&obrecht)



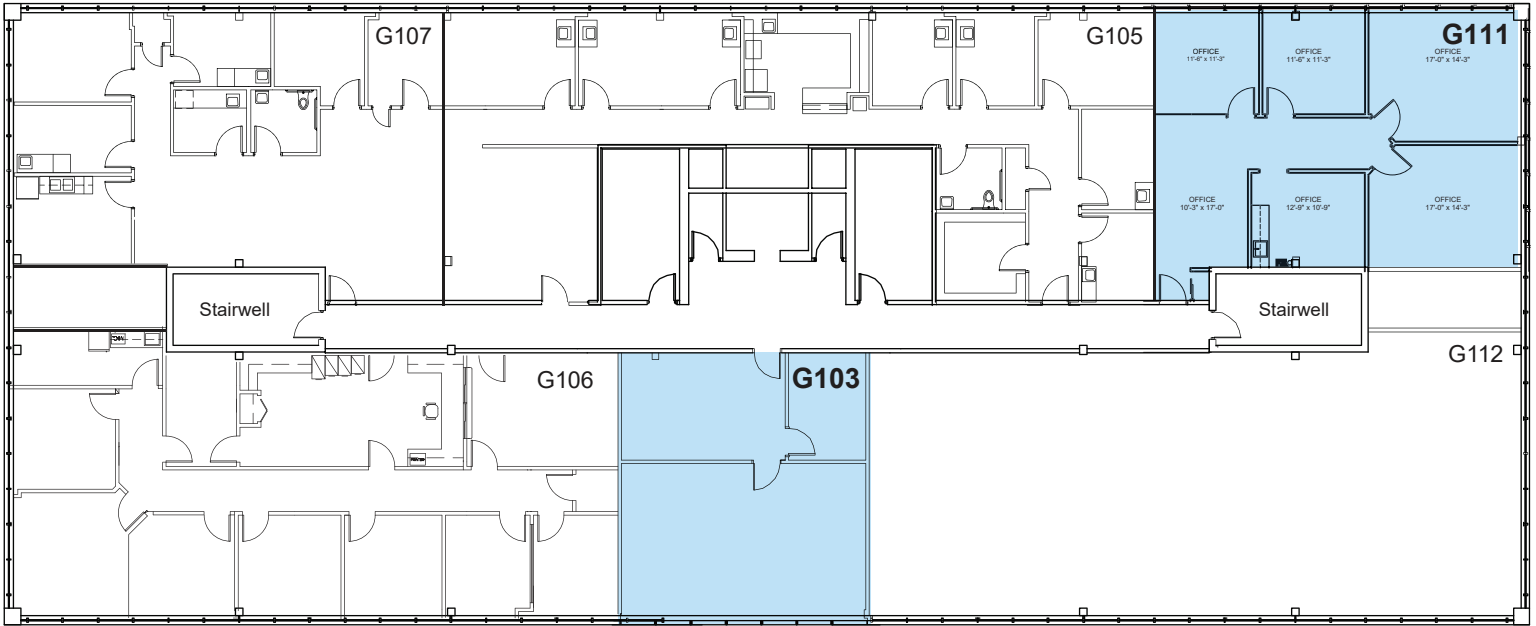
www.blueobrecht.com



410-561-5568

16 GREENMEADOW DRIVE OFFICE SPACE FOR LEASE

**Suite G111
1,435 SF Available**



**Suite G103
966 SF Available**



FOR MORE INFO PLEASE CONTACT:

Paul F. Obrecht, III, SIOR
443-330-4802
pfobrechtiii@blueobrecht.com

Ned Brady
443-330-4804
nbrady@blueobrecht.com

Blue & Obrecht Realty, LLC
9475 Deereco Road, Suite 200
Timonium, MD 21093



[instagram.com/blueobrecht](https://www.instagram.com/blueobrecht)



[linkedin.com/company/blue&obrecht](https://www.linkedin.com/company/blue&obrecht)



www.blueobrecht.com



410-561-5568