



2035 TRADE DRIVE
SHOP + YARD FOR SALE
LOOP 250 FRONTAGE
MIDLAND, TEXAS

MORIAH BROKERAGE SERVICES, LLC | P: 432-682-2510 | MIDLAND, TX

PRIME LOCATION SITE WELL SUITED FOR LAYDOWN YARD

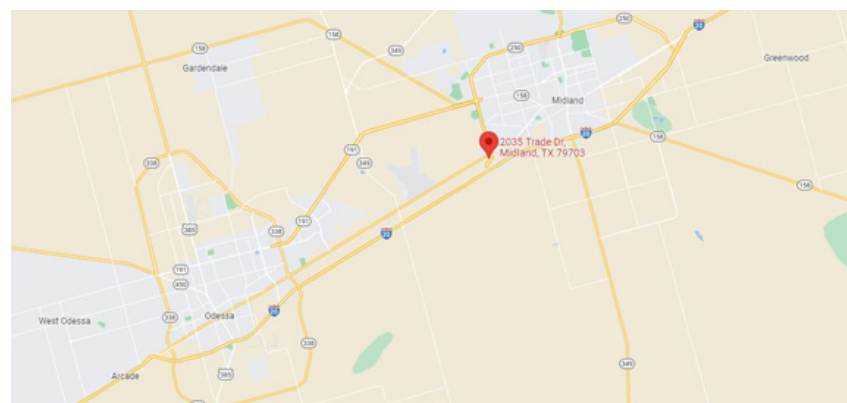
\$1,350,000
1.74 ACRES



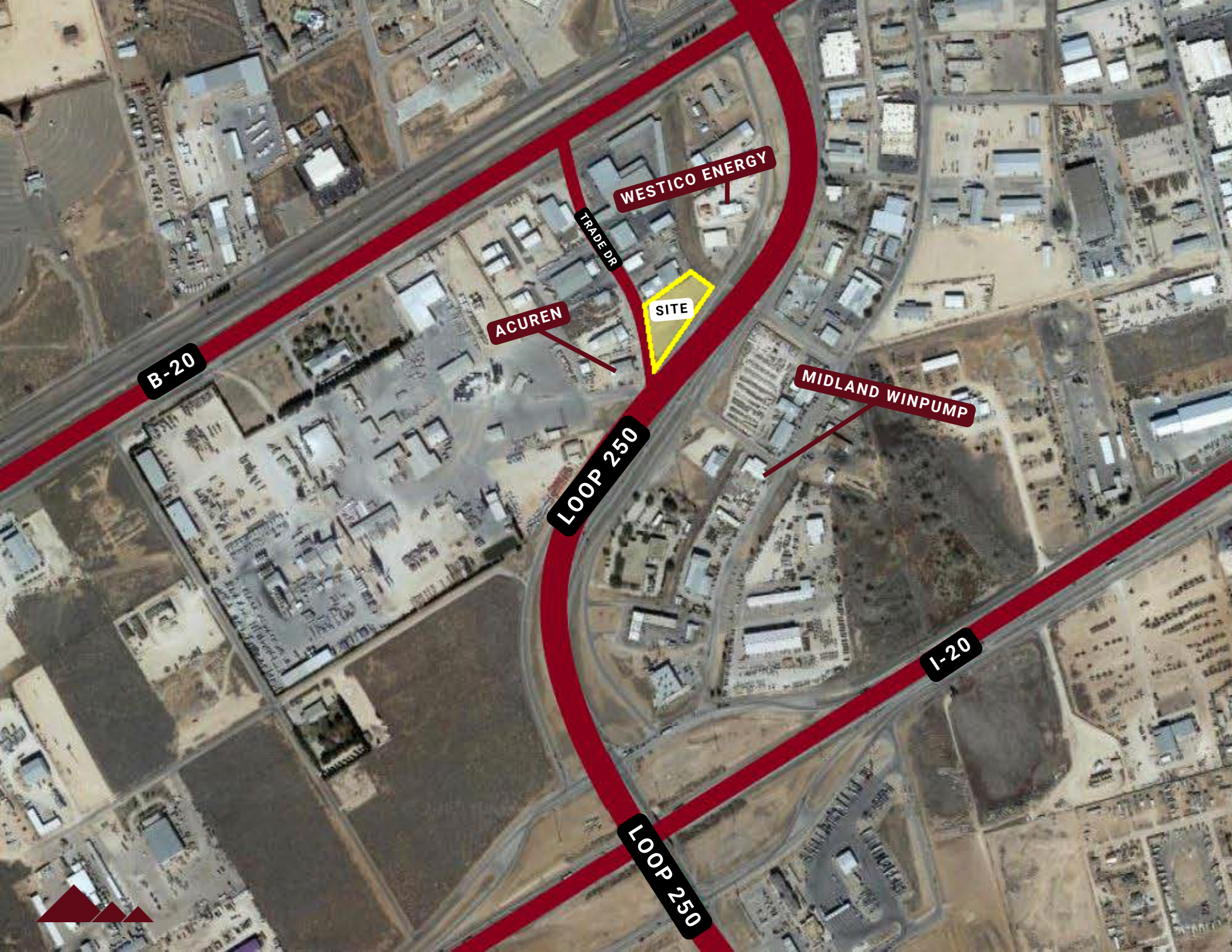
LOCATION OVERVIEW

This small shop and yard site in Midland sits on a 1.74 AC lot. With prime access to Interstate 20, Business 20 and Loop 250. This industrial site is served by Frontage on Loop 250 and Trade Drive.

BUILDING MATERIAL: Metal
SHOP SF: 2,190



AJ BROWN
Broker Associate
423.638.5453
Moriah Brokerage Services, LLC



B-20

WESTICO ENERGY

TRADE DR

ACUREN

SITE

MIDLAND WIMPUMP

LOOP 250

I-20

LOOP 250



PROPERTY HIGHLIGHTS

- Stabilized Caliche Yard
- Perimeter Fencing | Automatic Gates
- (3) 12' Overhead Doors
- 2 Yard Entry Points

SURROUNDING BUSINESSES

- Westico Energy
- Acuren
- Midland Winpump
- Lonestar Distribution
- Victory Welding
- Basin Power Solutions
- The Window Source of West Texas
- Teraco





2035 TRADE DRIVE



AJ BROWN
Broker Associate
423.638.5453
Moriah Brokerage Services, LLC

An aerial photograph showing a multi-lane highway interchange on the left, with a road curving to the right. To the right of the road is a large, flat, brown dirt lot. In the background, there is an industrial area with several buildings, including a large white warehouse-like structure, and a parking lot filled with cars. The sky is overcast and grey.

CONTACT

WES GOTCHER

PRESIDENT

wes@moriahgroup.net

C: 432.853.9783

AJ BROWN

BROKER ASSOCIATE

ajbrown@moriahgroup.net

C: 432.638.5453

