

FOR SALE
633,415 SF
INDUSTRIAL BUILDING

4676 ERIE AVENUE, SW
MASSILLON, OHIO



100% LEASED TO LONG-TERM TENANTS | TRIPLE NET LEASES | CALL FOR OFFERS

OFFERING MEMORANDUM TEASER



CONTACT INFORMATION

TERRY COYNE

Executive Vice Chairman

216-218-0259

terry.coyne@nmrk.com

NEWMARK

Terry **COYNE**.com

PROPERTY SPECIFICATIONS



633,415 SF Total



84 Total Dock Doors



55.48 Acres



Truck Trailer Parking (150+ Positions)



Rail Car Access (With Modification)



240+ Employee Parking Spaces



35' Clearance Height with ESFR Sprinklers



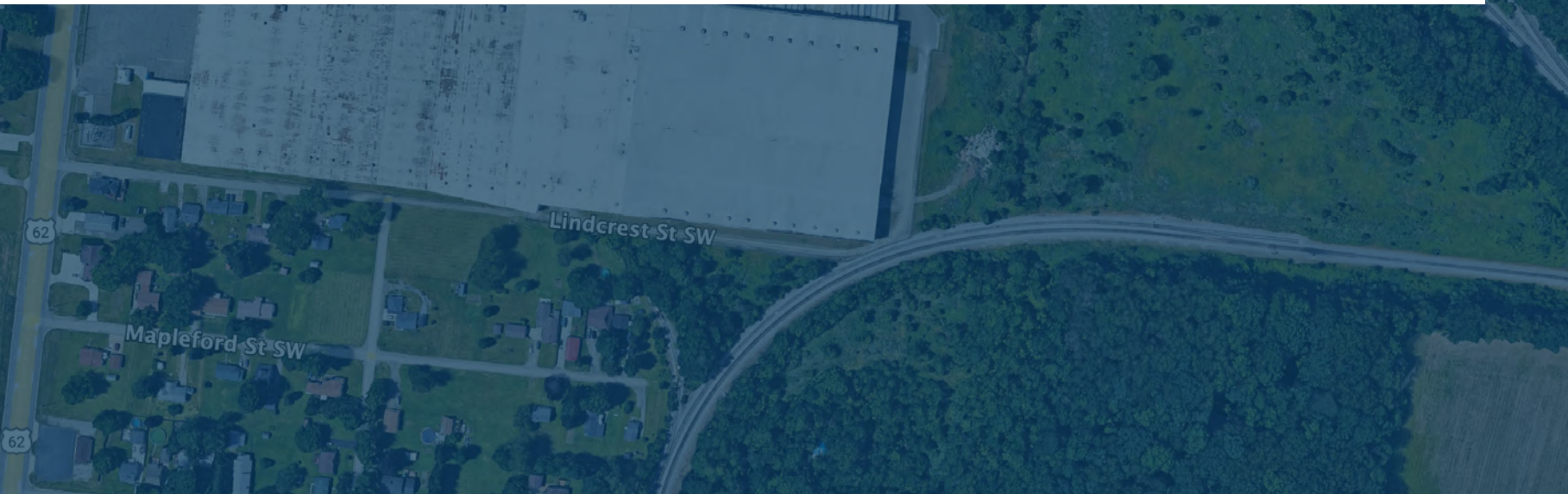
Server Room with FM200 Waterless Fire Suppression



Heavy Power: 208-480V 3-Phase; 12,470V and EST. 3,000-4,000A; Substation of 67,000V on Site: 3,000A Amperage; 100 Megawatts ~4 Month Lead Time

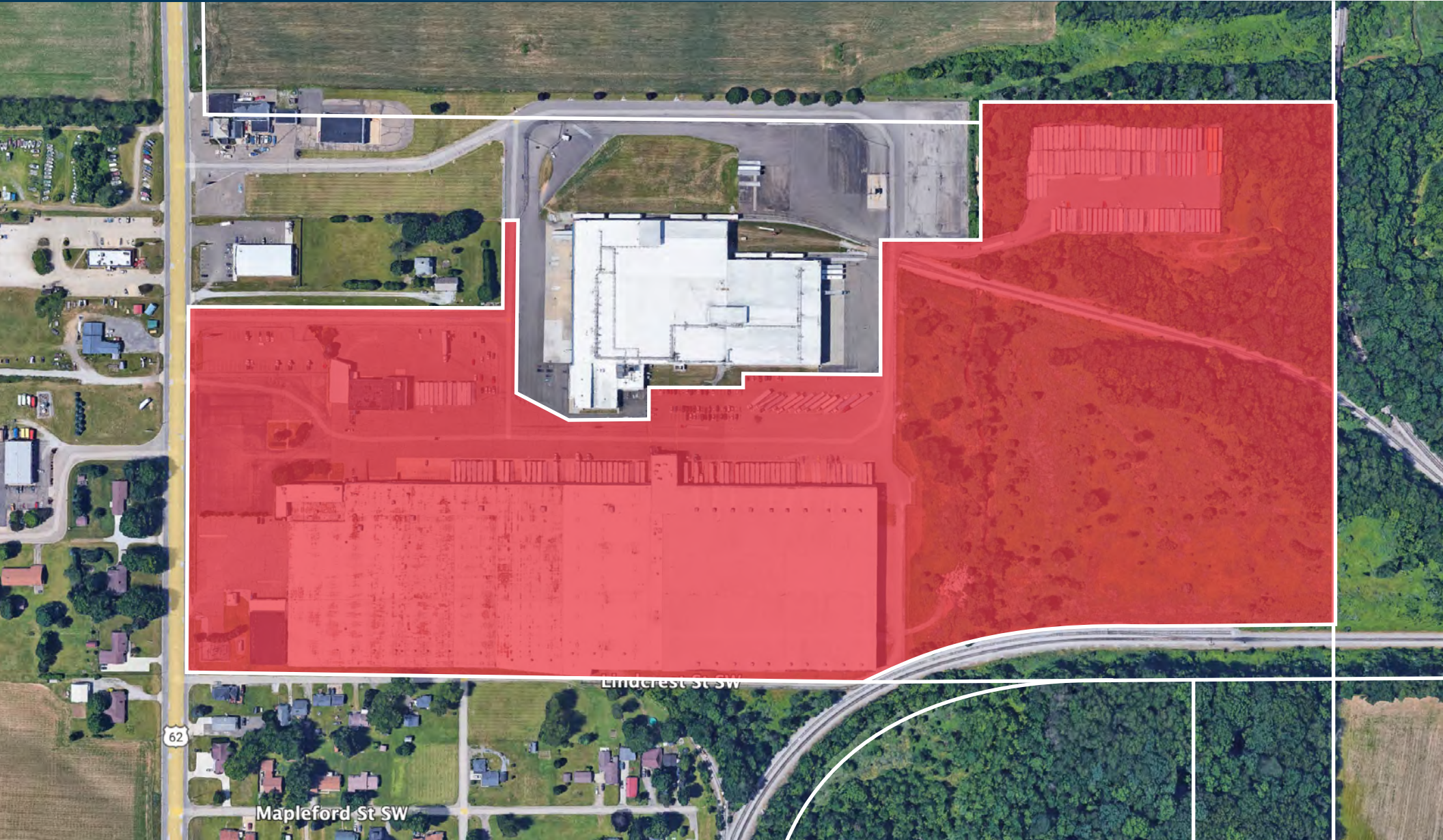


Location: Proximity to Rt. 30, 62, and 21 as well as I-77



NAVARRE

PROPERTY LINES



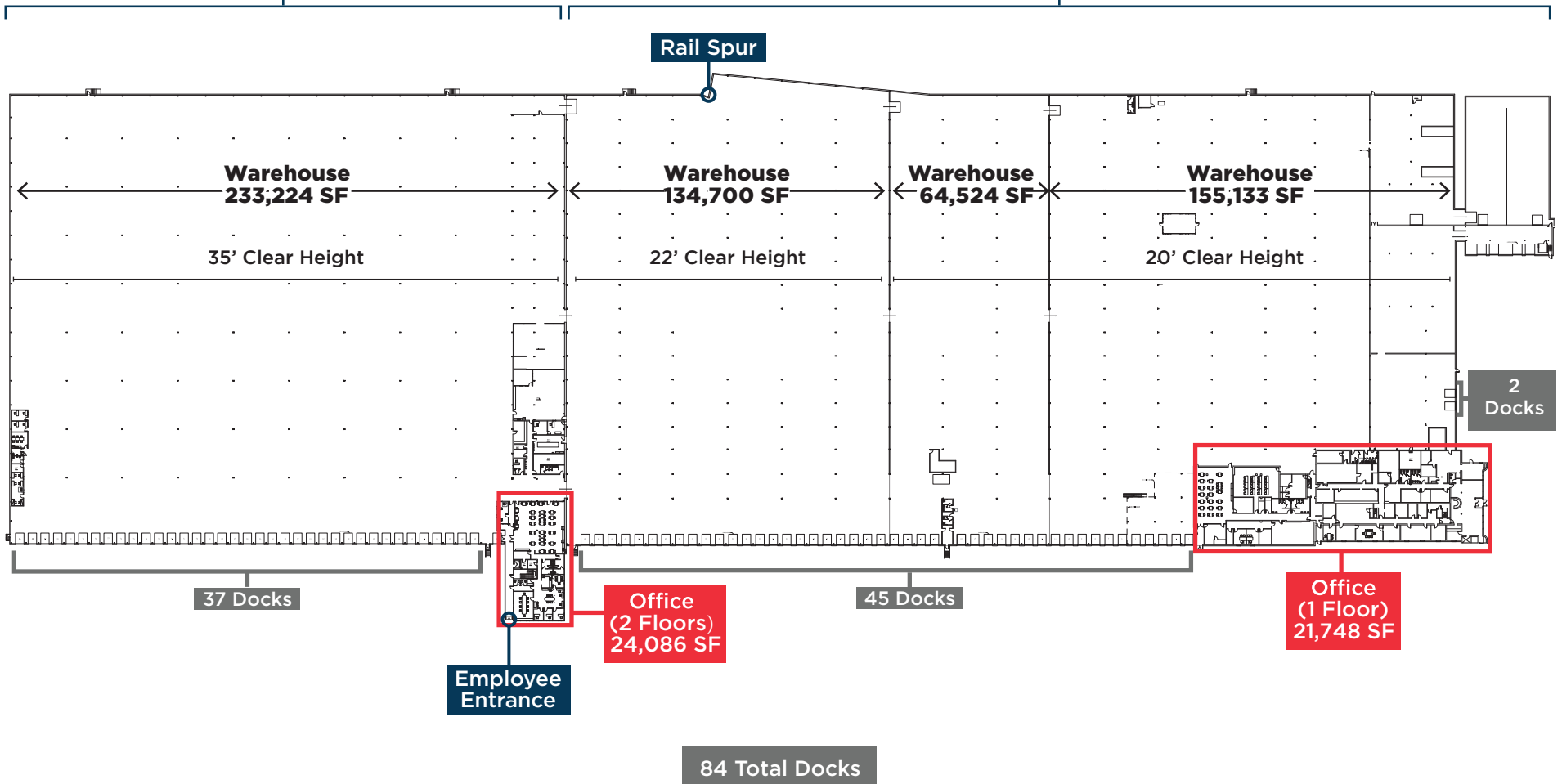
NAVARRE

FLOOR PLAN



High Bay

Low Bay



NAVARRE

PHOTOS



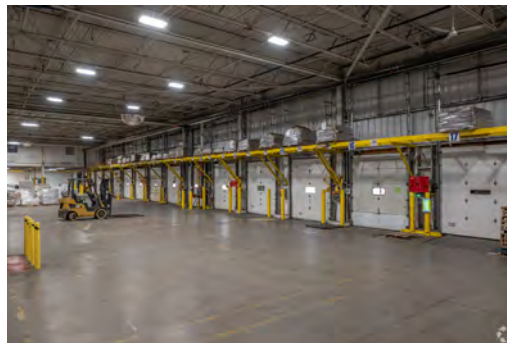
Exterior Entry



Exterior Aerial

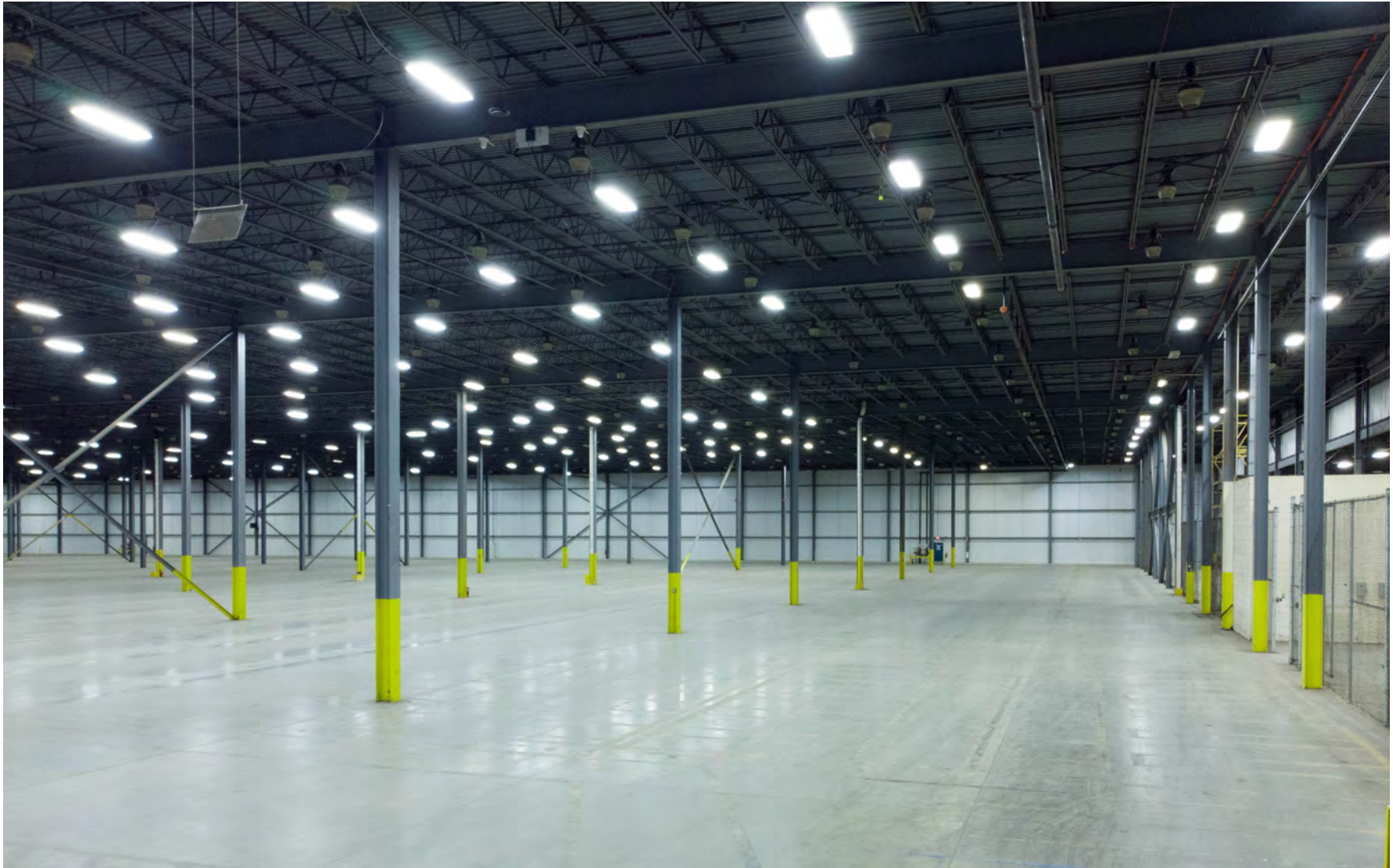


Exterior Docks



Interior Docks

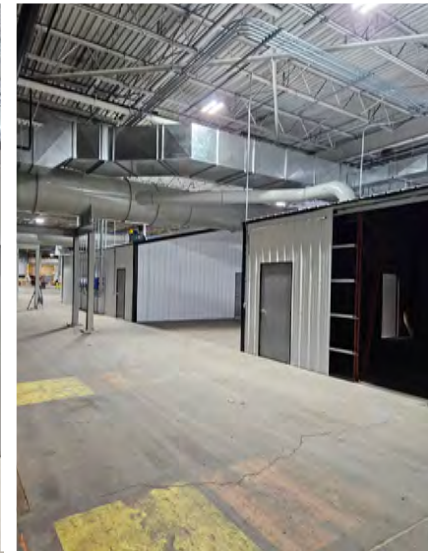




Warehouse

NAVARRE

PHOTOS



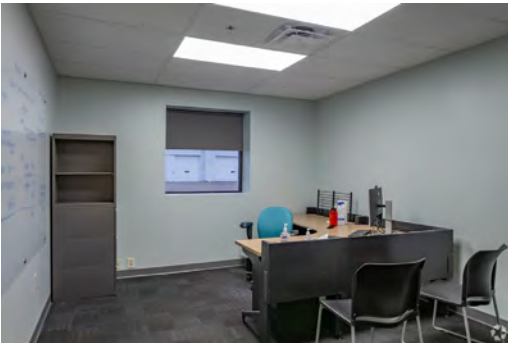
Low Bay Warehouse

NAVARRE

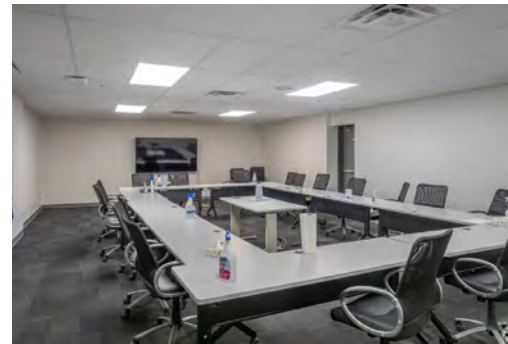
PHOTOS



High Bay Warehouse



Office



Training Rooms

Cafe

OWNER UPGRADES

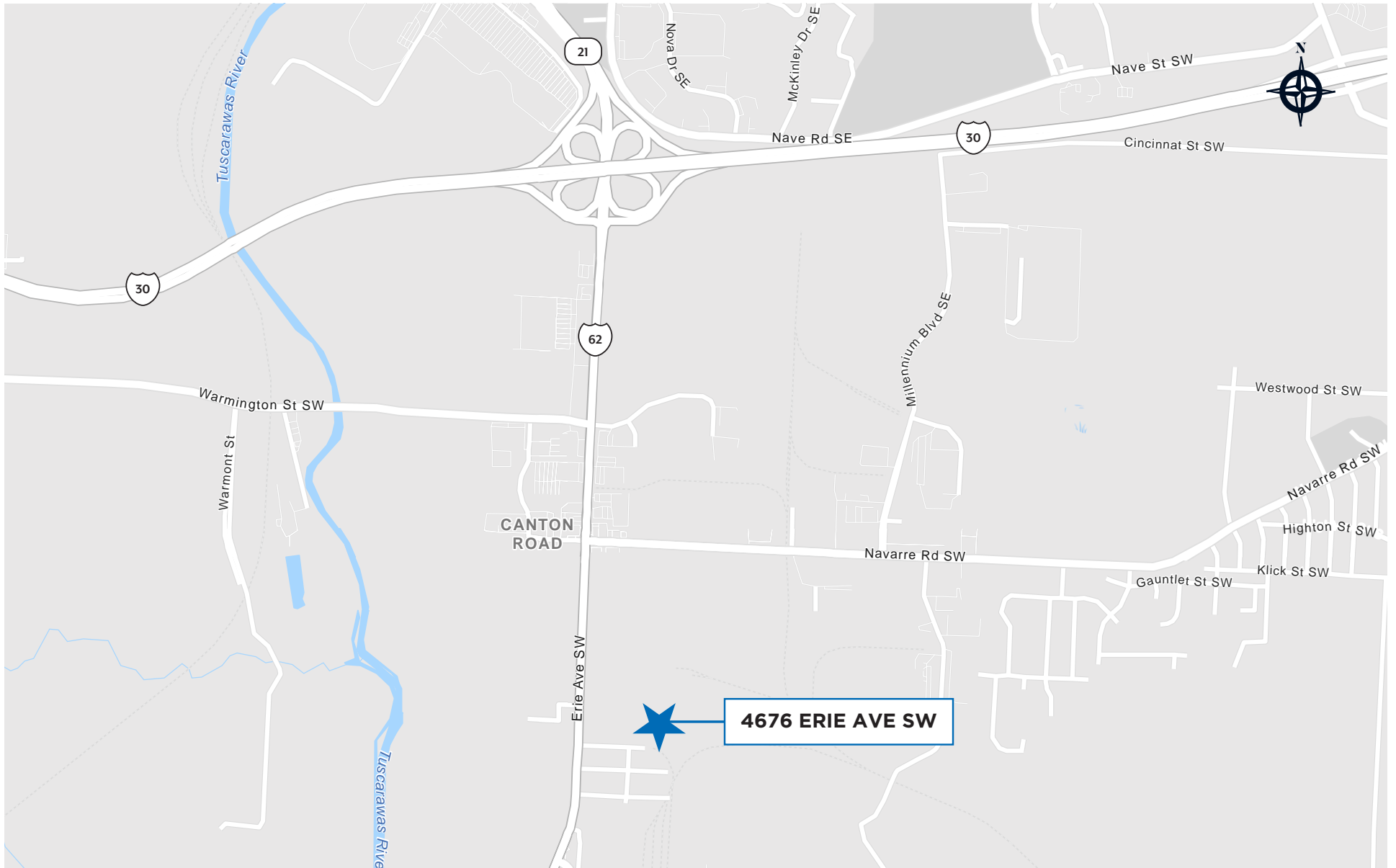
- All columns repaired
- All warehouse concrete floors repaired
- Upgraded lighting to LED fixtures in warehouse and remodeled offices
- Upgraded sprinkler systems for dense storage
- Racking installed with in-rack sprinklers
- 1st & 2nd floor offices remodeled, new carpet & epoxy flooring, paint, window treatments
- All restrooms updated
- Several breakrooms added
- 32' x 20' modular building added (may be removed)
- Exterior concrete and asphalt repaired
- 84 dock doors maintained, dock levelers and dock locks in place
- Recent roof repairs
- Upgraded office HVAC systems
- All asbestos removed

REALTRUCK TENANT UPGRADES

- Invested \$1M+ in a large, immovable piece of machinery, indicating long-term operational commitment to the site
- Installed a \$50,000 truck-access ramp allowing vehicles to drive fully into the bay for improved logistics and workflow
- Full lobby remodeled, visibly modernizing and upgrading the front-of-house experience
- Additional furniture, fixtures, and equipment upgrades, enhancing functionality, efficiency, and overall facility quality

NAVARRE

LOCATION MAP



NAVARRE

INDUSTRIAL AERIAL MAP





CONTACT INFORMATION



TERRY COYNE
Executive Vice Chairman
216-218-0259
terry.coyne@nmrk.com

NEWMARK

The information contained herein has been obtained from sources deemed reliable but has not been verified and no guarantee, warranty or representation, either express or implied, is made with respect to such information. Terms of sale or lease and availability are subject to change or withdrawal without notice.

Terry **COYNE**.com