



Moses Tucker
PARTNERS

Little Rock (HEADQUARTERS)
200 River Market Ave, Suite 300
Little Rock, AR 72201
501.376.6555

Bentonville (BRANCH)
805 S Walton Blvd, Suite 123
Bentonville, AR 72712
479.271.6118

RETAIL/RESTAURANT PROPERTY FOR SALE

12210 W Markham St, Little Rock, AR



CONTACT US TODAY
501.376.6555 | [mosestucker.com](https://www.mosestucker.com)



OFFERING SUMMARY

Offering	For Sale
Address	12210 W Markham St, Little Rock, AR 72211
Property Type	Retail/Restaurant
Price	\$2,800,000
Building Size	±5,300 SF
Lot Size	0.77 Acres
Year Built	1999
Zoning	C-1
Parking	75 Surface Parking Spaces

PROPERTY HIGHLIGHTS

- Prime retail/QSR location
- High visibility from W Markham St (100' frontage on Markham St)
- Surrounded by national retailers such as Walmart, Sam's Club, Home Depot, Lowe's, Target, Whole Foods, Trader Joe's, Academy Sports + Outdoors, Hobby Lobby, Best Buy, Barnes & Noble, Ulta, Old Navy, Petco, PetSmart, Esporta, Chick-fil-a, and Chili's, among others
- Traffic Counts: W Markham St (21,000 VPD) & Chenal Parkway (41,000 VPD)



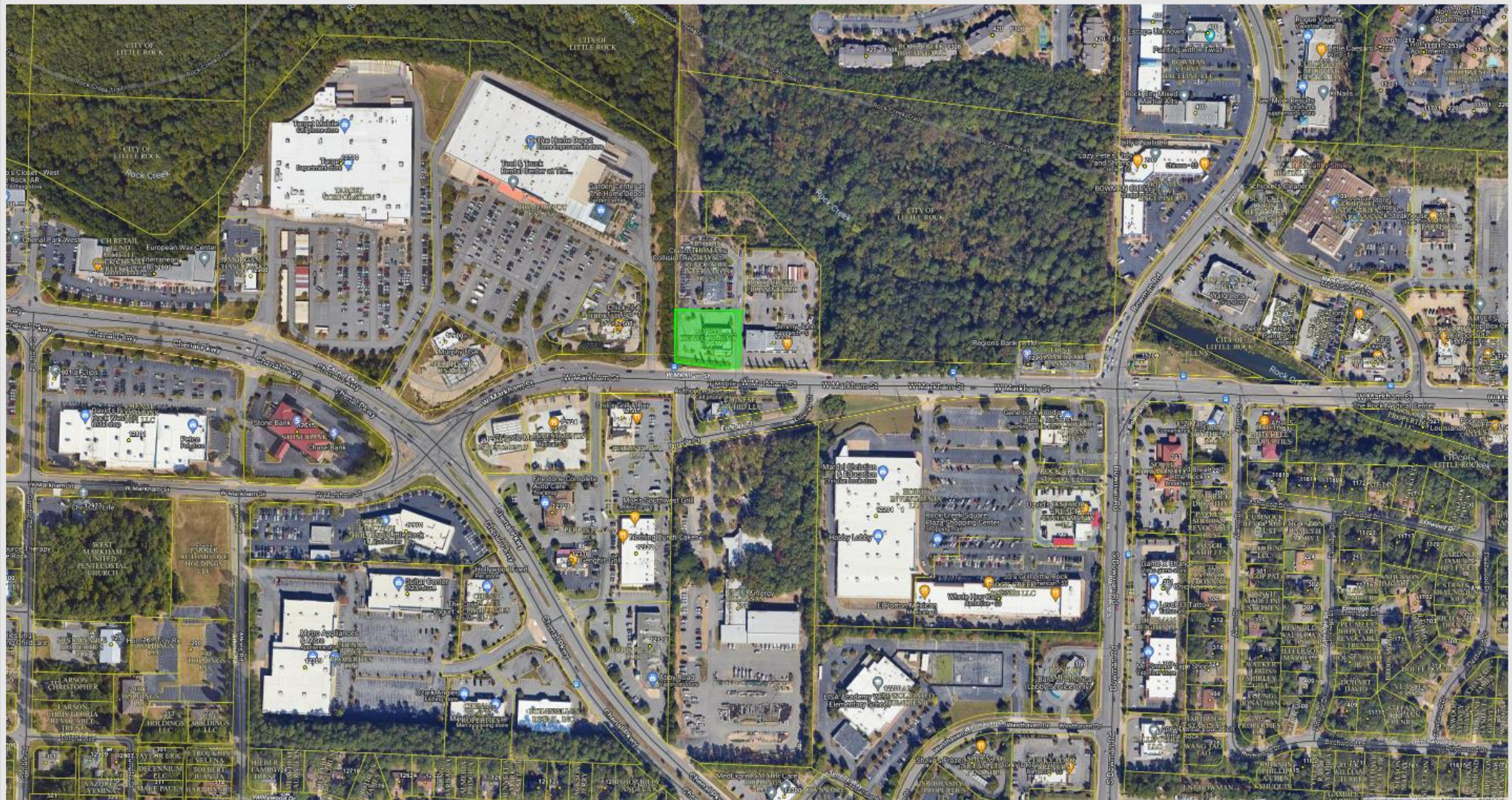


REGIONAL MAP



 501.376.6555  mosestucker.com





LITTLE ROCK, AR



Little Rock is the capital of Arkansas and the state's largest municipality, with over 202,000 people calling it home. It is considered where "America Comes Together," boasting 40% of the nation's population and buying power within a 550-mile radius of the city center.

Notably, Little Rock is considered one of the "Top 10 Places For Young Professionals To Live" ([Forbes 2023](#)), a "Best Place for Business and Careers" ([Forbes 2019](#)), one of the "Best Travel-Worthy State Capitals" ([USA Today 2014](#)), and one of "America's 10 Great Places to Live" ([Kiplinger's Personal Finance 2013](#)).

Central Arkansas has experienced significant population growth over the past decade due to the three major universities that call the area home, a growing technology sector, and a variety of government- and business-related industries. Major corporations headquartered in the Little Rock metroplex include Dillard's, Windstream Communications, and Acxiom. One of the largest public employers in the state, with more than 10,000 employees, is the University of Arkansas for Medical Sciences and its affiliates, which have a total economic impact in Arkansas of ~\$5 billion per year. Simultaneously to the population growth, Central Arkansas's tourism industry is booming, with 10 million+ visitors flocking to the region each year.

DEMOGRAPHICS*

Population

3 MILES

65,036

5 MILES

124,497

10 MILES

309,412

Households

29,401

55,226

133,277

Average Age

40.0

40.3

39.6

Average Household Income

\$105,048

\$114,206

\$96,118

Businesses


3,079

5,656

12,169

**Demographic details based on property location*

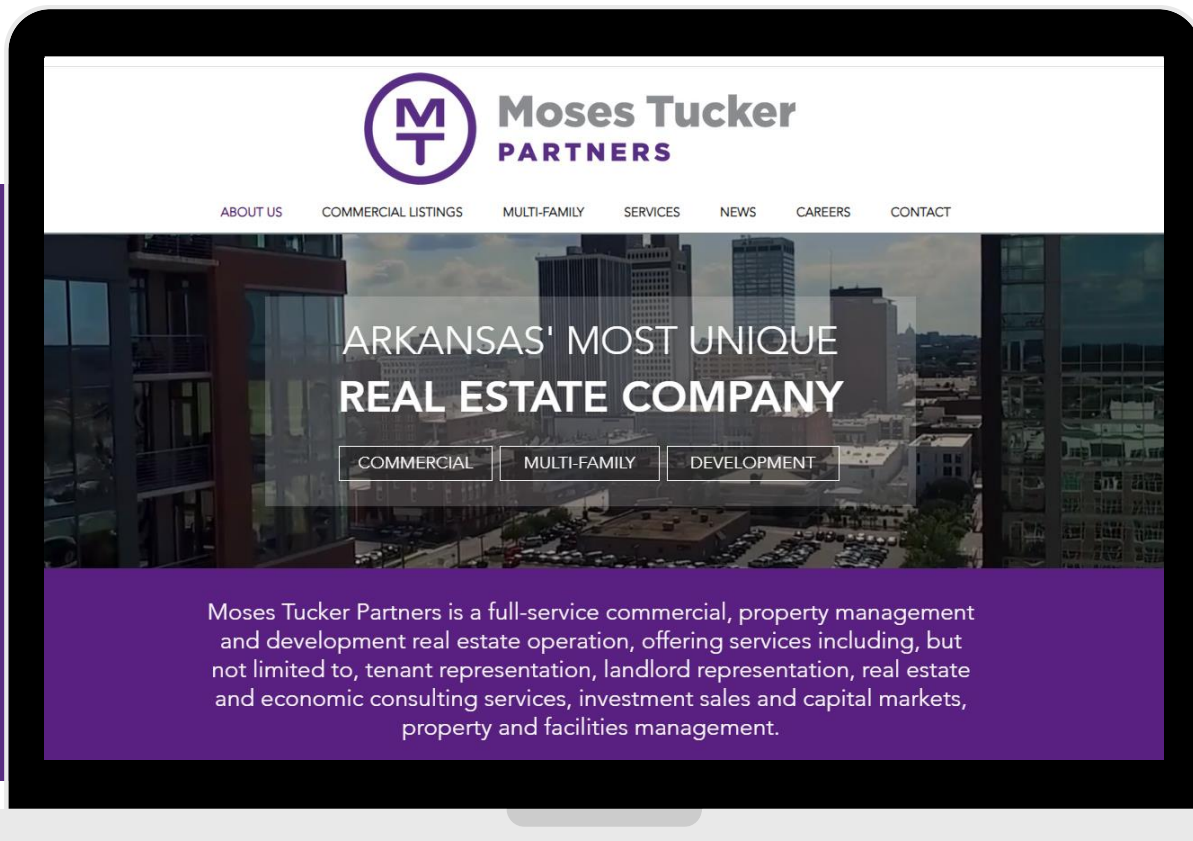
CONNECT

 (501) 376-6555

 www.mosestucker.com

 info@mosestucker.com

 **200 River Market Ave, Suite 300,
Little Rock, AR 72201**



Chris Moses

Principal, President & CEO
cmoses@mosestucker.com

Greyson Skokos

Principal & Vice President of Brokerage
gskokos@mosestucker.com

Chris Monroe

Principal & Vice President, Corporate Services
cmonroe@mosestucker.com

Thomas Schmidt

Brokerage Associate
tschmidt@mosestucker.com

DISCLAIMER

Moses Tucker Partners represents the owner of the property represented herein. Although all information furnished regarding property for sale, rental, or financing is from sources deemed reliable, such information has not been verified and no express representation is made nor is any to be implied as to the accuracy thereof and it is submitted subject to errors, omissions, change of price, rental or other conditions, prior sale, lease or financing, or withdrawal without notice and to any special conditions imposed by our principal.