



COMMERCIAL, LLC.

ALEXANDER, MONTROSE, RITTENBERG
Commercial Real Estate Brokerage

Est. 1994

Celebrating
32
Years
1994-2026

SPACE FOR LEASE

The Truist Building

13975 Connecticut Avenue

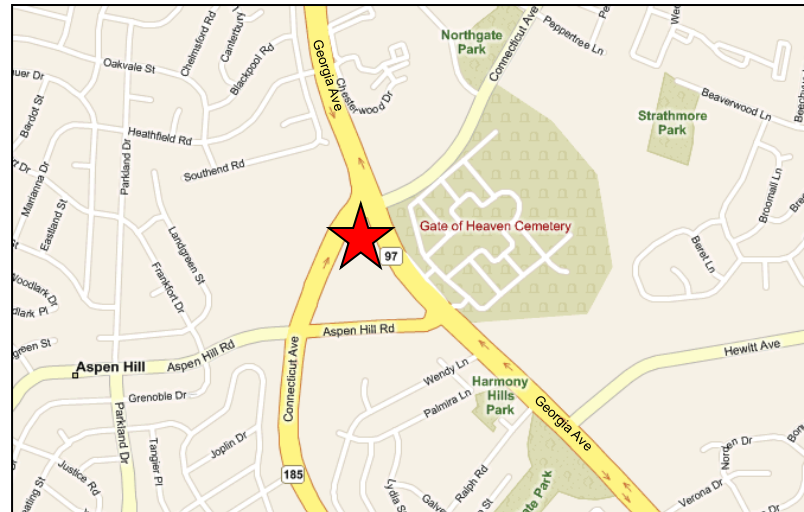
850 – 3,350+/- R.S.F.

Aspen Hill, Maryland 20906

- Flexible terms
- Free surface parking
- Superb glass line
- Newly renovated common areas
- 24-hour Datawatch access control
- Onsite banking
- Steps from shops and restaurants



Conveniently located at the intersection of Connecticut and Georgia Avenue



For more details or to arrange a tour contact:

Jack Alexander

jalexander@amrcommercial.com

301.961.9696

Although all information furnished is from sources we deem reliable, such information has not been verified and no express representation is made nor is any to be implied as to the accuracy thereof, and it is submitted subject to errors, omissions, or other conditions.



COMMERCIAL, LLC.

ALEXANDER, MONTROSE, RITTENBERG
Commercial Real Estate Brokerage

Est. 1994

Celebrating
32
Years
1994-2026

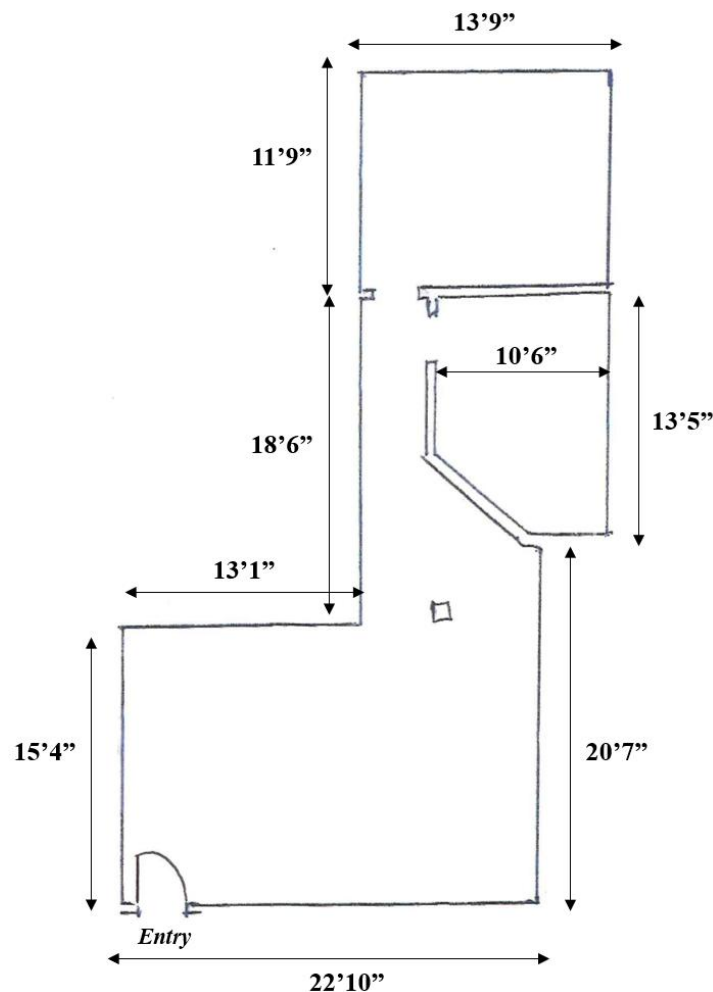
SPACE FOR LEASE

The Truist Building

13975 Connecticut Avenue

Suite 210 - 850+/- R.S.F.

Aspen Hill, Maryland 20906



Measurements approximate / Not to scale

Although all information furnished is from sources we deem reliable, such information has not been verified and no express representation is made nor is any to be implied as to the accuracy thereof, and it is submitted subject to errors, omissions, or other conditions.



COMMERCIAL, LLC.

ALEXANDER, MONTROSE, RITTENBERG
Commercial Real Estate Brokerage

Est. 1994

Celebrating
32
Years
1994-2026

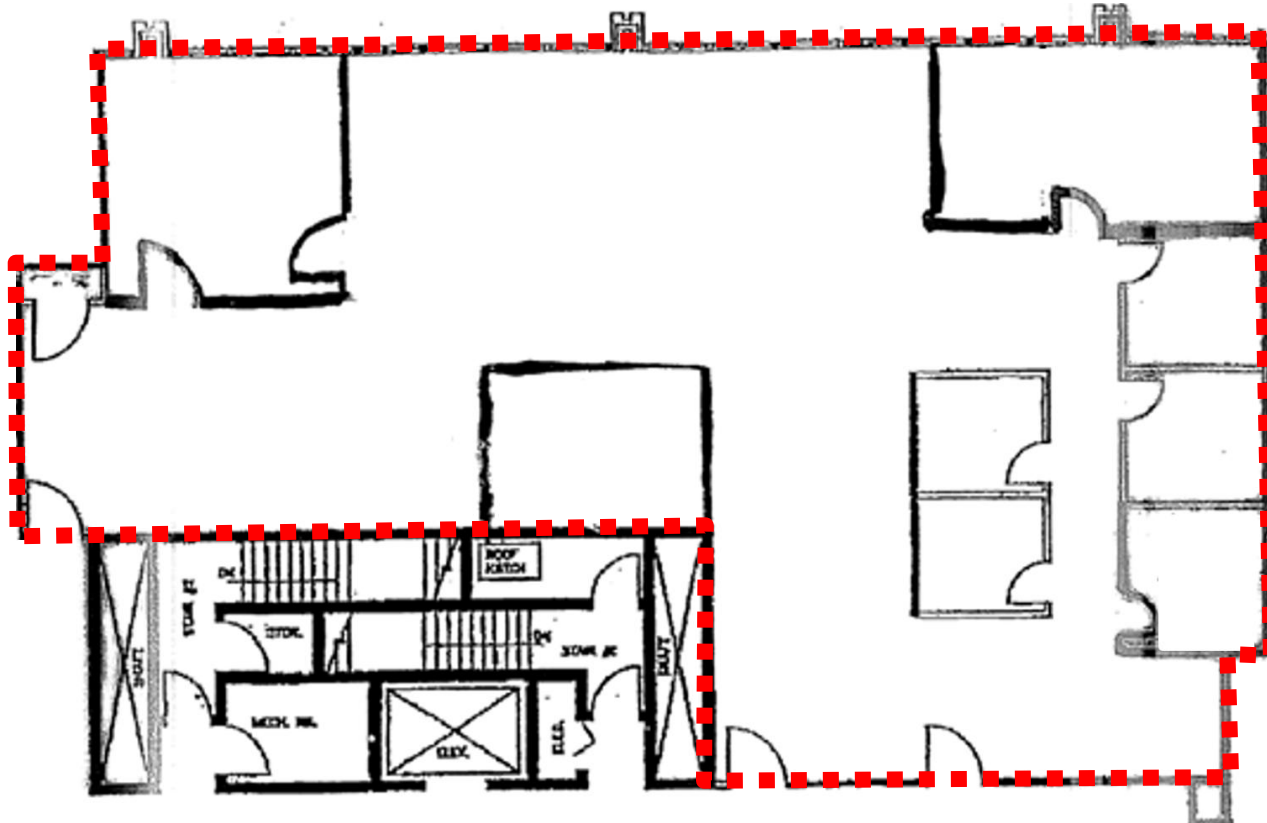
SPACE FOR LEASE

The Truist Building

13975 Connecticut Avenue

Suite 300 – 3,350+/- R.S.F.

Aspen Hill, Maryland 20906



Measurements approximate / Not to scale

Although all information furnished is from sources we deem reliable, such information has not been verified and no express representation is made nor is any to be implied as to the accuracy thereof, and it is submitted subject to errors, omissions, or other conditions.



COMMERCIAL, LLC.

ALEXANDER, MONTROSE, RITTENBERG
Commercial Real Estate Brokerage

Est. 1994

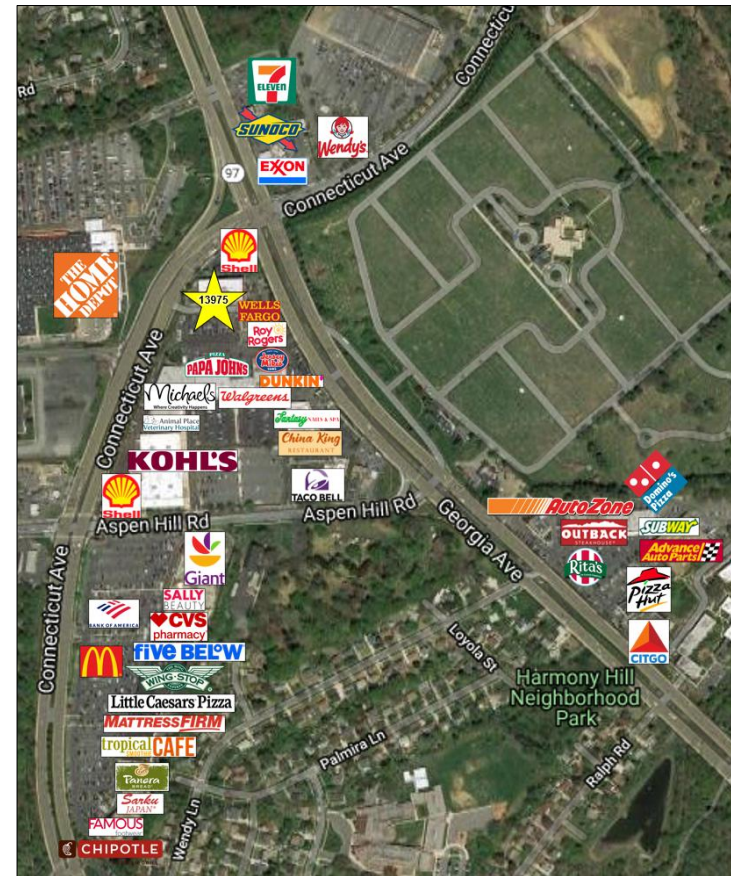
Celebrating
32
Years
1994-2026



SPACE FOR LEASE

The Truist Building

13975 Connecticut Avenue
Aspen Hill, Maryland 20906



Although all information furnished is from sources we deem reliable, such information has not been verified and no express representation is made nor is any to be implied as to the accuracy thereof, and it is submitted subject to errors, omissions, or other conditions.