

# 648

MOVE IN READY  
**MEDICAL & OFFICE Suites**  
AVAILABLE

PRIME  
**LOCATION**  
Off Exit 9 (I-87)

SPACE FOR YOUR **EXPANDING**  
ORGANIZATIONAL NEEDS

**ABUNDANT** PARKING FOR  
EMPLOYEES, CLIENTS, & PATIENTS

**REPUTABLE** FULL SERVICE  
PROPERTY MANAGEMENT TEAM

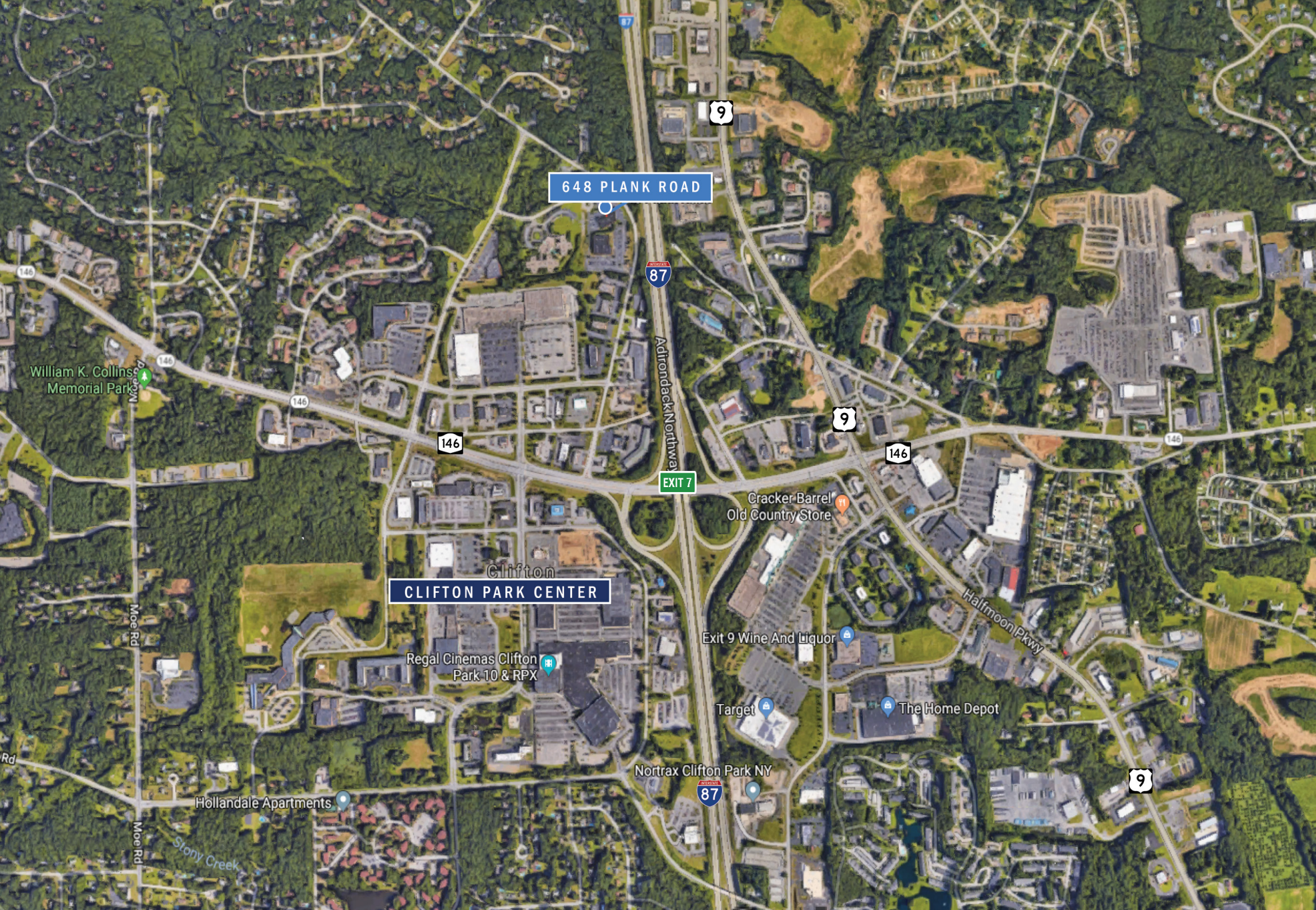
**NOW LEASING**

648 Plank Road . Clifton Park . New York . 12065

**FIRST COLUMBIA**  
INNOVATIVE BUILDING & DEVELOPMENT

© First Columbia









## THE BEST ACCESS IN THE CAPITAL DISTRICT

648 Plank Road (Plank Road Medical Center) is a two-story 25,000 SF class "A" office building located in Clifton Park, NY. The property offers its tenants plenty of parking, easy access to major highways, close proximity to shopping and restaurants, and a well-maintained office space with reputable landlords and property management team.

648 Plank Road is located in the heart of Clifton Park, NY with a prime location just a 1/2 mile from Exit 9W of I-87 (the Northway).



648 Plank Road



Three Suites Available For Lease: OFFICE & MEDICAL SPACE

**Suite 203: 4,952 SQ.FT.**

**Suite 204: 1,760 SQ.FT.**

Located just off Exit 9 of I-87

Within Prime Retail Corridor of Clifton Park, Plenty of Amenities Surrounding Site

Abundant Parking for Employees, Clients, & Tenants

Close Proximity to St. Peter's Health Partners Schuyler Ridge Nursing & Rehabilitation Facility

Join Tenants Including: Seton Health PT, Albany Advanced Imaging, & Adirondack Oral & Maxillofacial Surgery

**CONTACT:**  
CECELIA BETTE  
*Leasing*

(o) 518.213.1005 . (c) 518.605.3142  
[ceceliabette@firstcolumbia.com](mailto:ceceliabette@firstcolumbia.com)

**FIRST**  
COLUMBIA

**PROPERTY PROFILE**

648 PLANK ROAD . CLIFTON PARK . NEW YORK . 12065

Suites Can be combined to up to multiple floor plan layouts.

**Suite 203: 4,952 SQ.FT.**

**Suite 204: 1,760 SQ.FT.**

