

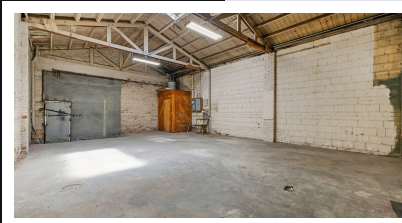
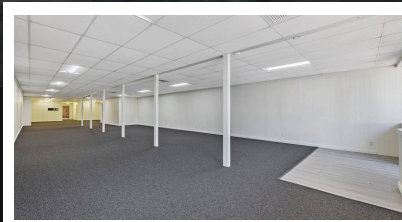


220 S. K ST. TULARE, CA

FOR
LEASE

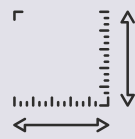
PER
MONTH

\$2500



Discover a prime 3500+ sq ft commercial space in the heart of downtown Tulare, featuring a modern interior with new carpet, fresh paint, and upgraded electricals. This versatile property includes a high-ceilinged back area ideal for a workshop, convenient alleyway access for large deliveries, and two additional office spaces. Positioned in the up-and-coming downtown district, this property offers a unique opportunity to establish your business in a thriving and dynamic location.

PROPERTY DETAIL



3562 SQ FT



HIGH FOOT TRAFFIC



RETAIL READY

GET IN TOUCH

559-684-2728

www.AHerreraRE.com

DRE# 02240548