

FREE STANDING RETAIL / FLEX

FOR SALE

9430 HIGHWAY 78

\$1,500,000



RE/MAX
COMMERCIAL®

RE/MAX Southern Shores
Robert Pratt
(843) 343-6085:cell
robert@robertpratt.com

9430 HIGHWAY 78

| LADSON |

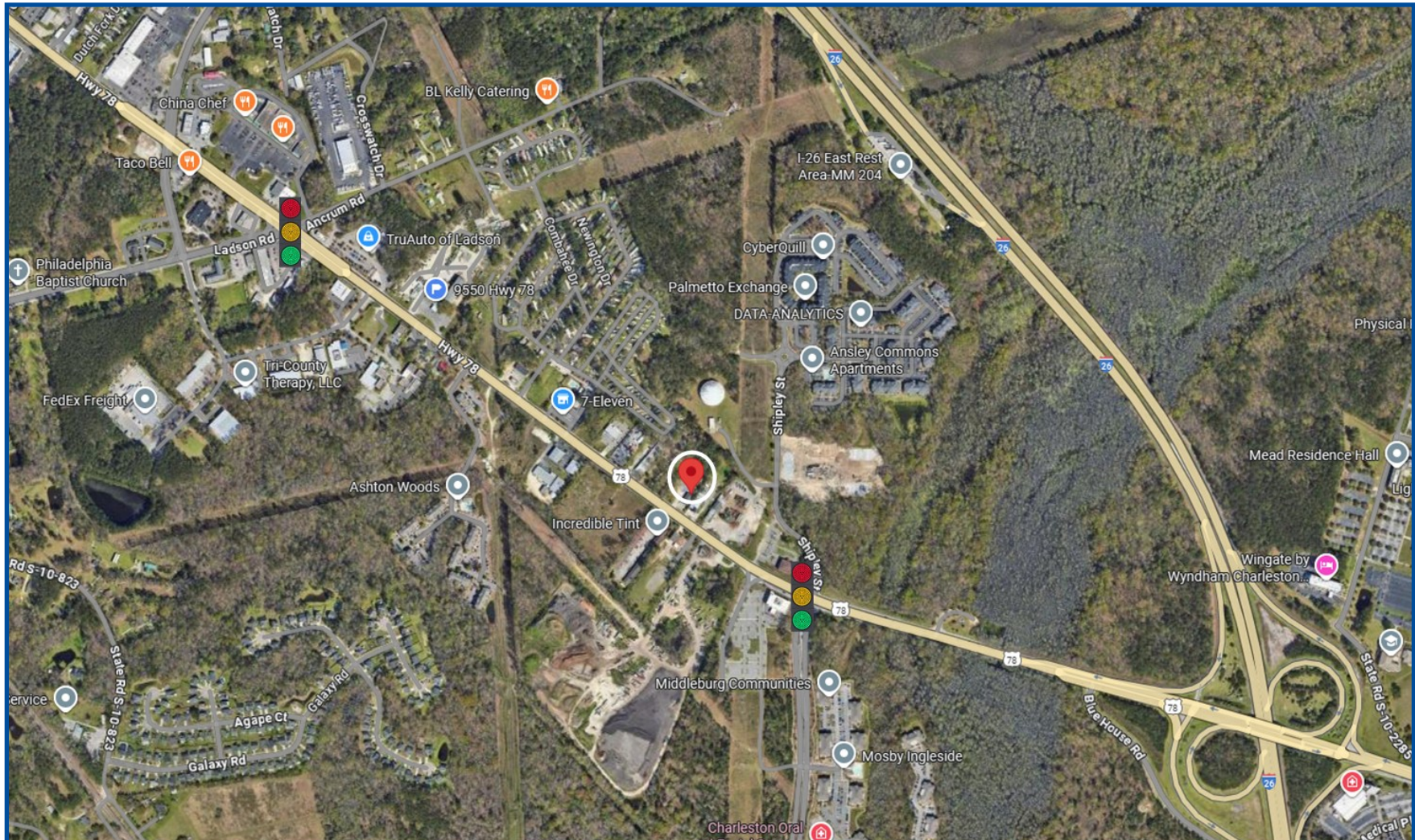
SOUTH CAROLINA

FREE STANDING RETAIL / FLEX

FOR SALE

9430 HIGHWAY 78

\$1,500,000



RE/MAX
COMMERCIAL®

RE/MAX Southern Shores
Robert Pratt
(843) 343-6085:cell
robert@robertpratt.com

9430 HIGHWAY 78

| LADSON

| SOUTH CAROLINA

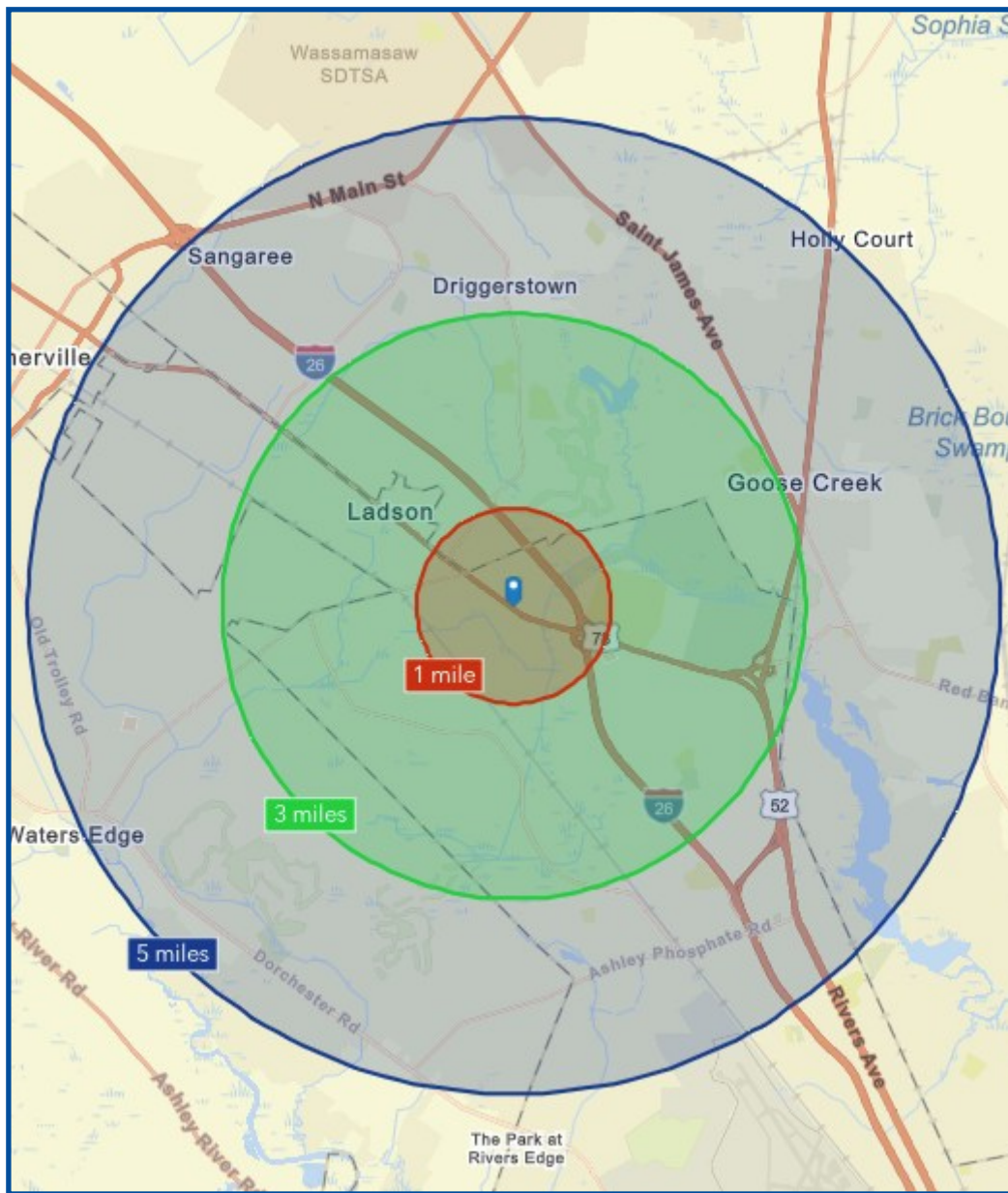
9430 HIGHWAY 78

\$1,500,000



- Two Buildings (Approximately 2,749sf and 2,430sf) on Approximately 1.87 Acre
- Fronting US Highway 78 (Approximately 175') and Just 0.6 Mile to I-26
- Long-Standing Tenant in Place
- Investment or End-User Opportunities
- Excellent Visibility with 46,200vpd (SCDOT)
- Zoned Community Commercial in Charleston County
- Charleston County TMS 487-00-00-005 & 006
- Centrally Located on US Highway 78 in Ladson, Just 0.65 Mile from I-26 at Exit 205 and 1.45 Mile from I-26 at Exit 203
- **\$1,500,000**

RE/MAX Southern Shores
Robert Pratt
(843) 343-6085:cell
robert@robertpratt.com



1m

4,294

Population



2,065

Households



\$83,449

Median Household
Income

3m

58,492

Population



23,734

Households



\$86,536

Median Household
Income

5m

196,793

Population



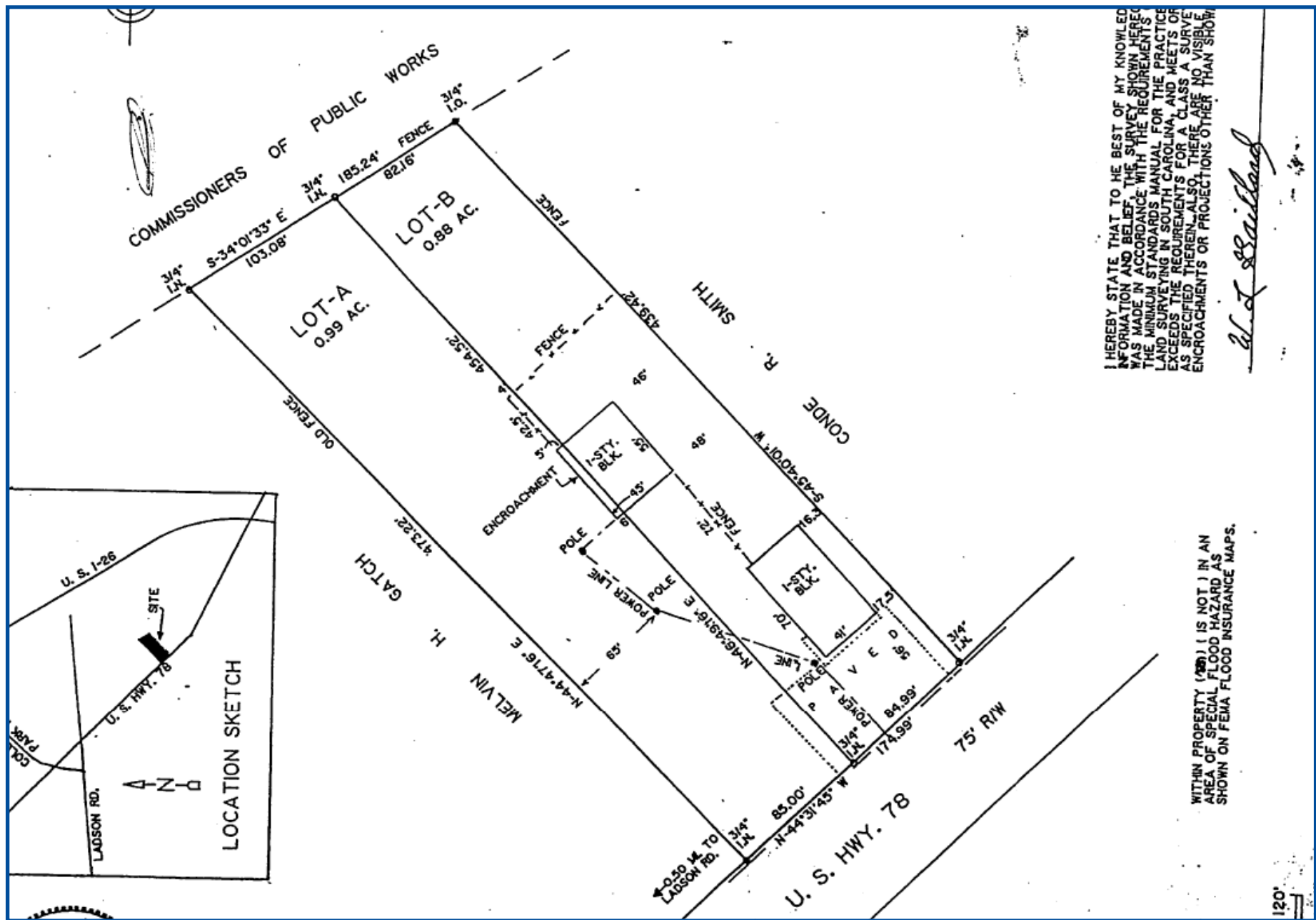
78,862

Households



\$77,195

Median Household
Income



FREE STANDING RETAIL / FLEX

FOR SALE

9430 HIGHWAY 78

\$1,500,000



RE/MAX
COMMERCIAL®

RE/MAX Southern Shores
Robert Pratt
(843) 343-6085:cell
robert@robertpratt.com

9430 HIGHWAY 78

| LADSON

| SOUTH CAROLINA