

TOEPPERWEIN MEDICAL CENTER

12602 Toepperwein Rd. | Live Oak, Texas 78233


STREAM



TOEPPERWEIN MEDICAL CENTER

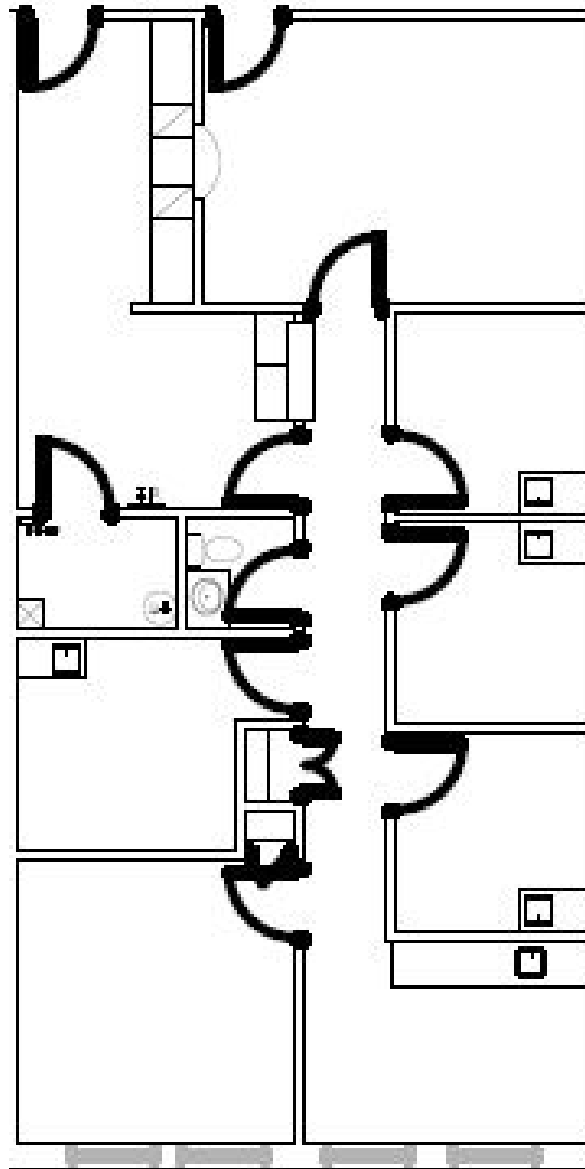
Medical Office Space For Lease

Toepperwein Medical Center is a two-story medical office building located in the rapidly growing city of Live Oak. This building offers second generation medical office space strategically located across the street from the only hospital in the Northeast submarket, Northeast Methodist Hospital. The location allows for easy ingress and egress to IH-35 with close proximity to multiple retail, restaurant, and hospitality amenities.

This building has ample free surface parking along with a safe drive through porte cochere for convenient patient drop off and pick-up. Tenants benefit from 24-hour key card access along with covered parking spaces and referral opportunities in the building. Ancillary services including South Texas Radiology Imaging Centers (STRIC) and Labcorp are located on the property for patient convenience.

TOEPPERWEIN MEDICAL CENTER

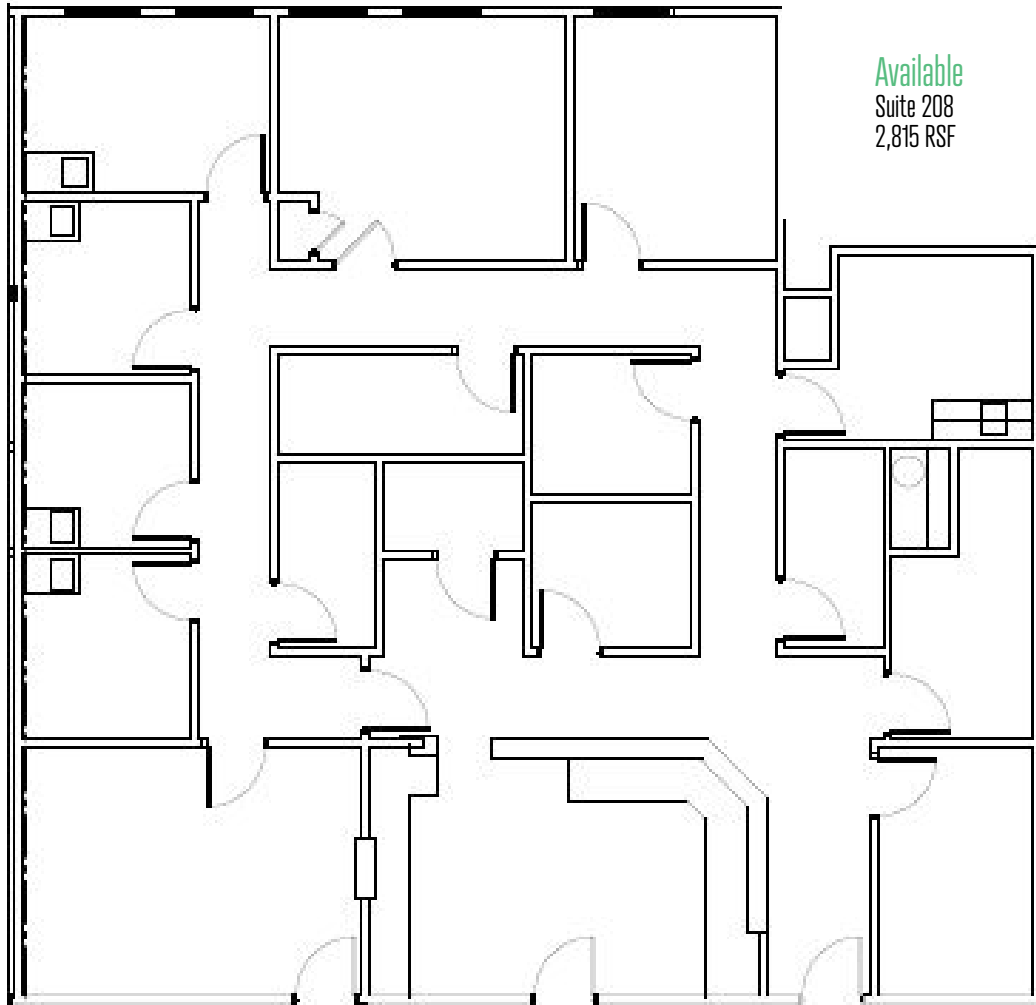
Level 2



Available
Suite 207
1,505 RSF

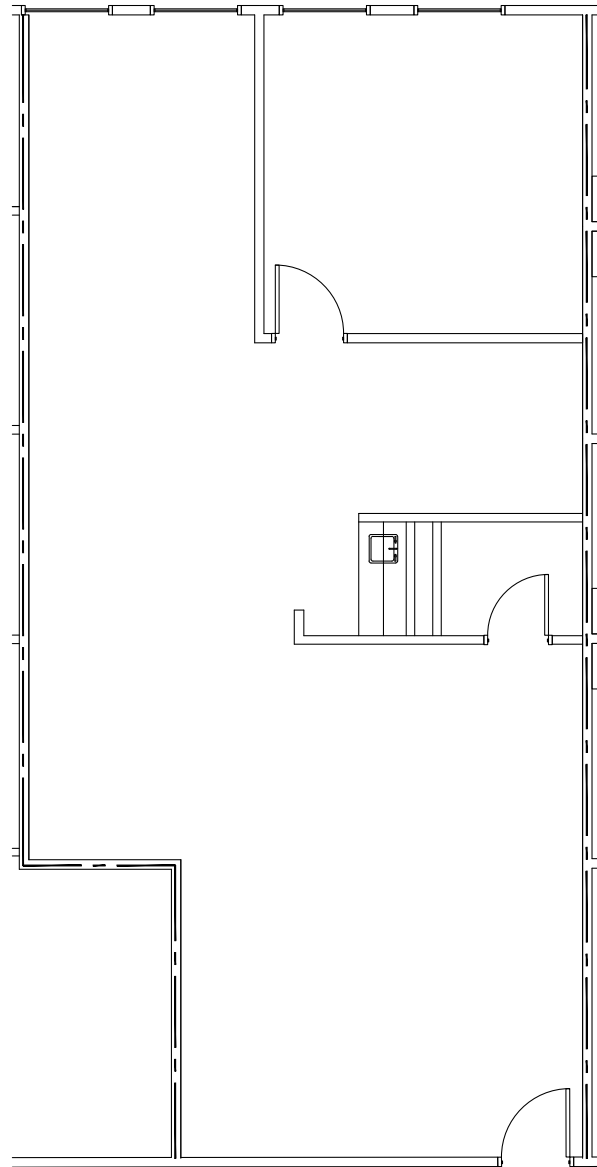
TOEPPERWEIN MEDICAL CENTER

Level 2



TOEPPERWEIN MEDICAL CENTER

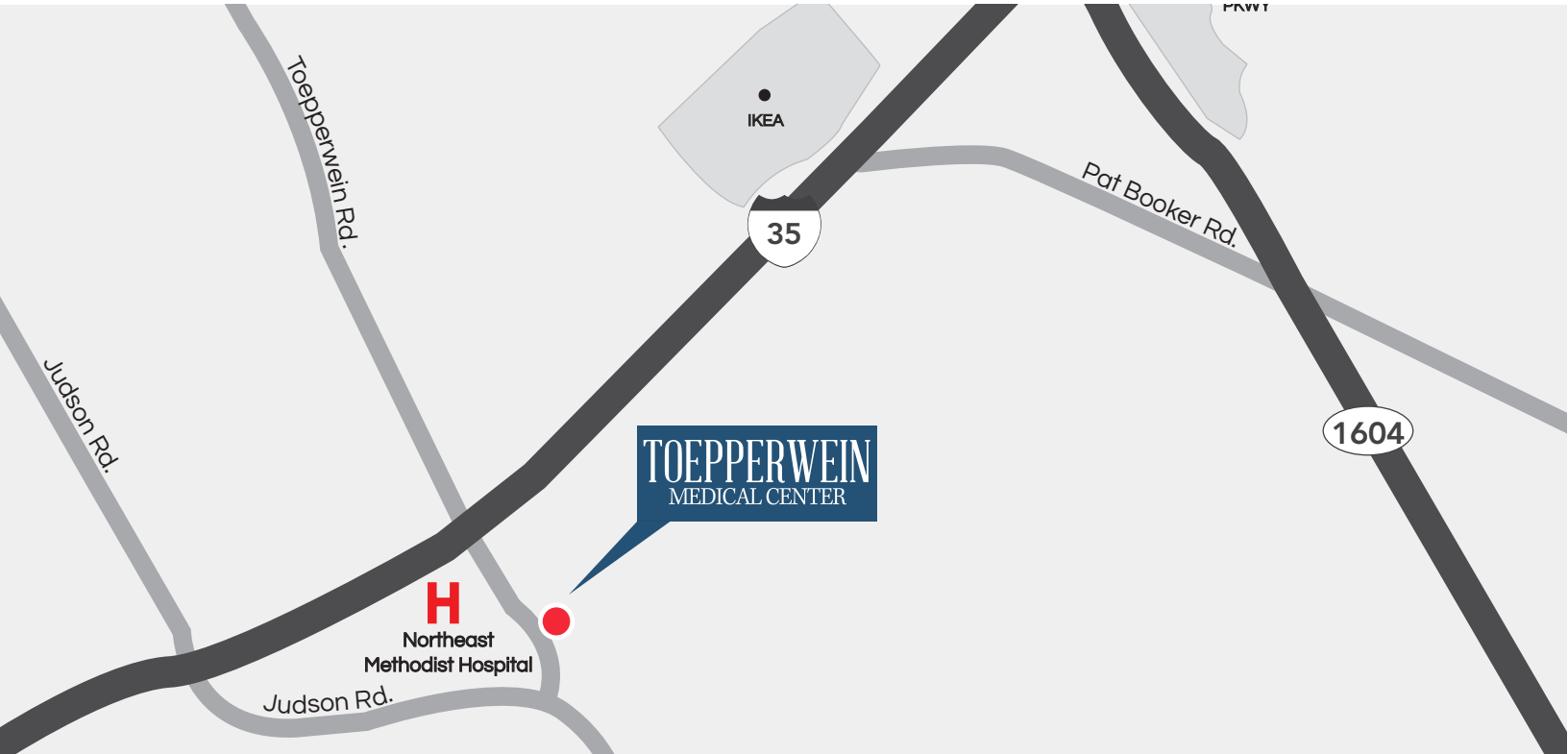
Level 2



Available
Suite 210
1,224 RSF

Nearby Map & Amenities

(1 Mile Radius)



RESTAURANTS

Olive Garden Italian Restaurant
 LongHorn Steakhouse
 Texas Roadhouse
 Buffalo Wild Wings
 Kobe Teppan & Sushi
 Whataburger

Denny's
 Biff Buzby's Burgers
 Beer Goggles Pub
 Subway
 Williams Confectionery Crafts
 Papa John's Pizza

HOTELS

WoodSpring Suites
 La Quinta Inn

Best Western Garden Inn

BANKS

Northeast Methodist Hospital ATM
 Corner Store ATM

GAS

Exxon
 Sam's Club Gas Station
 QuikTip
 Circle K
 Valero
 Chevron

SHOPPING

San Antonio Auto Auction
 Ikea
 Jordan Ford
 World Car Nissan
 World Car Hyundai North
 Sam's Club
 Roddick Total Tennis
 World Car Mazda North
 Outlaw Off-Road + Performance

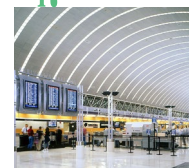
Universal Toyota
 Majors Body & Paint
 Drive Time Used Cars
 Avis Car Sales
 Superior Water Softeners
 Take 5 Oil Change
 Jay's Car Wash/Self Service
 Dollar General

Nearby Distances

Downtown S.A.
16 Minutes



SA Intl Airport
17 Minutes



South TX Medical Ctr
20 Minutes



TOEPPERWEIN MEDICAL CENTER

12602 Toepperwein Rd. | Live Oak, Texas 78233

Contact Information



LEE MCKENNA | MANAGING DIRECTOR

210.298.8532

lee.mckenna@streamrealty.com

ALLIE SLEDGE | ASSOCIATE

210.298.8512

allie.sledge@streamrealty.com