

LINCOLN ROAD MIAMI BEACH

FULLY BUILT-OUT OFFICE SPACE

560 Lincoln Road
Miami Beach, FL 33139

FOR LEASE

Suite 201



www.chariff.com

Lyle Chariff
President/Broker
(305) 576-7474
lyle@chariff.com

Mauricio Zapata
Principal/Broker
(305) 576-7474
mauricio@chariff.com

 @chariff

 @chariff

 @chariffrealty

305-576-7474

5801 Biscayne Blvd
Miami, Florida 33137

info@chariff.com

All information has been secured from the seller/lessor and Chariff Realty Group, Inc. and its agents, employees and representatives (collectively "Chariff") make no representations and/or warranties as to the accuracy thereof, all of which are expressly not warranted, disclaimed and must be verified by the buyer/lessee prior to purchase/lease. All information from Chariff is subject to errors, omissions, change, and withdrawal without notice. Any reference to age, market data, condition, suitability and/or square footage must be verified and is not guaranteed by Chariff. Buyer/lessee bears all risk of information provided by Chariff.



OFFICE SUITE 201:

1,680 SF ±

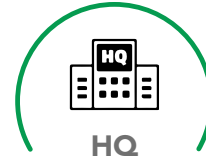
LEASING RATE:

\$29/ PSF MG

ZONING:

CD-3

Ideal Uses Include:

**Creative
Office****Architecture
Firm****HQ
Offices****Design
Agency**

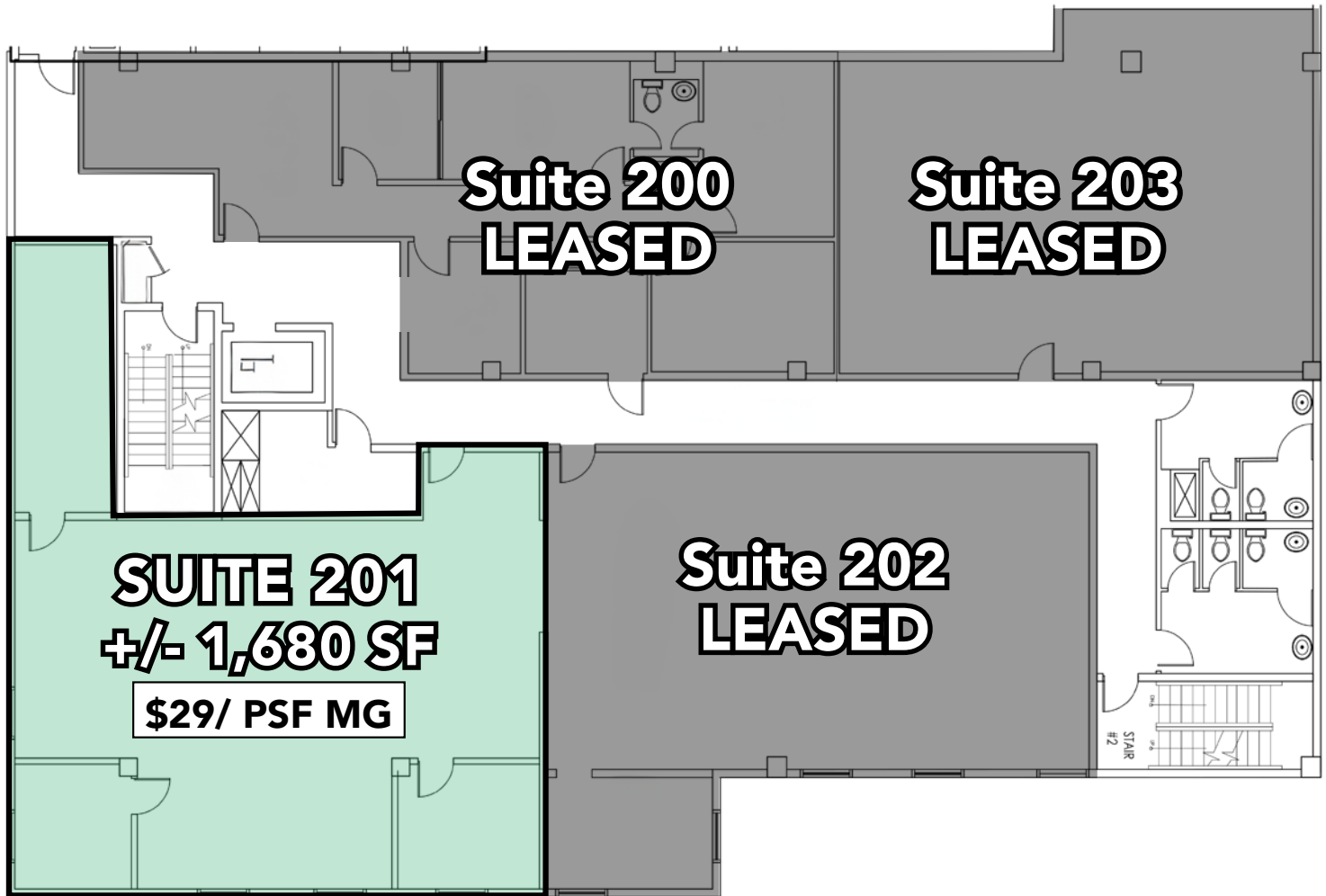
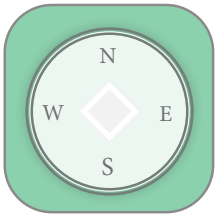
PROPERTY HIGHLIGHTS

- Exclusive office space for lease located at 560 Lincoln Road
- Up to 1,680 SF +/- of office available
- On-site parking available
- Leasing rate is \$29/ PSF Modified Gross
- Benefit from the sophistication of having a Lincoln Road address
- Walking distance to big names such as Nike, Apple, Lululemon, Starbucks, Gap, All Saints, H&M, and The Cheesecake Factory on opposite corner



LOCATION HIGHLIGHTS

- 560 Lincoln Road fronts Miami Beach's world-famous pedestrian shopping center Lincoln Road Mall
- The area is thriving with countless shops, restaurants, art and entertainment
- Plenty of nearby parking garages and street parking
- Walking distance to Art and Entertainment: Miami Beach Convention Center, The Fillmore Theater, New World Center, Soundscape Park, and more


www.chariff.com

Lyle Chariff
President/Broker
(305) 576-7474
lyle@chariff.com

Mauricio Zapata
Principal/Broker
(305) 576-7474
mauricio@chariff.com

@chariff

@chariff

@chariffrealty

305-576-7474

5801 Biscayne Blvd
Miami, Florida 33137

info@chariff.com

All information has been secured from the seller/lessor and Chariff Realty Group, Inc. and its agents, employees and representatives (collectively "Chariff") make no representations and/or warranties as to the accuracy thereof, all of which are expressly not warranted, disclaimed and must be verified by the buyer/lessee prior to purchase/lease. All information from Chariff is subject to errors, omissions, change, and withdrawal without notice. Any reference to age, market data, condition, suitability and/or square footage must be verified and is not guaranteed by Chariff. Buyer/lessee bears all risk of information provided by Chariff.



www.chariff.com

Lyle Chariff
President/Broker
(305) 576-7474
lyle@chariff.com

Mauricio Zapata
Principal/Broker
(305) 576-7474
mauricio@chariff.com

305-576-7474

5801 Biscayne Blvd
Miami, Florida 33137

info@chariff.com

 @chariff

 @chariff

 @chariffrealty

All information has been secured from the seller/lessor and Chariff Realty Group, Inc. and its agents, employees and representatives (collectively "Chariff") make no representations and/or warranties as to the accuracy thereof, all of which are expressly not warranted, disclaimed and must be verified by the buyer/lessee prior to purchase/lease. All information from Chariff is subject to errors, omissions, change, and withdrawal without notice. Any reference to age, market data, condition, suitability and/or square footage must be verified and is not guaranteed by Chariff. Buyer/lessee bears all risk of information provided by Chariff.



www.chariff.com

Lyle Chariff
President/Broker
(305) 576-7474
lyle@chariff.com

Mauricio Zapata
Principal/Broker
(305) 576-7474
mauricio@chariff.com

305-576-7474

5801 Biscayne Blvd
Miami, Florida 33137

info@chariff.com

 @chariff

 @chariff

 @chariffrealty

All information has been secured from the seller/lessor and Chariff Realty Group, Inc. and its agents, employees and representatives (collectively "Chariff") make no representations and/or warranties as to the accuracy thereof, all of which are expressly not warranted, disclaimed and must be verified by the buyer/lessee prior to purchase/lease. All information from Chariff is subject to errors, omissions, change, and withdrawal without notice. Any reference to age, market data, condition, suitability and/or square footage must be verified and is not guaranteed by Chariff. Buyer/lessee bears all risk of information provided by Chariff.



www.chariff.com

Lyle Chariff
President/Broker
(305) 576-7474
lyle@chariff.com

Mauricio Zapata
Principal/Broker
(305) 576-7474
mauricio@chariff.com

@chariff

@chariff

@chariffrealty

305-576-7474

5801 Biscayne Blvd
Miami, Florida 33137

info@chariff.com

All information has been secured from the seller/lessor and Chariff Realty Group, Inc. and its agents, employees and representatives (collectively "Chariff") make no representations and/or warranties as to the accuracy thereof, all of which are expressly not warranted, disclaimed and must be verified by the buyer/lessee prior to purchase/lease. All information from Chariff is subject to errors, omissions, change, and withdrawal without notice. Any reference to age, market data, condition, suitability and/or square footage must be verified and is not guaranteed by Chariff. Buyer/lessee bears all risk of information provided by Chariff.


www.chariff.com

Lyle Chariff
 President/Broker
 (305) 576-7474
lyle@chariff.com

Mauricio Zapata
 Principal/Broker
 (305) 576-7474
mauricio@chariff.com

@chariff

@chariff

@chariffrealty

305-576-7474

 5801 Biscayne Blvd
 Miami, Florida 33137

info@chariff.com

All information has been secured from the seller/lessor and Chariff Realty Group, Inc. and its agents, employees and representatives (collectively "Chariff") make no representations and/or warranties as to the accuracy thereof, all of which are expressly not warranted, disclaimed and must be verified by the buyer/lessee prior to purchase/lease. All information from Chariff is subject to errors, omissions, change, and withdrawal without notice. Any reference to age, market data, condition, suitability and/or square footage must be verified and is not guaranteed by Chariff. Buyer/lessee bears all risk of information provided by Chariff.

S.W TO N.E VIEW



WEST TO EAST VIEW


www.chariff.com

Lyle Chariff
President/Broker
(305) 576-7474
lyle@chariff.com

Mauricio Zapata
Principal/Broker
(305) 576-7474
mauricio@chariff.com

@chariff

@chariff

f @chariffrealty

305-576-7474

5801 Biscayne Blvd
Miami, Florida 33137
info@chariff.com

All information has been secured from the seller/lessor and Chariff Realty Group, Inc. and its agents, employees and representatives (collectively "Chariff") make no representations and/or warranties as to the accuracy thereof, all of which are expressly not warranted, disclaimed and must be verified by the buyer/lessee prior to purchase/lease. All information from Chariff is subject to errors, omissions, change, and withdrawal without notice. Any reference to age, market data, condition, suitability and/or square footage must be verified and is not guaranteed by Chariff. Buyer/lessee bears all risk of information provided by Chariff.

SOUTH TO NORTH VIEW

Labels in the image include:

- MIAMI BEACH BOTANICAL GARDEN
- MIAMI BEACH CITY HALL
- MIAMI BEACH CONVENTION CENTER
- THE FILLMORE
- NEW WORLD CENTER
- SOUNDSCAPE PARK
- HYDE BEACH
- DELANO SOUTH BEACH
- SCOTCH & SODA
- SWATCHES
- H&M
- STARBUCKS COFFEE
- OAKLEY
- ALDO
- PANDORA
- SWAROVSKI
- LIACON ROAD
- Superdry
- THE BEESKAKE FACTORY
- SUBJECT PROPERTY 560 LINCOLN ROAD
- PENNSYLVANIA AVE

EAST TO WEST VIEW

11 Miles to Brickell

9 Miles to Downtown Miami

ALTON ROAD

6 Miles to Wynwood

5.7 Miles to Edgewater

5.4 Miles to Miami Design District

Lincoln Garage

WILLIAMS SONOMA

STARBUCKS

H&M

swatch

ALDO

Superdry

THE BAKERY FACTORY

J.CREW

MAISON MARTIN MARGIELA

560 Lincoln Road

PENNSYLVANIA AVE

LINCOLN ROAD

PARKING



www.chariff.com

Lyle Chariff
President/Broker
(305) 576-7474
lyle@chariff.com

Mauricio Zapata
Principal/Broker
(305) 576-7474
mauricio@chariff.com

 @chariff

 @chariff

f @chariffrealty

305-576-7474

5801 Biscayne Blvd
Miami, Florida 33137

info@chariff.com

All information has been secured from the seller/lessor and Chariff Realty Group, Inc. and its agents, employees and representatives (collectively "Chariff") make no representations and/or warranties as to the accuracy thereof, all of which are expressly not warranted, disclaimed and must be verified by the buyer/lessee prior to purchase/lease. All information from Chariff is subject to errors, omissions, change, and withdrawal without notice. Any reference to age, market data, condition, suitability and/or square footage must be verified and is not guaranteed by Chariff. Buyer/lessee bears all risk of information provided by Chariff.



chariff
REALTY GROUP

5801 BISCAYNE BOULEVARD
MIAMI, FLORIDA 33137

www.chariff.com

(O) 305-576-7474

(F) 305-576-7494

 @chariff

 @chariff

 @chariffrealty

Lyle Chariff

President/Broker

(305) 576-7474

lyle@chariff.com



Mauricio Zapata

Principal/Broker

(305) 576-7474

mauricio@chariff.com

