

990 South Park Drive, Pixley



990 S Park St | Pixley, CA Property For Sale

1005 N Demaree Street  
Visalia, California 93291  
O | 559.754.3020  
F | 559.429.4016  
www.mdgre.com

**GRAHAM** | **& ASSOCIATES**

to learn more, visit: [www.mdgre.com](http://www.mdgre.com)

Jim Abercombie  
Lic# 01917959  
  
Matt Graham  
Lic# 01804235

## PROPERTY DETAILS

**Address:** 990 S Park St | Visalia, CA

**APN:** 299-131-020

**Lot Size:** 1.29 +/- Acres

**Zoning** C-2

**Sales Price** \$500,000.00

### Additional Comments:

Former cardlock facility located in the heart of Pixley with immediate freeway access. Nice open lot area, ready for commercial development. Situated near gas stations, convenience stores and other commercial properties. Please call for further details.



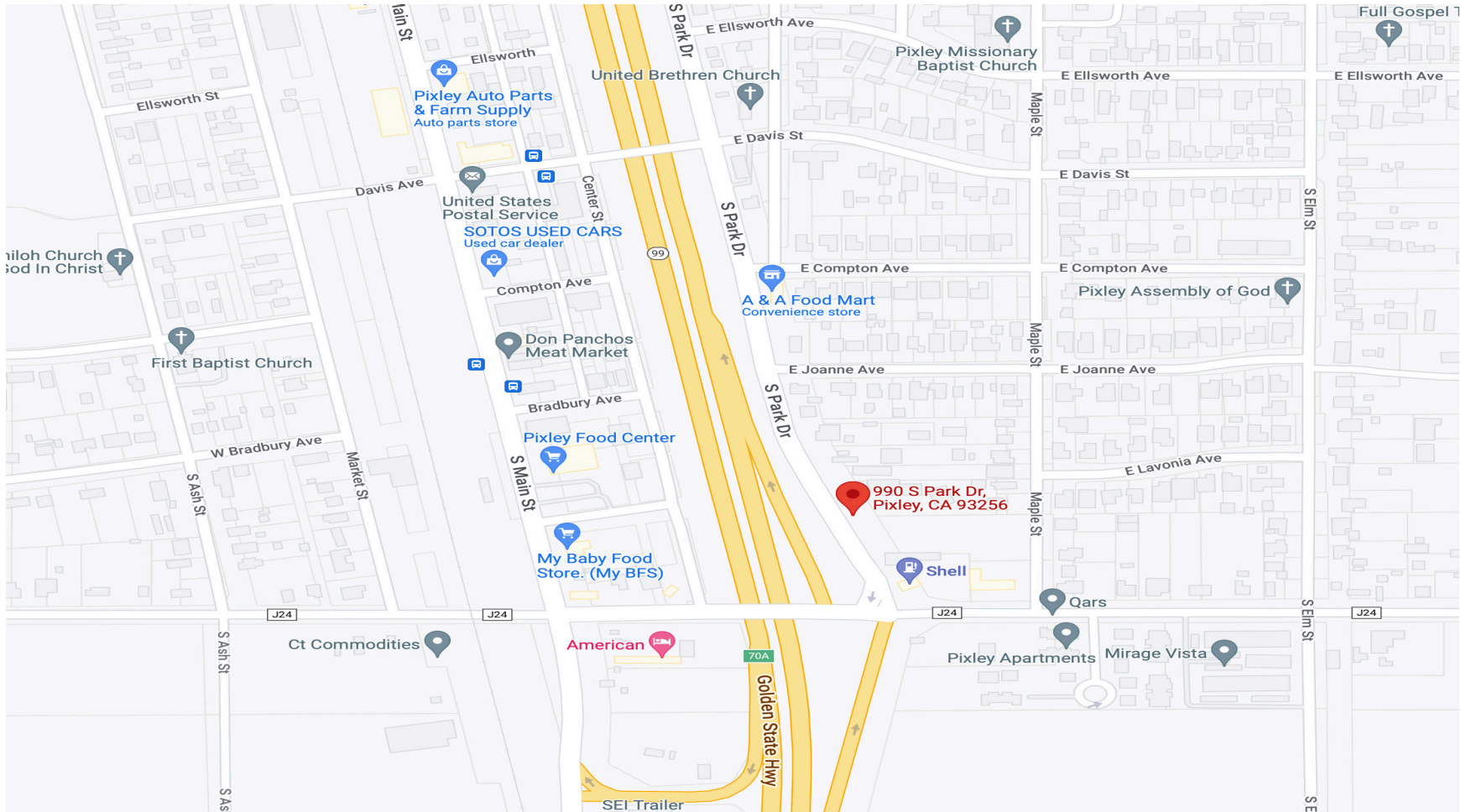
**Contact Broker:**  
Matt Graham  
Lic# 01804235

**to learn more, visit: [www.mdgre.com](http://www.mdgre.com)**

1005 N Demaree Street  
Visalia, California 93291  
O | 559.754.3020

PLEASE NOTE: ALL INFORMATION AND REPRESENTATION MADE HEREIN, WHILE NOT GUARANTEED, HAVE BEEN SECURED FROM SOURCES WE BELIEVE TO BE RELIABLE, HOWEVER, THEY ARE NOT WARRANTED BY MATT GRAHAM & ASSOCIATES AND ARE SUBJECT TO CHANGE WITHOUT NOTICE.

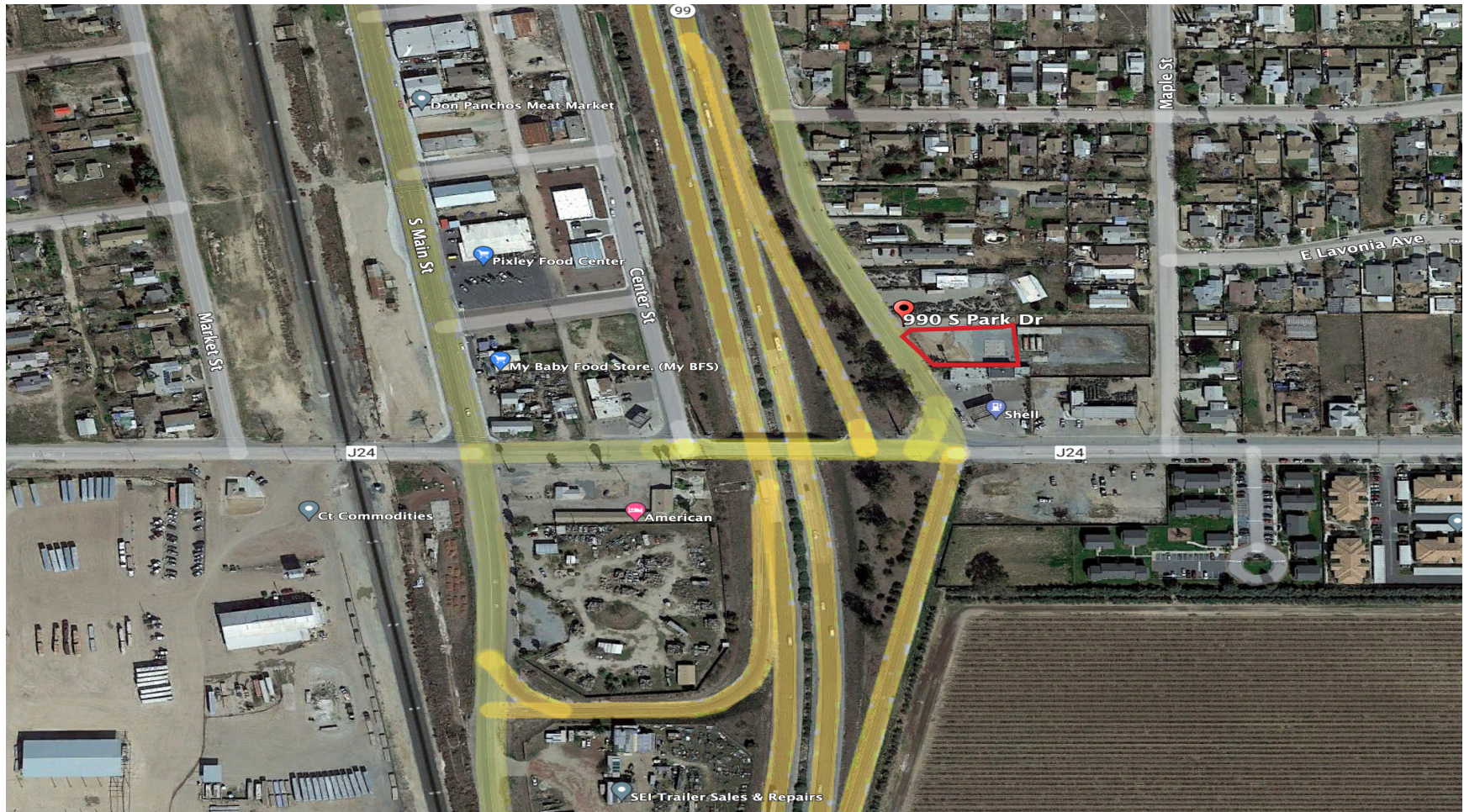
## LOCATION MAP



PLEASE NOTE: ALL INFORMATION AND REPRESENTATION MADE HEREIN, WHILE NOT GUARANTEED, HAVE BEEN SECURED FROM SOURCES WE BELIEVE TO BE RELIABLE, HOWEVER, THEY ARE NOT WARRANTED BY MATT GRAHAM & ASSOCIATES AND ARE SUBJECT TO CHANGE WITHOUT NOTICE.



## PROPERTY LAYOUT



PLEASE NOTE: ALL INFORMATION AND REPRESENTATION MADE HEREIN, WHILE NOT GUARANTEED, HAVE BEEN SECURED FROM SOURCES WE BELIEVE TO BE RELIABLE, HOWEVER, THEY ARE NOT WARRANTED BY MATT GRAHAM & ASSOCIATES AND ARE SUBJECT TO CHANGE WITHOUT NOTICE.