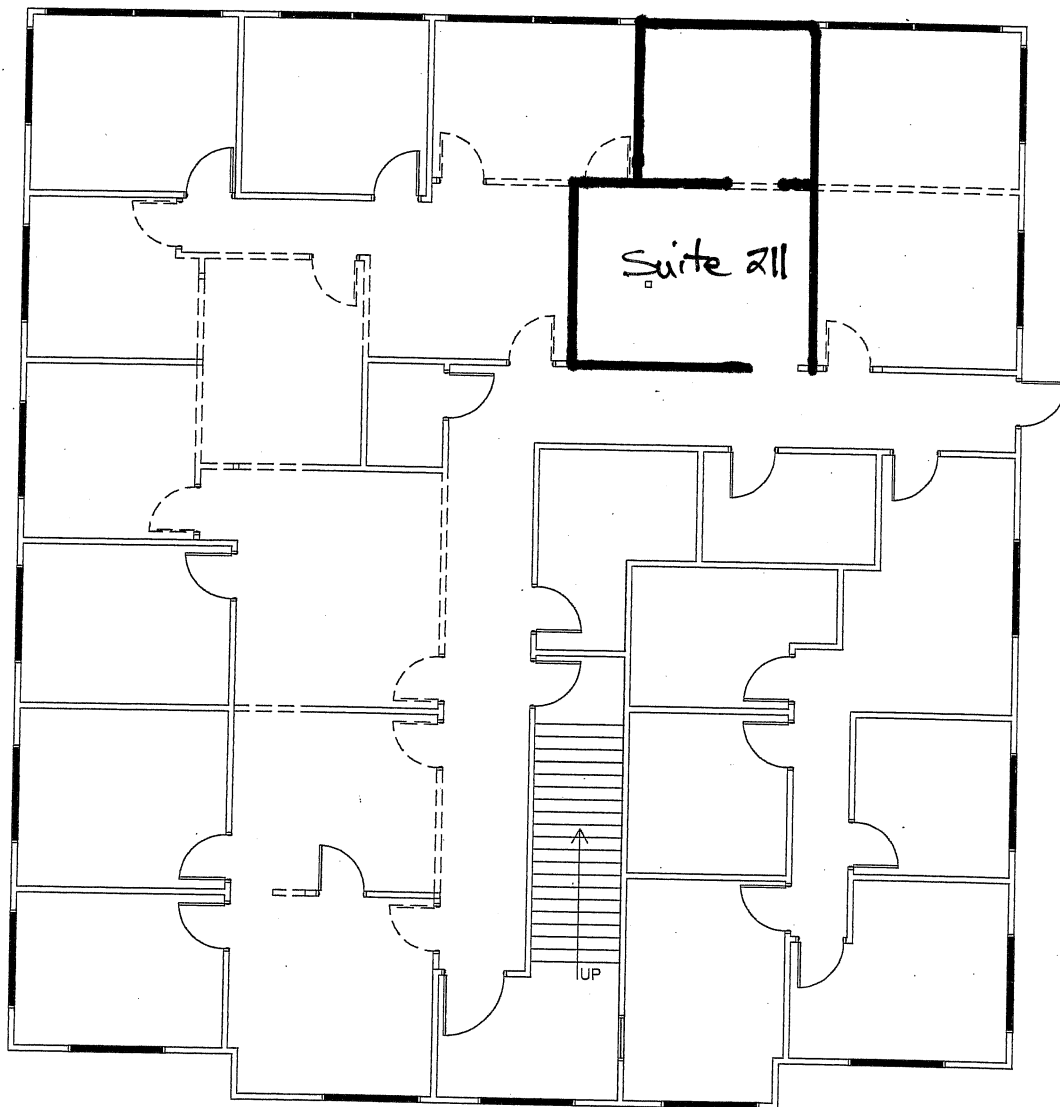


Suite D211



Suite 211

1 AS-BUILT PLAN
 P-1 SCALE: 1/8" = 1'-0"

NOTE:
 THIS PLAN WAS DRAWN WHO THE BENEFIT OF AN ON
 SITE FIELD VERIFICATION. PRIOR TO CONSTRUCTION.
 FACILITEC, INC. RECOMMENDS THAT A VERIFICATION
 IS COMPLETED. IT WILL BE THE RESPONSIBILITY OF
 THE G.C. TO NOTIFY FACILITEC, INC. OF ANY PROBLEMS.
 FACILITEC, INC. SHALL NOT BE HELD RESPONSIBLE FOR
 FOR ANY CODE INFRACTIONS DUE TO THIS MATTER.

ANY FURNITURE OR EQUIPMENT SHOWN IS NIC AND
 ONLY SHOWN FOR PLANNING PURPOSES.

PARTITION TYPE	DESCRIPTION
Note: This is a master list, not all wall types may be used on project. Refer to dimensioned partition plan for partition locations	
E-1	Existing Building Standard Partition to remain
ER	Existing Building standard partition to be removed
E1-A	Existing (1) HR. rated building standard partition G.C. to verify and upgrade as required
T-1	New building standard partition ceiling height
T-1A	New building standard similar to T-1 with sound batts
T-2	New building standard full height partition
T-2A	New Building standard full height partition with sound batts
T-2B	New building standard full height partition with sound batts and moisture resistant gypsum board
T-3	New (1) HR. rated building standard partition
T-4	New building standard low partition HT:

SHEET NO: PRELIMINARY PLAN P-1 OP. 1	REV. DATE DESCRIPTION 06.02.09 AS-BUILT
--	--

DRAWN BY:
 B.USRY
 RSF: 5,000
 JOB #: 09044

HUDDLESTON LAW FIRM
 1290 KENNESSTONE EXECUTIVE CENTER
 BUILDING D
 MARIETTA, GA.
 COBB COUNTY

FACILITEC
 A FACILITEC HOLDINGS GROUP

SUITE 2300
 260 PEACHTREE STREET
 ATLANTA, GA 30303
 (404) 816-8464
 (404) 814-0305 FAX

INDICATED BY THE
 PROPERTY OF THE
 FACILITEC HOLDINGS GROUP
 IT IS TO BE USED ONLY FOR THE
 PROJECT AND NOT FOR ANY OTHER
 PURPOSES.

© 2009 FACILITEC, INC.