



March 2026

Available

2100 Center Square Road, Suite 100, Logan Township, NJ

LogistiCenterSM at Logan

106,655 SF Warehouse Facility For Lease

LogistiCenterSM at Logan is an 1,100 acre, master-planned, Class A business park containing over 7.0 million square feet of warehouse, distribution, and manufacturing space.

The property is located at Exit 10 of I-295 and Exit 2 of the New Jersey Turnpike. Within 15 miles of the Delaware River ports in Camden, Philadelphia, and Wilmington.

- 20 minutes to Philadelphia International Airport
- Just minutes to three Delaware River ports
- Immediate access to NJ Turnpike and I-295



Marc Isdaner

Vice Chair

+1 609 332 7566

marc.isdaner@colliers.com

Ian Richman

Executive Vice President

+1 856 414 1257

ian.richman@colliers.com

Colliers

250 Century Parkway, Suite 100

Mount Laurel, NJ 08054

+1 856 234 9300



View online at
colliers.com/p-usa1155585



Property Overview

Available Space 106,655 SF

Office Space ±5,372 SF

Loading

- 22 tailgate doors
- 2 drive-in doors
- * cross docked facility

Ceiling Height 32' clear

Column Spacing 60' x 60'

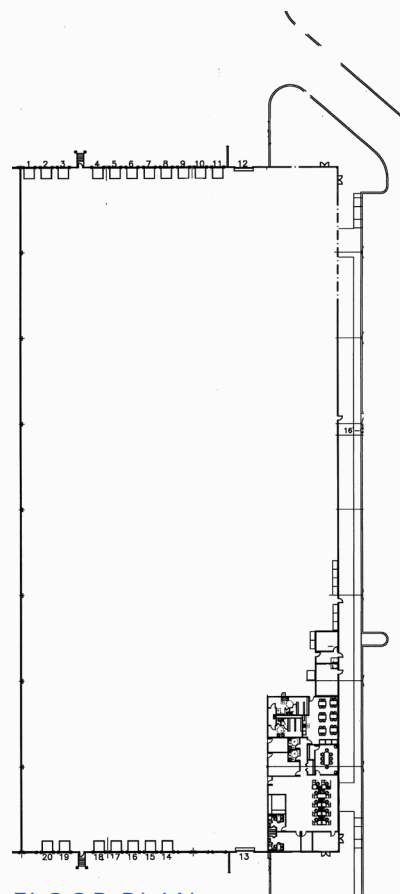
Lighting T-5

Power 480/277 volt, 800-amp

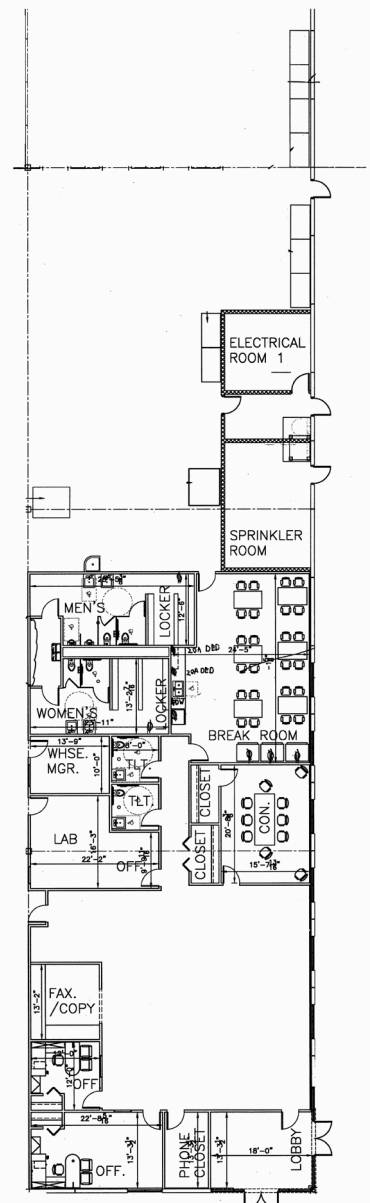
Fire Supression ESFR sprinkler system

Parking

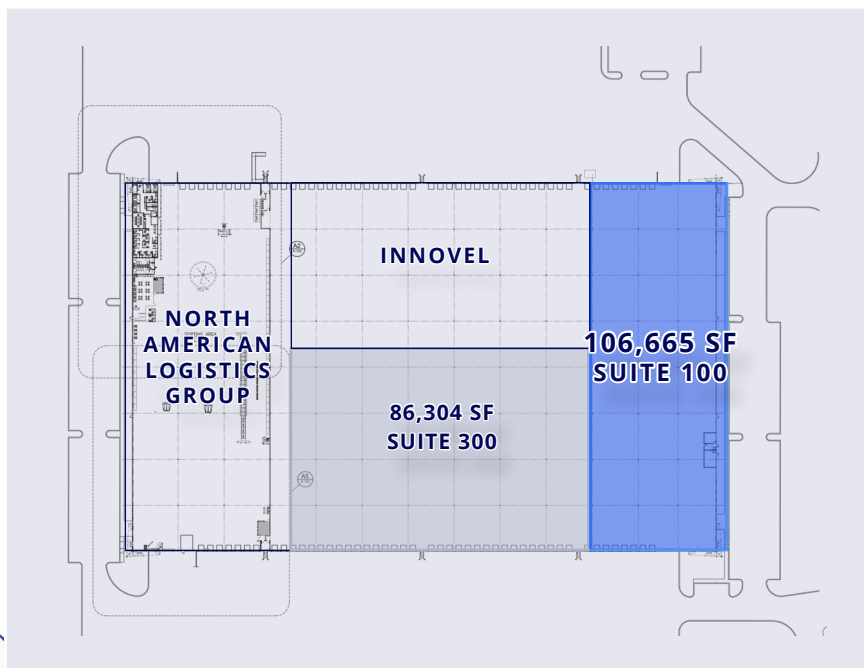
- 96 car parking spaces
- 9 trailer parking stalls



FLOOR PLAN

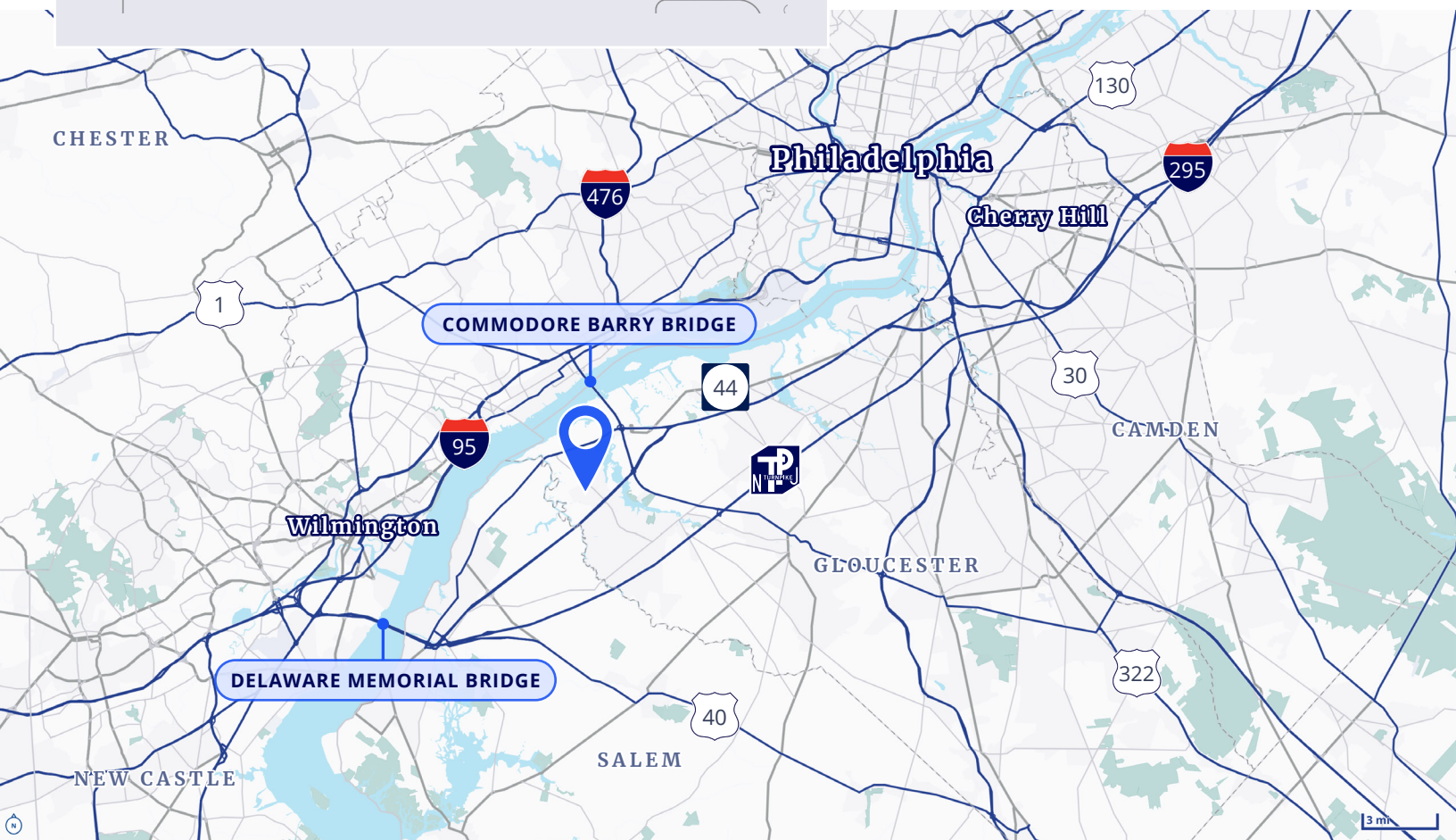


OFFICE PLAN



Drive Times

Interstate 295	3 minutes (1.1 mi)
NJ Turnpike	8 minutes (4.4 mi)
Commodore Barry Bridge	13 minutes (8.4 mi)
Delaware Memorial Bridge	15 minutes (14 mi)
Philadelphia International Airport	20 minutes (15.7 mi)
Atlantic City International Airport	62 minutes (64 mi)



Marc Isdaner

Vice Chair

+1 609 332 7566

marc.isdaner@colliers.com

Ian Richman

Executive Vice President

+1 856 414 1257

ian.richman@colliers.com

250 Century Parkway, Suite 100

Mount Laurel, NJ 08054

+1 856 234 9300

colliers.com/philadelphia

