



**FULLY FENCED AND PAVED YARD**

**Building Rate: \$1.00 PSF NNN**

**Yard Rate: \$.12 PSF**

## Property Details

Size: 6,715 SF  
Office: 3,770 SF  
Warehouse: 2,945 SF  
Door: (1) 14'x12' GL  
Ceiling: 14' Clear  
Zoning: M (Industrial)

- Fully fenced and paved storage yard
- Tenant can choose their size of yard from 0.5-1.0 Acre
- Great office layout with large bullpen, multiple private offices, and conference room
- I-215 visibility
- Close access to 201 Hwy from Redwood Road



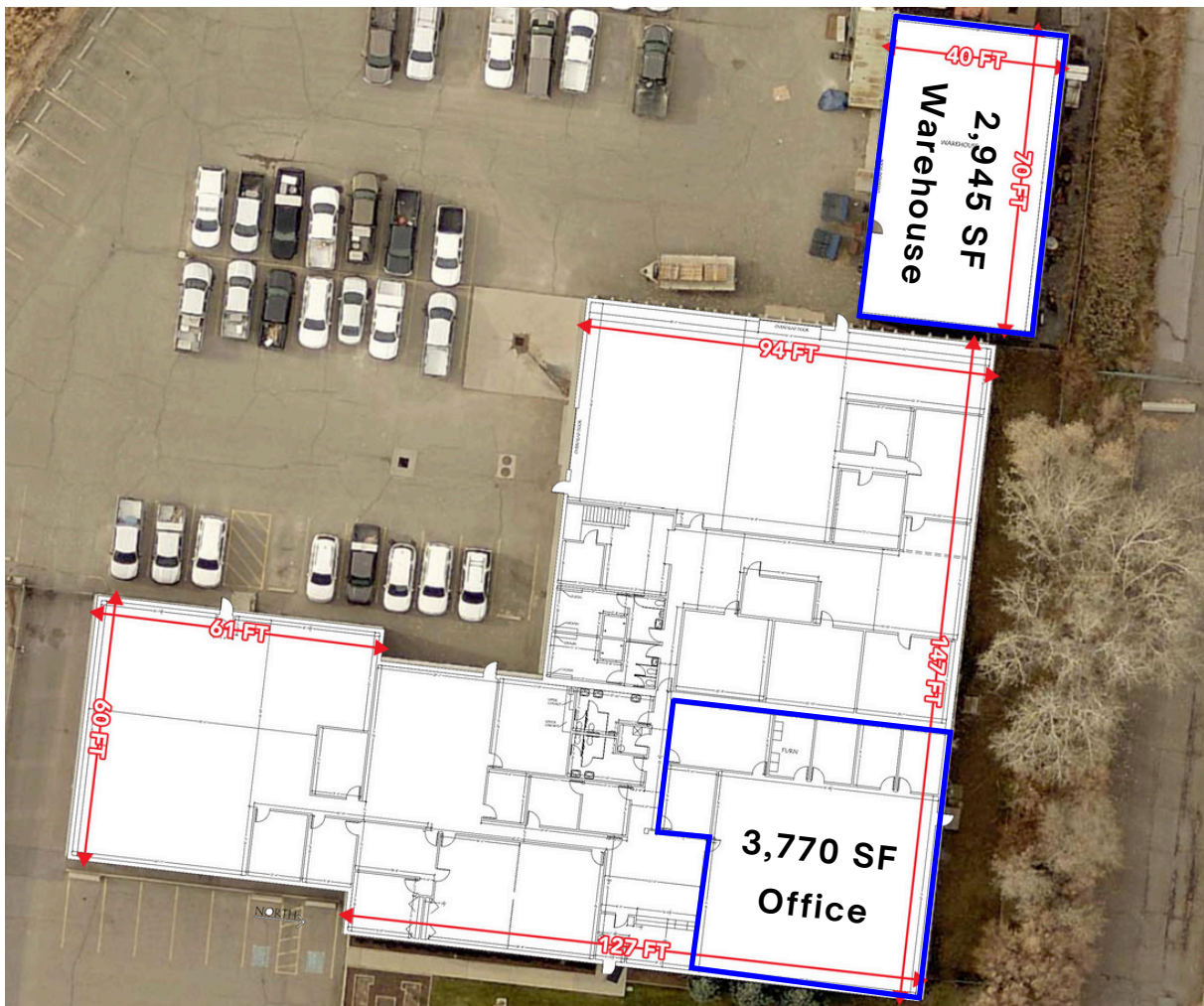
Bob Mills  
385.988.6477  
bob@adventut.com

Riley Mills  
385.988.6478  
riley@adventut.com



# SUBLEASE- 6,715 SF Office/Warehouse with 1 Acre of Yard

## West Valley City, Ut



Bob Mills                      Riley Mills  
385.988.6477              385.988.6478  
bob@adventut.com      riley@adventut.com

Advent Property Advisors: 5284 S. Commerce Drive, #C-274, Murray, Ut