



1125 Lebourgneuf Blvd

Office space for rent

COMMENTS

- Fully furnished office space
- Easy access by public transit and quick access to highways
- Close to Galeries de la Capitale, with numerous restaurants et services

Contact

JEAN-SÉBASTIEN ROUSSY
Director of Leasing
T 418 626 4141
js@debertin.ca

MICKAEL BERNIER
Leasing Advisor
T 418 626 4141
mickael@debertin.ca

DEBERTIN IMMOBILIER
1165 Boulevard Lebourgneuf,
bureau 180, Québec (Québec) G2K 2C9

debertin.ca

DEBERTIN





Rental conditions

AVAILABLE SPACE:	19,732 SF
FLOOR:	3 RD floor, full divisible from 8,000 SF and up
NET RENTAL RATE*:	\$17.00 + 3% per year
TAXES & OPERATING EXPENSES (EST)* :	\$11.93
PARKING :	Indoor \$70.00 per month Outdoor free

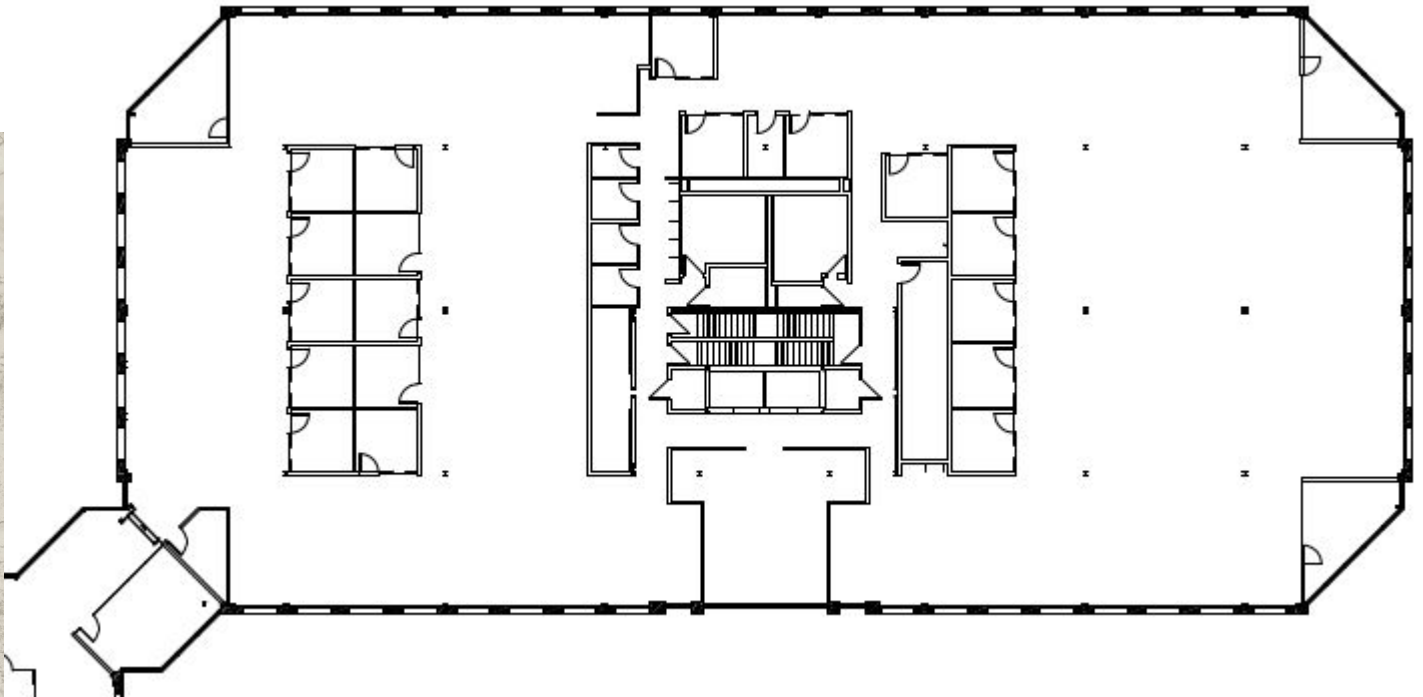
**Rates are expressed per square foot per year*

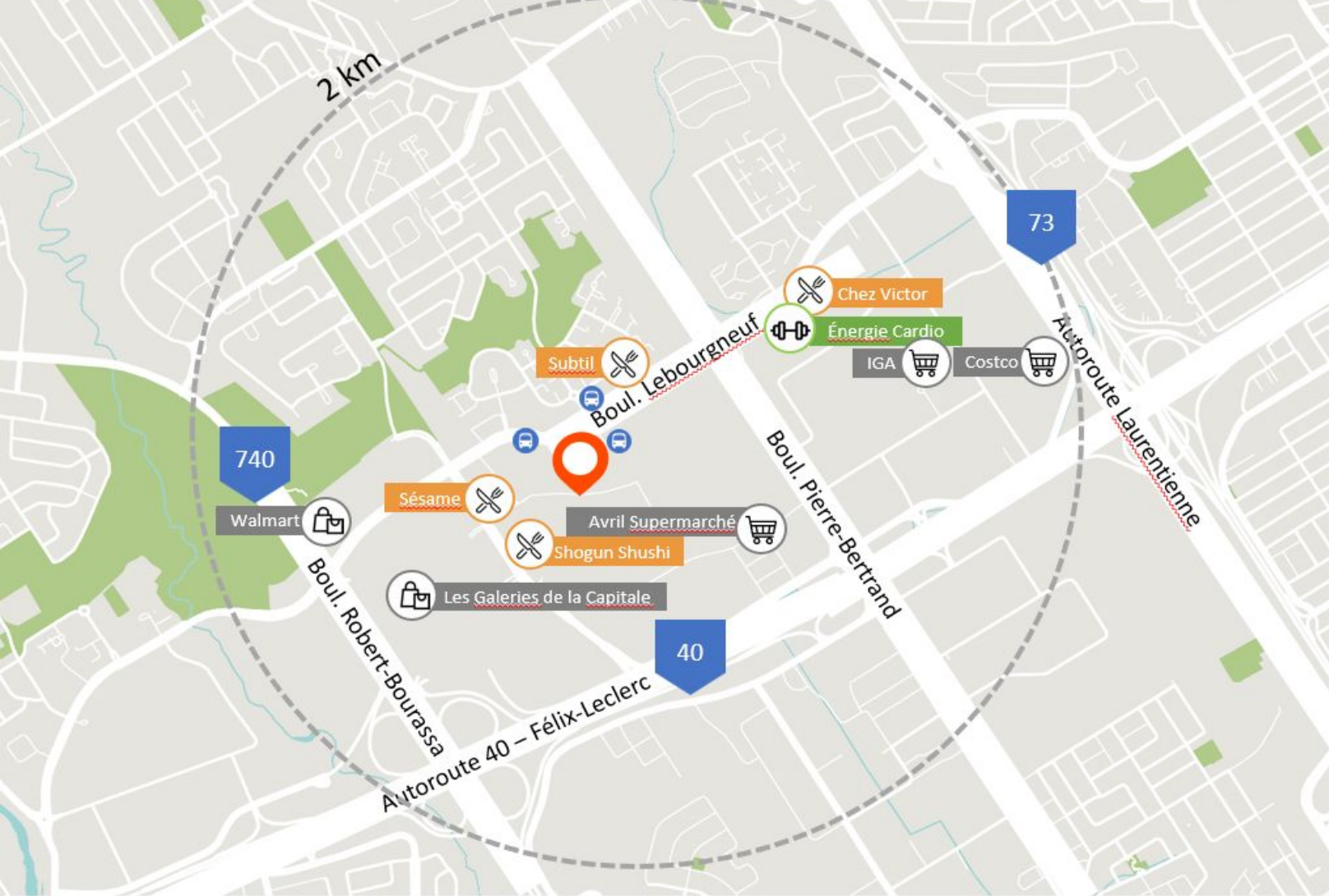
Property description

BUILDING AREA:	57,922 SF
YEAR OF CONSTRUCTION:	2017



3RD FLOOR PLAN - DIVISIBLE





EASY ACCESS TO MAJOR HIGHWAYS

- Highway 40 (Félix-Leclerc)
- Highway 73 (Laurentienne)
- Highway 740 (Robert-Bourassa)

EASY ACCESS BY PUBLIC TRANSIT


WALKING DISTANCE TO MANY RESTAURANTS AND SERVICES




< 5 minutes



AUT
40, 73, 740
< 2km



< 5 minutes



82, 185, 272, 382, 582, 803, 982

Contact



JEAN-SÉBASTIEN ROUSSY
Director of Leasing
T 418 626 4141
js@debertin.ca



MICKAEL BERNIER
Leasing Advisor
T 418 626 4141
mickael@debertin.ca

DEBERTIN IMMOBILIER
1165 Boulevard Lebourgneuf,
bureau 180, Québec
(Québec) G2K 2C9
debertin.ca