

# WAREHOUSE FOR LEASE

±25,000 - 179,638 SF AVAILABLE



5344 OVERMYER DRIVE | JACKSONVILLE, FL 32254

**LOCAL  
MARKET  
EXPERT**

**BRYAN BARTLETT, SIOR**  
Senior Vice President/Principal  
bbartlett@phoenixrealty.net  
904.399.5222



**NEWMARK**  
PHOENIX REALTY GROUP

Newmark Phoenix Realty Group  
10739 Deerwood Park Blvd. #310  
Jacksonville, FL 32256



Although all information furnished regarding property for sale, rental, or financing is from sources deemed reliable, such information has not been verified and no express representation is made nor is any to be implied as to the accuracy thereof and it is submitted subject to errors, omissions, change of price, rental or other conditions, prior sale, lease or financing, or withdrawal without notice and to any special conditions imposed by our principal.



# PROPERTY DETAILS

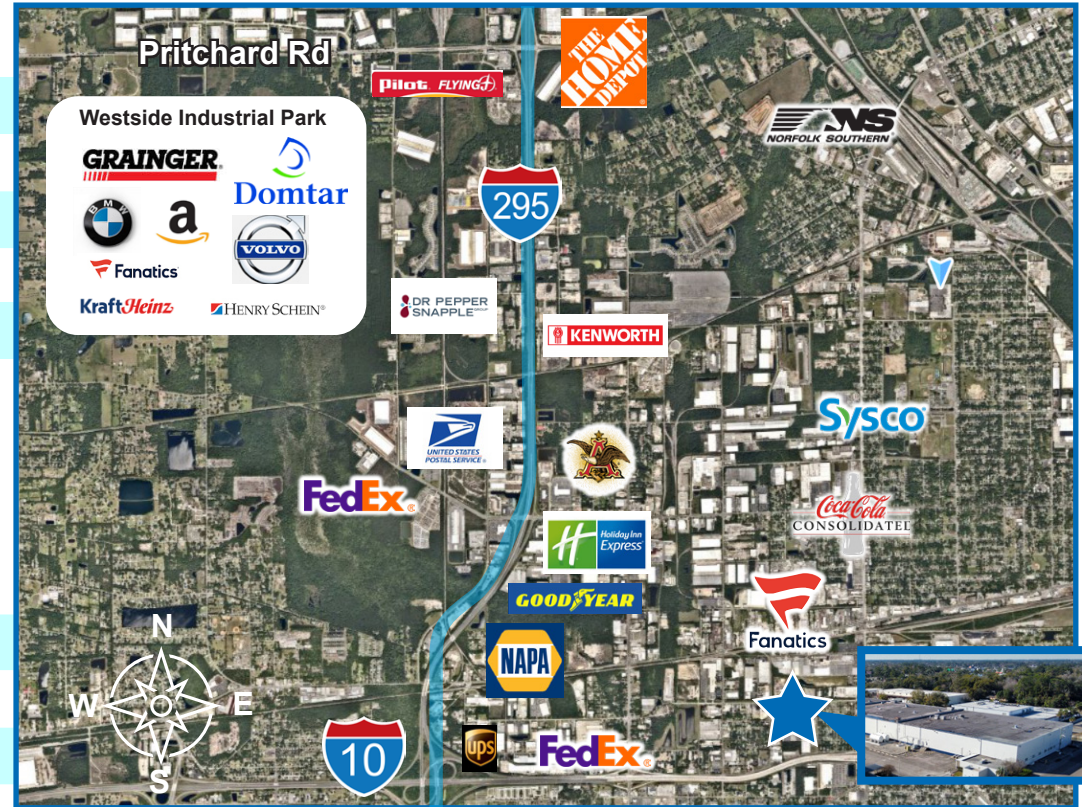
## UNIT SPECIFICS

±25,000 - 179,638 SF AVAILABLE

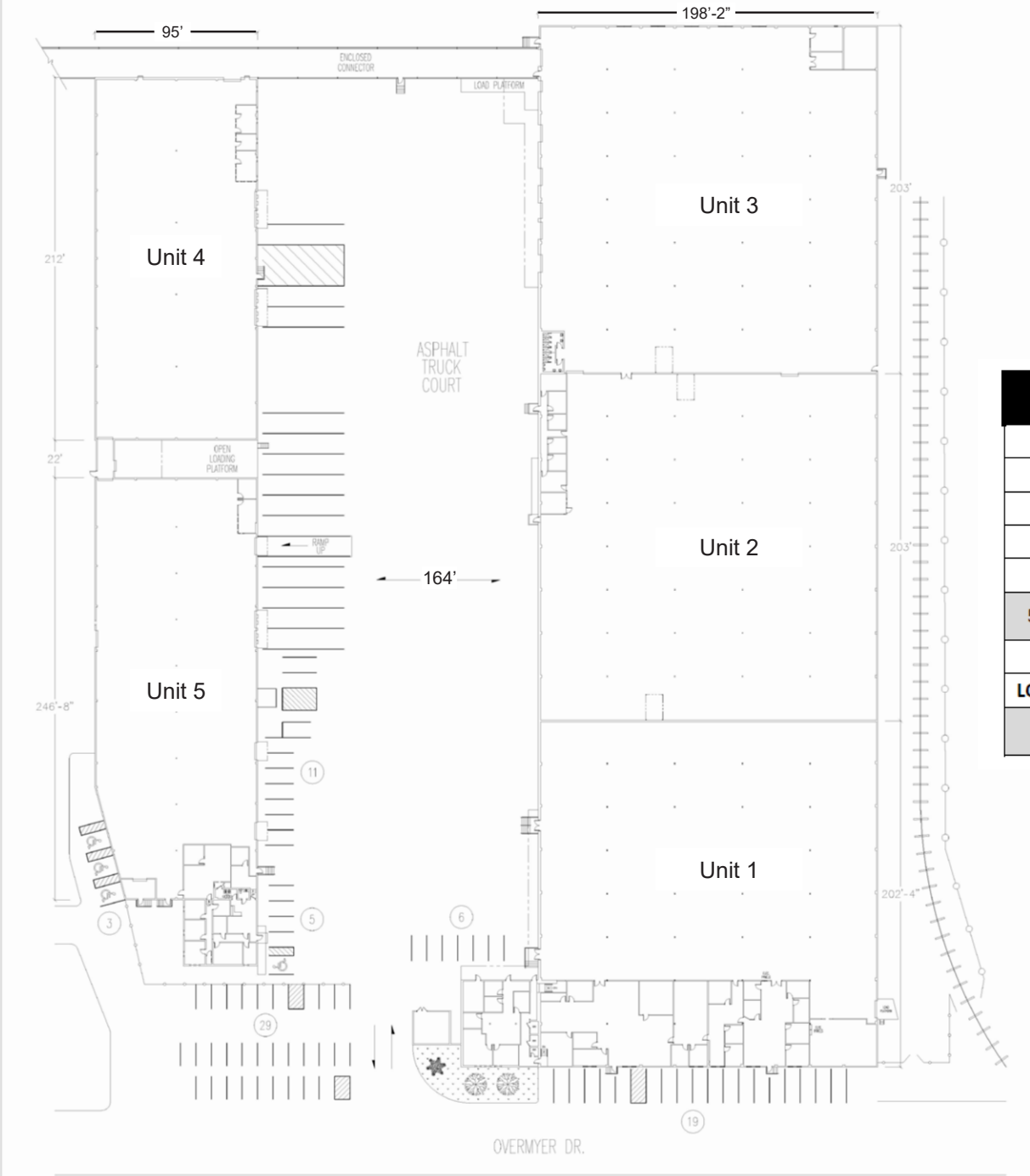
UNIT 1	42,397 SF With 10,344 SF Office
UNIT 2	40,244 SF With 1,264 SF Office
UNIT 3	40,232 SF With 300 SF Office
UNIT 4	25,000 SF With 575 SF Office
UNIT 5	25,000 SF With 3,332 SF Office

## PROPERTY SPECIFICS

BUILDING SIZE	179,638 SF
LOADING	Dock High
CLEAR HEIGHT	24'
POWER	5,000 Amps
COLUMN SPACING	25.4' x 39.6' (Unit 1, 2 & 3) 47.6' x 42' (Unit 4 & 5)
ZONING	IL (Industrial Light)
SPINKLER	Wet Pipe System
CONSTRUCTION	Concrete Tilt Wall And Precast Panel
UTILITIES	City Water And Sewer



# FLOORPLAN



UNIT #	TOTAL RENTABLE	OFFICE	WAREHOUSE
1	42,397	10,344	32,053
2	40,244	1,264	38,980
3	40,232	300	39,932
4	25,000	575	19,560
5	25,000	3,332	21,109
5 UNIT TOTAL:	172,873	15,815	151,634
CONNECTOR	4,691		
LOAD PLATFORM	2,074		
GROSS TOTAL	179,638		



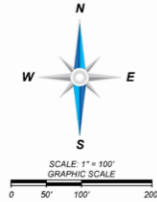
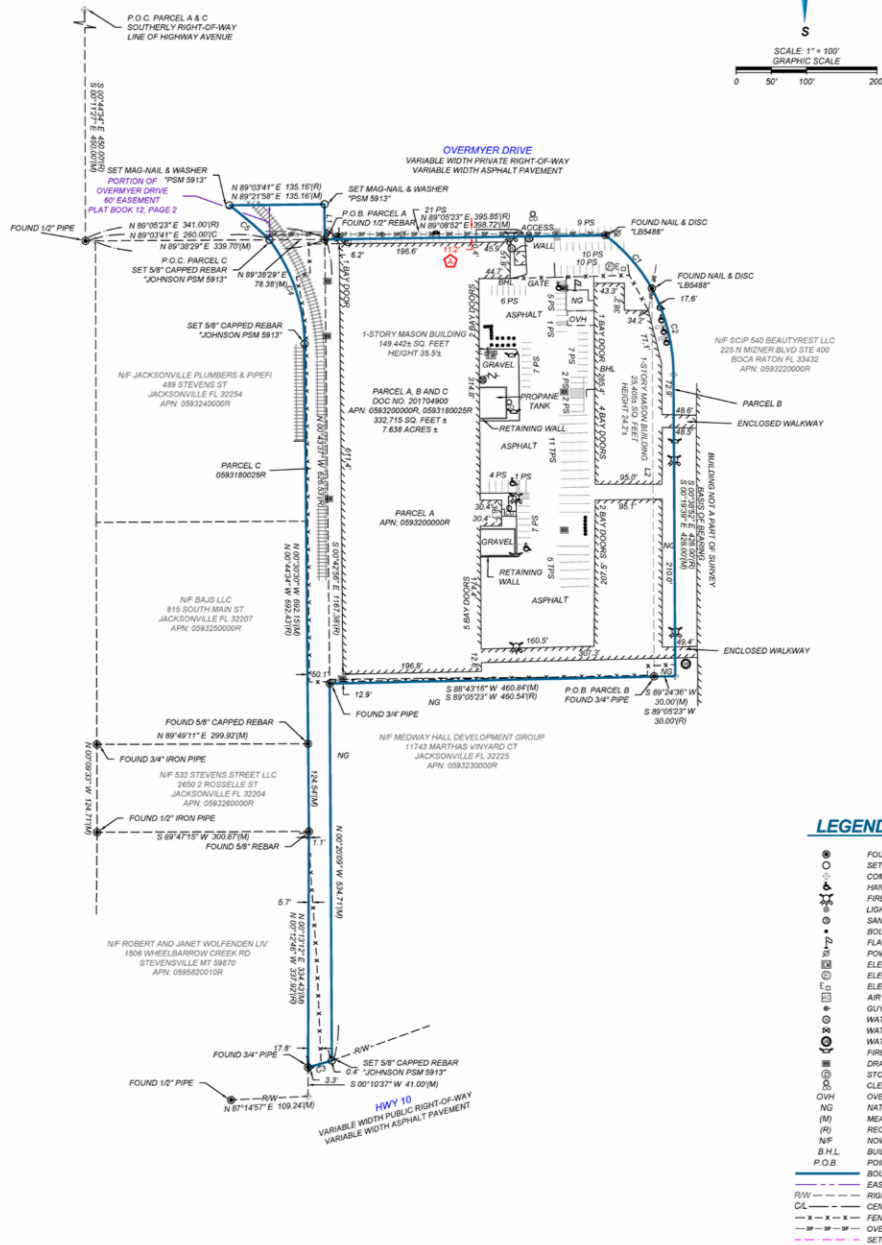
# SURVEY

## ALTA/NSPS LAND TITLE SURVEY

5344 OVERMYER DRIVE, JACKSONVILLE,

DUVAL COUNTY, FLORIDA 32254

LOCATED IN: SECTION 19, TOWNSHIP 2 SOUTH, RANGE 26 EAST





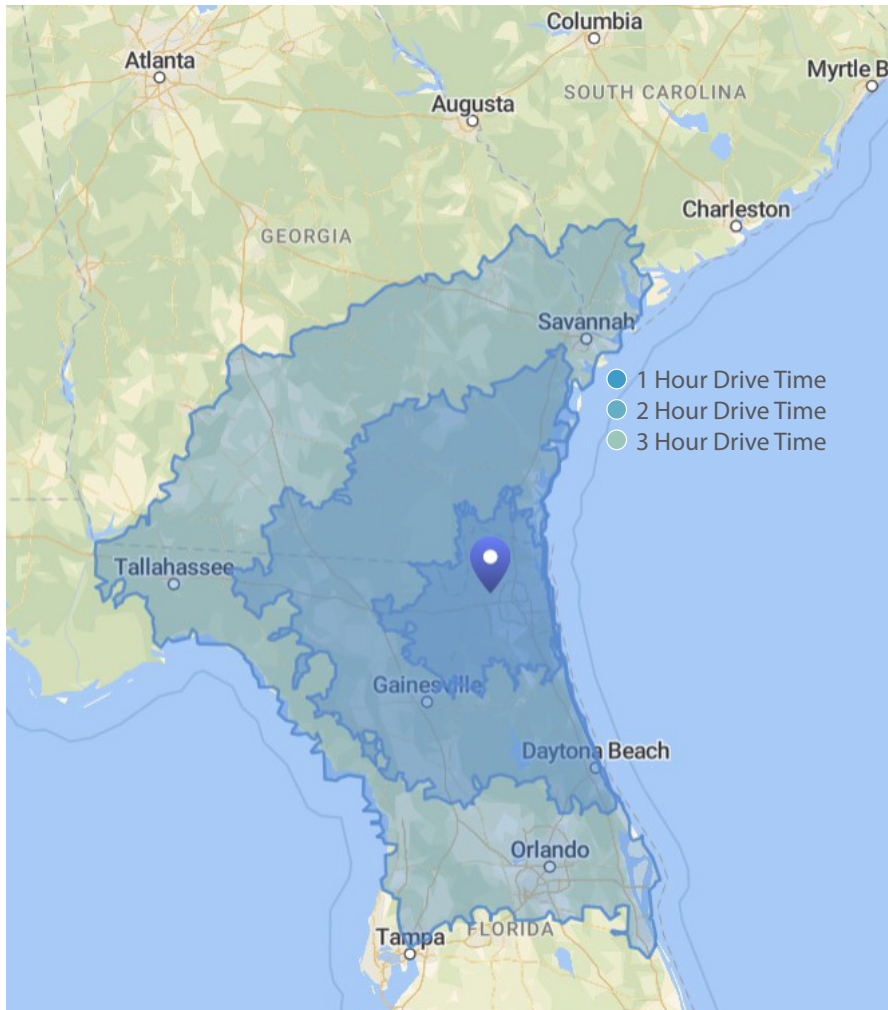
# UNIT AERIAL



<b>UNIT 1</b>	<i>42,397 SF With 10,344 SF Office; Dock High Doors Built To Suit</i>
<b>UNIT 2</b>	<i>40,244 SF With 1,264 SF Office; Dock High Doors Built To Suit</i>
<b>UNIT 3</b>	<i>40,232 SF With 300 SF Office; 6 Dock High</i>
<b>UNIT 4</b>	<i>25,000 SF With 575 SF Office; 4 Dock High</i>
<b>UNIT 5</b>	<i>25,000 SF With 3,332 SF Office; 4 Dock High With 1 Ramp</i>



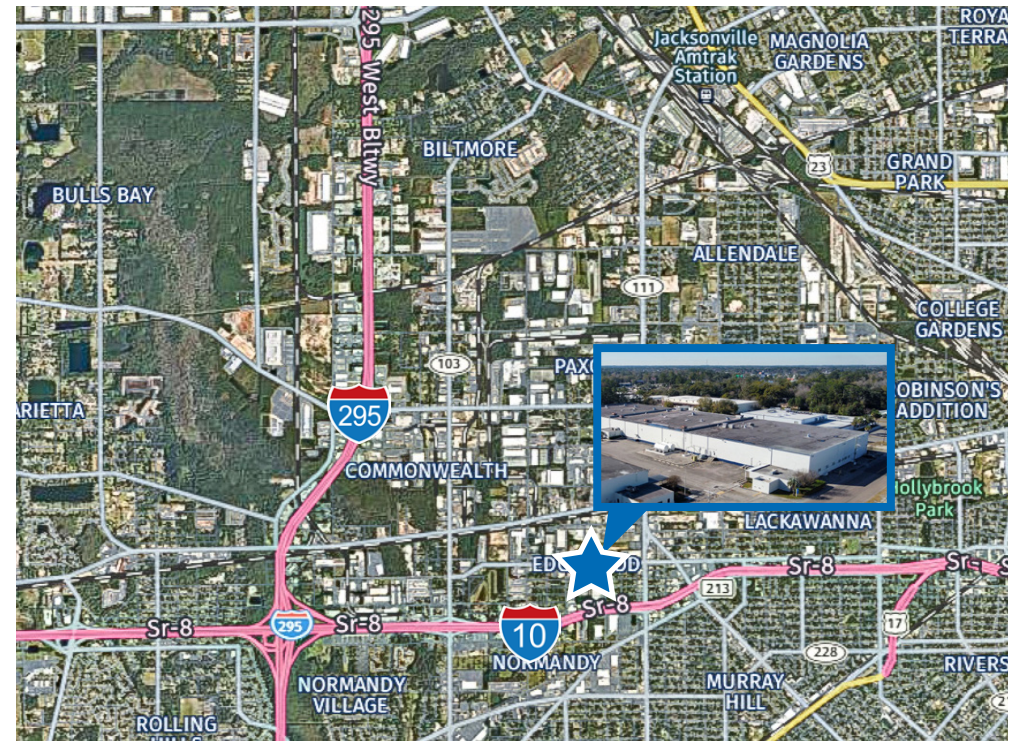
# EXCELLENT CONNECTIVITY



Point of Interest	Time	Miles
<b>I-95</b>	7 min	3.6
<b>I-10</b>	3 min	0.5
<b>I-295</b>	6 min	2.3
<b>Jax International Airport</b>	22 min	17.8
<b>JaxPort</b>	16 min	9.1
<b>CSX Intermodal Facility</b>	15 min	6.4
<b>Norfolk Southern Intermodal Facility</b>	17 min	6.6

5344 Overmyer Drive is proximate to the region's major transportation infrastructure, providing direct access and serviceability to the greater Jacksonville metro and neighboring regions.

## LOCATION MAP



- ✓ **Premier Jacksonville industrial location for regional and local distribution**
- ✓ **Strategically located with easy access to Interstates 10, 95 & 295**
- ✓ **Close proximity to extensive food industry presence in the high growth North Florida Region**
- ✓ **Excellent Access to UPS/Fedex**
- ✓ **Strong Local Labor Base**



# WHY JACKSONVILLE

## Overview

- Jacksonville's strategic location in the Southeast, coupled with its deep-water port makes it an attractive option for businesses that want to serve larger regional and international markets.
- Jacksonville is the largest metro area by land mass in the U.S.
- The region's strong military presence, together with its affordable cost of living and high quality of life, attracts a young and talented workforce.



## Job and Economy Overview

- Jacksonville MSA employment increased approximately 1.3% year-over-year in 2025, reflecting continued but moderating job growth.
- The Jacksonville area unemployment rate averaged approximately 4.5% in late 2025, up from historically low levels in 2023–2024, reflecting broader national labor market normalization.
- In 2025, the education and health services sector added the most jobs, followed by professional and business services and leisure and hospitality, while some administrative and financial sectors experienced modest declines.

## Population Overview

- Jacksonville's population growth continues to be driven by millennial workforce migration and retirement-age residents, attracted by quality of life, affordability, and access to employment opportunities.
- The Jacksonville MSA population is estimated at approximately 1.75–1.8 million residents in 2025 and is projected to exceed 1.8 million by 2030, representing sustained long-term growth

\*information via <https://www.floridajobs.org>





# FLORIDA'S ECONOMIC SUCCESS

## ***Florida's Workforce Supplies Business Talent***

A diverse market alongside strong training and education facilities creates one of the nation's most attractive workforces for businesses in Florida.

Florida's talent pipeline is consistently ranked among the best in the nation. Much credit for the excellent skills of the Florida workforce can be given to the state's educational institutions and unique workforce training programs. Florida is home to the nation's 3rd largest workforce, totaling more than 11.5 million. The state's 12 public universities, 6 major medical schools and numerous private colleges and universities work closely with the business community to build programs that reflect the needs of Florida's industries.

## ***Florida's Business Advantages***

From a pro-business climate to top infrastructure and a skilled workforce, it's no wonder why companies expand in Florida.

Florida can propel your company's growth in today's competitive global market. Florida stands ready to welcome companies with the talented workforce, top-ranked infrastructure, global connectivity and quality of life your company needs. These are just a few reasons why global players, established companies and blossoming startups have chosen to expand in Florida. Explore more of Florida's business advantages below.

## ***Pro-Business Climate***

Florida's huge market and pro-business climate help companies reach growth and expansion goals with ease. Florida consistently ranks among the best states for business, thanks to its pro-business state tax policies, competitive cost of doing business and streamlined regulatory environment. Government and economic development leaders work together to ensure that the state's business climate remains favorable to companies of all sizes, including some of the nation's leading corporations.

Beyond that, Florida offers a cost-efficient alternative to high-tech states with more affordable land, labor and capital than its competitors. The state's regulatory agencies and local governments provide quicker, less costly and more predictable permitting processes for significant economic development projects without reducing environmental standards. Florida's zero percent personal income tax also makes it easier for you to build the business of your dreams. More money in your pocket today means more flexibility to spend on your business and your future.

## ***Success Today Requires Global Access***

From moving people to moving data, Florida has built what it takes to be an economic powerhouse. Florida has been named the No. 1 state for higher education by U.S. News & World Report for six consecutive years.

Florida's transportation infrastructure is one of the world's most extensive multi-modal systems, featuring international airports, deep-water seaports, extensive highway and rail networks and multiple hubs that allow for high-speed data transmission from around the U.S. to Europe, Latin America and Africa.

Florida is connected to the world in every possible way. From strong cultural and trade connections with Latin America to unmatched global reach via its modern ports and airports and its leadership in the commercial space industry, Florida is a true global hub for business.

The state is also recognized as one of the top five telecom hubs in the world. The Network Access Point (NAP) in Miami serves as a major switching station for Internet traffic coming to and from Latin America, while other high-speed networks, such as the Florida LambdaRail and LA Grid, facilitate R&D efforts.

\*information via <https://www.enterpriseflorida.com>

\*information via <https://www.enterpriseflorida.com>



# JAXPORT

Positioned in the Southeastern United States at a key intersection of national rail and highway systems, the Jacksonville Port Authority (JAXPORT) serves as a major international gateway to Florida—the third most populous state in the U.S. It stands as the state’s leading container port and ranks among the top vehicle-handling ports in the country.

Numerous ocean carriers operate through JAXPORT, providing efficient access to over 140 ports across more than 70 nations. Shippers benefit from streamlined connections through a network of approximately 100 trucking companies and daily rail service from Class I railroads CSX and Norfolk Southern, along with the regional Florida East Coast Railway.

