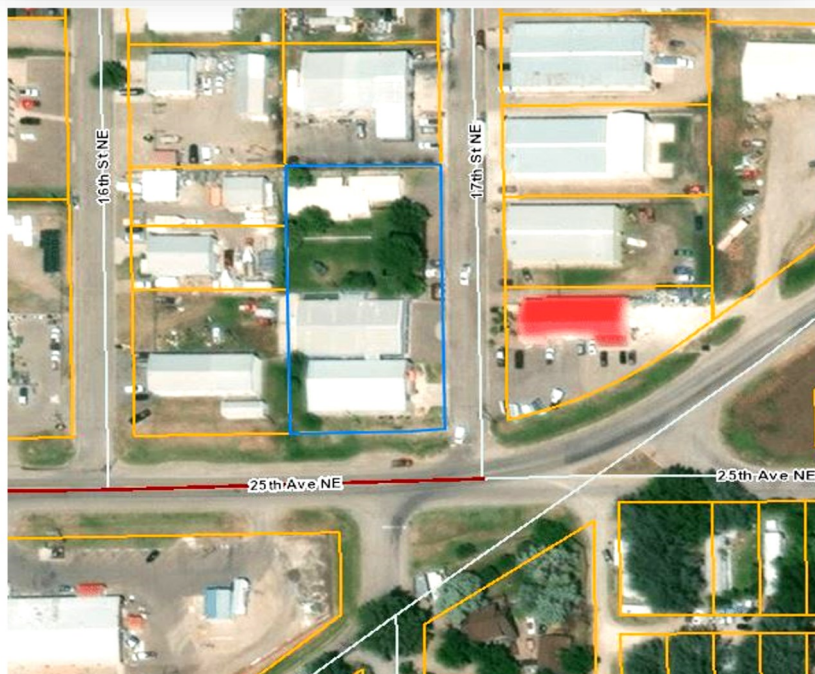


## Warehouse for LEASE

2500 17th St. NE  
Black Eagle, MT 59414

**\$3,500/Month NNN**

Approx. 5,825 SF of Interior Space  
Zoned County Industrial 1



### FEATURES

- Built in 2004
- Approx. 5,825 SF of interior space
- Dedicated office space and reception area
- 8-16' wall height
- Tenant is responsible for utilities, property taxes and insurance
- Approx. 1.007 acre shared lot

**FOR MORE INFORMATION**

**RYAN PACHEK**

COMMERCIAL REAL ESTATE SPECIALIST

(406) 899-6651

ryan@catalyst-cre.com

[www.catalyst-cre.com](http://www.catalyst-cre.com)



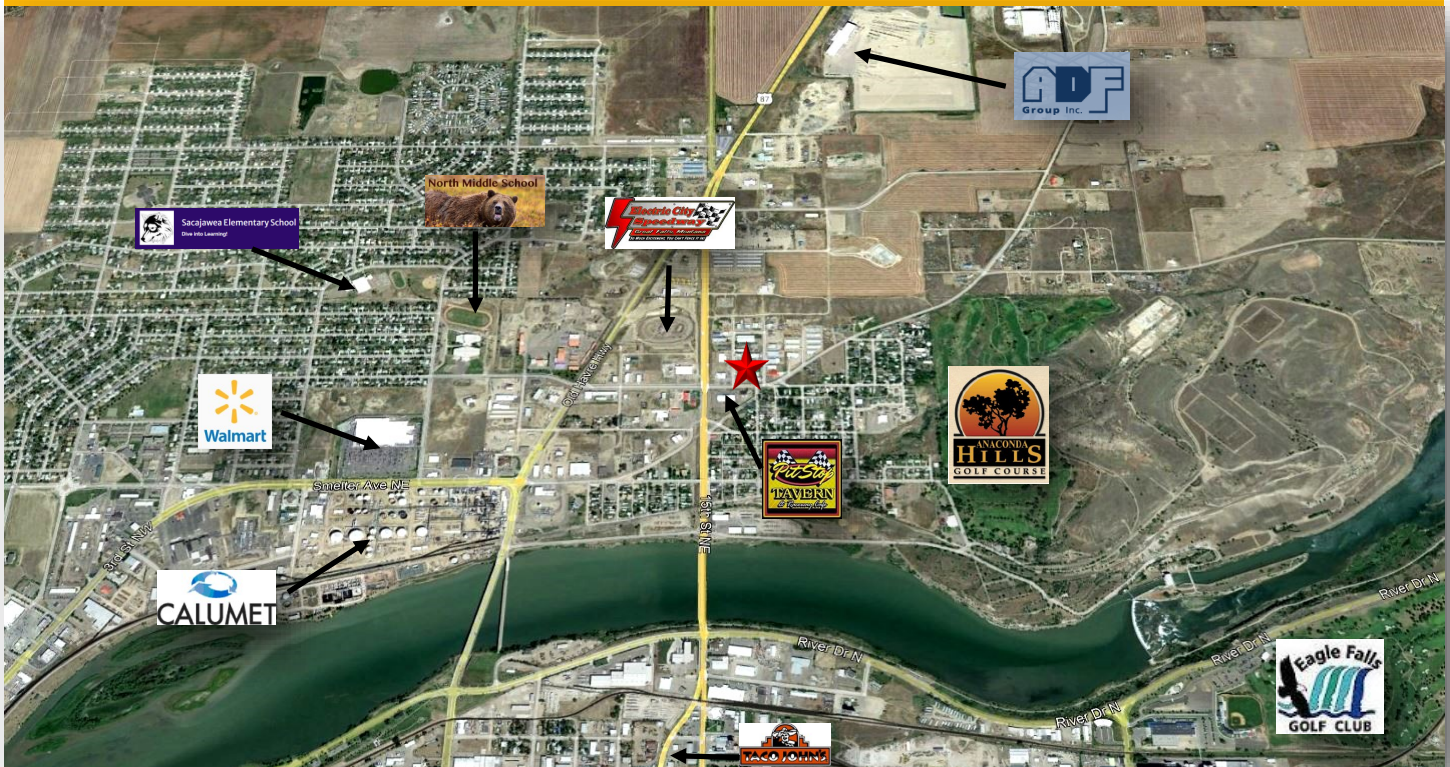


## Warehouse for LEASE

2500 17th St. NE  
Black Eagle, MT 59414

**\$3,500/Month NNN**

Approx. 5,825 SF of Interior Space  
Zoned County Industrial 1



FOR MORE INFORMATION

[www.catalyst-cre.com](http://www.catalyst-cre.com)

**RYAN PACHEK**

COMMERCIAL REAL ESTATE SPECIALIST

(406) 899-6651

[ryan@catalyst-cre.com](mailto:ryan@catalyst-cre.com)

