

FOR LEASE

±2,520 SF



7898 Cherry Ave Unit D
FONTANA, CA 92336

LOCATION MAP

PROPERTY FEATURES:

- ±2,520 SF of 100% Climate Controlled Space
- Ten (10) Ton & Three (3) Ton HVAC Units
- ±800 SF Warehouse
- Reception, Private Office, Lab space / Large Office, 2 Restrooms
- 18' Clear Height
- 200 Amps 277/480v (Verify)
- One (1) Grade Level Door 12' x 14



FOR MORE INFORMATION, PLEASE CONTACT:

JIM RIDENS

Senior Vice President
(909) 373-2718 | DRE #00974728
jridens@lee-assoc.com

NEIL RIDENS

Associate
(909) 373-2717 | DRE 02106181
nridens@lee-assoc.com



LEE & ASSOCIATES
ONTARIO

FOR LEASE

±2,520 SF



FOR MORE INFORMATION, PLEASE CONTACT:

JIM RIDENS

Semior Vice President

(909) 373-2718 | DRE #00974728

jridens@lee-assoc.com

NEIL RIDENS

Associate

(909) 373-2717 | DRE 02106181

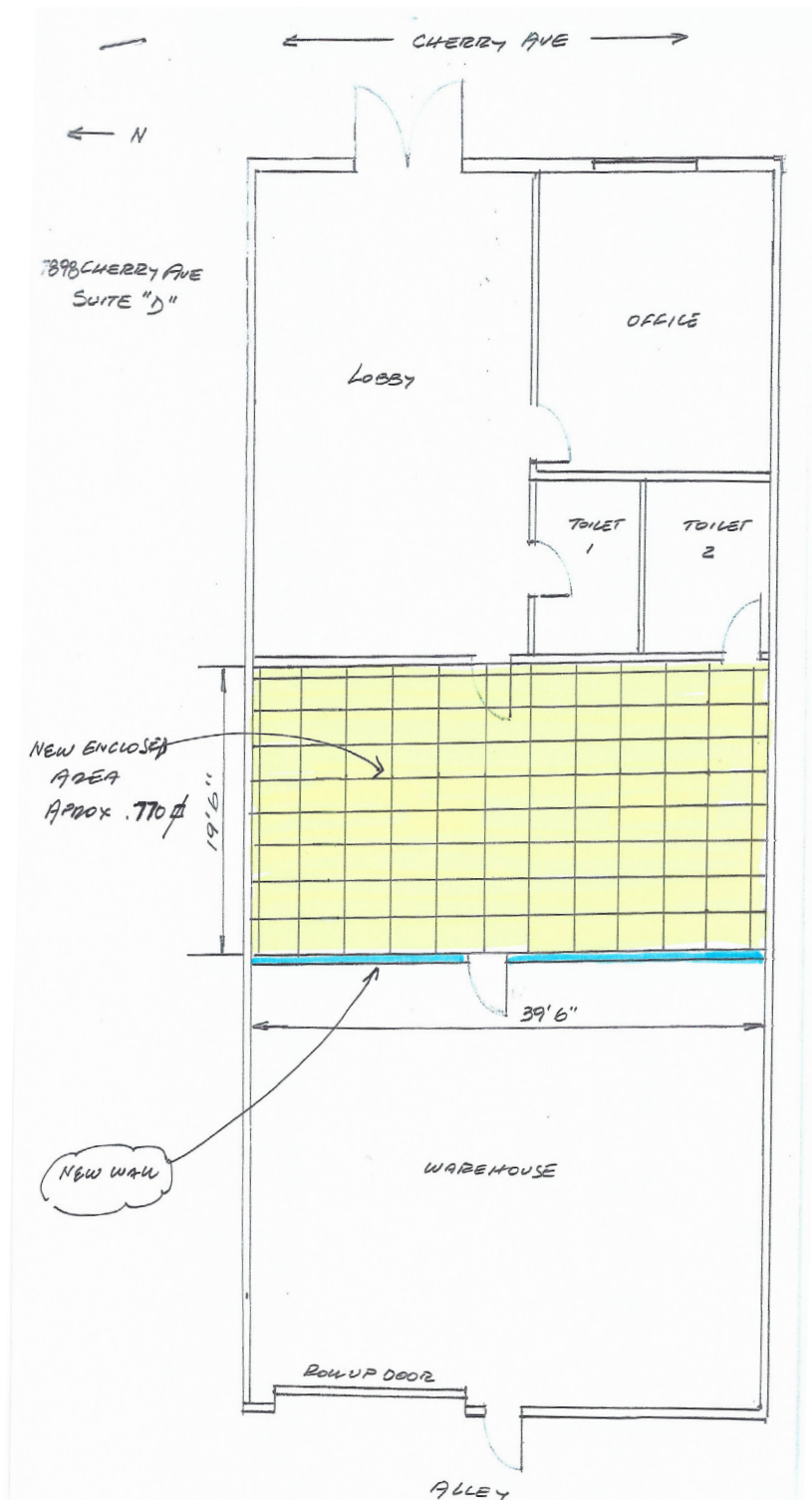
nridens@lee-assoc.com



LEE & ASSOCIATES
ONTARIO

FOR LEASE

±2,520 SF



FOR MORE INFORMATION, PLEASE CONTACT:

JIM RIDENS

Senior Vice President

(909) 373-2718 | DRE #00974728

jridens@lee-assoc.com

NEIL RIDENS

Associate

(909) 373-2717 | DRE 02106181

nridens@lee-assoc.com



LEE & ASSOCIATES
ONTARIO