



Grandover Parkway

4990-5003 Grandover Parkway, Greensboro, North Carolina

SITES AVAILABLE

**From 13.67
to 32.88
Acres**

**Leasing
Contacts:**

Gene Tillman

Mobile: (336) 706-6760
gtillman@kourycorp.com

or

Travis Carter, CCIM

Mobile: (336) 255-4693
tcarter@kourycorp.com

**KOURY
CORPORATION
BUILDER & DEVELOPER**

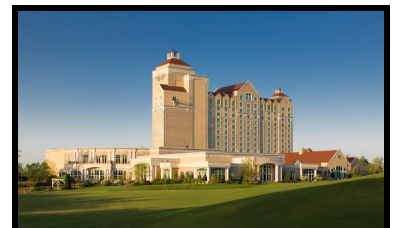
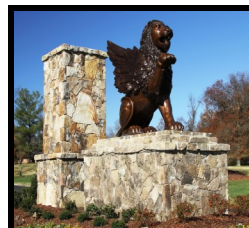
336-299-9200

www.kourycorp.com



Utilities on Site & Balanaceable Topography

- Grandover Parkway offers large sites capable of housing up to 300,000 square foot class “A” office buildings with views of the 2nd and 17th holes of the Grandover West golf course.
- Situated in Grandover Corporate Park just west of the Grandover Resort and Conference Center.
- Strategically positioned for accessibility and convenience, Grandover Corporate Park is directly off Interstate 85 and one exit from Interstates 73 and 840 (Greensboro Urban Loop) which provides direct access to Interstate 40 and the Piedmont Triad International Airport.
- Also available is a highly visible 13.67 acre site at the intersection of Interstates 85 and Business 85.





Grandover Parkway
Development Sites



13.67 ACRES

SITE 3

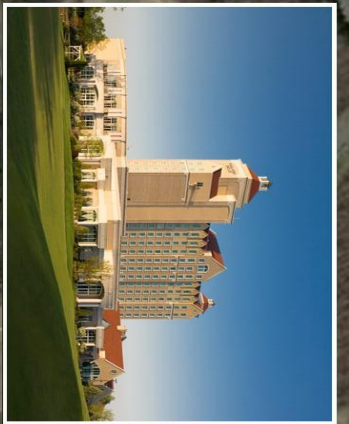
32.88 ACRES

SITE 2

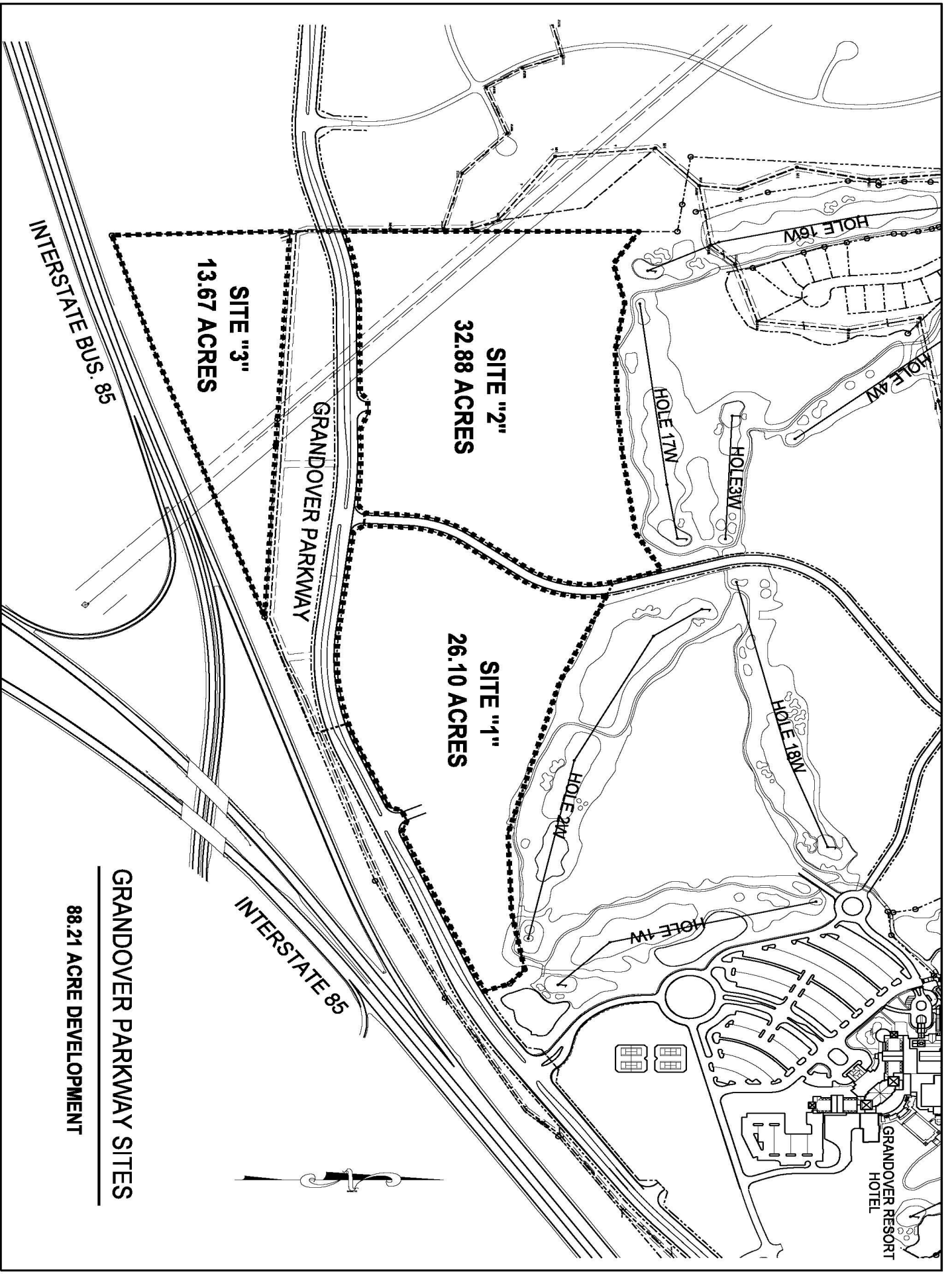
26.10 ACRES

SITE 1

Grandover Parkway



KOURY
CORPORATION
BUILDER & DEVELOPER



SITE "3"
13.67 ACRES

SITE "2"
32.88 ACRES

SITE "1"
26.10 ACRES

INTERSTATE BUS. 85

GRANDOVER PARKWAY

INTERSTATE 85

**GRANDOVER RESORT
HOTEL**

GRANDOVER PARKWAY SITES

88.21 ACRE DEVELOPMENT