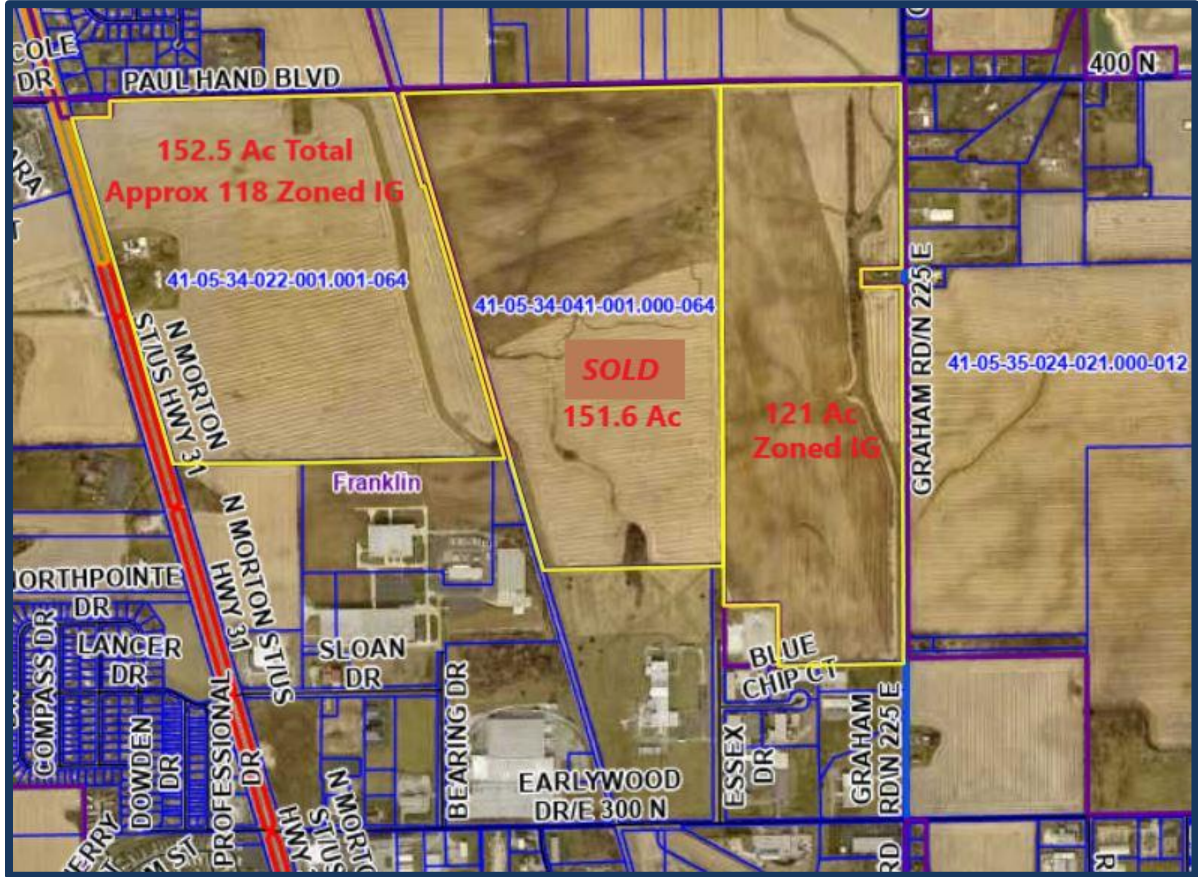


**RARE OPPORTUNITY**  
**DEVELOPMENT LAND • ZONED INDUSTRIAL GENERAL**  
City of Franklin Johnson County, Indiana

Asking Price 118 Ac is \$70,000/Ac

Asking Price 121 Ac is \$90,000/Ac

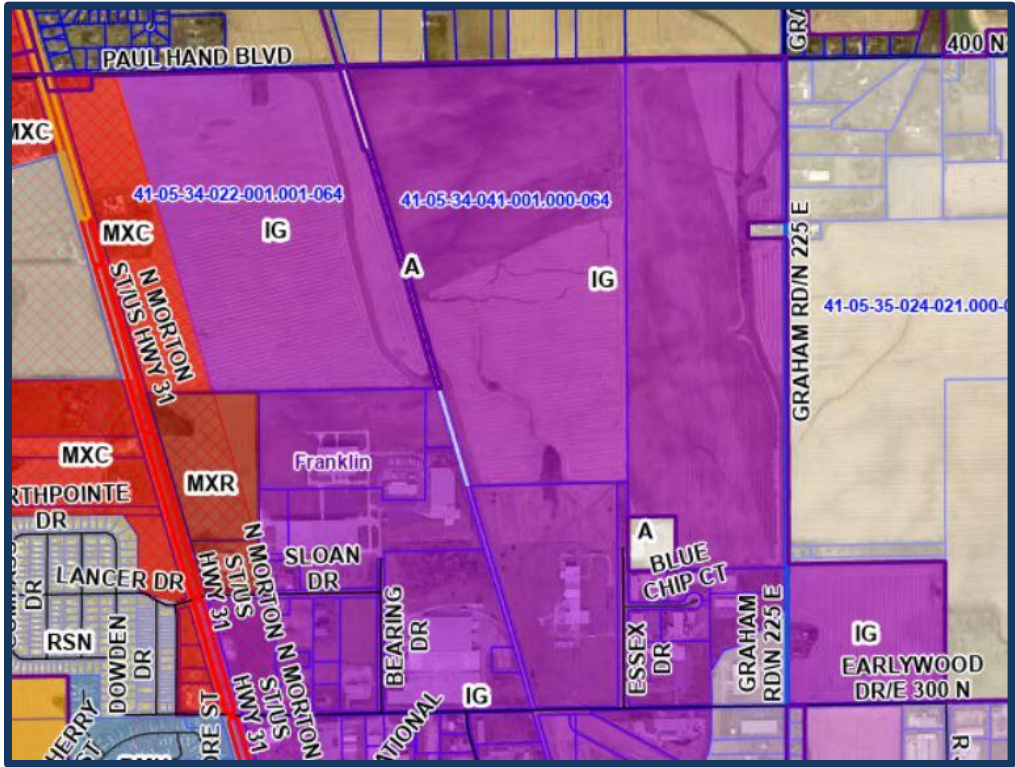


Franklin Economic Development Area  
Excellent Location on US Hwy 31  
Level Topography

Annexed, Zoned Industrial  
2 Miles to I-65 Interchange  
Utilities Available



Jackie Tinnerman Briggs • Managing Broker • ICBR Certified  
317-332-5762 JTinnermanBriggs@GMail.com

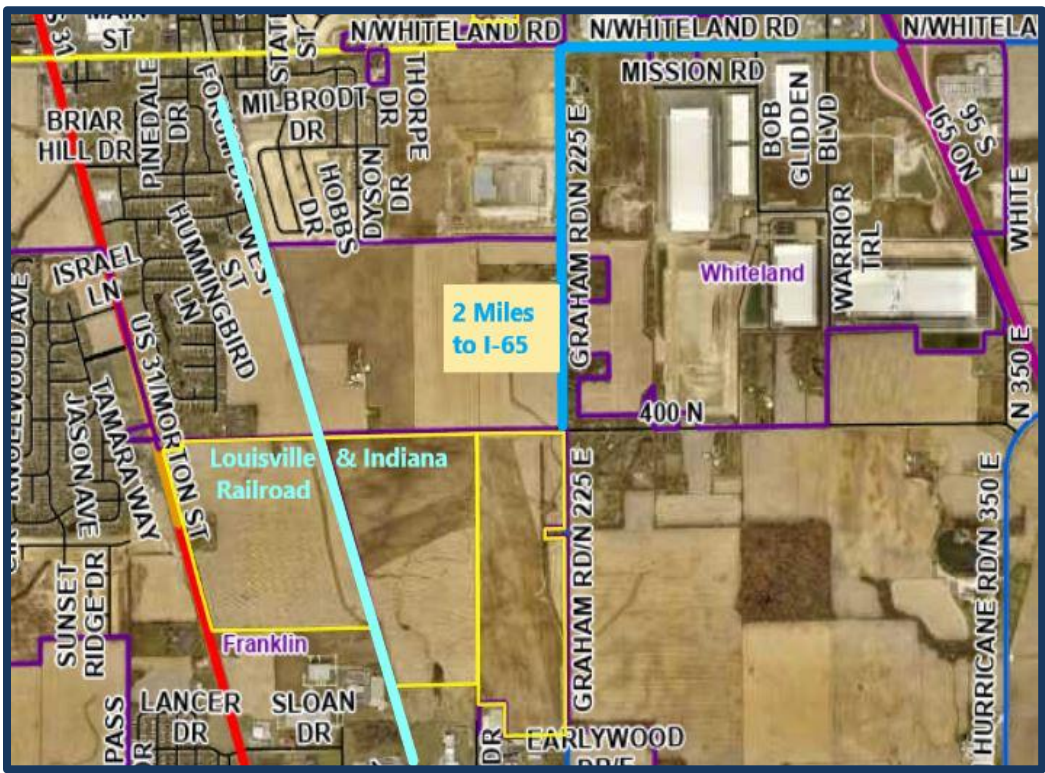


**Industrial General “IG”**

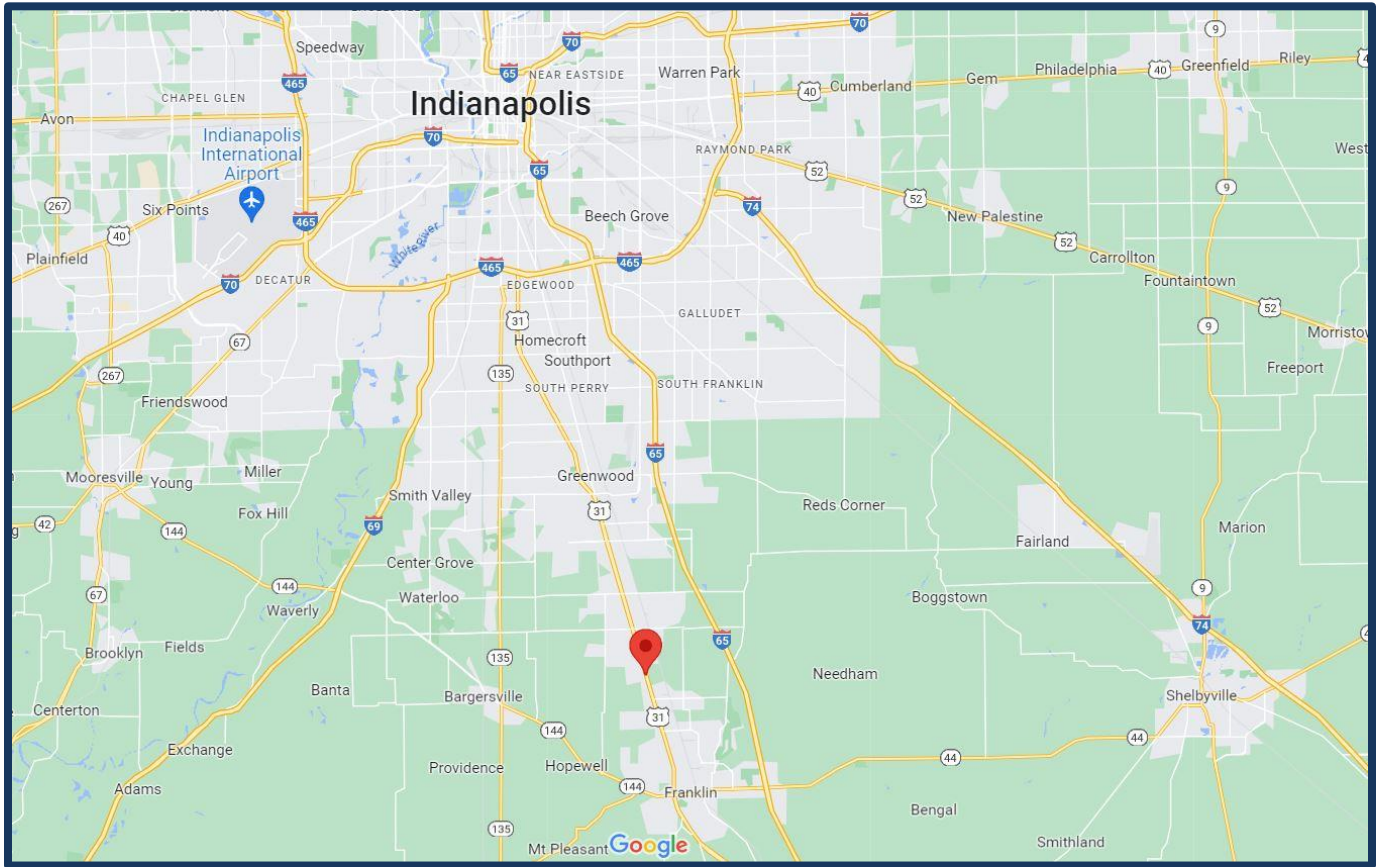
general industrial manufacturing production, assembly, warehousing, R & D facilities and similar.

Examples:

- Agricultural products terminal
- Food & Beverage production
- General industrial production
- Light Industrial assembly & distribution
- Light Industrial processing and distribution
- Warehouse & Distribution facility



Jackie Tinnerman Briggs • Managing Broker • ICBR Certified  
 317-332-5762 JTinnermanBriggs@GMail.com



South Indy Greenwood Airport: 20 minutes  
 Indianapolis International Airport: 40 minutes  
 Downtown Indianapolis: 40 minutes

Generous housing variety for workforce available in nearby Franklin, Greenwood, Center Grove, Bargersville, Shelbyville and Indianapolis Southside

	<u>3 Miles</u>	<u>5 Miles</u>
Population	20,381	49,473
Housing Units	8,527	18,994

All information furnished regarding property for sale, rental or financing is from sources deemed reliable, but no warranty or representation is made to the accuracy thereof and same is submitted to errors, omissions, change of price, rental or other conditions prior to sale, lease or financing or withdrawal without notice. No liability of any kind is to be imposed on the broker herein.

Jackie Tinnerman Briggs • Managing Broker • ICBR Certified  
 317-332-5762 JTinnermanBriggs@GMail.com