

255 E Lake Street  
Bloomington, Illinois



Office Space  
Available!



Christine Simek  
+1 630.473.5070  
[christine@xroadsadvisors.com](mailto:christine@xroadsadvisors.com)

# Introduction



Free-standing office building totaling 31,146 rentable square feet on 75,254 square feet of land. Excellent location in the suburbs and away from the city life. Located on the North Side of Lake Street, just west of I-355 with traffic light access (East/West).

# Building Features



- Available Suite:
  - Suite 107: 1,304 SF
- Recently renovated interior
- 3.5 / 1,000 SF parking ratio
- Monument signage
- Professionally managed and maintained building and grounds
- Upgraded lighting with LED panels. Smart technology allows you to control from your phone making it very efficient

High visibility  
40,000 VPD

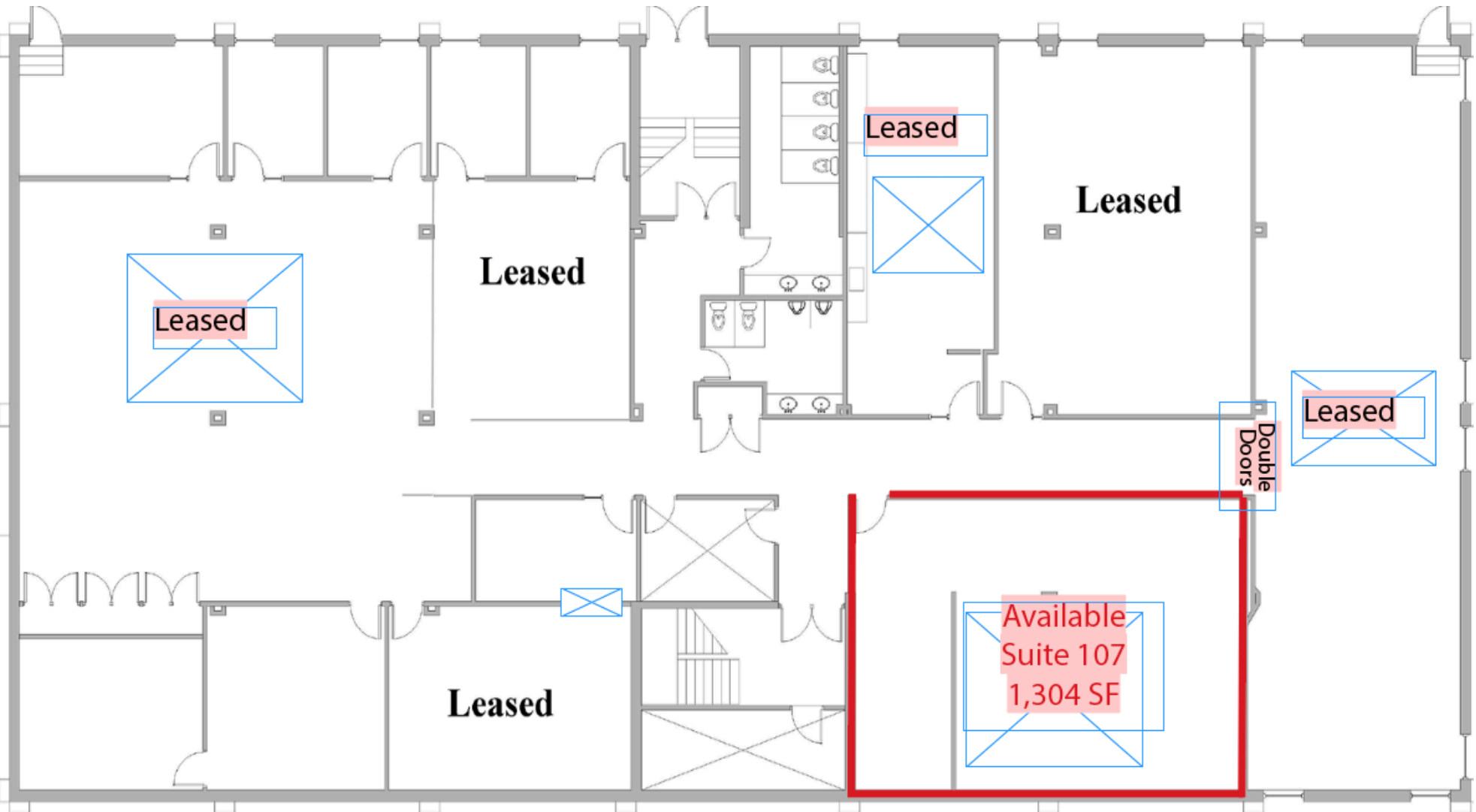
# Exterior Photos



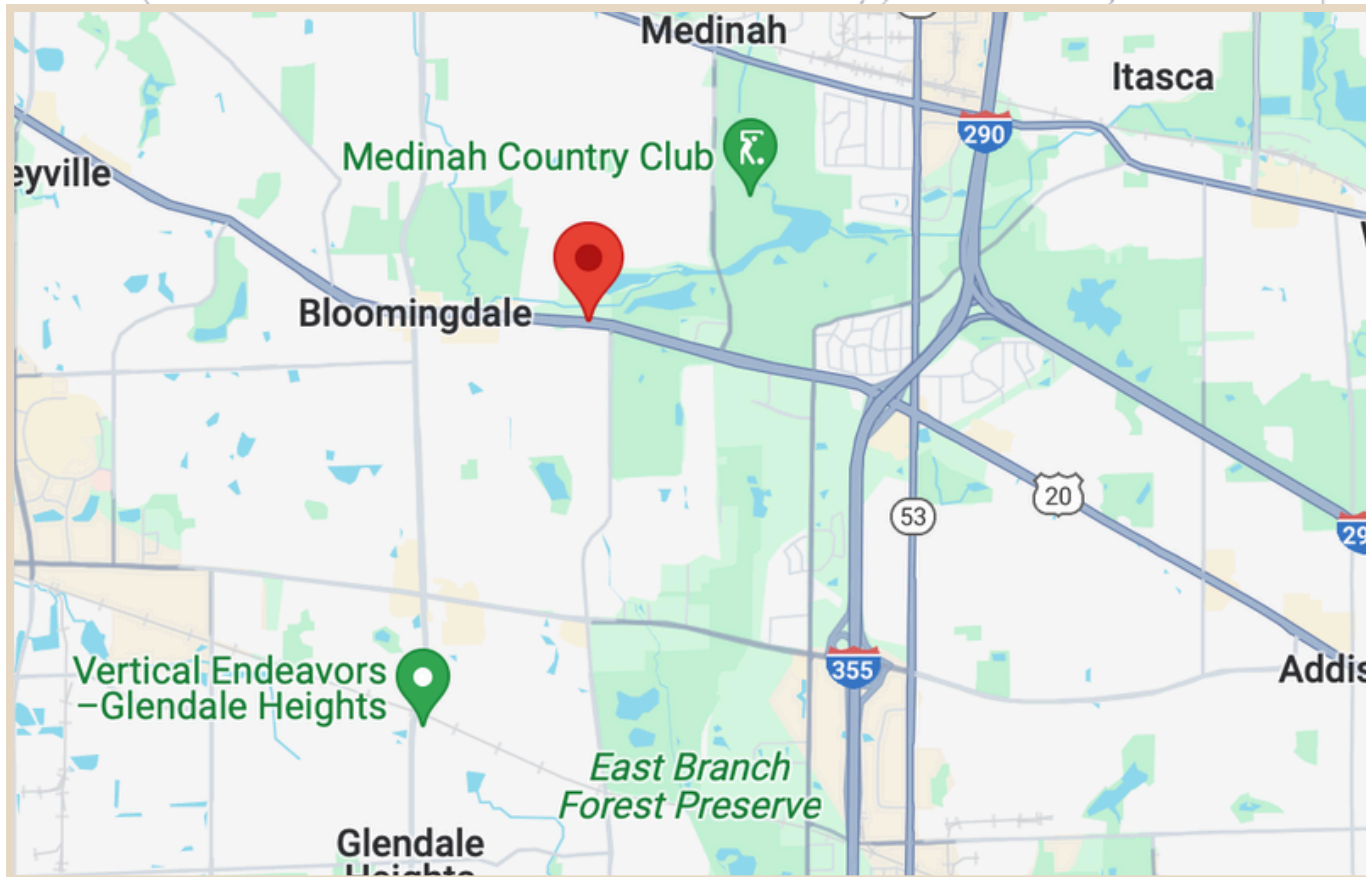
# Interior Photos: Suite 107



# Floor Plan - Suite 107 - 1,304 SF



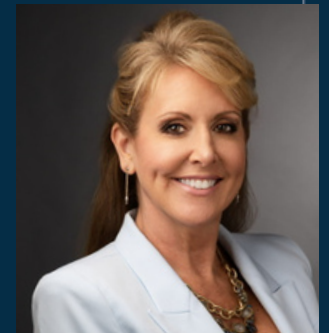
# Location



Located on the  
North side  
of Lake Street  
west of I-355



255 E Lake Street  
Bloomington, Illinois



Christine Simek  
+1 630.473.5070  
[christine@xroadsadvisors.com](mailto:christine@xroadsadvisors.com)