

Property Summary



DAILY TRAFFIC CONDITIONS

| TRAFFIC COUNT | DAILY TRAFFIC |
|---------------|---------------|
| COUNT | 41,679 |
| STREET | W. Hunt Hwy. |
| COUNT 2 | 19,419 |
| STREET 2 | N. Gary Rd. |

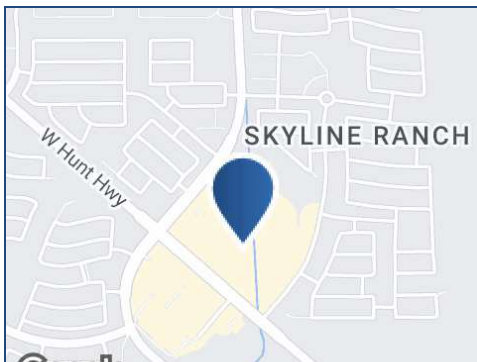
DEMOGRAPHICS - 2024

| DEMOGRAPHICS | 1 MILE | 3 MILE | 5 MILE |
|----------------------|-----------|-----------|-----------|
| Estimated Population | 10,841 | 62,071 | 117,243 |
| Average HH Income | \$103,579 | \$111,258 | \$120,196 |
| Estimated Households | 3,381 | 20,455 | 37,602 |

PROPERTY HIGHLIGHTS

- Multiple outparcels located in front of The Home Depot
- Signage rights included
- Nearby retailers include: The Home Depot, Walmart, WinCo Foods (coming soon), Goodwill, Discount Tire, Big O Tires, Sally Beauty, Sport Clips, and Super Star Car Wash
- Nearby restaurants include: Jimmy John's, Panda Express, Denny's, Salad and Go, Freddy's Frozen Custard & Steakburgers, Burger King, Firehouse Subs, Dunkin', Taco Bell, and Hungry Howie's

* Figures shown represent estimates



KEN STEPHENS

813.349.8418

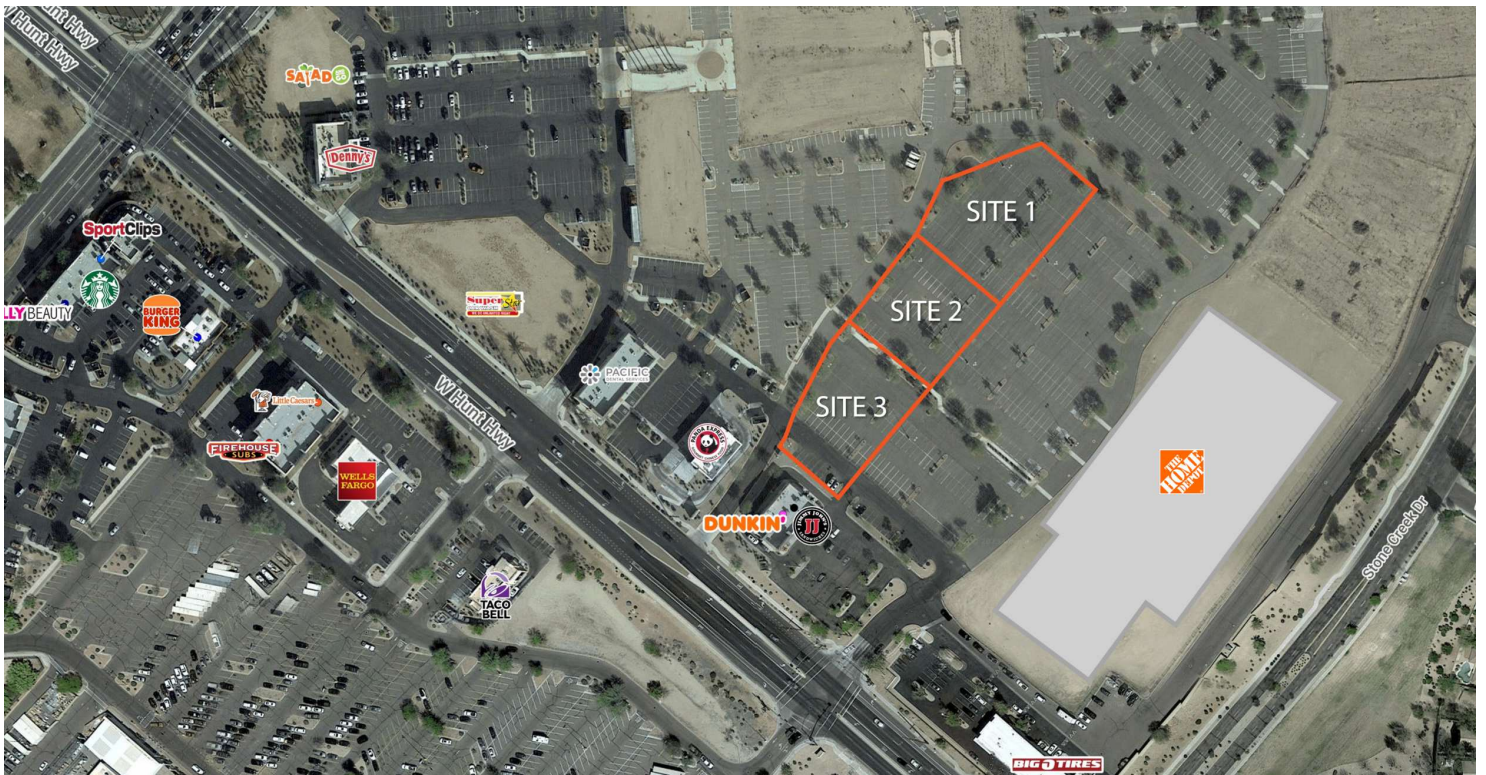
kstephens@retail-pa.com

DAVE LEYVAS

602.625.9700

dleyvas@DCB-DRS.com

Location Map



KEN STEPHENS

813.349.8418

kstephens@retail-pa.com

DAVE LEYVAS

602.625.9700

dleyvas@DCB-DRS.com

Retail Property Advisors // 813.530.2770 // 611 W. Bay St. // Suite 2H, Tampa, FL 33606 // Retail-PA.com

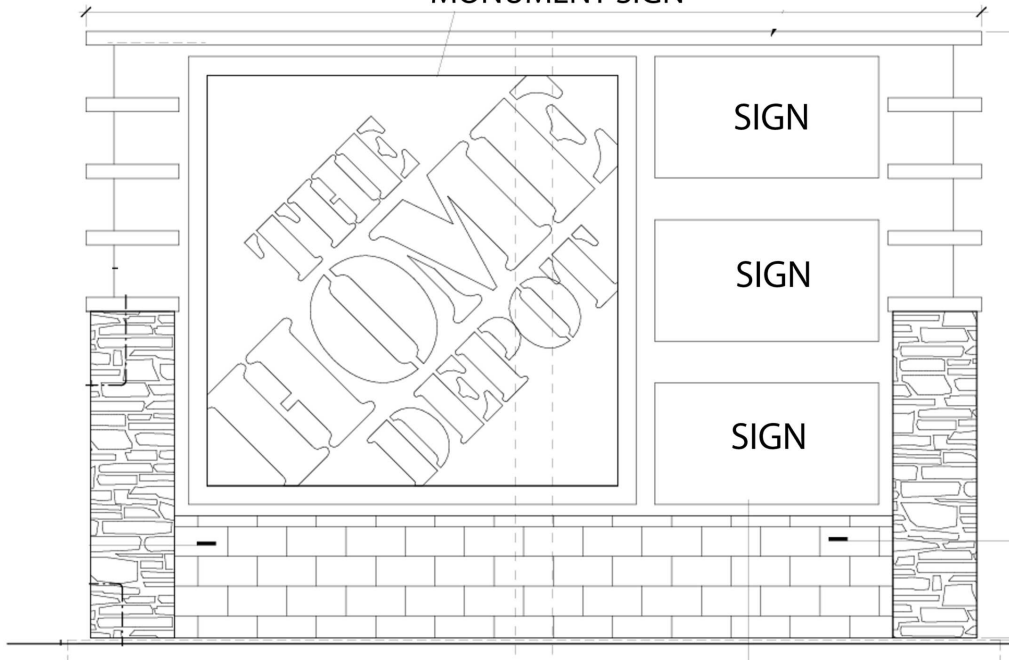
ATLANTA // TAMPA // PASADENA, CA // AUBURN // SARASOTA // BALTIMORE

No warranty or representation, expressed or implied, is made as to the accuracy of the information contained herein, and same is submitted subject to errors, omissions, change of price, rental or other conditions, withdrawal without notice, any special list conditions imposed by our Principals.

Location Map



MONUMENT SIGN



KEN STEPHENS

813.349.8418

kstephens@retail-pa.com

DAVE LEYVAS

602.625.9700

dleyvas@DCB-DRS.com