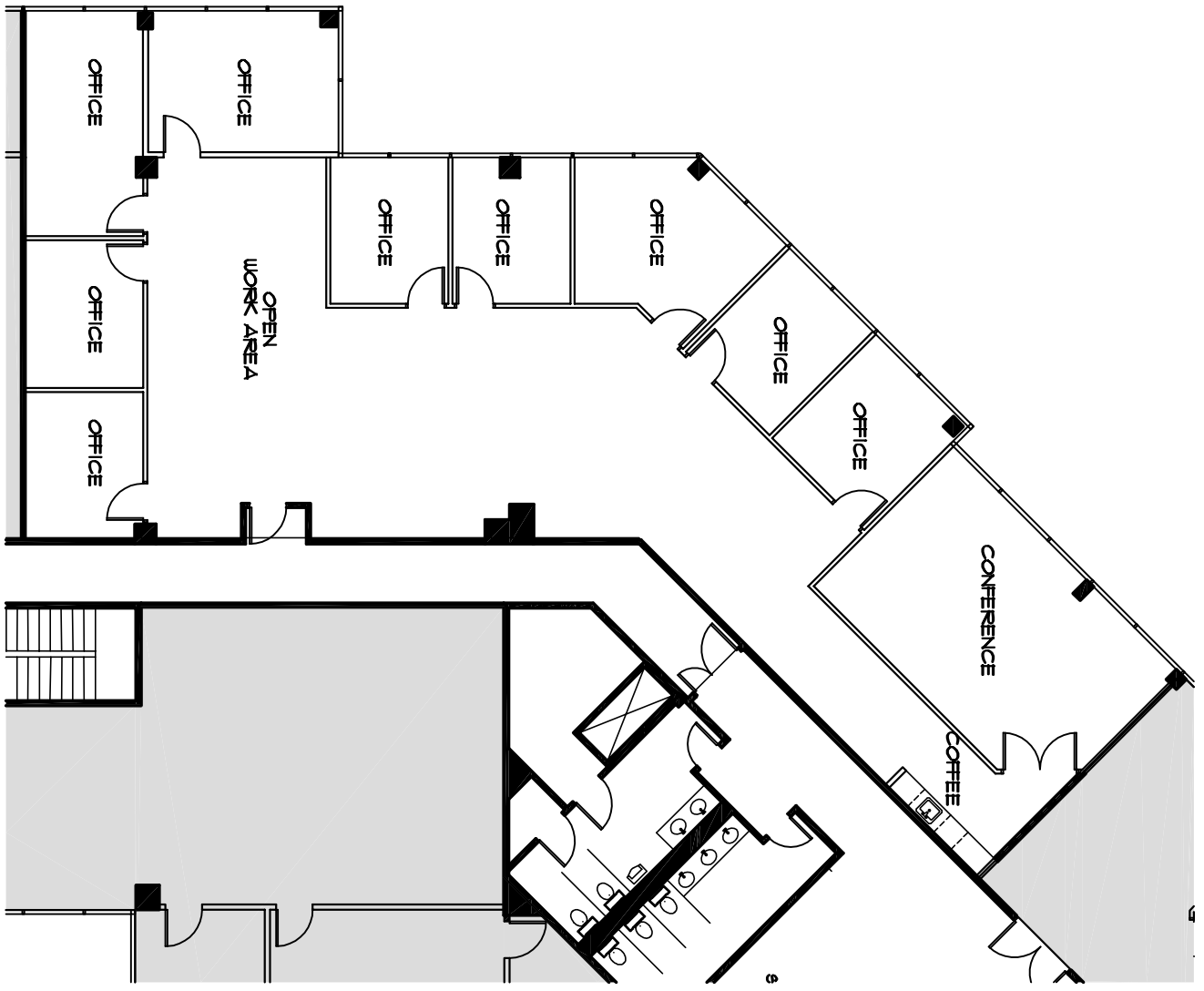
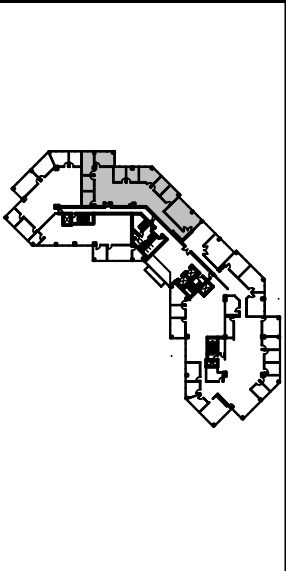


# GENERAL NOTE

SUITE 403 = 3,639 RSF

NOTE: ALL ROOM DIMENSIONS ARE APPROXIMATE AND SHOULD BE FIELD VERIFIED FOR COMPLETE ACCURACY.

# KEY PLAN



# JC POLEK

A R C H I T E C T S L L C  
4241 Conestoga Road, Elverson, PA 19520  
(610) 982-2549

SIX NESHAMINY INTERPLEX  
FLOOR FOUR - SUITE 403  
TREVOSE, PA 19053



# KORMAN COMMERCIAL PROPERTIES

TWO NESHAMINY INTERPLEX  
SUITE 305, TREVOSE, PA 19053  
PHONE: 215-244-5175 FAX: 215-245-6243

6

403