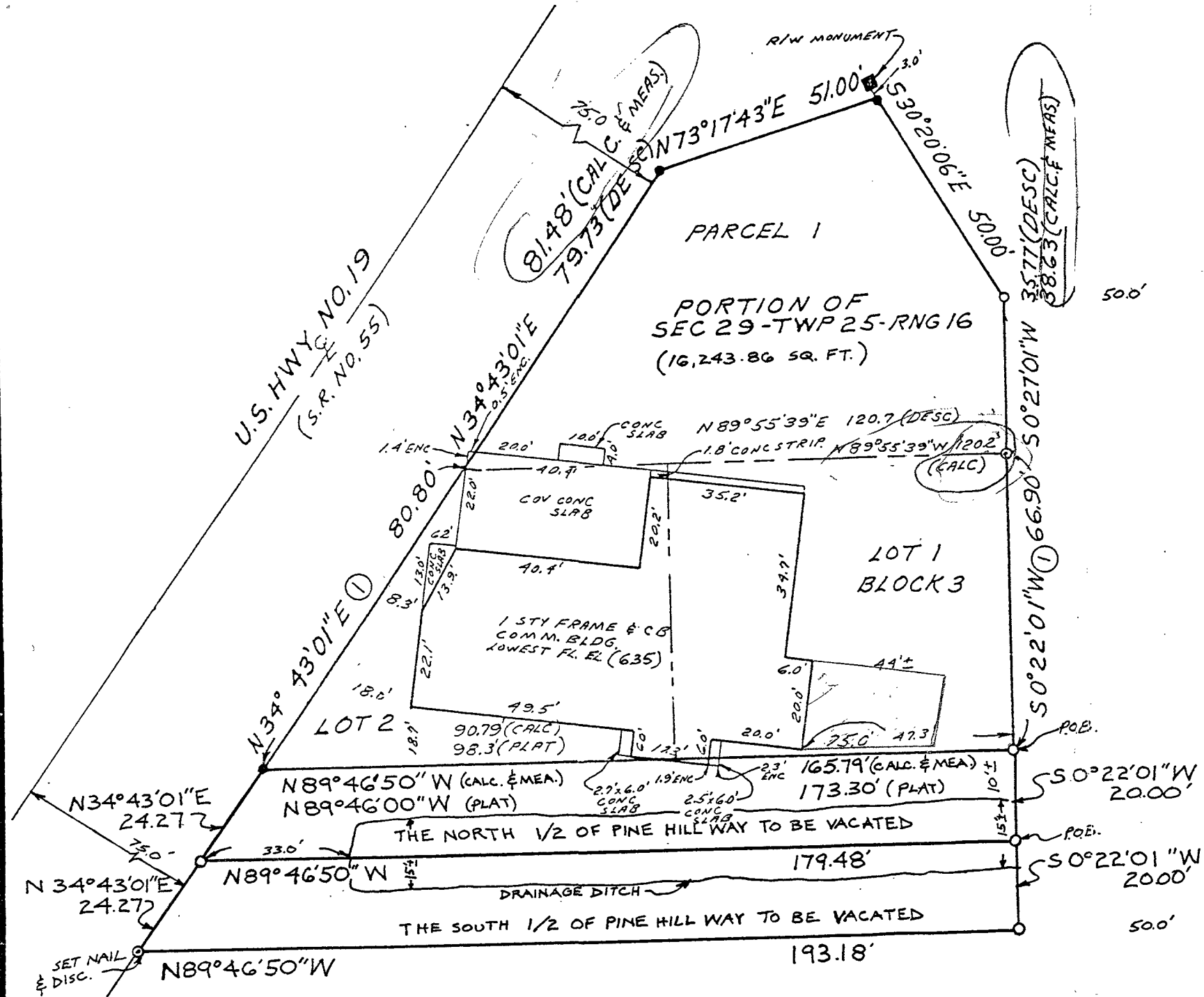
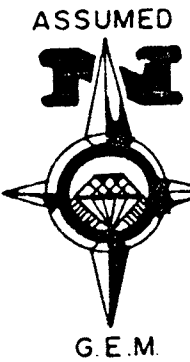


NOTE: BEARING MERIDIAN ESTABLISHED FROM ROAD RIGHT OF WAY LINE IN REFERENCE TO DATA SHOWN ON PLAT.

LEGEND

- FOUND CONCRETE MONUMENT
- FOUND 5/8" IRON PIN
- SET 5/8" IRON PIN
- () NUMBERS SHOWN IN PARENTHESES INDICATE ELEVATIONS REFERENCED TO N.G.V.D.



SHEET 1 OF 3 SHEETS
SEE SHEETS 2 AND 3 OF 3 SHEETS
FOR DESCRIPTION

GLOBAL ENGINEERING & MAPPING COMPANY, INC.
NEW PORT RICHEY, FLORIDA

CERTIFICATION
I HEREBY CERTIFY THAT THE SURVEY SHOWN HEREON MEETS THE MINIMUM TECHNICAL STANDARD FOR LAND SURVEYING DESCRIBED IN THE STATE OF FLORIDA RULE 21HH-6

DATE 11/13/87
DENNIS J. LECK, F.R.L.S. #2689

BOUNDARY SURVEY

SENT TO: RICHEY REALTY 7000 U.S. HIGHWAY 19 NEW PORT RICHEY, FL 34652	ORDER NO. 87-5169
CERTIFIED FOR: RICHEY REALTY JOHN MONTANA	DATE 11/13/87
CREW CHIEF: TW	DRAWN BY: ZDC ME
NOTES FILED: SUB FILE	CHECKED BY: JPC
	MAP NO. B-5202