

FOR SALE

3840 WILLIAMSBURG PARK BLVD. OFFICE CONDO



2929 Plummer Cove Rd., Suite 2
Jacksonville, FL 32223

3840 Williamsburg Park Boulevard, #4, Jacksonville, FL 32257



OFFERING SUMMARY

Sale Price:	\$270,000
Building Size:	1,430 SF
Available SF:	1,430
Number of Units:	1
Price / SF:	\$188.81
Year Built:	1986
Renovated:	2025
Zoning:	CO

PROPERTY OVERVIEW

This Mandarin office condo is move-in ready with new flooring throughout. The space is ideal for any professional or medical use and consists of a reception area, four (4) private offices, a kitchen/break room, and a restroom. This corner unit offers an abundance of sunlight and is tucked into the back building of a quiet office park. The roof of the building was completed this year (2025). The quarterly association fee is \$682.50.

PROPERTY HIGHLIGHTS

- Excellent Mandarin location
- End unit
- New roof
- Move-in ready
- Abundance of parking

PRESENTED BY:

AMANDA KINKADE

904.635.6376

amanda@kinkadecommercial.com

EXECUTIVE SUMMARY

FOR SALE

3840 WILLIAMSBURG PARK BLVD. OFFICE CONDO`



2929 Plummer Cove Rd., Suite 2
Jacksonville, FL 32223

3840 Williamsburg Park Boulevard, #4 Jacksonville, FL 32257



PRESENTED BY:

AMANDA KINKADE

904.635.6376

amanda@kinkadecommercial.com

ADDITIONAL PHOTOS

FOR SALE

3840 WILLIAMSBURG PARK BLVD. OFFICE CONDO`



2929 Plummer Cove Rd., Suite 2
Jacksonville, FL 32223

3840 Williamsburg Park Boulevard, #4 Jacksonville, FL 32257



PRESENTED BY:

AMANDA KINKADE

904.635.6376

amanda@kinkadecommercial.com

ADDITIONAL PHOTOS

FOR SALE

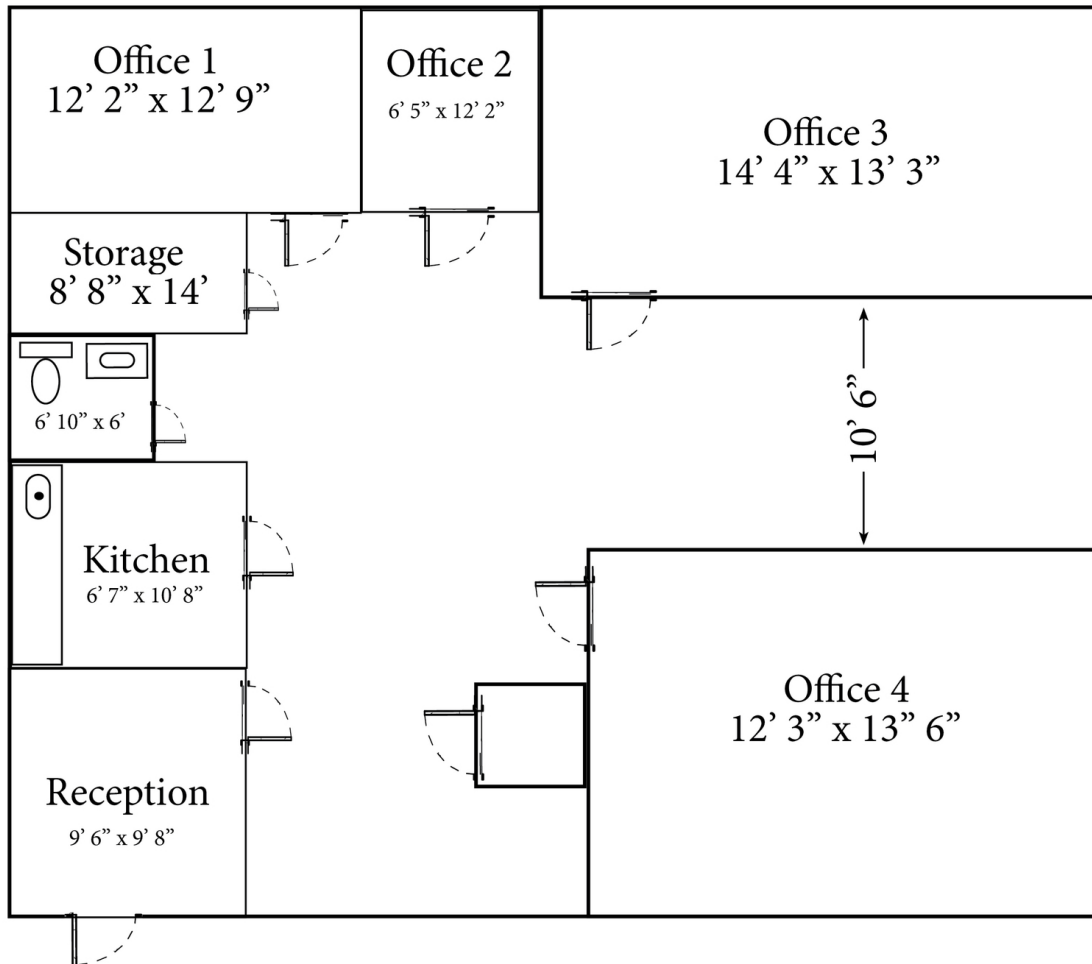
3840 WILLIAMSBURG PARK BLVD. OFFICE CONDO`



2929 Plummer Cove Rd., Suite 2
Jacksonville, FL 32223

3840 Williamsburg Park Boulevard, #4 Jacksonville, FL 32257

#4



PRESENTED BY:

AMANDA KINKADE

904.635.6376

amanda@kinkadecommercial.com

FOR SALE

3840 WILLIAMSBURG PARK BLVD. OFFICE CONDO



2929 Plummer Cove Rd., Suite 2
Jacksonville, FL 32223

3840 Williamsburg Park Boulevard, #4 Jacksonville, FL 32257



PRESENTED BY:

AMANDA KINKADE

904.635.6376

amanda@kinkadecommercial.com

LOCATION MAP

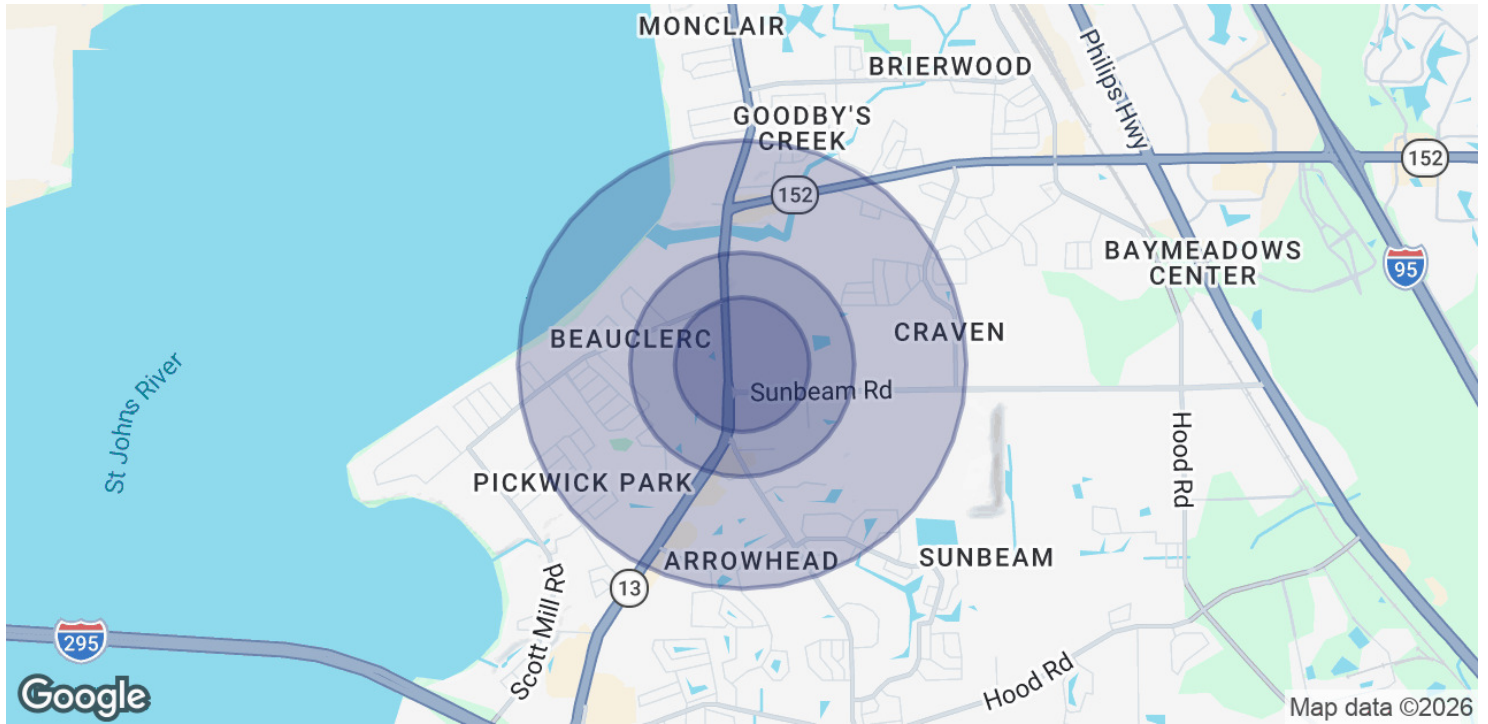
FOR SALE

3840 WILLIAMSBURG PARK BLVD. OFFICE CONDO`



2929 Plummer Cove Rd., Suite 2
Jacksonville, FL 32223

3840 Williamsburg Park Boulevard, #4 Jacksonville, FL 32257



POPULATION	0.3 MILES	0.5 MILES	1 MILE
Total Population	1,387	3,385	12,103
Average Age	42	42	42
Average Age (Male)	40	40	40
Average Age (Female)	44	44	44

HOUSEHOLDS & INCOME	0.3 MILES	0.5 MILES	1 MILE
Total Households	676	1,565	5,307
# of Persons per HH	2.1	2.2	2.3
Average HH Income	\$90,813	\$95,355	\$101,775
Average House Value	\$277,511	\$303,030	\$322,099

Demographics data derived from AlphaMap

PRESENTED BY:

AMANDA KINKADE

904.635.6376

amanda@kinkadecommercial.com