



9209 W 110th St Overland Park, Kansas

9209 W 110th Street is located within a highly desirable suburban office park within Johnson County along the College Boulevard corridor. Highway access is impeccable with Highway 69 providing North / South travel and I-435 East / West just minutes from the front door.

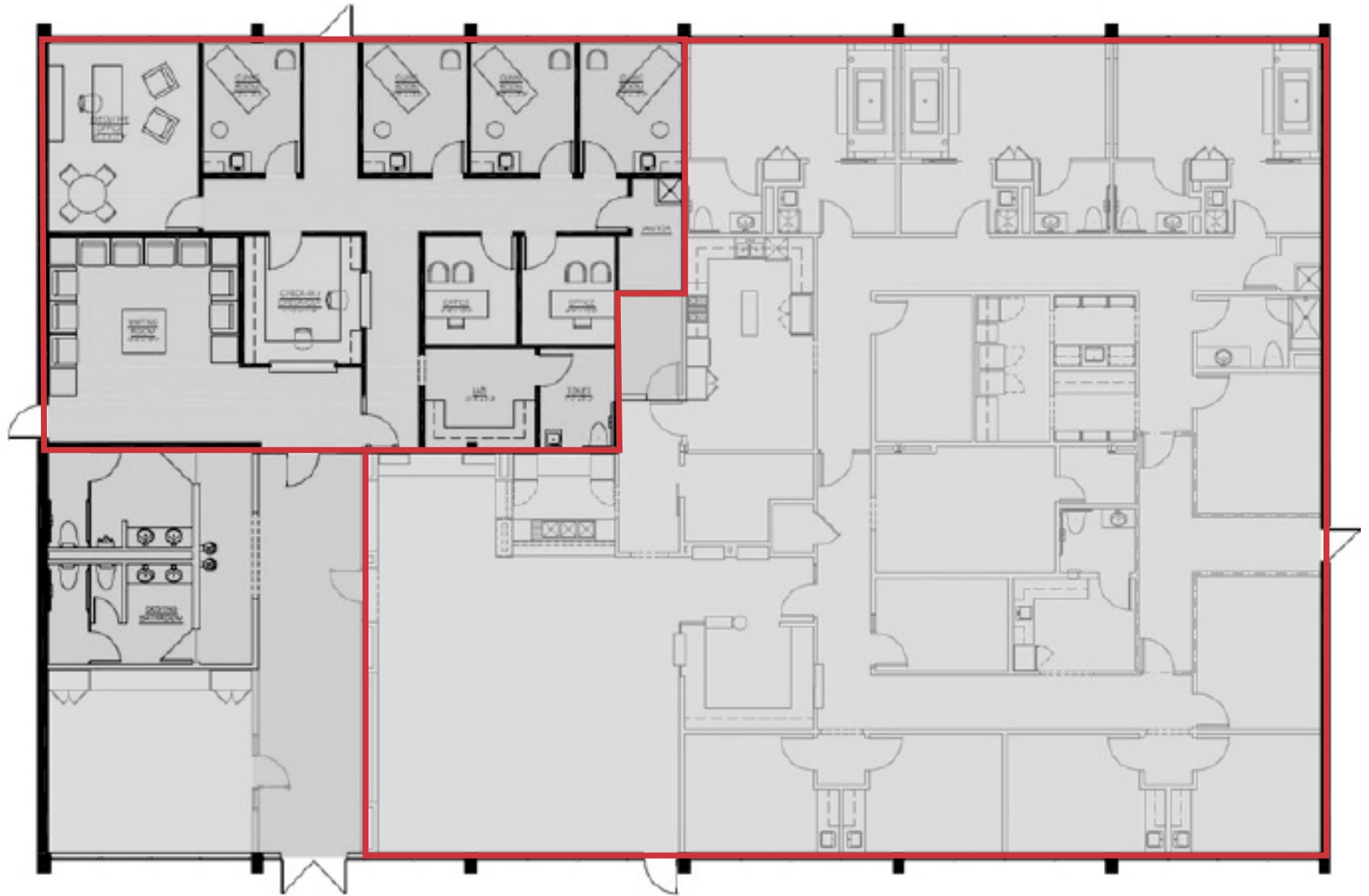
Property Features

- 9,499 SF Single Story Office Building
- ±7,000 - 9,499 SF Available for Lease
- Built in 1978
- 1.06 Acre Lot
- Brick and Steel Construction
- Zoned CP-O
- Lease Rate: \$24/SF Full Service
- Sale Price: \$1,925,000

For more information:

Mark Talley, CCIM, SIOR
+1 913 956 5810
mtalley@nai-heartland.com

Mike Sonnenberg, CCIM
+1 913 956 5812
mike@nai-heartland.com





Mark Talley, CCIM, SIOR
+1 913 956 5810 • mttalley@nai-heartland.com

Mike Sonnenberg, CCIM
+1 913 956 5812 • mike@nai-heartland.com

4400 College Blvd, Suite 170
Overland Park, KS 66211
+1 913 362 1000
nai-heartland.com