



GUGGENHEIM | GROUP



OFFICE SPACE FOR LEASE / SALE

# 14363 Saratoga Avenue Saratoga, CA 95070

**ERIC JONG**  
Vice President  
Guggenheim Group  
(669) - 300 - 6048  
eric@guggenheimrgi.com  
CalDRE #01486494

**AL GUGGENHEIM**  
President  
Guggenheim Group  
(669) - 300 - 6041  
al@guggenheimrgi.com  
CalDRE #00943363

**(669) - 300 - 6040 GUGGENHEIMRGI.COM CalDRE #01792244**

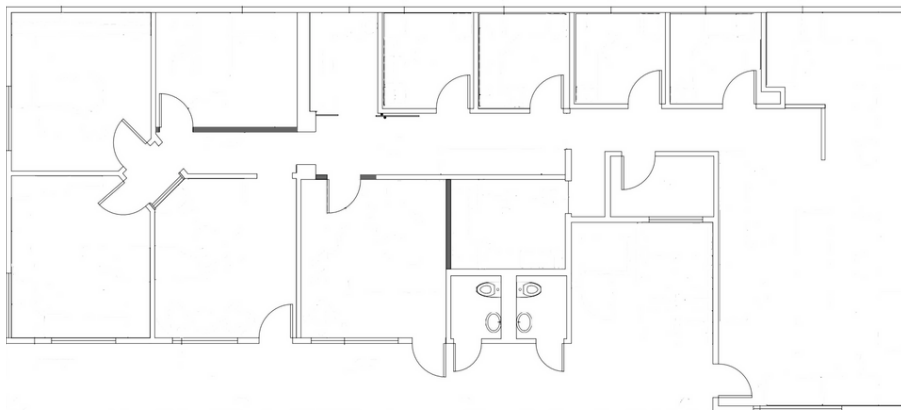
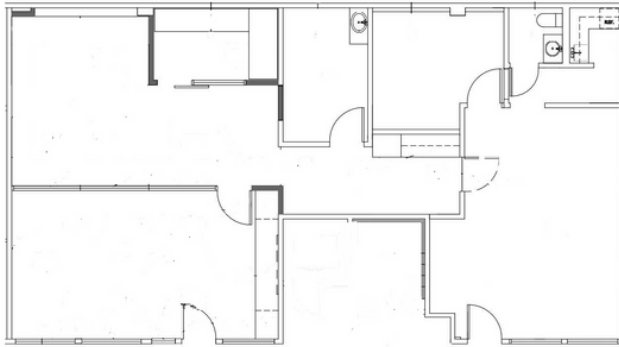
*"No warranty or representation expressed or implied is made as to the accuracy of the above information. This information is submitted subject to errors, omissions, change of price, rental rates or other conditions, withdrawal notice, and any special listing conditions."*



SPACE  
1,488 RSF - 2,433 RSF

LEASE RATE  
\$3.50 RSF/MO MG

**Suite 102**  
1,488 RSF  
First Floor



**Suite 200**  
2,433 RSF  
Second Floor

NOT TO SCALE

## OFFERING SUMMARY

<b>Building Size:</b>	5,000 SF
<b>Available SF:</b>	1,488 - 2,433 RSF
<b>Year Built:</b>	1965
<b>Zoning:</b>	CC

## PROPERTY OVERVIEW

- Premier downtown Saratoga location
- Prominent Saratoga Avenue signage
- Excellent access to Highway 85, 9, 17 and Big Basin Way
- Short Walk to Downtown Restaurants and Amenities
- Call to Tour
- FOR SALE INQUIRIES, PLEASE CONTACT BROKER



SPACES	LEASE RATE	SPACE SIZE
Suite 102	\$3.50 RSF/MO Modified Gross	1,488 RSF
Suite 200	\$3.50 RSF/MO Full Service	2,433 RSF

**CONTACT BROKER  
FOR SALE PRICE**

(669) - 300 - 6040 GUGGENHEIMRGI.COM CalDRE #01792244

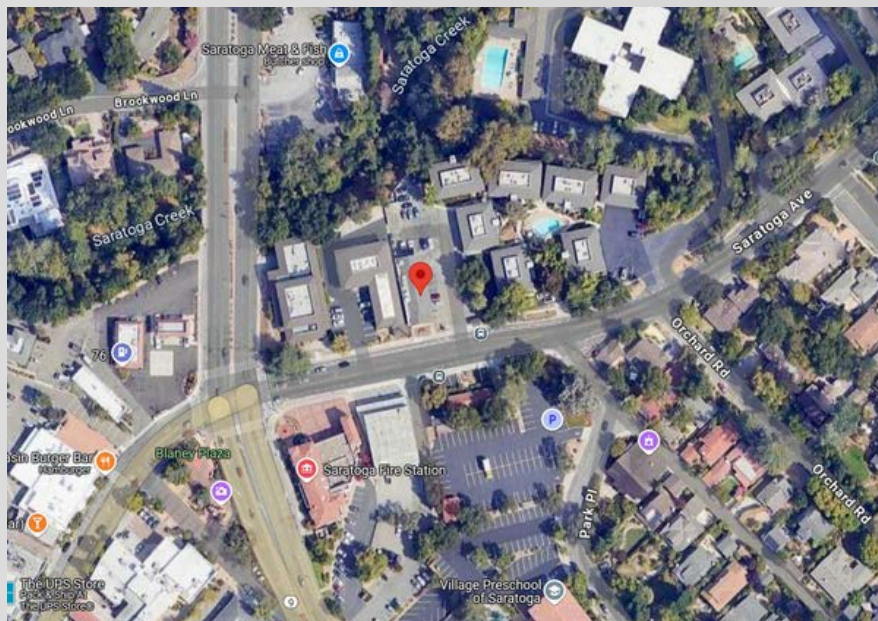
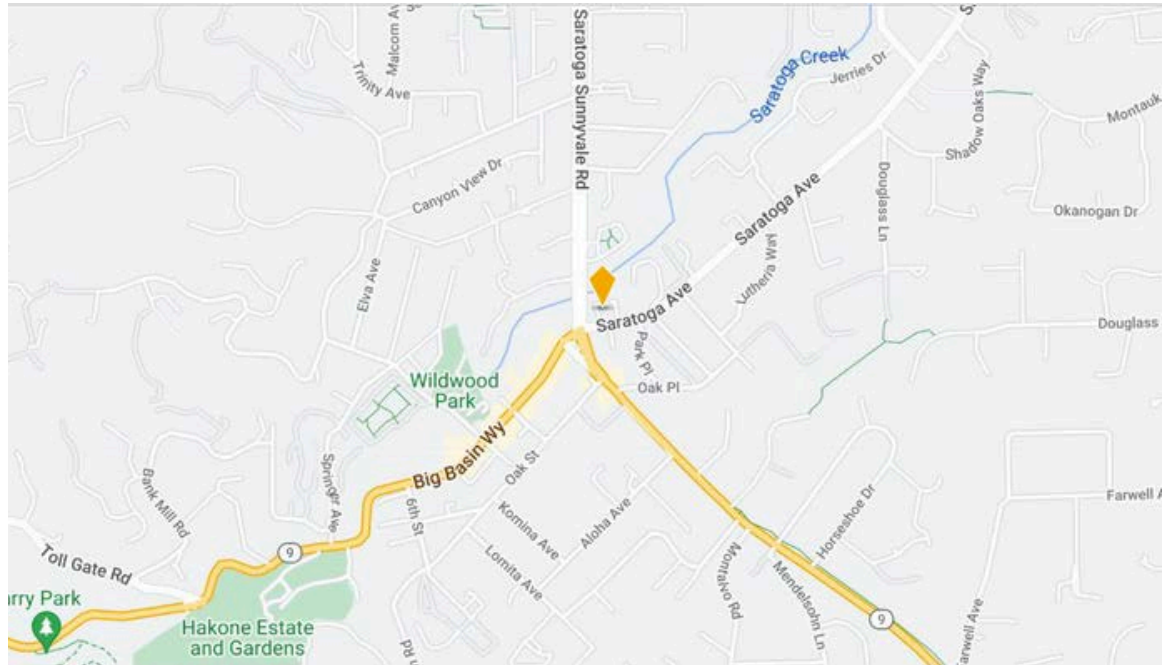
*"No warranty or representation expressed or implied is made as to the accuracy of the above information. This information is submitted subject to errors, omissions, change of price, rental rates or other conditions, withdrawal notice, and any special listing conditions."*



SPACE  
1,488 RSF - 2,433 SF

LEASE RATE  
\$3.50 RSF/MO MG

## Location Maps: 14363 Saratoga Avenue



### Nearby Amenities

- Saratoga Village Center
- Plumed horse
- Big Basin Cafe
- Bell Tower Cafe
- Mint Leaf Cuisine
- GOGA
- Hakone Estate Gardens

(669) - 300 - 6040 GUGGENHEIMRGI.COM CaDRE #01792244

*"No warranty or representation expressed or implied is made as to the accuracy of the above information. This information is submitted subject to errors, omissions, change of price, rental rates or other conditions, withdrawal notice, and any special listing conditions."*

