



# THE HANNA BUILDING

1422 Euclid Avenue, Cleveland, Ohio 44115

## Cleveland's Historic Playhouse Square District



# THE HANNA BUILDING

## Address

1422 Euclid Avenue  
Cleveland, Ohio 44115

## Lease Rate

\$16.00-\$18.00/SF FSG

## Building Size

337,000 SF

## Max Contiguous

Up to 24,000 SF

## # of Floors

Sixteen (16)

## Security

24/7 Manned Security Guard

## Parking

Attached Garage

## Building Factor

10%

## Year Built

1921

## Year Refurbished

2000





# THE HANNA BUILDING

Features & Amenities



## Safe & Secure

*24/7 Security Guard & Attached Parking Garage*

## On-Site Property Management

## Building Conference Rooms

## Easy Access to Major Routes

*Close to I-77, I-90 & The Shoreway*

## Great Public Transportation

*RTA Healthline & Bus Stop*

## The Residences at Hanna

*103 One & Two Bedroom Apartment Units*

## The Lumen

*318 One to Three Bedroom Apartment Units*



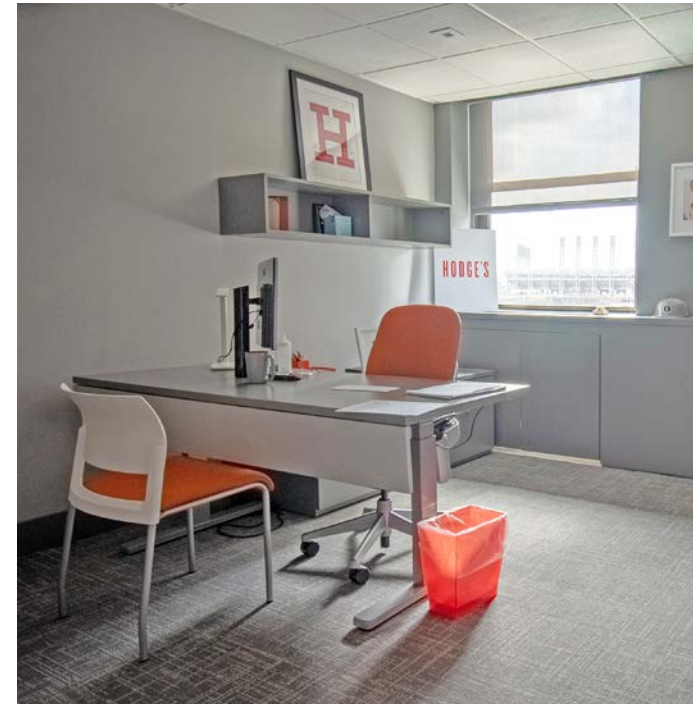
Cibrèo





# THE HANNA BUILDING

## Tenant Suite Examples



The Hanna Building has an array of flexible opportunities whether you're a non-profit looking for a small home-base office or a Fortune 500 corporation looking for your new HQ.

Come experience the historic feel of the neighborhood while working in the most modern office suites the Playhouse Square District has to offer.



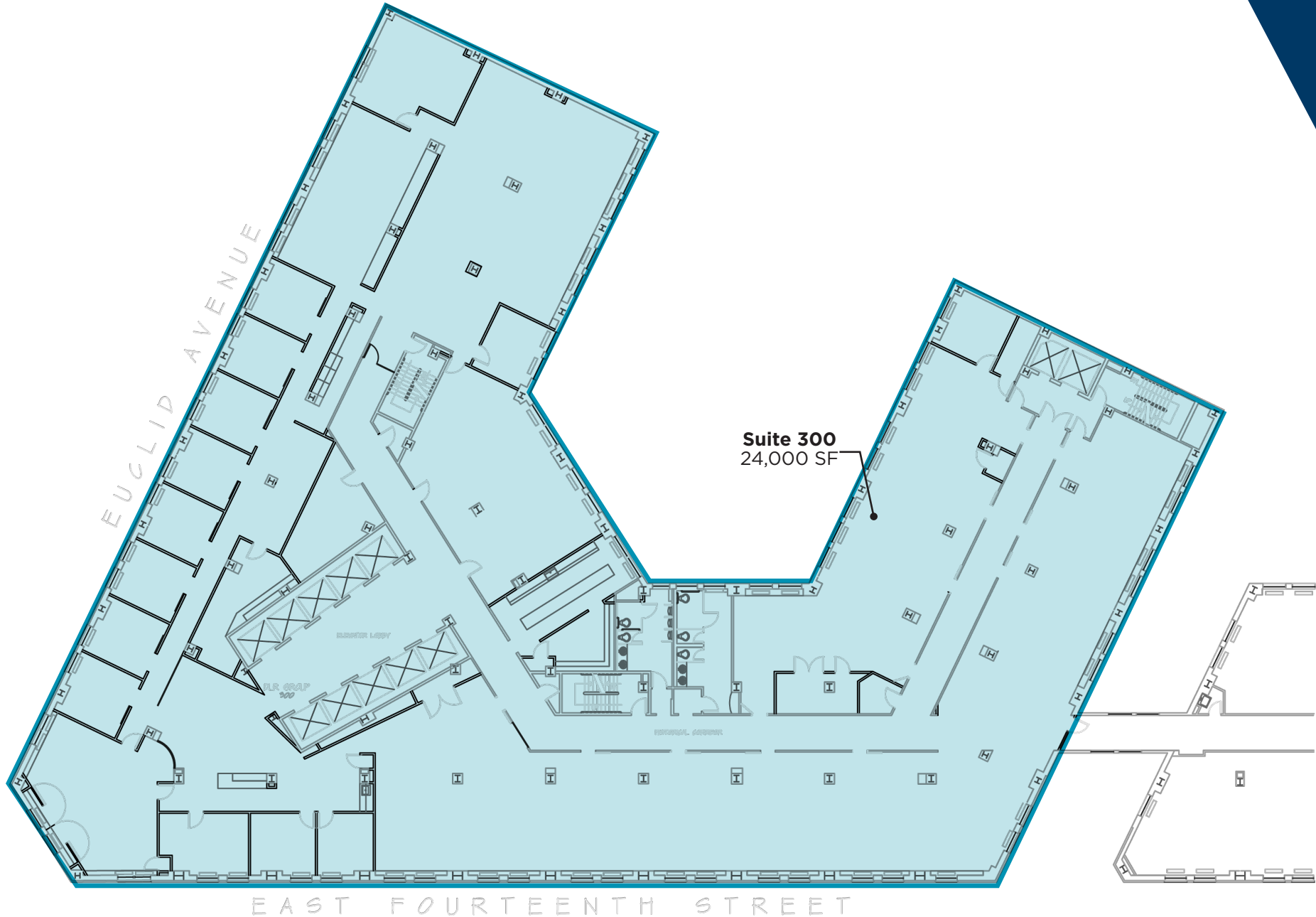
# THE HANNA BUILDING

First Floor | Retail Max Contiguous: 2,105 SF



# THE HANNA BUILDING

Third Floor | Max Contiguous: 24,000 SF





# THE HANNA BUILDING

Fourth Floor | Backstage at Playhouse Square Coworking



Virtual Tour

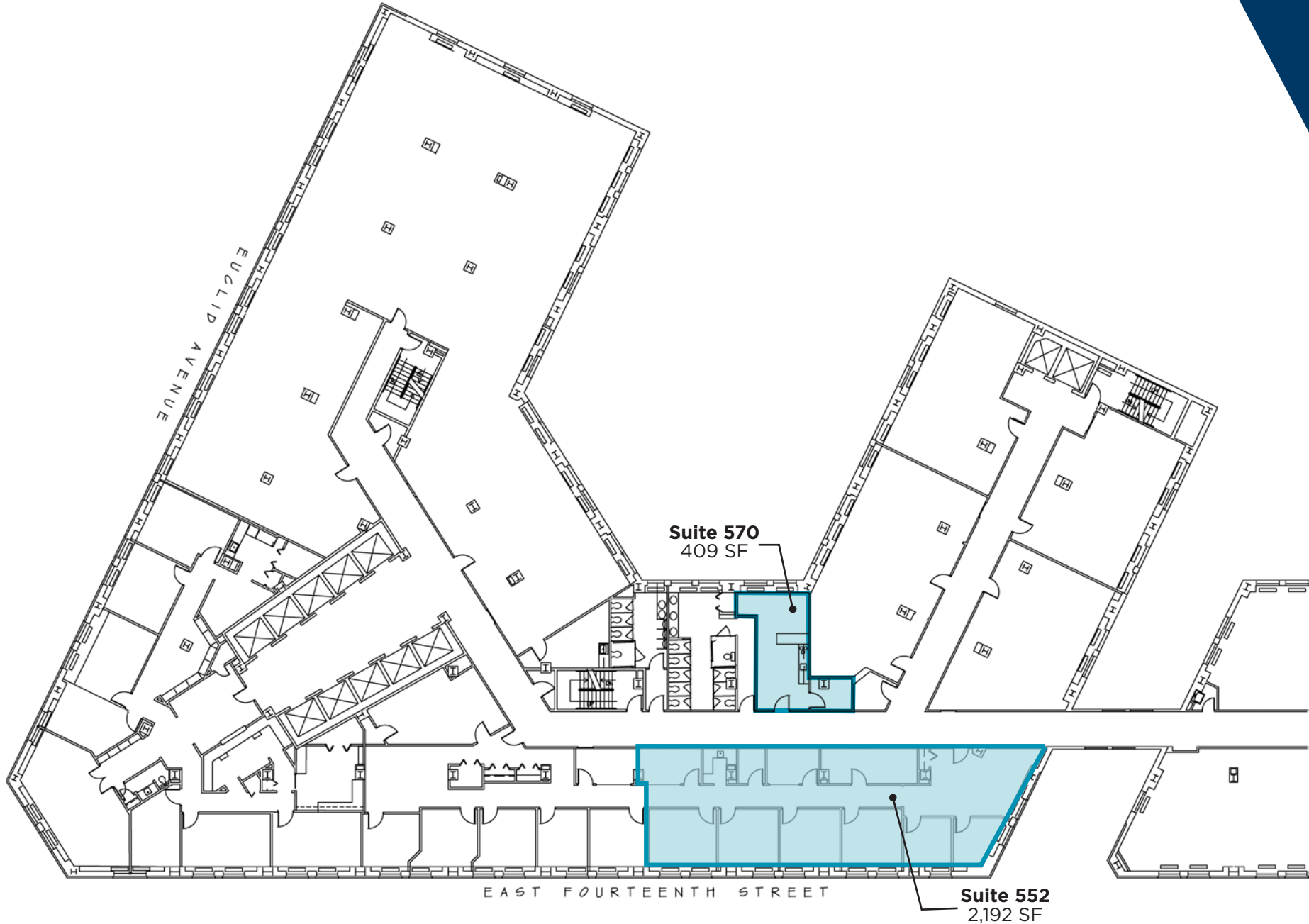
## Backstage at Playhouse Square

- \$750 per office
- \$450 per cubicle
- Flexible lease term
- All furniture included



# THE HANNA BUILDING

Fifth Floor | Max Contiguous: 409 SF



**Suite 570**  
409 SF

**Suite 552**  
2,192 SF



# THE HANNA BUILDING

Sixth Floor | Max Contiguous: 7,710 SF



# THE HANNA BUILDING

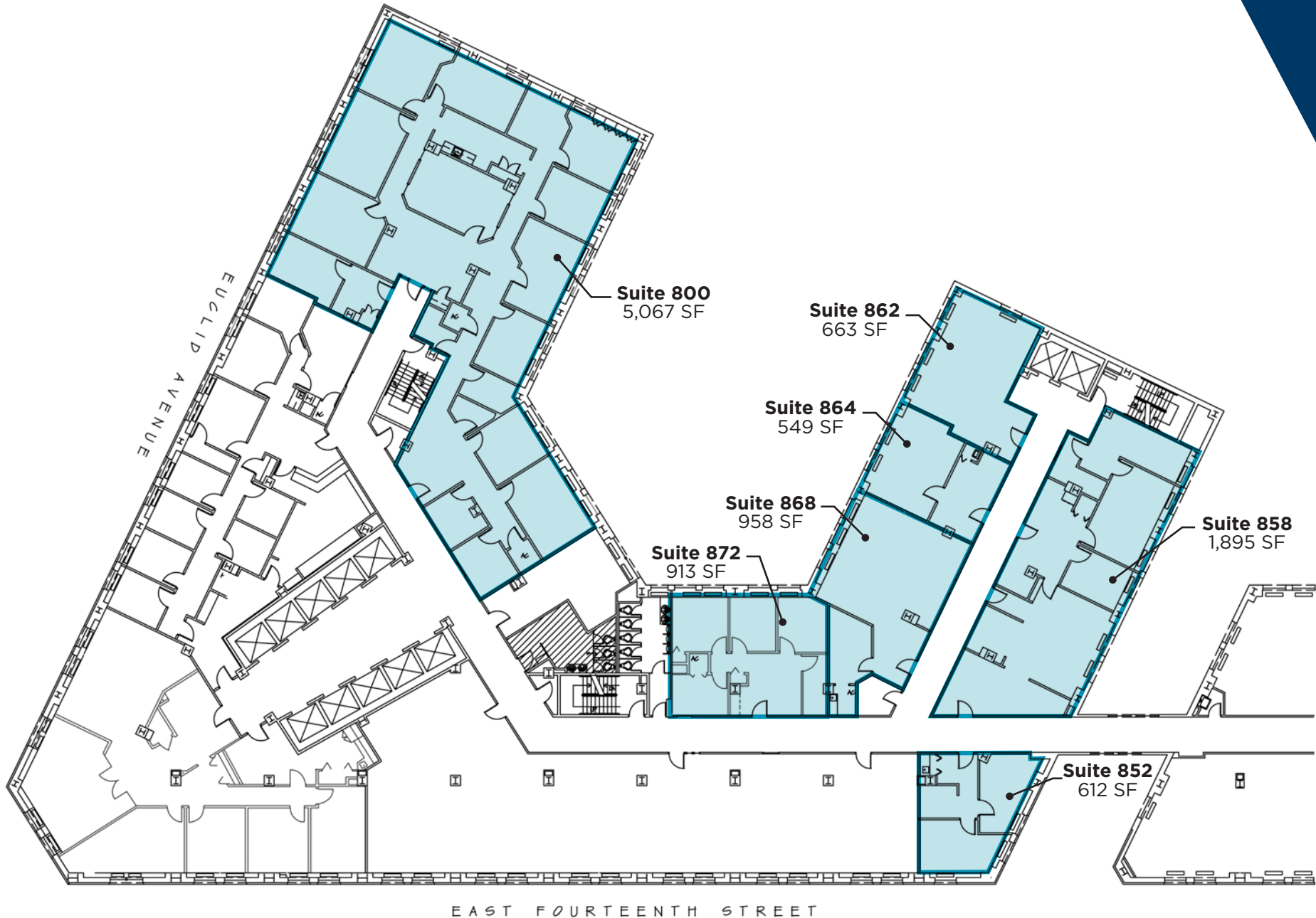
Seventh Floor | Max Contiguous: 5,740 SF





# THE HANNA BUILDING

Eighth Floor | Max Contiguous: 5,067 SF



# THE HANNA BUILDING

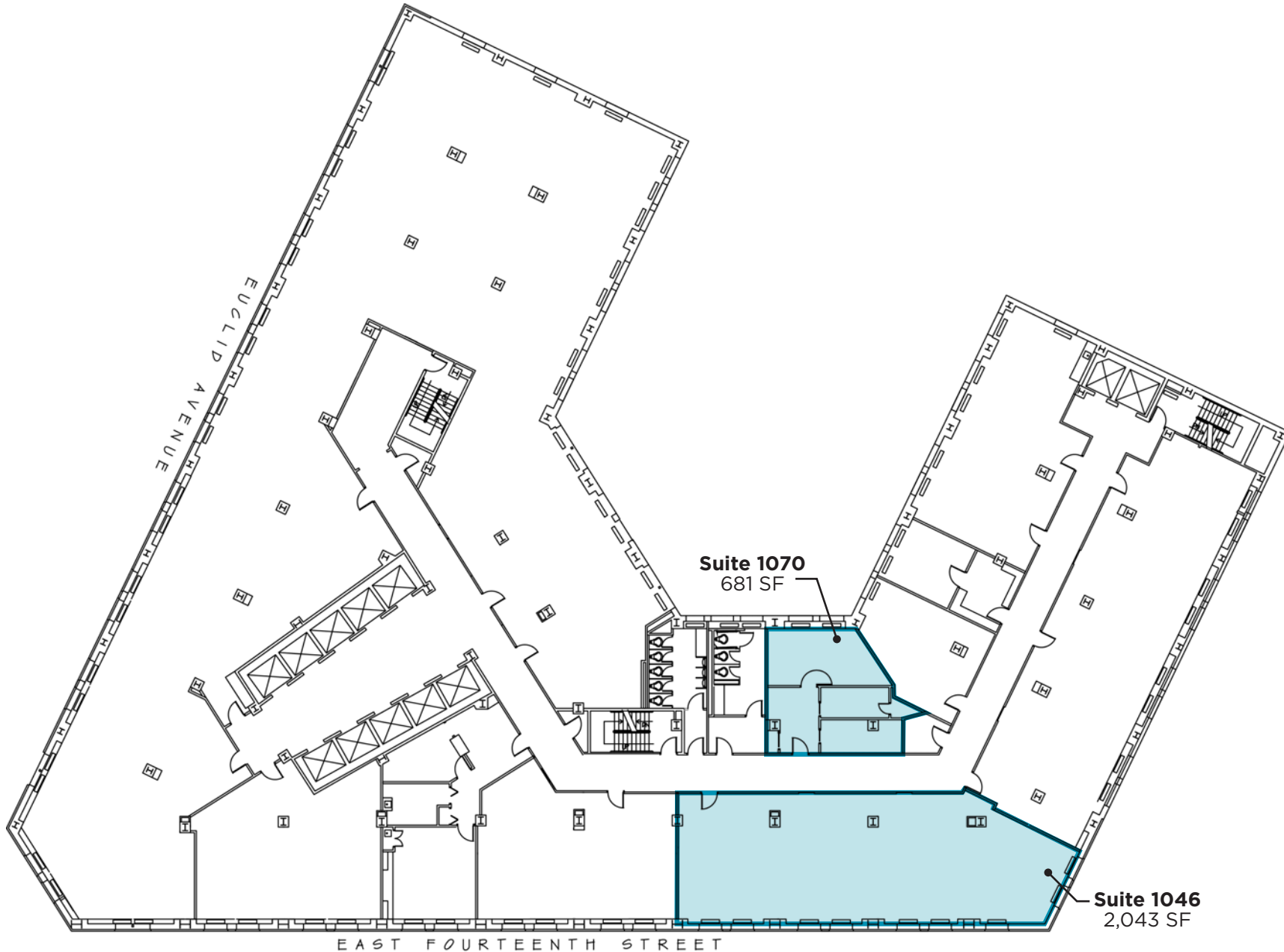
Ninth Floor | Max Contiguous: 11,285 SF





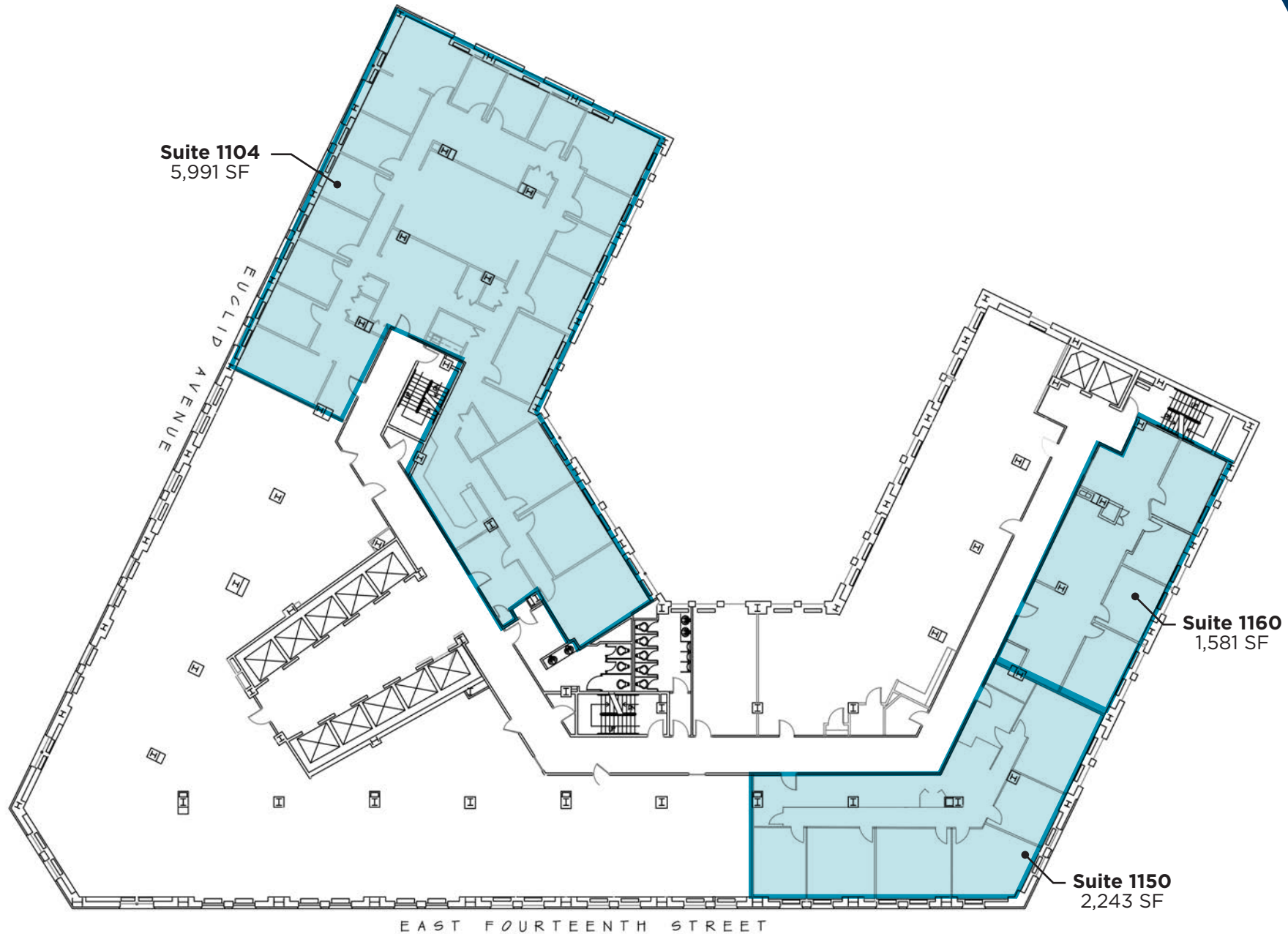
# THE HANNA BUILDING

Tenth Floor | Max Contiguous: 2,043 SF



# THE HANNA BUILDING

Eleventh Floor | Max Contiguous: 5,991 SF





# THE HANNA BUILDING

Twelfth Floor | Max Contiguous: 24,000 SF



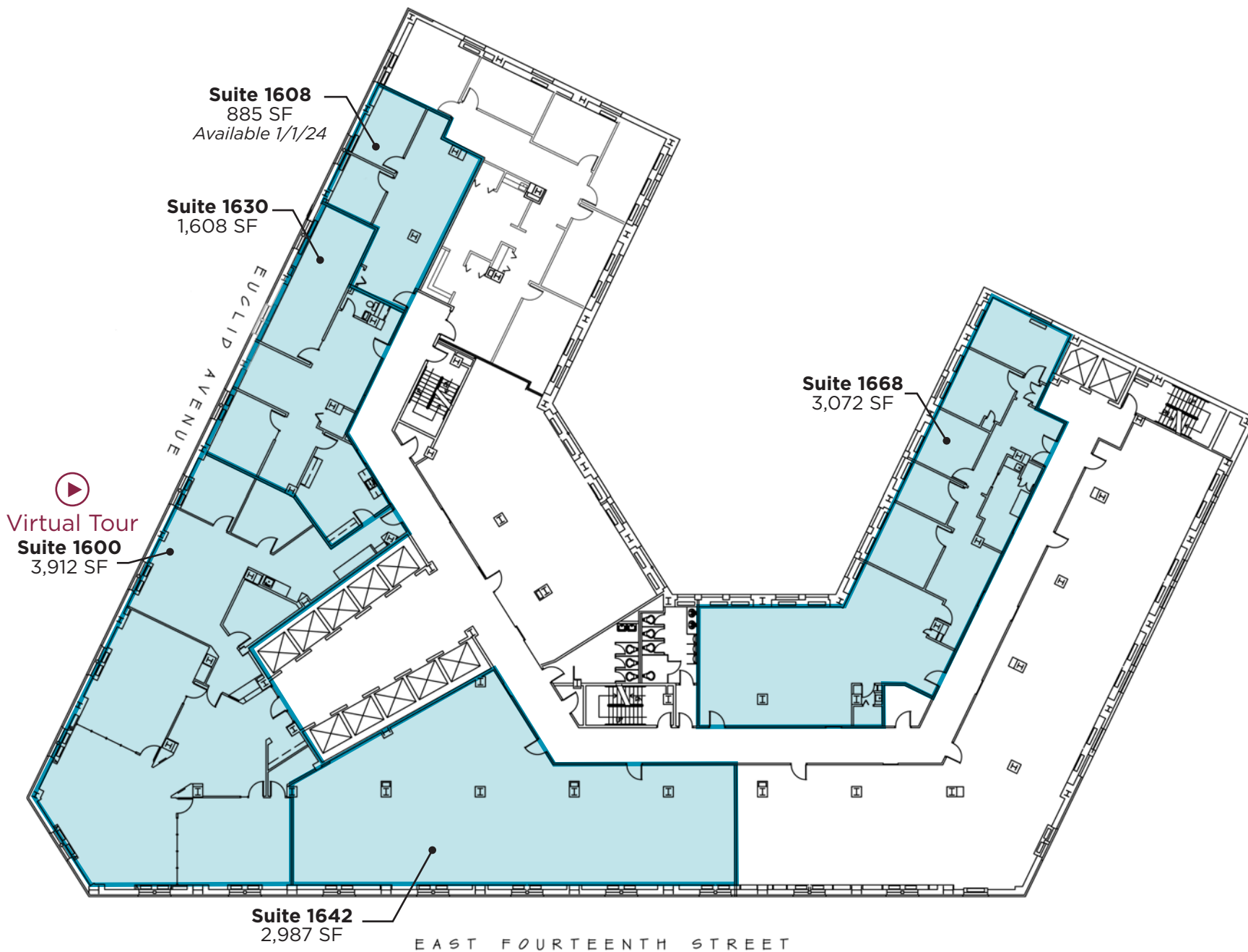
# THE HANNA BUILDING

Fifteenth Floor | Max Contiguous: 5,216 SF



# THE HANNA BUILDING

Sixteenth Floor | Max Contiguous: 9,392 SF







KEYBANK STATE THEATRE

## KEYBANK STATE THEATRE

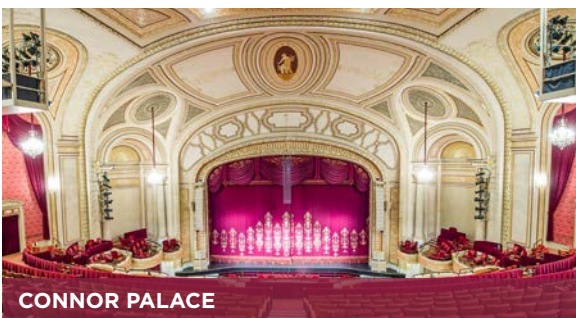
**Purpose:** Movies & Vaudeville

**Style:** Combines Roman, Greek & European Baroque

**Features:** Four 50-foot murals by American Modernist James Daugherty (1890-1974). Fifth mural by Arnold Englander. Total length of lobby from street to theatre is 320 feet (said to be the longest in the world)

**First Show:** Movie- A Polly with a Past & Buster Keaton short, Neighbors. Hyman Spitalny and his orchestra

**Originally Opened:** February 5, 1921



CONNOR PALACE

## CONNOR PALACE

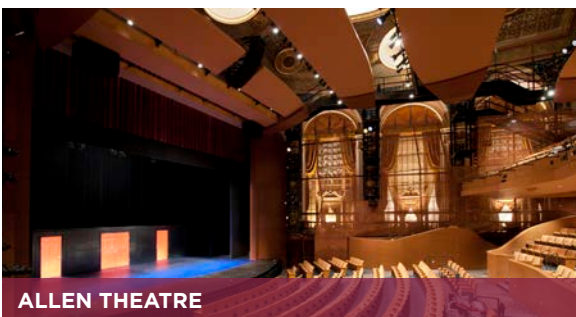
**Purpose:** Vaudeville (B.F. Keith);(Modified for movies, 1926)

**Style:** French Imperial

**Features:** Grand Hall, Czechoslovakian crystal chandeliers, blue urn made in Serves, France before WWI. Seven floors of dressing rooms backstage

**First Show:** Vaudeville- Elsie Janis, the Cansinos, and Grace Hayes, several additional acts and a big band. (Orch. seat was \$1.65)

**Originally Opened:** November 6, 1922



ALLEN THEATRE

## ALLEN THEATRE

**Purpose:** Movies

**Style:** Italian Renaissance

**Features:** One of the few "daylight atmospheric" theaters in the country. Side boxes decorative only

**First Show:** Silent movie- The Greatest Love- Phillip Spitalny and 35 piece orchestra

**Originally Opened:** April 1, 1921



HANNA THEATRE

## HANNA THEATRE

**Purpose:** Traditional Theater

**Style:** Italian Renaissance

**Features:** Interior features bronze trimming and marble corridors. Original ceiling- coffered Roman- remains today

**First Show:** Play- Mark Twain's The Prince and The Pauper starring William Haversham

**Originally Opened:** March 28, 1921



MIMI OHIO THEATRE

## MIMI OHIO THEATRE

**Purpose:** Traditional Theater

**Style:** Italian Renaissance

**Features:** Italian Renaissance lobby contained 3 murals by Sampitrotti, entitled "Cycle of Venus." Two paintings by P. Pizzi, in balcony of 14th century Venetian designed auditorium (All lost in lobby fire of 1964)

**First Show:** Play- The Return of Peter Grimm with David Warfield

**Originally Opened:** February 14, 1921

# PSQ HISTORY

Playhouse Square's original five (5) venues (Mimi Ohio, Connor Palace, KeyBank State, Allen and Hanna) were constructed in the 1920s in a mere 19 months. Impacted by the rise of television and population flight to suburbia, by 1968-69 all but the Hanna were eventually boarded up, as entertainment also moved to the suburbs. But in the 1970s, a grass-roots effort saved the historic venues from the wrecking ball, restoring and re-opening the theaters one by one, ushering in a new era of downtown revitalization, which was heralded by the media as "one of the top 10 successes in Cleveland history."



# PLAYHOUSE SQUARE

## Unique Features



### PLAYHOUSE SQUARE “BLADE” SIGN

The Playhouse Square “blade” sign replaced the similarly shaped “Playhouse Square Center” sign on the Loews building. This version, though larger, is much more energy efficient. It runs off the same amount of energy as two (2) toasters.

### GE CHANDELIER

North America’s largest outdoor chandelier is 20 feet tall, 8,500 pounds, and made up of 4,200 crystals.



**MORE THAN  
1,000,000 GUESTS  
EACH YEAR**

**1,000+**

**ANNUAL EVENTS TAKE  
PLACE IN PLAYHOUSE  
SQUARE DISTRICT**



**LARGEST PERFORMING  
ARTS CENTER IN  
THE COUNTRY  
(OUTSIDE OF NEW YORK)**



**45K+  
TICKET HOLDERS  
ANNUALLY**



# PLAYHOUSE SQUARE

## DINING

- 1942 Tacos & Tequilas
- Bin216
- Cibreo
- Corbo's Bakery
- Cowell & Hubbard
- District
- The Fruit Stand
- Ghost Light Restaurant & Lounge
- Green Rooster Farms
- Hofbrauhaus
- Parnell's Pub
- Phuel Cafe
- Republic Food & Drink
- Sittoo's
- Starbucks
- Subway
- Yours Truly Restaurant
- Zaytoon Lebanese kitchen

## ENTERTAINMENT

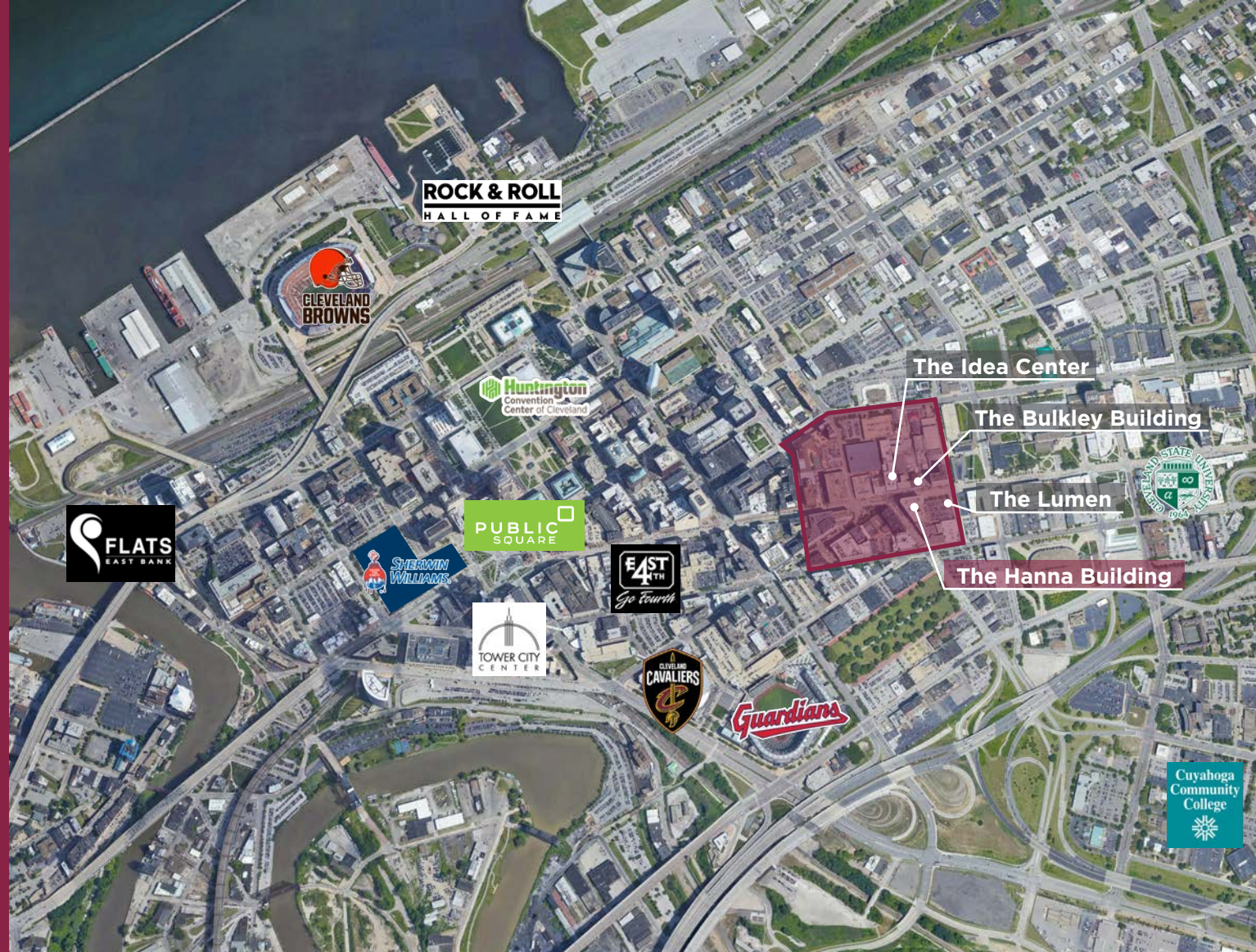
- Allen Theatre
- Connor palace
- Hanna theatre
- Kennedy's Theatre
- KeyBank State Theatre
- MIMI Ohio Theatre
- The Outcalt Theatre
- The Helen
- Westfield Studio Theatre

## BANKING

- Chase Banking
- US Bank

## STAY

- Residences at Hanna
- The Lumen
- Crowne Plaza Hotel





# TENANT PARKING

17 Parking Options with over 3K Parking Spaces



CONTACT	DAILY	EARLY BIRD	MONTHLY	RESERVED
1 Playhouse Square Garage 216.640.8770	\$18.00	\$9.00 (8:30AM)	\$170.00	\$215.00
2 Hanna Garage 216.621.5193	\$10.00	--	\$185.50	\$211.50
3 U.S. Bank Garage 216.696.5311	\$12.00	--	--	--
4 Halle Building Garage 216.241.2139	\$13.00	\$6.00 (8:30AM)	\$190.00	--
5 Platinum Parking (1743 East 17th Street) 216.539.1292	\$6.00	--	\$97.20 \$124.20	--
6 Shaia's Parking (Chester Avenue) 216.621.0321	\$6.00 \$16.00 overnight	--	\$110.00 6AM-6PM Weekdays	--
7 Platinum Parking (1600 Payne Avenue) 216.539.1292	\$7.00	--	\$110.00 145.80	--
8 Shaia's Parking (1444 Payne Avenue) 216.621.0328	\$6.00	--	\$100.00 6AM-6PM Weekdays	\$125.00 24/7
9 Shaia's Parking (E. 13th Street & Chester Avenue) 216.621.0328	\$6.00	--	--	--
10 Platinum Parking (1374 Chester Ave) 216.539.1292	\$7.00	--	\$130.00 no 24-hour access	--
11 Platinum Parking (Lot 806) (1832 E. 13th St) 216.539.1292	\$9.00	--	\$129.60 no 24-hour access	--
12 Shaia's Parking (Prospect Avenue & E. 17th St) 216.621.0328	\$8.00	\$6.00 (8:30AM)	\$140.00 Limited	\$150.00
13 Platinum Parking (Lot 106) (1416 Prospect Ave) 216.539.1292	\$9.00	--	\$140.40	\$167.40 24/7
14 Platinum Parking (2171-2199 E. 14th St) 216.539.1292	\$8.00	--	\$118.80	\$145.80
15 Platinum Parking (E. 14th Street & Prospect Avenue) 216.539.1292	--	--	\$124.20	--
16 Platinum Parking (1234 Bolivar Road) 216.539.1292	\$8.00	--	\$108.00	\$135.00 24/7
17 Platinum Parking (1107 Prospect Avenue)	\$8.00	--	\$97.20 \$124.20 24hr access	--



Disclaimer: Parking rates and contact information current as of July 2022. Rates subject to change without notice: Please note that parking information is for daytime/normal business hours (8 am - 6 pm)





**7AM**

Eat breakfast at  
Green Rooster Cafe

**12PM**

Grab Lunch at  
Yours Truly Restaurant

**3PM**

Enjoy one of the many free classes  
offered on at the U.S. Bank Plaza

**7PM**

See a Broadway  
musical at  
Connor Palace

**10AM**

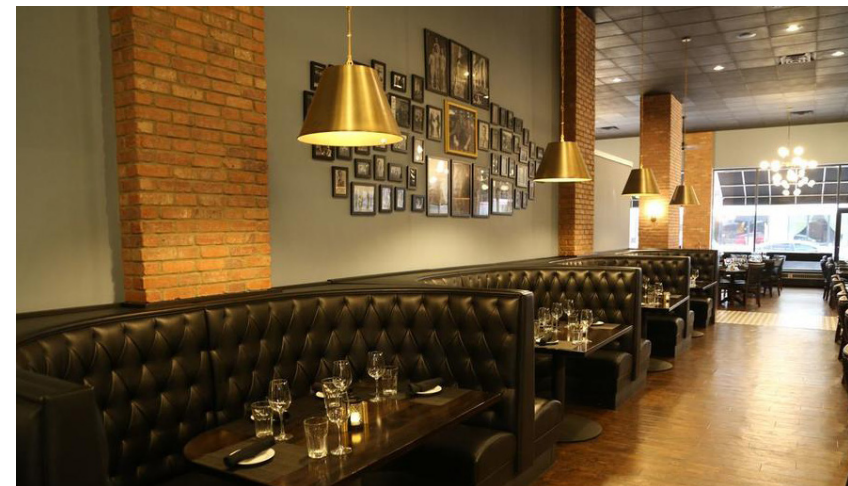
Try out yoga under  
the GE Chandelier

**2PM**

Take your Starbucks run

**5PM**

Relax with cocktails and dinner  
at Republic Food & Drink







**CONNOR REDMAN**

*Vice President*

+1 216 525 1493

credman@crescorealestate.com



**ALEXANDER RUSSO, SIOR**

*Senior Vice President*

+1 216 525 1495

arusso@crescorealestate.com



Playhouse Square®