

[CLICK HERE TO SEE FULL 13-SITE PORTFOLIO >](#)



## JOIN THESE RETAILERS



## FORMER BANK BRANCH AVAILABLE

- Building Size: 6,149 SF with drive thru lanes
- Land Area: 0.91 Acres
- Approximately 35 parking spaces
- Large free standing pylon sign
- Asking Price: \$625,000

**MATT SKALET**

maskalet@klnb.com | 202-420-7775

**BEN BECKER**

bbecker@klnb.com | 202-420-7773

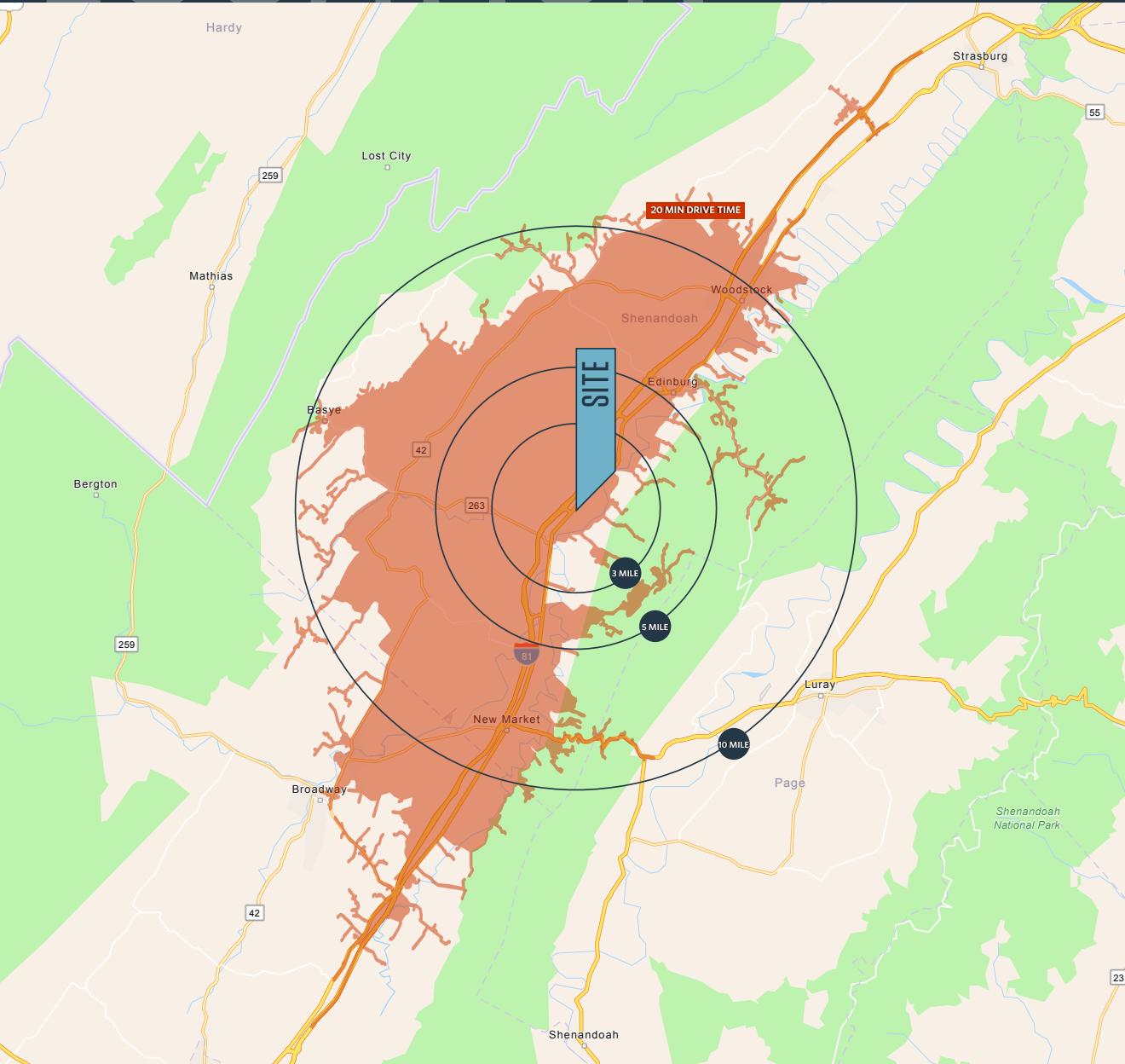
**RYAN SCHMITZ**

rschmitz@klnb.com | 202-602-1743

# LOCATION

## 5180 MAIN ST

MOUNT JACKSON, VA 22842, SHENANDOAH COUNTY



### DEMOGRAPHICS | 2023:

	3-MILE	5-MILE	10-MILE	20-MIN DRIVE TIME
Population	2,819	5,023	24,162	27,107
Daytime Population	3,040	5,106	24,062	28,577
Households	1,144	2,072	9,981	10,933
Average HH Income	\$75,917	\$81,359	\$87,036	\$84,763

### TRAFFIC COUNTS | 2022:

Main St	6,680 ADT
Conicville Rd	10,670 ADT
I-81	51,470 ADT

**MATT SKALET**

maskalet@klnb.com | 202-420-7775

**BEN BECKER**

bbecker@klnb.com | 202-420-7773

**RYAN SCHMITZ**

rschmitz@klnb.com | 202-602-1743



# 5180 MAIN ST

MOUNT JACKSON, VA 22842, SHENANDOAH COUNTY

Mount Jackson  
Shenandoah County | Virginia

## kl**nb**

- Google Earth Pro -  
2018 Aerial Photograph  
While we have no reason to doubt the accuracy of  
any of the information supplied, we cannot  
and do not guarantee its accuracy.



**SITE**  
**5180 MAIN ST**

**MATT SKALET**

maskalet@kl**nb**.com | 202-420-7775

**BEN BECKER**

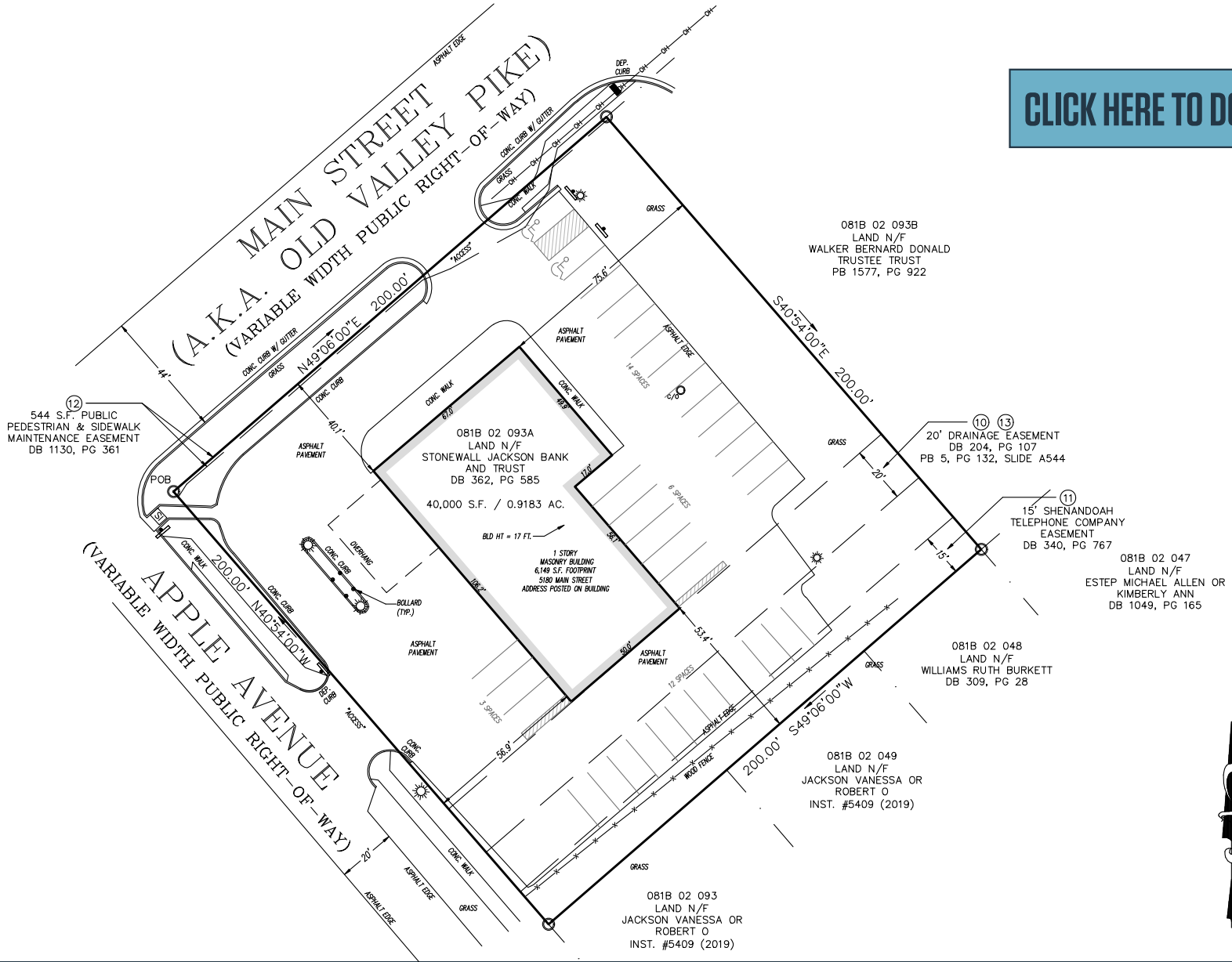
bbecker@kl**nb**.com | 202-420-7773

**RYAN SCHMITZ**

rschmitz@kl**nb**.com | 202-602-1743

# kl**nb**

[CLICK HERE TO DOWNLOAD SURVEY](#)





# 5180 MAIN ST

MOUNT JACKSON, VA 22842, SHENANDOAH COUNTY

## FOR MORE INFORMATION, PLEASE CONTACT:

**MATT SKALET**

[mskalet@klnb.com](mailto:maskalet@klnb.com)

202-420-7775

**BEN BECKER**

[bbecker@klnb.com](mailto:bbecker@klnb.com)

202-420-7773

**RYAN SCHMITZ**

[rschmitz@klnb.com](mailto:rschmitz@klnb.com)

202-602-1743

1130 Connecticut Ave, NW, Suite 600, Washington, DC 20036

.....

## klnb.com



[instagram.com/klnbcre](https://www.instagram.com/klnbcre)



[linkedin.com/company/klnb](https://www.linkedin.com/company/klnb)



[facebook.com/KLNBCRE](https://www.facebook.com/KLNBCRE)

**CLICK TO VIEW PROPERTY WEBSITE**

While we have no reason to doubt the accuracy of any of the information supplied, we cannot, and do not, guarantee its accuracy. All information should be independently verified prior to a purchase or lease of the property. We are not responsible for errors, omissions, misuse, or misinterpretation of information contained herein and make no warranty of any kind, express or implied, with respect to the property or any other matters.