

FOR SALE

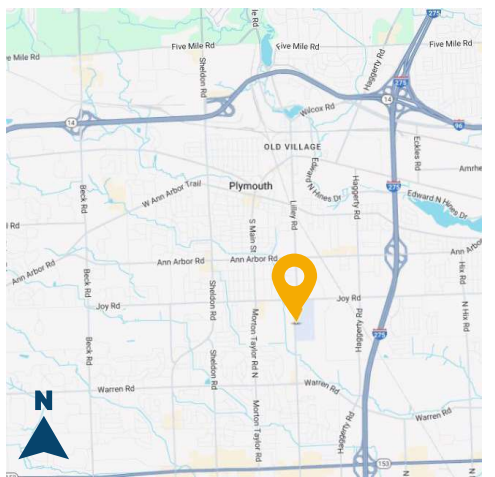
8400 N LILLEY RD, CANTON



RH COMMERCIAL
REALTY



INDUSTRIAL BUILDING, EQUIPMENT, AND LICENSES FOR SALE PERFECT FOR AUTOMOTIVE RELATED USES



PROPERTY DETAILS

- Excellent 11,950 SF industrial building with approximately 800 SF of office
- Salvage License and Dealer's License included with sale
- Equipment, including paint booth, compressors and lines, hoists, and more, included with sale
- (5) grade level drive-in loading doors
- Heavy power power brought to the building
- Rare opportunity for plug and play automotive user
- Ideally located minutes from I-275, I-96, M-14, and surrounding major freeways

For information, please contact:



NATE HUGHES

810.923.6099

nate@rhcommercial.net

REECE HUGHES

248.207.5847

reece@rhcommercial.net

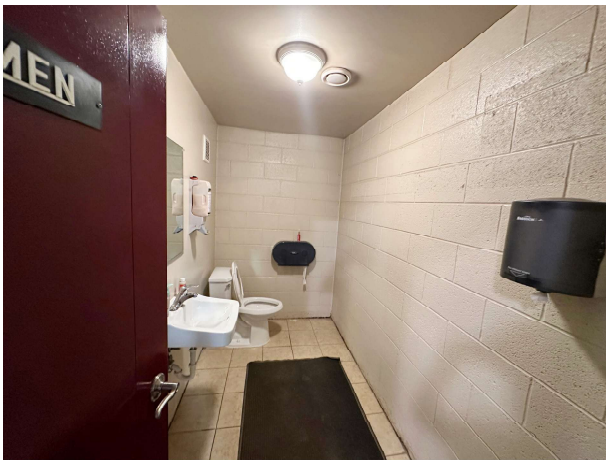
ROB HUGHES

248.505.0399

rob@rhcommercial.net

FOR SALE

8400 N LILLEY RD, CANTON



For information, please contact:



NATE HUGHES

810.923.6099

nate@rhcommercial.net

REECE HUGHES

248.207.5847

reece@rhcommercial.net

ROB HUGHES

248.505.0399

rob@rhcommercial.net

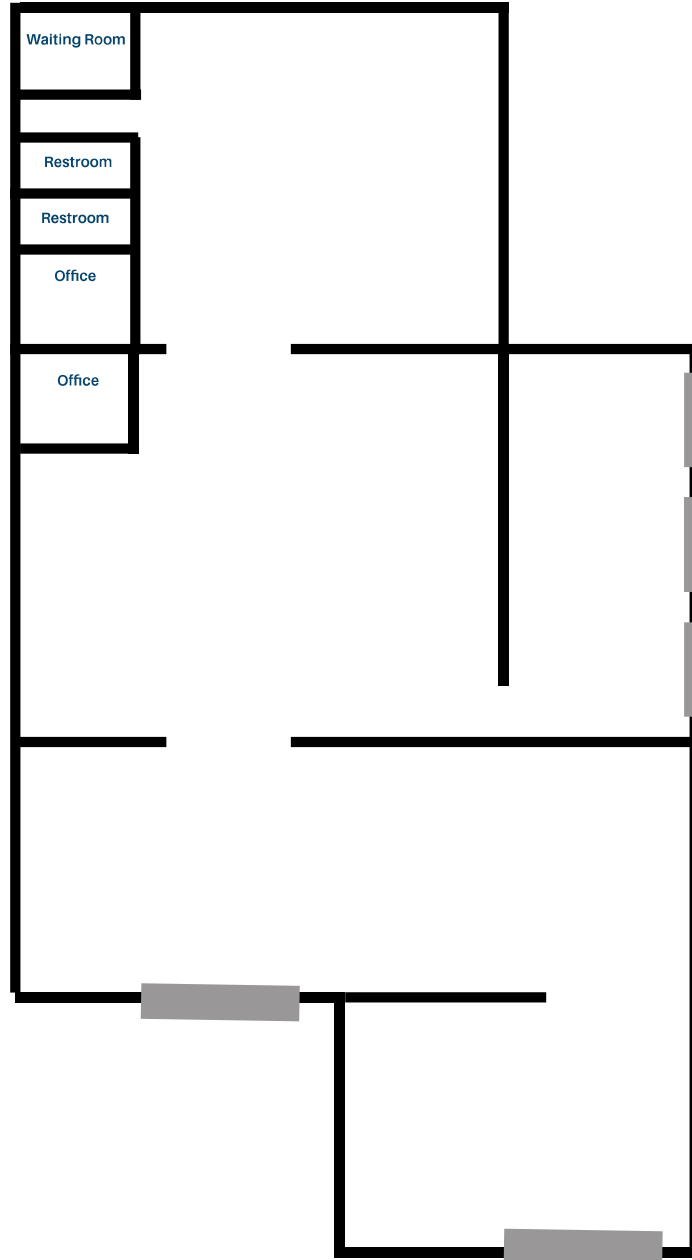
FOR SALE

8400 N LILLEY RD, CANTON



FLOOR PLAN SKETCH

(NOT TO SCALE)



For information, please contact:



NATE HUGHES

810.923.6099

nate@rhcommercial.net

REECE HUGHES

248.207.5847

reece@rhcommercial.net

ROB HUGHES

248.505.0399

rob@rhcommercial.net

FOR SALE

8400 N LILLEY RD, CANTON



PRICING INFORMATION

Sale Price: \$2,400,000

Price per SF: \$200.84

PROPERTY DESCRIPTION

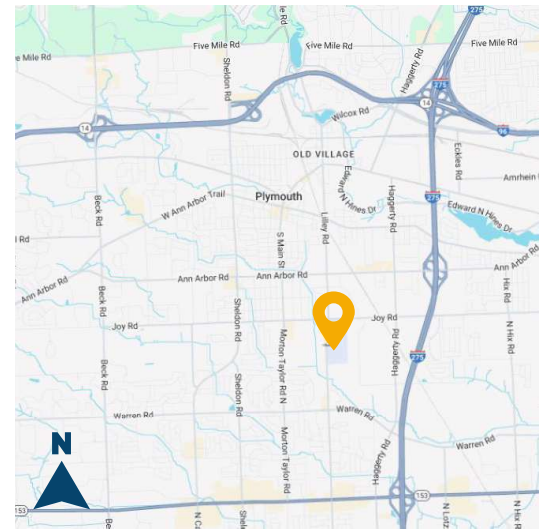
Total SF: 11,950
Office SF: 800
Property Type: Industrial
Tenancy: Single
Year Built: 1958
Year Renovated: 2011
Zoning: Industrial
Site/Parcel Area: 1.38 AC

Parcel ID: Available
Parking Spaces: Abundant
Rail Served: No
Cranes: No
Heat: Radiant
Clearance: 16'
Grade/Dock Doors: 5/None
Fire Suppression: No
Power: Heavy

SUMMARY

Excellent 11,950 SF industrial building equipped with five (5) grade level drive-in loading doors, 16' clearance throughout, a paint booth and other equipment, and heavy power. Frontage and signage on N Lilley Rd. Roof replaced in 2011, including all metal roof decking and insulation. Rare opportunity for a plug and play automotive user with a Class C-Salvage license and Class B Dealer's license included with the sale.

ROAD MAP



For information, please contact:



NATE HUGHES

810.923.6099

nate@rhcommercial.net

REECE HUGHES

248.207.5847

reece@rhcommercial.net

ROB HUGHES

248.505.0399

rob@rhcommercial.net