

LIMERICK MEDICAL BUILDING

649 North Lewis Road | Royersford, PA 19468

For Lease



Property Overview

Available
6,222 SF

Limerick Medical Building is located just outside of Philadelphia and is an exceptional location for medical and office users in Montgomery County and the surrounding Western Suburbs. The property is located directly across from the Phoenixville Hospital Outpatient and Surgery Center, providing great synergy for medical office tenants. Limerick Medical Building is just off Route 422, minutes from US Route 202 and Interstate-76.

1000 Germantown Pike, Suite A-2 | Plymouth Meeting, PA 19462 | www.PennmarkProperties.com | 610-272-6500 x126

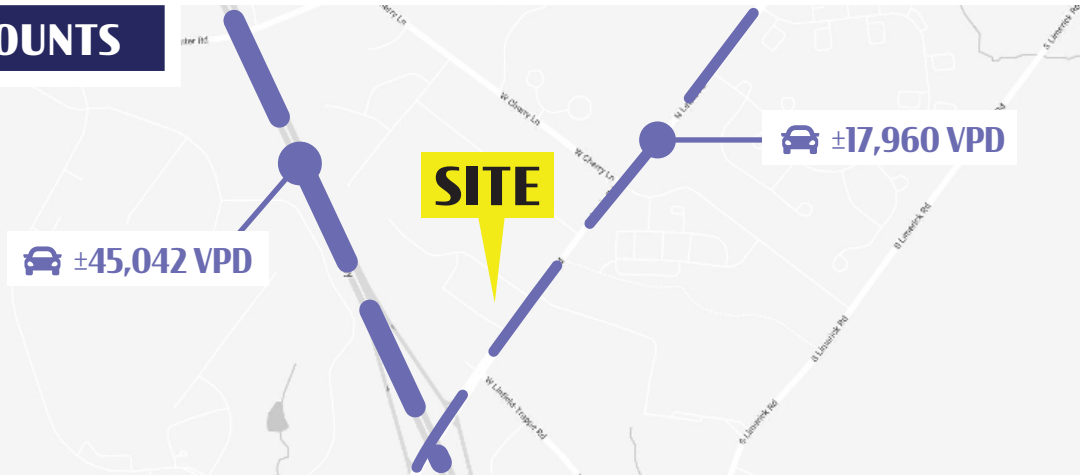


LIMERICK MEDICAL BUILDING

649 North Lewis Road | Royersford, PA 19468

For Lease

ROAD COUNTS



DEMOGRAPHICS	1 MILE	5 MILE	10 MILE
TOTAL POPULATION	5,059	95,260	302,611
TOTAL EMPLOYEES	2,474	40,527	112,645
AVERAGE HHI	\$108,055	\$122,215	\$127,042
TOTAL HOUSEHOLDS	1,951	35,100	113,474



1000 Germantown Pike, Suite A-2 | Plymouth Meeting, PA 19462 | www.PennmarkProperties.com | 610-272-6500 x126

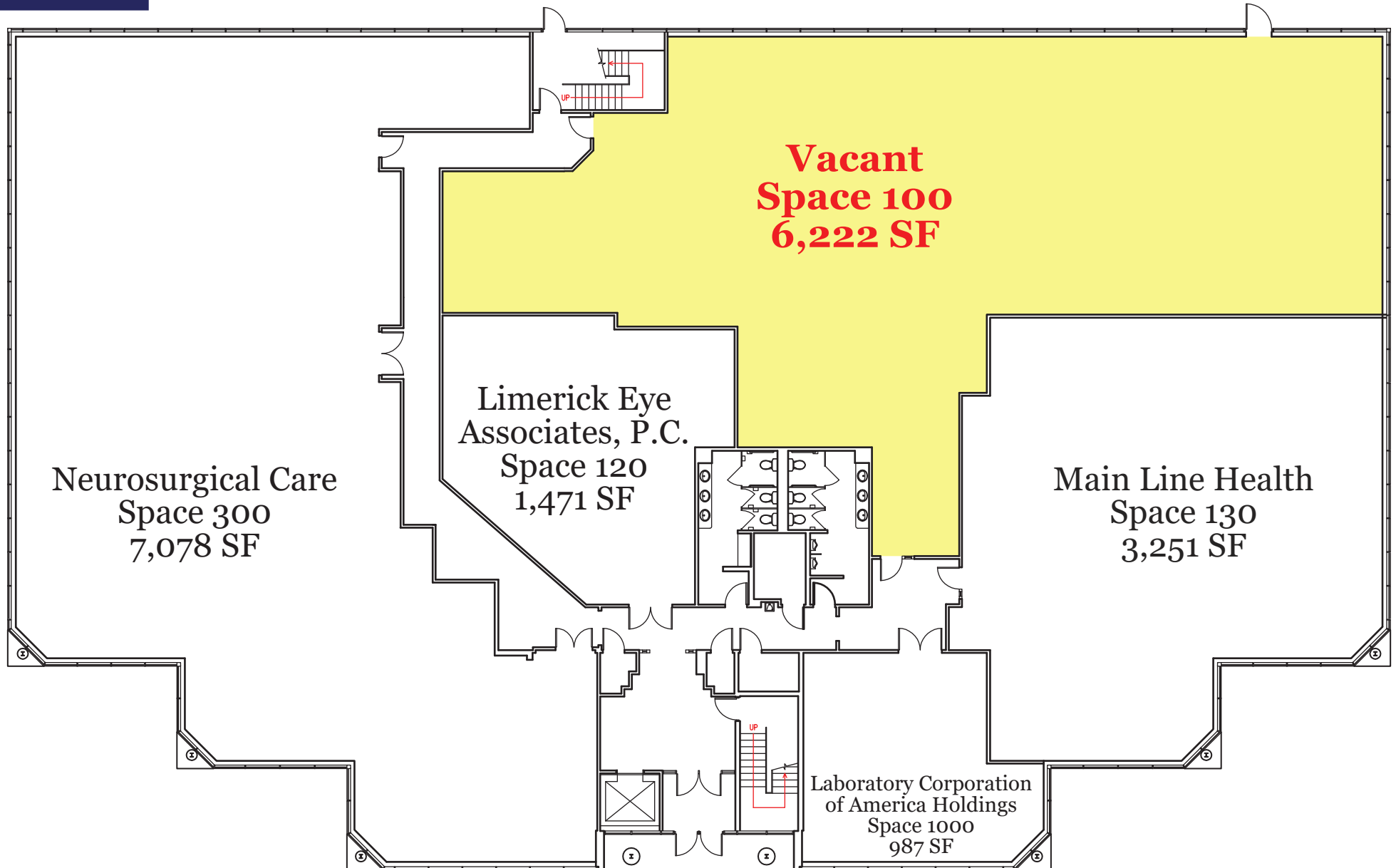


LIMERICK MEDICAL BUILDING

649 North Lewis Road | Royersford, PA 19468

For Lease

SITE PLAN

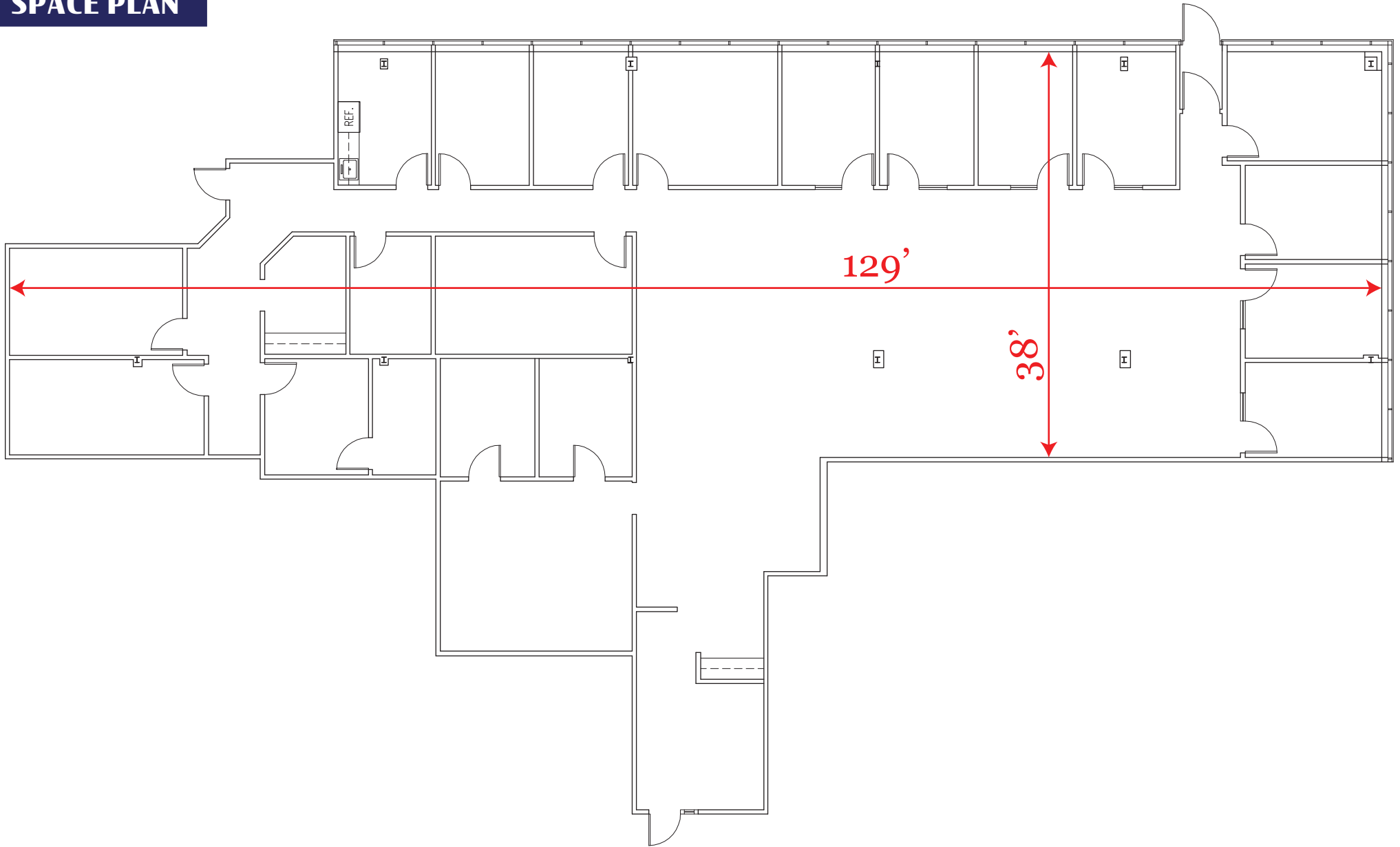


LIMERICK MEDICAL BUILDING

649 North Lewis Road | Royersford, PA 19468

For Lease

SPACE PLAN



LIMERICK MEDICAL BUILDING

649 North Lewis Road | Royersford, PA 19468

For Lease



1000 Germantown Pike, Suite A-2 | Plymouth Meeting, PA 19462 | www.PennmarkProperties.com | 610-272-6500 x126

