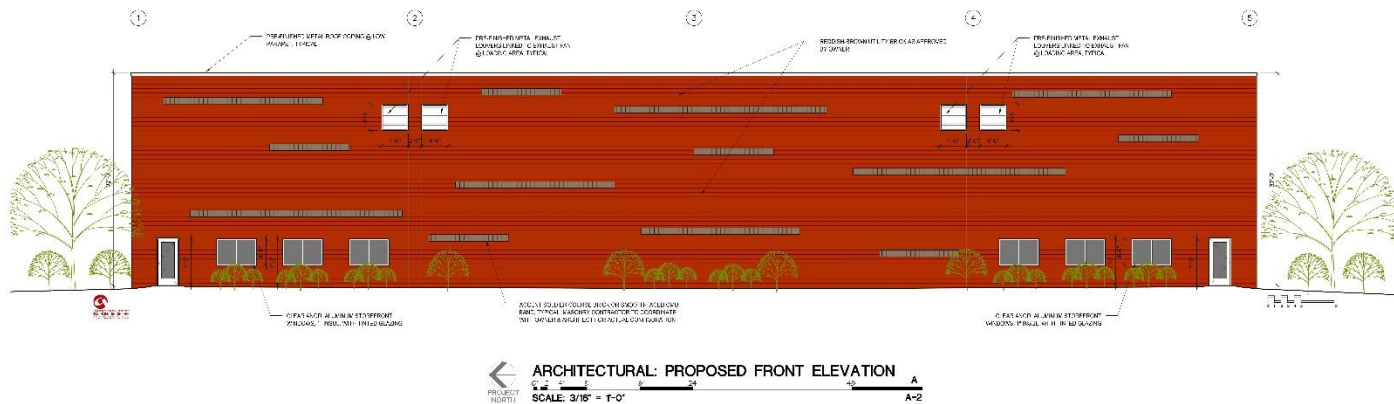


<7 Miles from Norfolk <24 Miles from Virginia Beach <45 Miles from Williamsburg



ARCHITECTURAL: PROPOSED FRONT ELEVATION
 SCALE: 3/16" = 1'-0"

FOR LEASE

Available December 2025

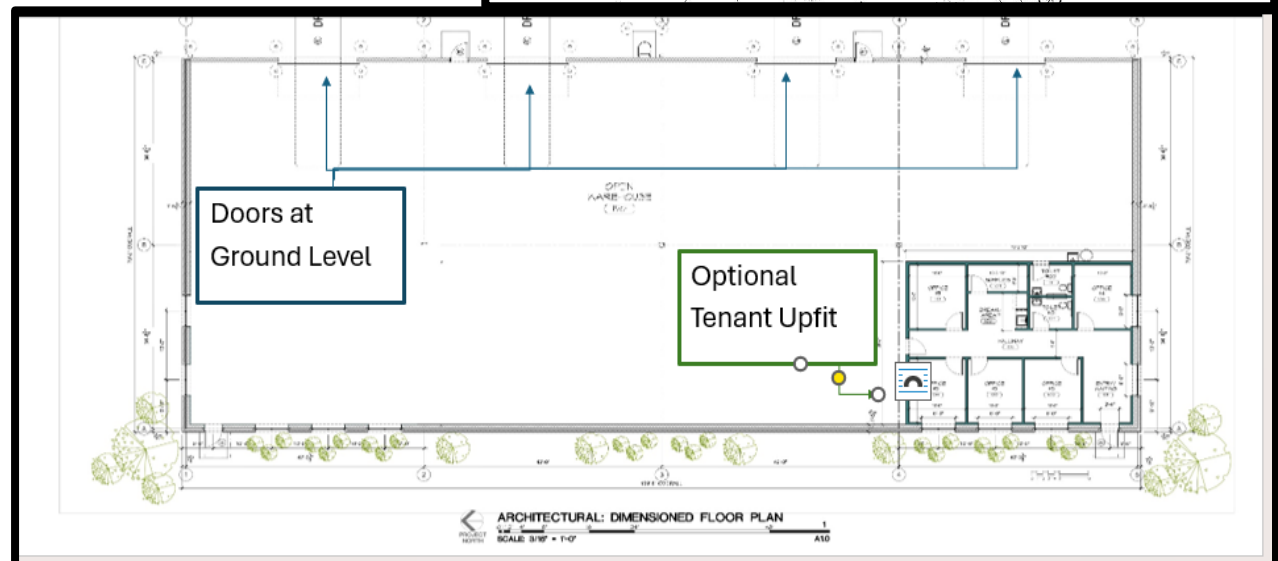
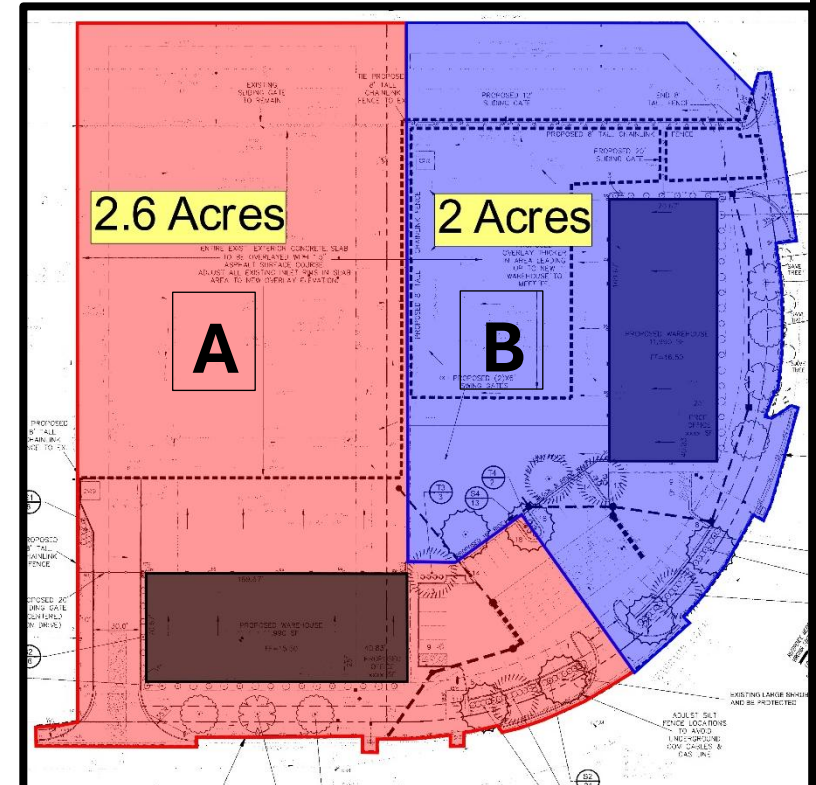
Parcel A

- 2.6 Acres
- 11,990 Sf
- Office/ Warehouse
 - Tenant Upfit Available
- Lighted, Paved, Fenced
- 20 Space Parking Lot

Parcel B

- 2 Acres
- 11,990 Sf
- Office/ Warehouse
 - Tenant Upfit Available
- Lighted, Paved, Fenced
- 20 Space Parking Lot

4000 Seaboard Court, Portsmouth,
VA 23701



- Term: Negotiable
- Price: Call
- Lease Type: NNN

Contact: Alexander L. Brown

Phone: (804)-694-7328

Email:

alexanderb.management@gmail.com