



West Hempstead, NY

Nassau County

Cherry Valley Plaza

a foundation for nearly 100 years



Location: NE Corner of Hempstead Turnpike & Cherry Valley Ave., 456-488 Hempstead Tpk., West Hempstead, NY

Description: Neighborhood Strip Center

Major Tenants: Pet Supplies "Plus", Umi Hot Pot Buffet, Tropical Smoothie, European Wax Center

GLA: 34,681 sf ±

Parking: 117 grade level spaces, 48 lower level spaces

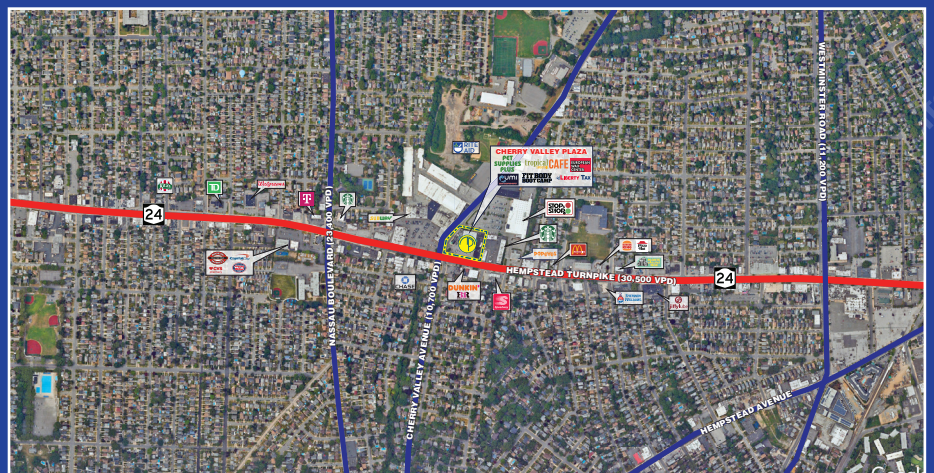
Demographics:

2024	1 Mile	3 Miles	5 Miles
Population	26,076	256,461	701,072
Average HH Income	\$150,659	\$129,679	\$124,431
Total HH	8,360	78,746	221,614
Median Age	41.7	40.4	41.9



MILBROOK PROPERTIES LTD.
 CHARLES HIRSCH, PRESIDENT
 CHIRSCH@MILBROOKPROPERTIES.COM
 T (516) 869-1240
 F (516) 869-8576

42 BAYVIEW AVENUE, MANHASSET, NY 11030
 WWW.MILBROOKPROPERTIES.COM



West Hempstead, NY

Nassau County

Cherry Valley Plaza



Store	Addr.	Tenant	Dimensions	Size
1. }	486	Jewelry	(36' x 80' irr.)	1,440 sf
2. }				
3.	482	Available	(8'-2" x 40')	325 sf
4.	480	Taco King	(40' x 45'-7")	1,825 sf
5A.	456	Kickboxing	(19'-7" x 58'-4" irr.)	2,159 sf
5B.	458	European Wax Center	(29'-6" x 68'-4" irr.)	1,841 sf
6.	476	Fit Body Boot Camp	(40' x 68')	2,720 sf
6A.	474	Tropical Smoothie	(32.5' x 68')	2,210 sf
7. }	472	Umi Hot Pot Buffet	(122' x 64' irr.)	7,457 sf
8. }			(23'-6" x 67')	1,575 sf
9.	468	Lebanese Restaurant	(22'-6" x 70')	1,575 sf
10.	466	Pending Availability	(19'-7" x 70')	1,370 sf
11.	464	Nails	(17'-7" x 70')	1,237 sf
12.	462	Liberty Tax Services	(15' x 70')	1,050 sf
13.	458	Pet Supplies "Plus"	(70' x 107')	7,500 sf
14.		Garage		48 cars

*all store addresses are located on Hempstead Turnpike
the above dimensions are for illustrative purposes only*

For information contact:

Charles Hirsch
 President
 Milbrook Properties Ltd.
 42 Bayview Avenue
 Manhasset, NY 11030
 Email: chirsch@milbrookproperties.com
 Tel: (516) 869-1240
 Fax: (516) 869-8576

