

## LOCAL RESOURCES



### Plainview-Hale County Airport

The Plainview Hale County Airport has two runways, 6,000 ft and 4,000 ft, with an expansion in the planning stages. The Airport averages 23,000 aircraft operations per year.



### WATER

10" line (provided by **City of Plainview**)



### SEWER

12" line (provided by **City of Plainview**)



### ELECTRICITY (2 Providers)

**Xcel** - Existing 3-phase along I-27 Frontage Road  
Transmission Voltage: 115 kV  
Primary Voltage: 7200/12470V  
Secondary Voltage can be provided upon request

**Lighthouse** - Existing 3-phase along Ennis Street  
Transmission Voltage: 115 kV  
Primary Voltage: 7200/12470V  
Secondary Voltage can be provided upon request



### INTERNET/FIBER (2 Providers)

**AT&T** - high-speed fiber along Business Park Drive

**Suddenlink** - high-speed fiber along Business Park Drive



### GAS

**Atmos** - Existing 2" line runs along Ennis Street. Existing 10" main line runs approximately 800 ft. north of the site and is readily available for a loop service extension to Business Park Drive when necessary.



### Rail

BNSF Railroad is adjacent to the site, and preliminary engineering has already been prepared for an extension to the Business Park.



For additional information, contact Plainview Economic Development Corporation at 806-293-8536 or visit [www.plainviewtx.org](http://www.plainviewtx.org)



## Plainview-Hale County Business Park



The Plainview Hale County Business Park is a **shovel ready site**, strategically located on Interstate 27, equidistant from Lubbock and Amarillo, and is the perfect location for your industrial or manufacturing business. Plainview and Hale County have all the resources ready to help make your project successful.

## Low Taxes

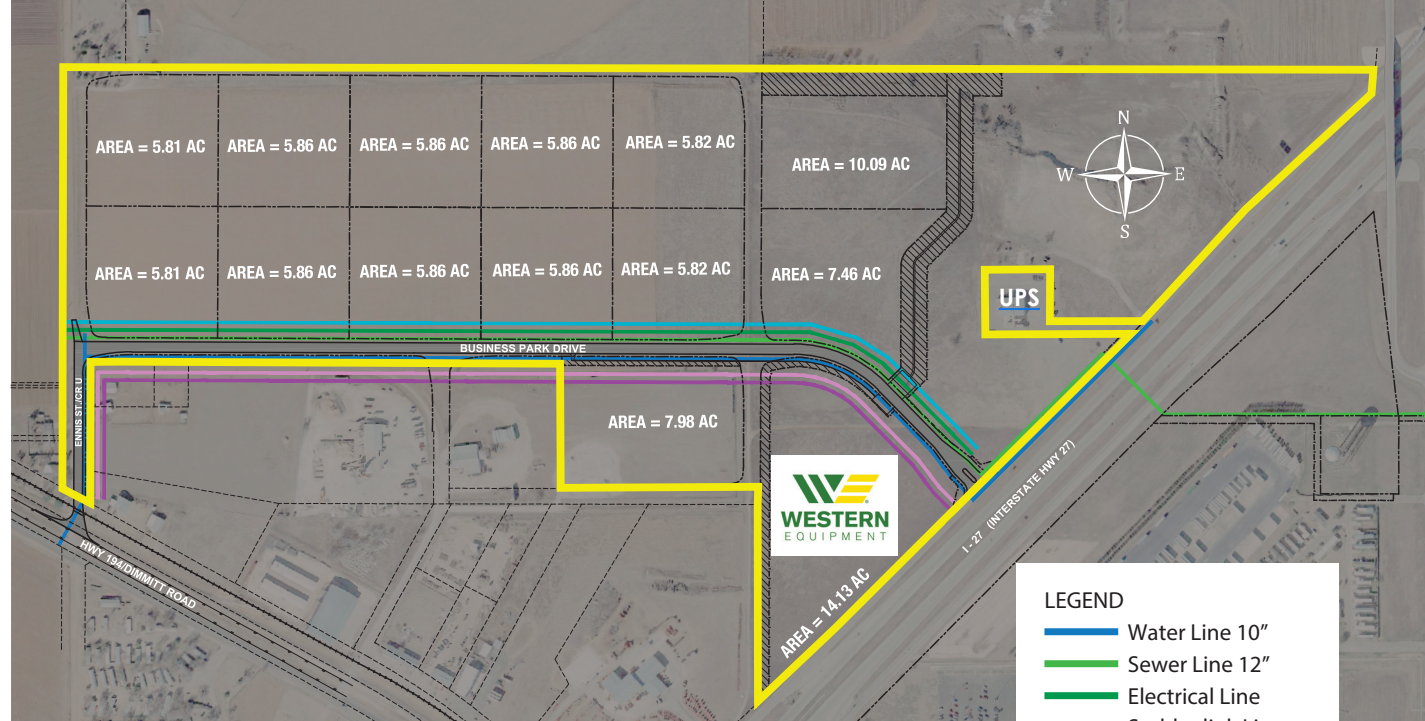
Texas is known for its business-friendly attitude and Hale County is no different! There is no personal income tax, no state property tax and local property taxes remain low compared to other areas.

## Low Development Costs

Local permitting is inexpensive, easy and quick. There are no impact fees, like you will find in larger communities. Elected officials in Plainview and Hale County are eager to grow the economy and incentive programs reflect that.

## Inexpensive Energy

Business in Plainview and Hale County enjoy electric and natural gas rates that are among the lowest in the nation, making our area an attractive operating environment for business. Utility companies are business friendly and focused on economic development. Alternative energy sources like wind, solar and ethanol are a strong presence in the region.



## Higher Education

Wayland Baptist University's enrolls 1200+ students from all over the world. The South Plains College-Plainview Campus partners with local industries to provide customized workforce training and development to our area labor force.

## Logistics

Plainview is easily accessible via Interstate 27 and Interstate 40, and is well connected by highways, air, and rail systems. The city is also part of the **Ports-to-Plains Trade Corridor**, a planned divided highway that will facilitate the transportation of goods from Mexico, through west Texas, to Canada, bringing more trade related businesses to the area.

## Experience

Plainview is home to a leading ,1.2 million sq. ft. Wal-Mart Distribution Center, Azteca Milling, Andalucia Nuts, Western Equipment, White Energy, and Martin Resources. Each of these companies chose Plainview for its location, supportive business environment, low operating costs and West Texas quality of life.

