

FOR SALE

1336 PRITCHETT INDUSTRIAL BLVD

AUSTELL, GA 30168

6.527 AC | ±3.5 AC USEABLE

CONNOR WINKLER, SIOR
Executive VP / Principal
cwinkler@lee-associates.com
O: 404.442.2803
C: 318.393.8248

CHARLIE MITCHELL
Associate
cmitchell@lee-associates.com
O: 404.781.2123
C: 404.987.1077

 **LEE & ASSOCIATES**
COMMERCIAL REAL ESTATE SERVICES

PROPERTY SUMMARY

ADDRESS

1336 Pritchett Industrial Blvd,
Austell, GA 30168

SALE PRICE

Inquire for Pricing
Ideal Owner/User
Opportunity

AVAILABILITY

6.527 AC | ±3.5 AC Useable

COUNTY

Cobb

ZONING

Heavy Industrial

OFFICE SPACE

Office trailer included in transaction

SITE COMPOSITION

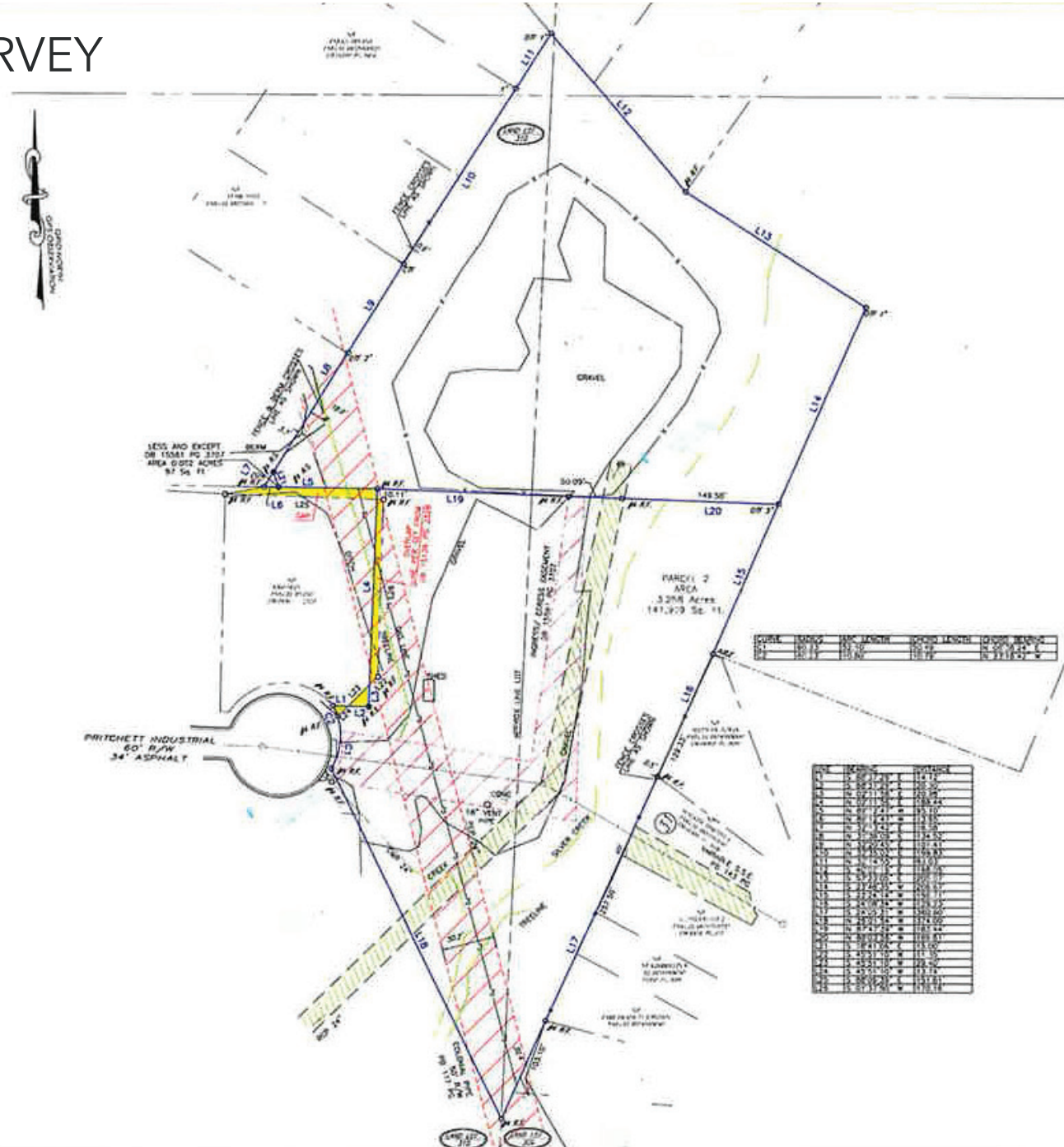
Compacted Gravel | Gated

EXPLORE THIS PROPERTY

VIRTUALLY TODAY!

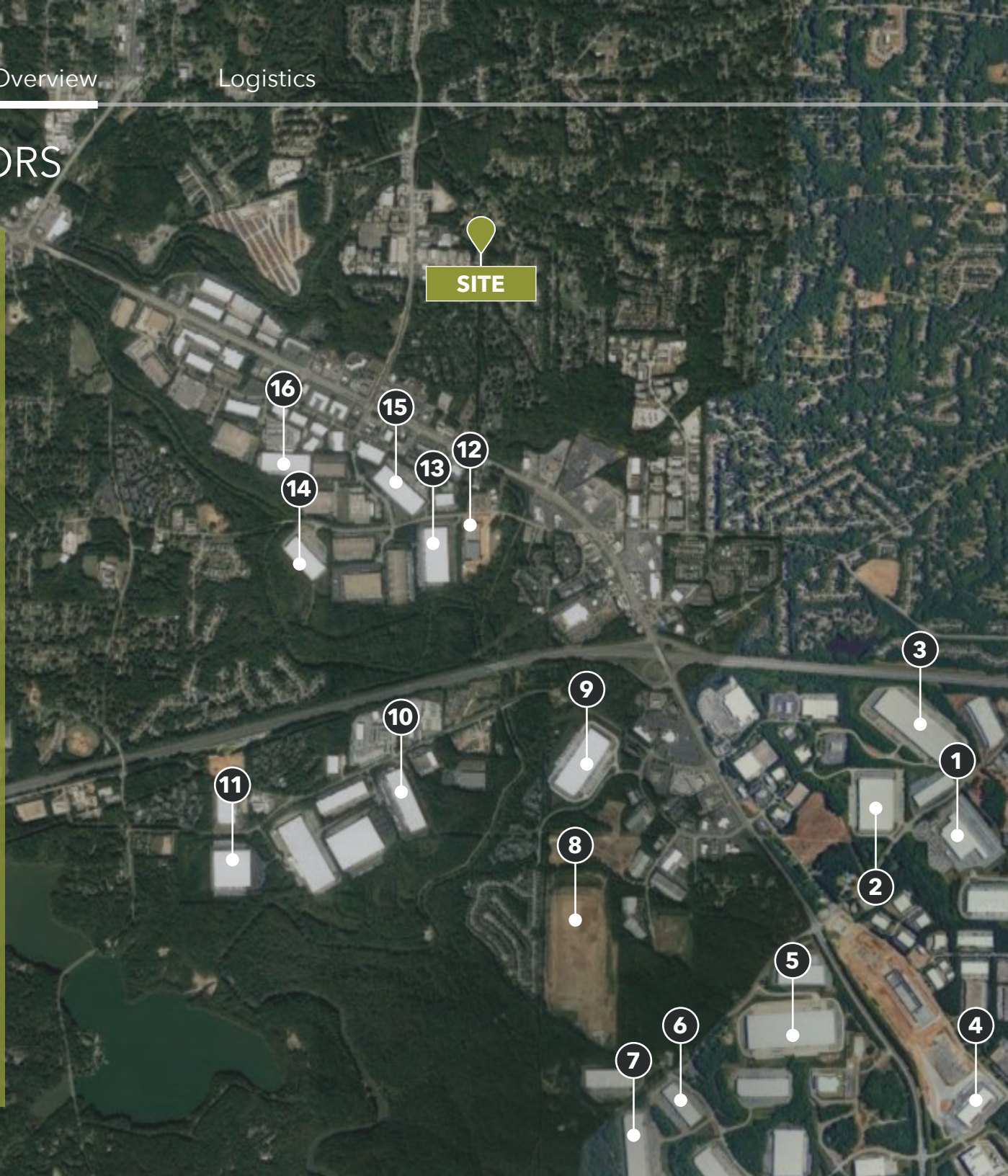


PROPERTY SURVEY



CORPORATE NEIGHBORS

1. FedEx Ground
2. Shippers Warehouse
3. ImperialDade
4. Switch
5. Stitch Fix
6. Batory Foods
7. FSI
8. Sam's Club
9. Atlanta Bonded Warehouse
10. CONMED Distribution Center
11. Staples Distribution Center
12. Home Chef
13. XPO Logistics
14. Czanowski
15. Coregistics
16. WAC Lighting - GA Plant



LOGISTICS HIGHLIGHTS



PARCEL HUBS

- FedEx Ship Center (3.0 Miles)
- UPS SMART Hub (8.2 Miles)



AIRPORTS

- Fulton County Airport (7.2 Miles)
- Hartsfield-Jackson International ATL Airport (18.3 Miles)



ACCESS POINTS

- Thornton Road (0.7 Miles)
- Fulton Industrial Blvd (6.5 Miles)
- Veterans Memorial Hwy (2.0 Miles)



INTERSTATES

- Interstate 20 (4.6 Miles)
- Interstate 285 (4.6 Miles)



RAIL

- Austell Intermodal Yard (4.6 Miles)

CONTACT

CONNOR WINKLER, SIOR
Executive VP / Principal
cwinkler@lee-associates.com
O: 404.442.2803
C: 318.393.8248

CHARLIE MITCHELL
Associate
cmitchell@lee-associates.com
O: 404.781.2123
C: 404.987.1077