

OFFICE SPACE FOR LEASE

±422 RSF AND ±1,504 RSF

1750 BRIDGEWAY
SAUSALITO | CALIFORNIA



NEWMARK

JERRY SUYDERHOUD | SENIOR MANAGING DIRECTOR

CA RE LIC #00633998 | JERRY.SUYDERHOUD@NMRK.COM | 415.526.7660

PROPERTY HIGHLIGHTS BUILDING A

SUITE A-200

- ± 1,504 RSF (\$3.50/SF/MONTH) INCLUDES INTERIOR JANITORIAL, TENANT PAYS FOR PG&E
- LARGE OPEN AREA
- ONE CORNER OFFICE
- ONE LARGER OFFICE WITH SMALLER OFFICE ATTACHED
- 4 RESERVED PARKING SPACES

- SEMIPRIVATE RESTROOMS, ONE WITH SHOWER
- HIGH CEILINGS
- SPECTACULAR VIEWS
- GREAT WINDOW LINE

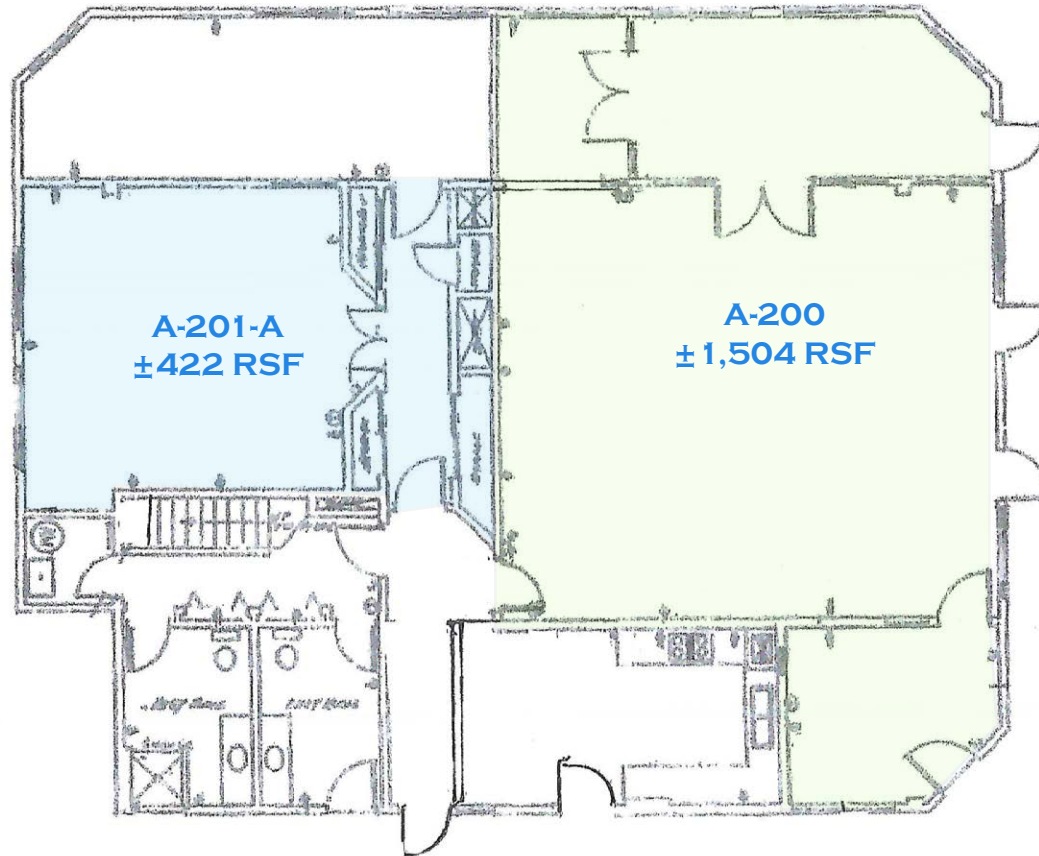
SUITE A-201A

- ± 422 RSF (\$1,950/MONTH)
- OPEN WORK AREA WITH CLOSET SPACE
- 1 RESERVED PARKING SPACE



SECOND FLOORPLAN BUILDING A

BAY



SUITE A-200: ± 1,504 RSF

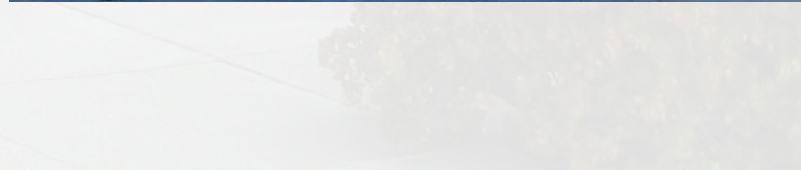
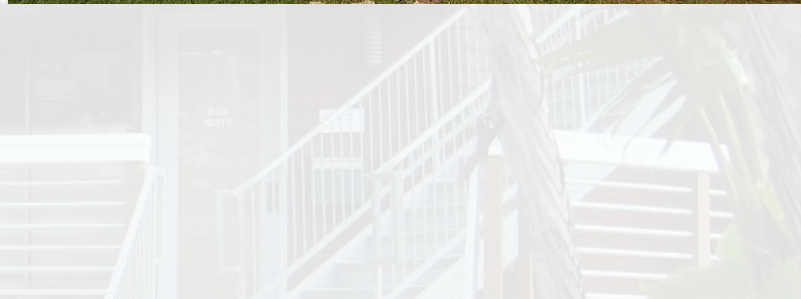
SUITE A-201-A: ± 422 RSF

1750 BRIDGEWAY

PROPERTY PHOTOS

1750 BRIDGEWAY | SAUSALITO

Newmark



PROPERTY PHOTOS

1750 BRIDGEWAY | SAUSALITO

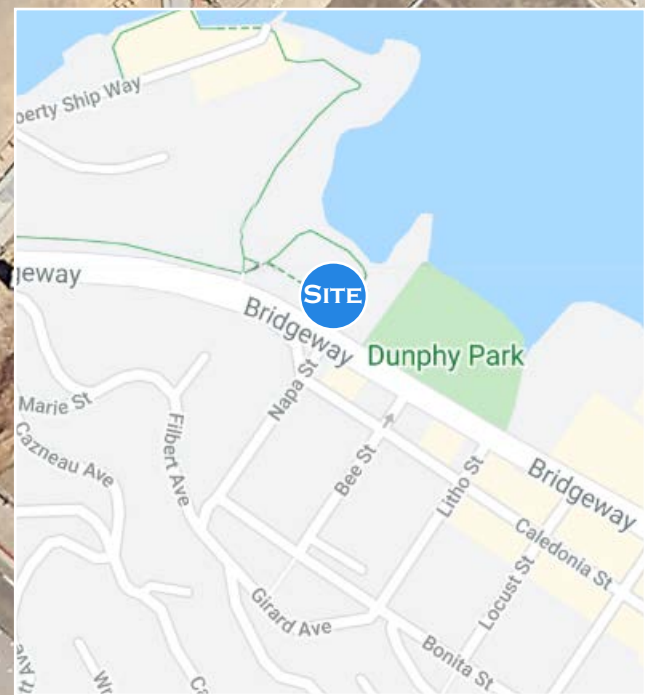


LOCATION AERIAL

SITE

Bridgeway

Napa St



OFFICE SPACE FOR LEASE

1750 BRIDGEWAY
SAUSALITO | CALIFORNIA

JERRY SUYDERHOUD
SENIOR MANAGING DIRECTOR
CA RE LIC #00633998
JERRY.SUYDERHOUD@NMRK.COM
415.526.7660

1101 FIFTH AVENUE, SUITE 370
SAN RAFAEL, CA 94901
415.526.7676

NMRK.COM

The distributor of this communication is performing acts for which a real estate license is required. The information contained herein has been obtained from sources deemed reliable but has not been verified and no guarantee, warranty or representation, either express or implied, is made with respect to such information. Terms of sale or lease and availability are subject to change or withdrawal without notice.
Last updated: March 25, 2026 12:15 PM

NEWMARK