

Class A Professional - Medical Space For Lease

100 Matawan Road | Matawan, NJ 07410

AVAILABILITIES:

- 1,200 RSF to 22,488 RSF

KEY HIGHLIGHTS

- **Location:** 100 Matawan Road, Matawan, New Jersey (Monmouth County)
- **Building Type:** Four-story, 133,678 SF, Class "A" office building
- **Ideal For:** Professional and medical office users
- **Amenities:**
 - Grab & go café
 - Private outdoor decks for some individual suites
 - Underground executive parking garage
 - Tenant spaces surrounding a 4-story, sky-lit atrium with lounge seating
- **Parking:** Ample surface parking available
- **Accessibility:**
 - Conveniently located right off Exit 120 (toll free)
 - 10 minutes south of NJ Transit Metro Park station and Matawan Station

ASKING RENT:

- Call for Pricing



Matt Miller

C | 908.770.0686
Matt@legacyrealtynj.com

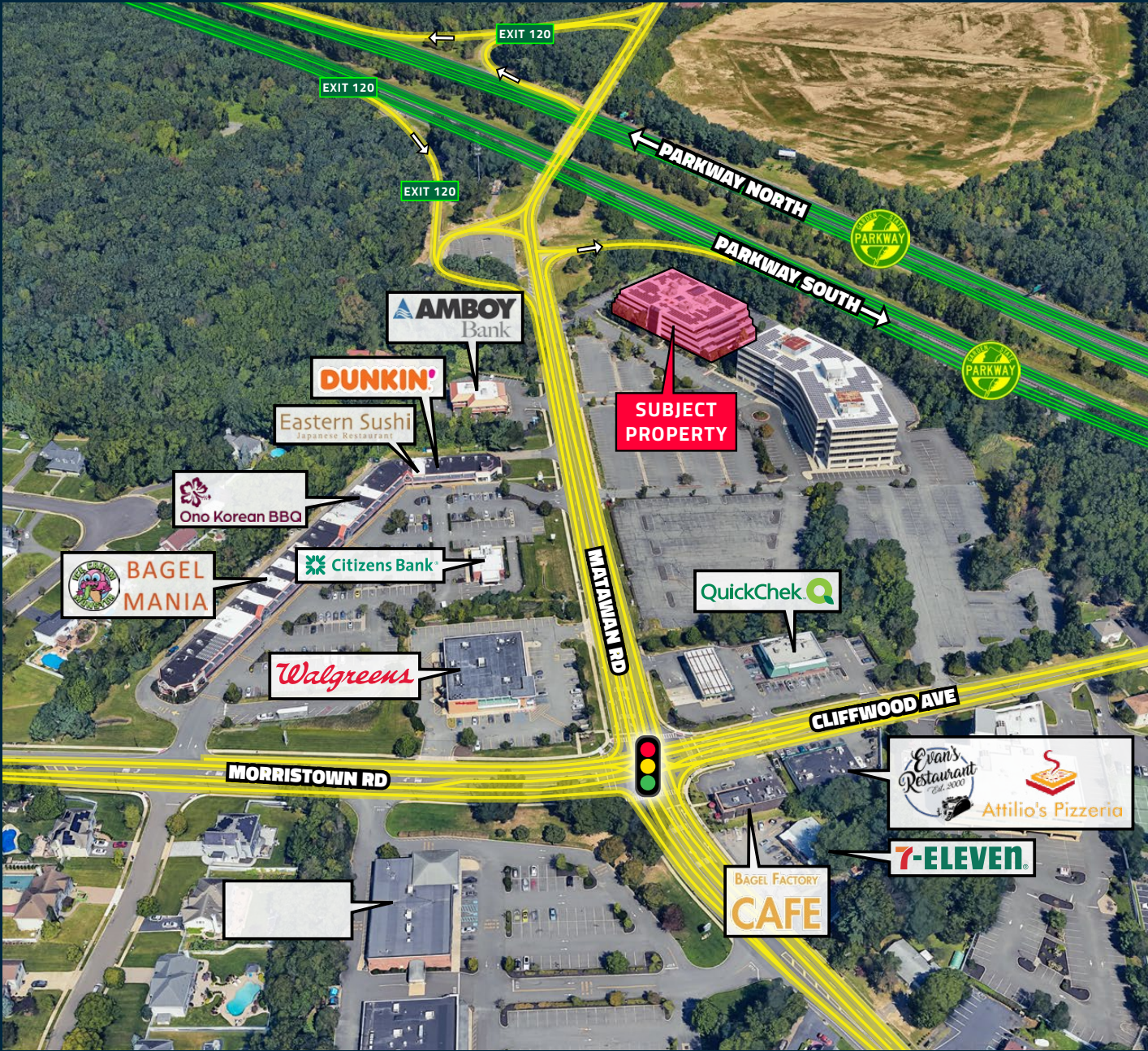
Logan Gurtman

C | 908.692.9890
Logan@legacyrealtynj.com

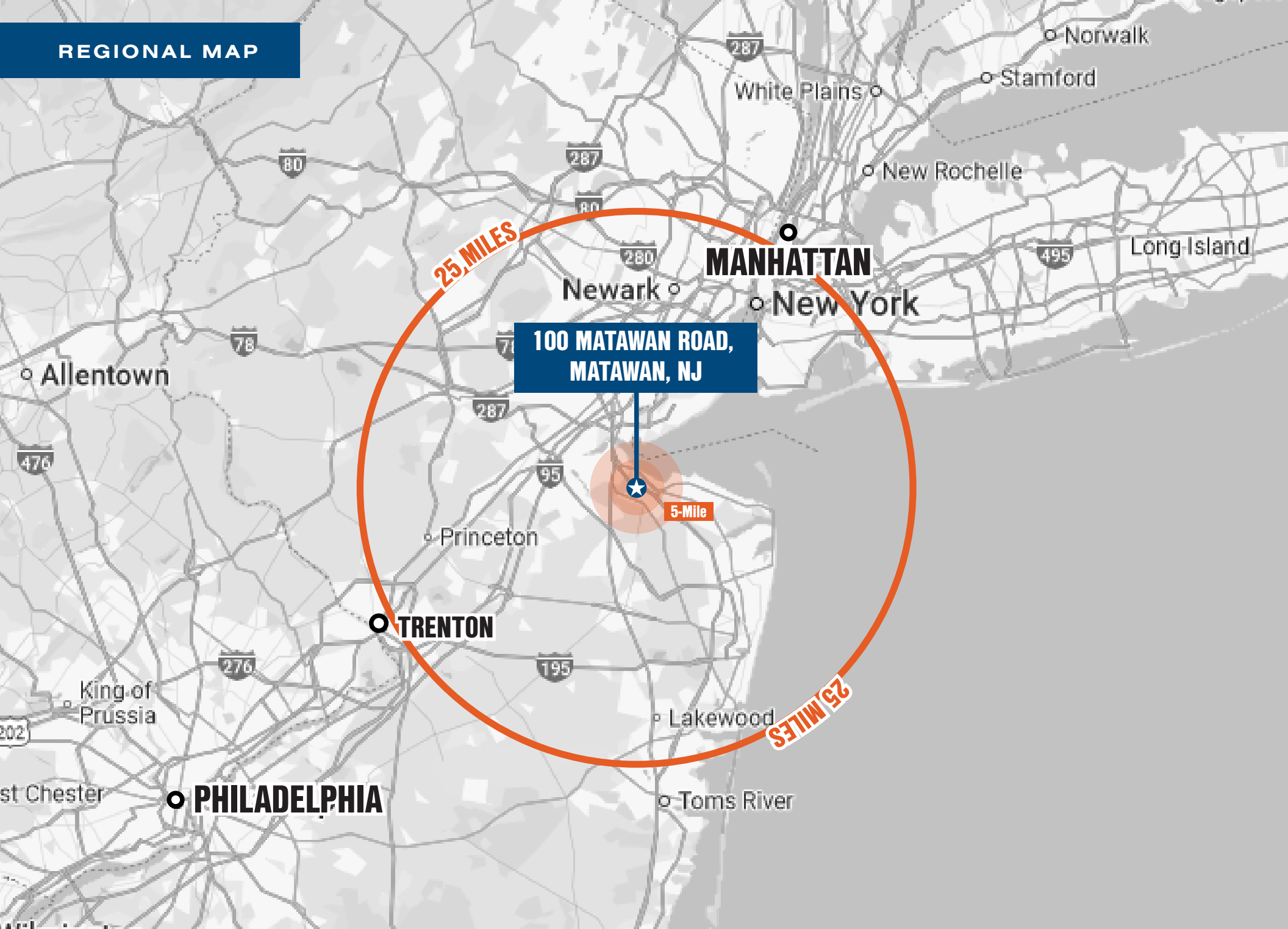
Seth Katz

C | 908.770.7111
Seth@legacyrealtynj.com

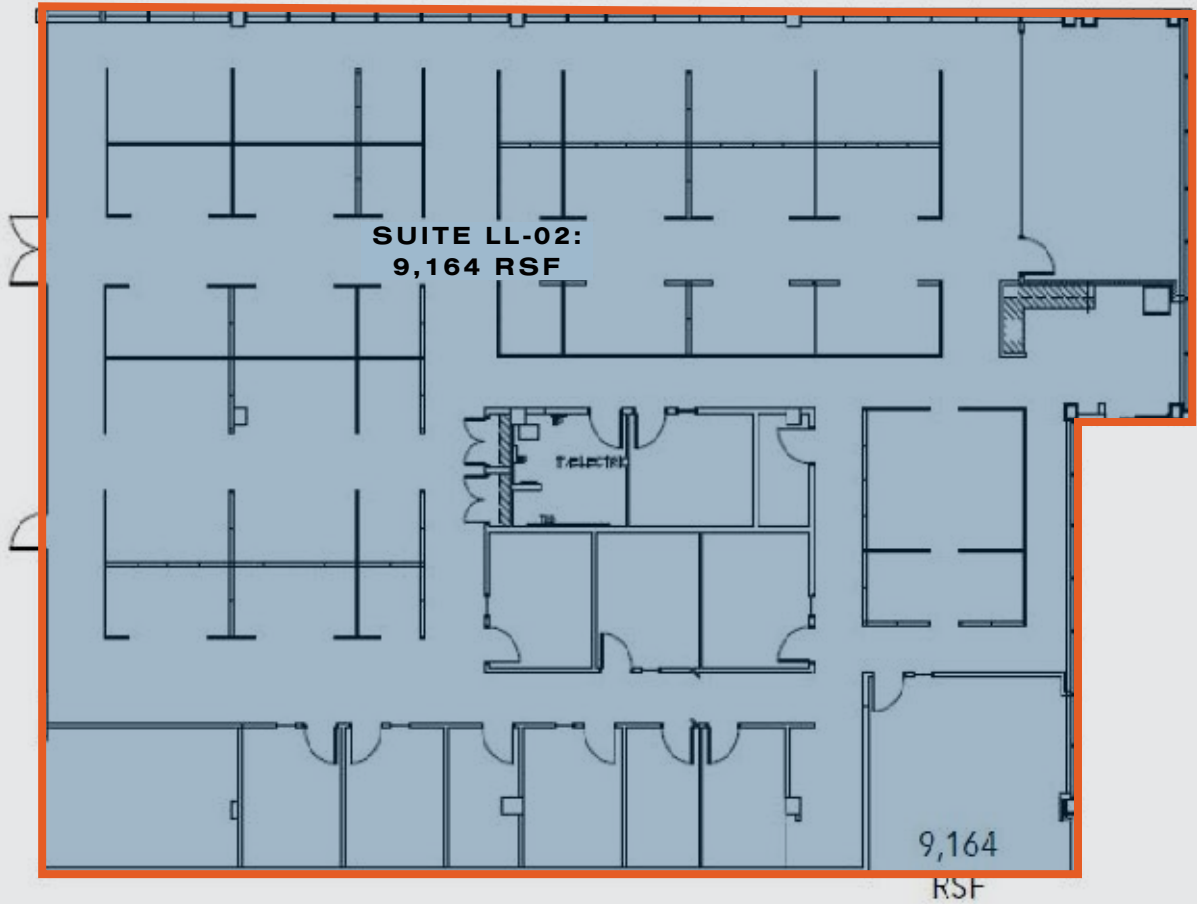
AERIAL VIEW



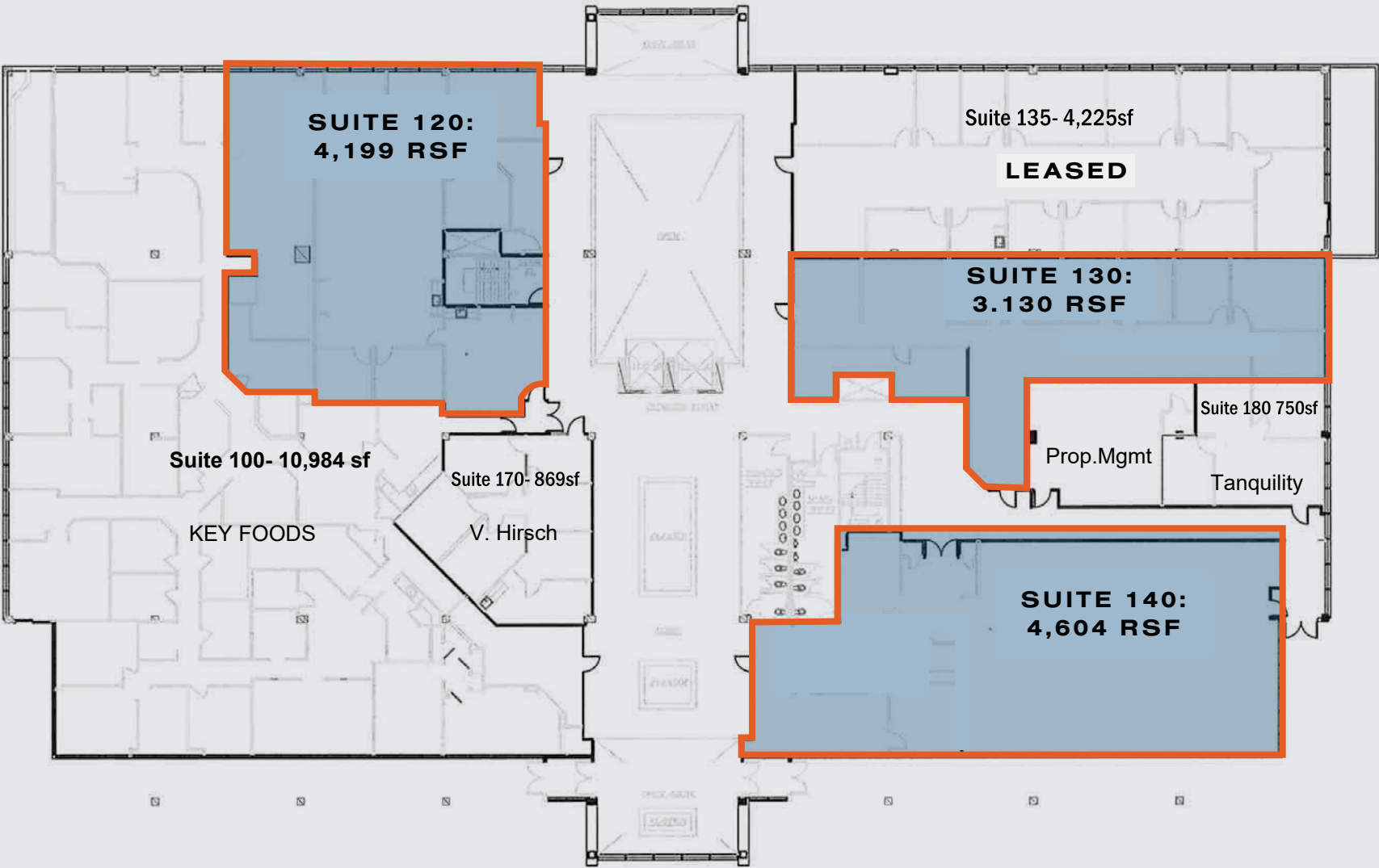
REGIONAL MAP



FLOOR PLAN - LL FLOOR



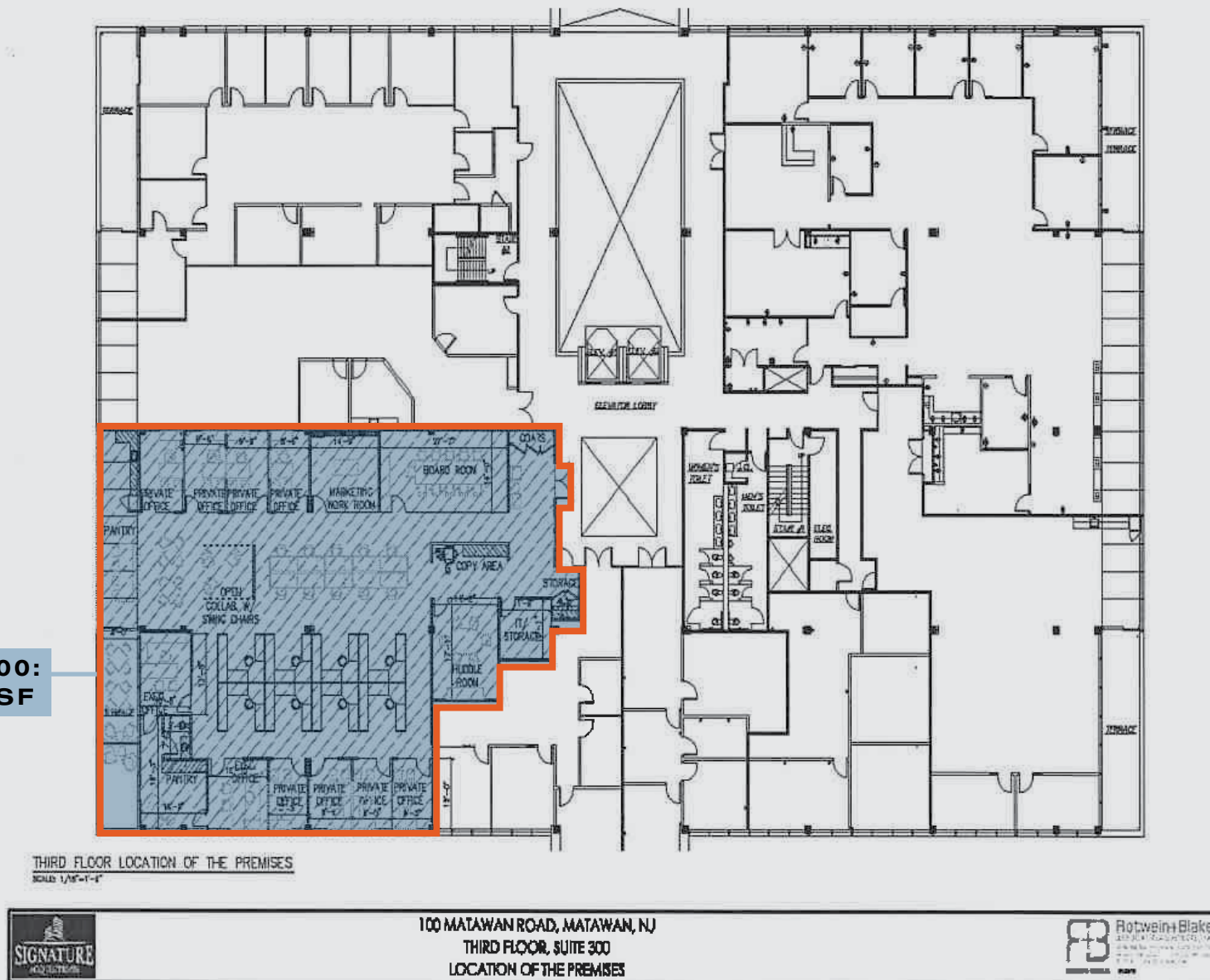
FLOOR PLAN - 1ST FLOOR



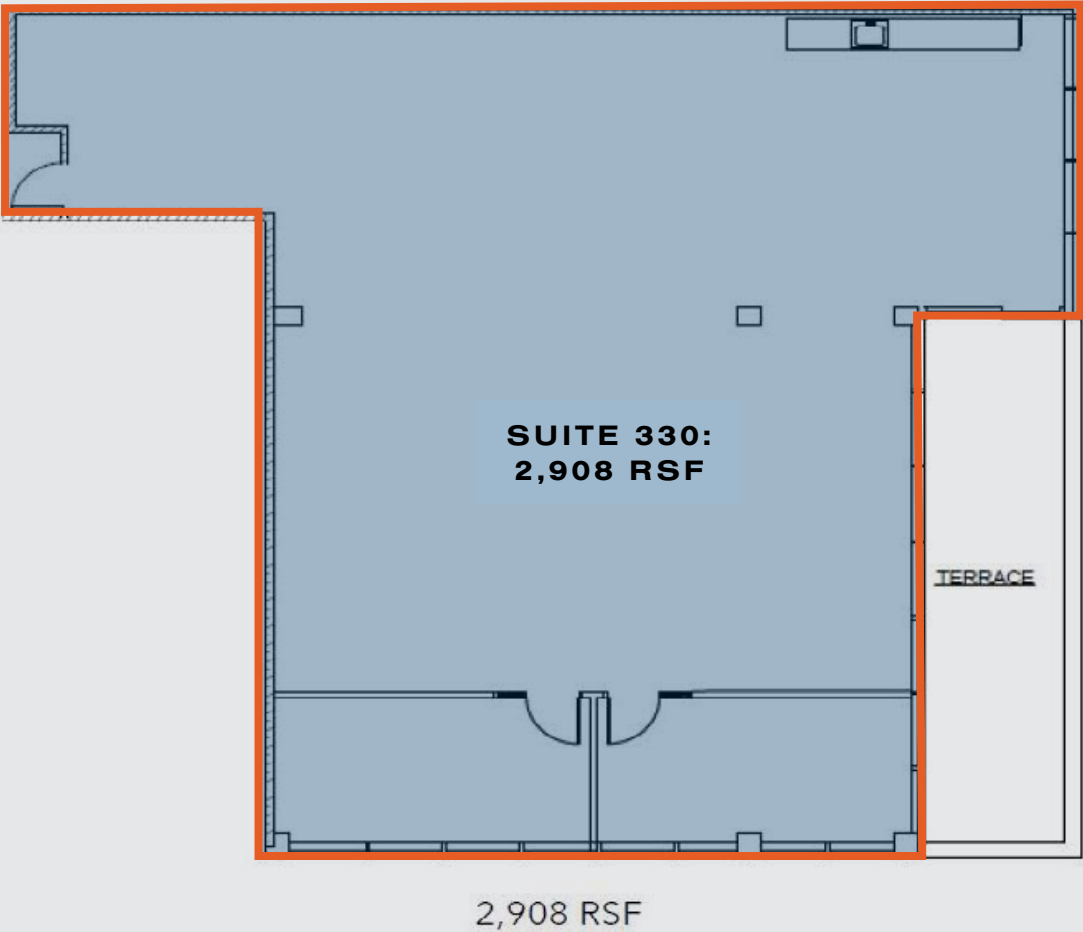
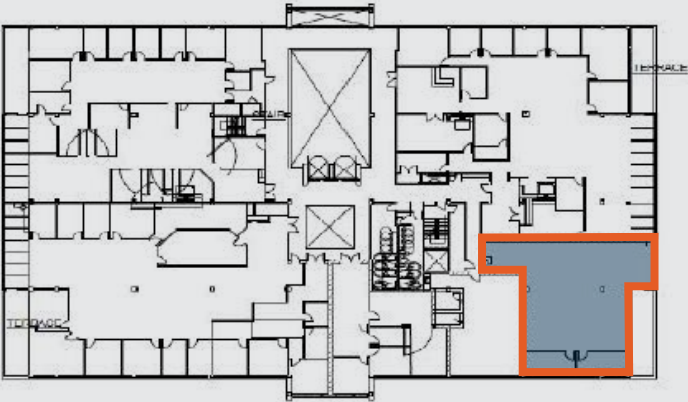
FLOOR PLAN - SUITE 300

Exhibit A

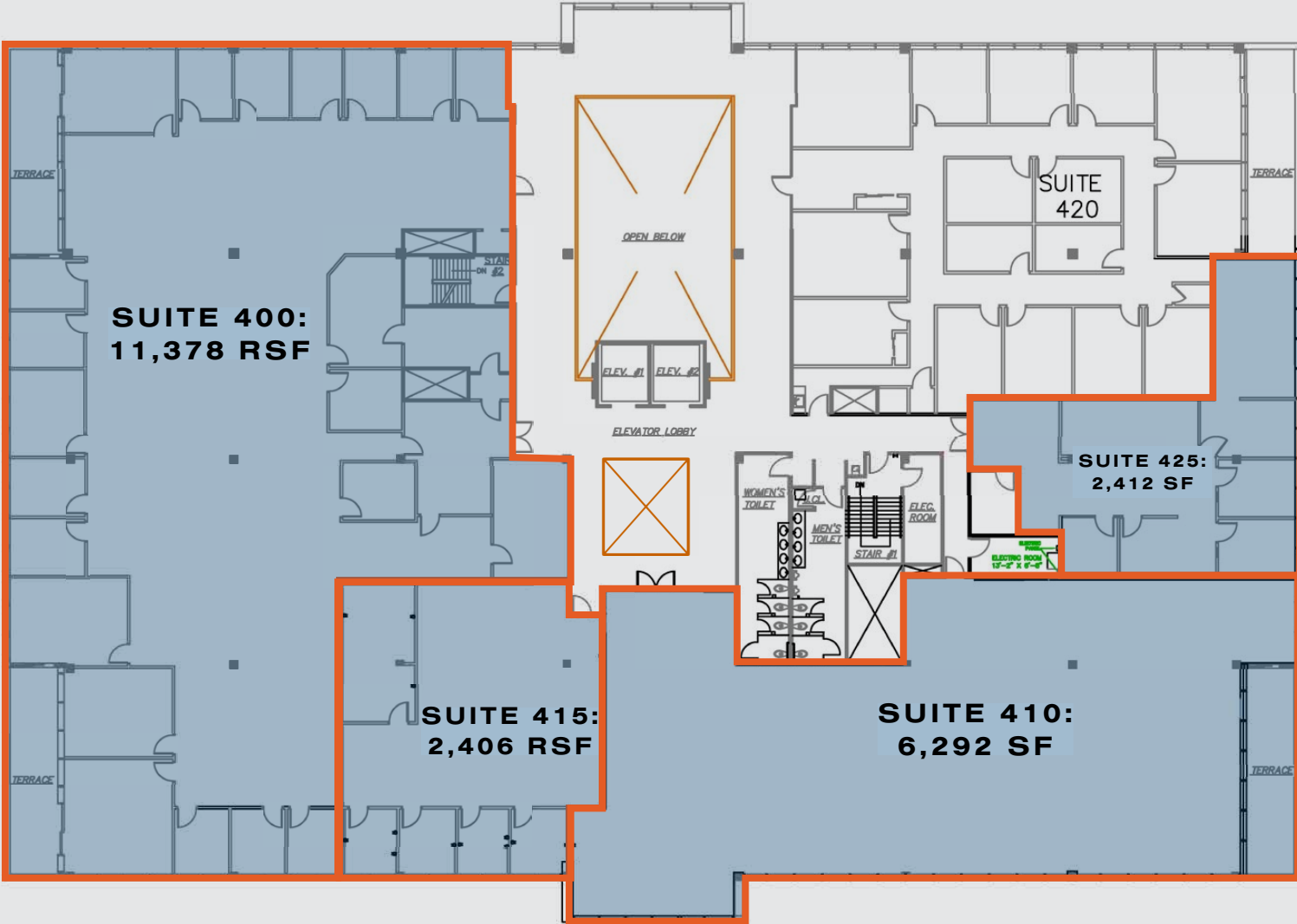
SUITE 300:
7,319 RSF



Tenant acknowledges and agrees that Exhibit A is not a representation that the Premises are precisely of the dimensions or shapes as shown, it being the intention of the parties only that Exhibit A show diagrammatically, rather than precisely, the layout of the Premises.

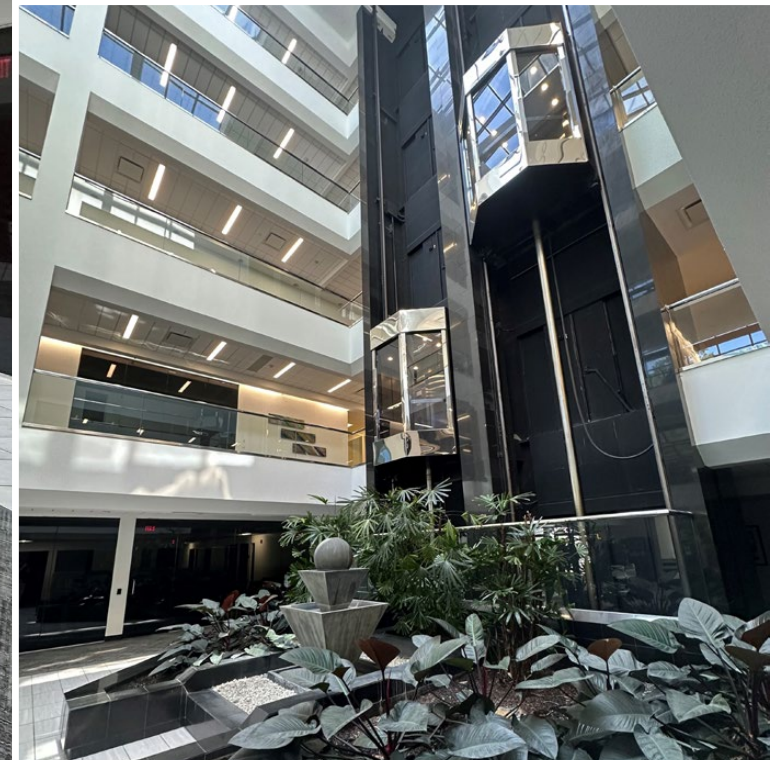


FLOOR PLAN - 4TH FLOOR



ALL UNITS
CAN BE COMBINED
(22,488 RSF TOTAL)

INTERIOR PHOTOGRAPHY



EXTERIOR PHOTOGRAPHY



100 MATAWAN ROAD, MATAWAN, NEW JERSEY