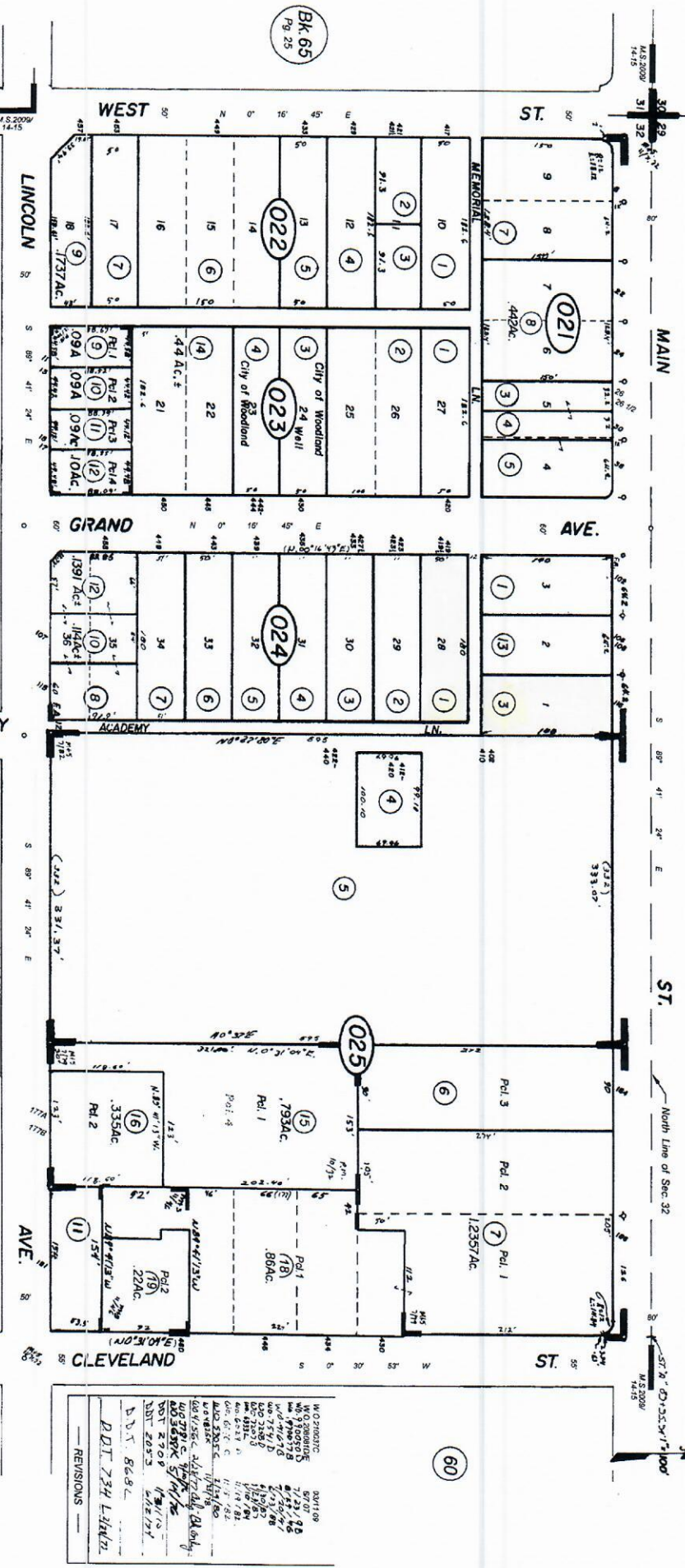


Bk. 5
Pg. 67

CAUTION - These Maps ARE NOT to be used for legal descriptions.



NO.	DATE	REVISIONS
1	10/11	REVISIONS
2	10/11	REVISIONS
3	10/11	REVISIONS
4	10/11	REVISIONS
5	10/11	REVISIONS
6	10/11	REVISIONS
7	10/11	REVISIONS
8	10/11	REVISIONS
9	10/11	REVISIONS
10	10/11	REVISIONS
11	10/11	REVISIONS
12	10/11	REVISIONS
13	10/11	REVISIONS
14	10/11	REVISIONS
15	10/11	REVISIONS
16	10/11	REVISIONS
17	10/11	REVISIONS
18	10/11	REVISIONS
19	10/11	REVISIONS
20	10/11	REVISIONS
21	10/11	REVISIONS
22	10/11	REVISIONS
23	10/11	REVISIONS
24	10/11	REVISIONS
25	10/11	REVISIONS
26	10/11	REVISIONS
27	10/11	REVISIONS
28	10/11	REVISIONS
29	10/11	REVISIONS
30	10/11	REVISIONS
31	10/11	REVISIONS
32	10/11	REVISIONS
33	10/11	REVISIONS
34	10/11	REVISIONS

M.S. Bk. 2009, Pg. 14 - 15 - Record of Survey for
The City of Woodland

M.S. Bk. 11, Pg. 71, 72 - Record of Survey
Woodland Mapping & Surveying Commission

P.M. Bk. 10, Pg. 32 - for St. John's United Church
of Christ # 3974

P.M. Bk. 12, Pg. 30, 31 - Parcel Map # 4072.

Deeds Bk. 40, Pg. 534 - Fisher's Add'n.

M.S. Bk. 7, Pg. 79 - Record of Survey
M.S. Bk. 7, Pg. 82 - Erickson Construction Co.

M.S. Bk. 11, Pg. 46 - R.O.S. for Yolo County Employees
Federal Credit Union.

P.M. Bk. 12, Pg. 30 - 31 - Pcl. Map # 4072

(formerly 6 - 01 & - 03)

CITY OF WOODLAND
Assessor's Map Bk. 6, Pg. 02
County of Yolo, Calif.

NOTE - Assessor's Block Number Shown in Ellipses.
Assessor's Parcel Number Shown in Circles.

10/11