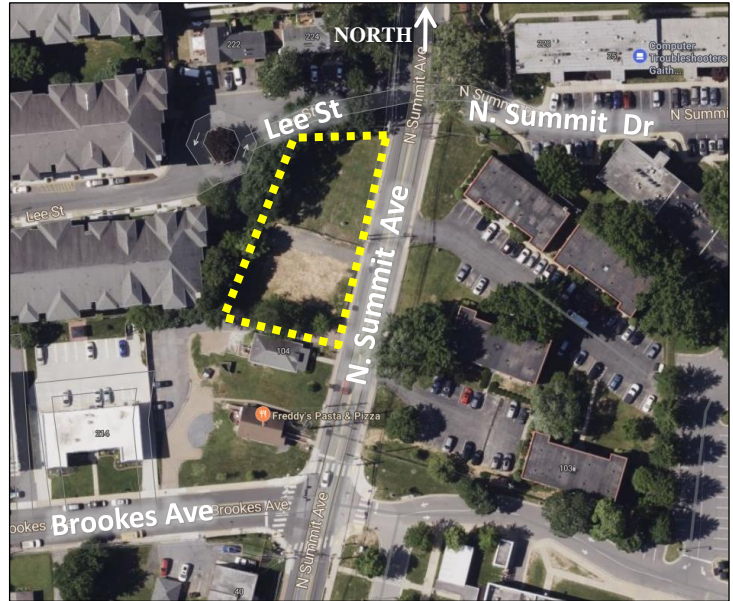


- **\$775,000**
- 17,678 square foot site is zoned CBD – Central Business District (City of Gaithersburg) intended for townhome development, retail or an office use.
- Corner location at the intersection of Lee Street with easy access to I-270 and Route 355.
- Walking distance to the historic Old Towne Gaithersburg shopping & restaurant district.

LAND FOR SALE



17,678 S.F. OF CBD (CENTRAL BUSINESS DISTRICT) ZONED LAND



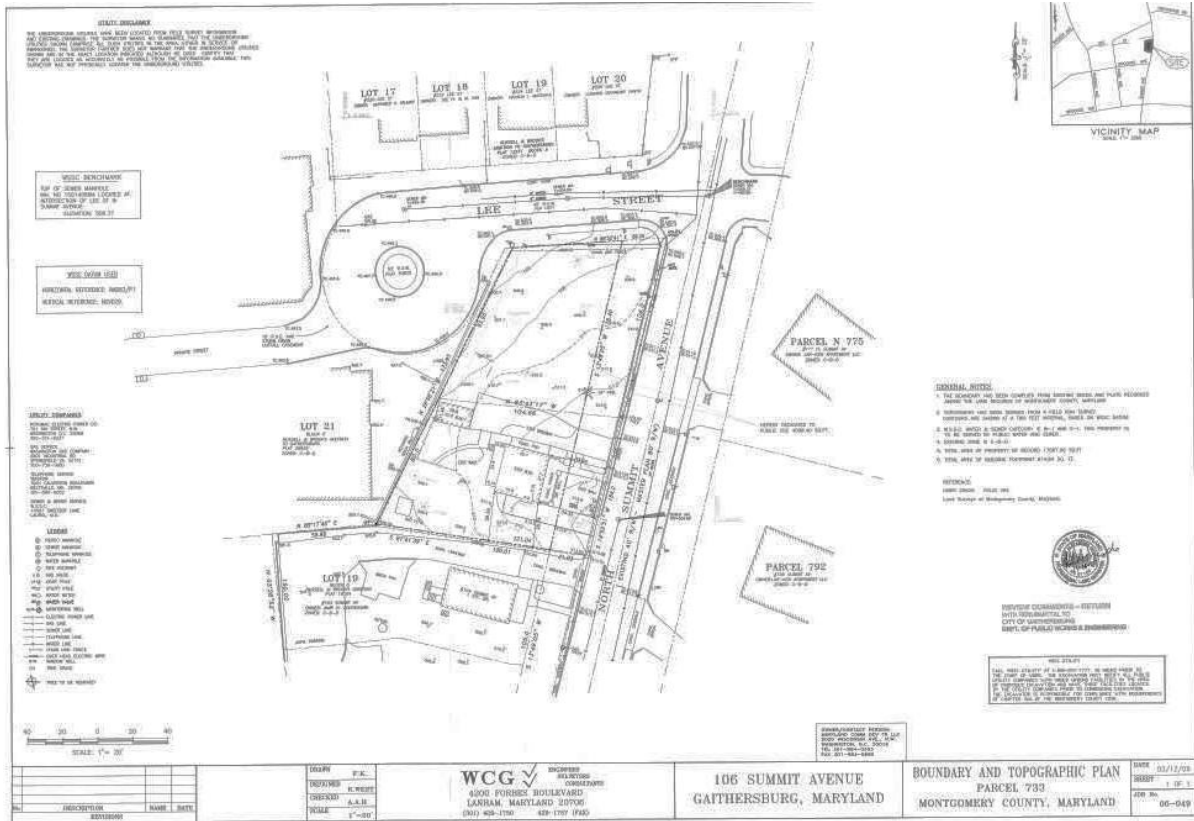
PLEASE CONTACT:

301.961.9696

Rick Kelly – Ext. 210

Bill Montrose – Ext. 203

Existing Site



Proposed Townhome Site Plan

