 **JLL** SEE A BRIGHTER WAY

# For lease

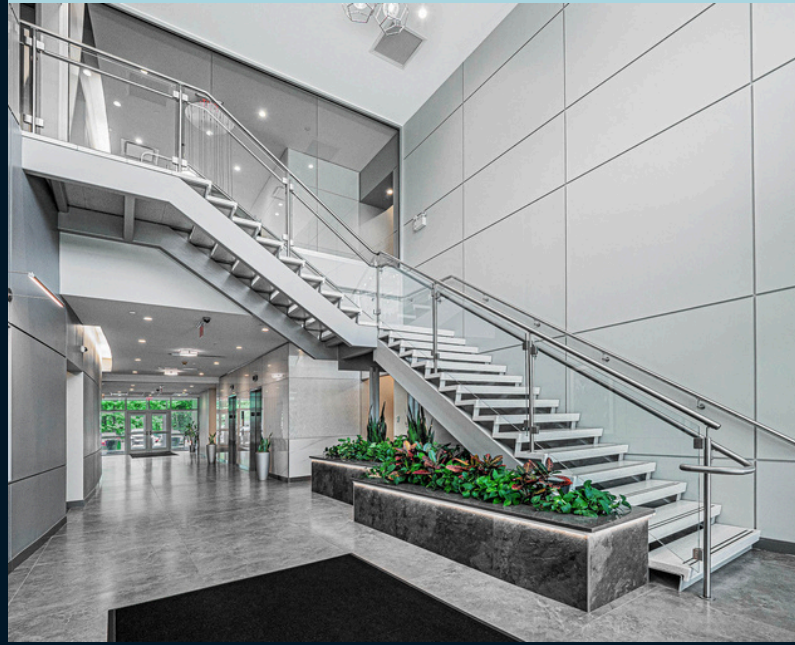
450 Plymouth Road  
Interchange Corporate Center  
Plymouth Meeting, PA

First floor: 11,233 SF  
Second floor: 5,045 SF

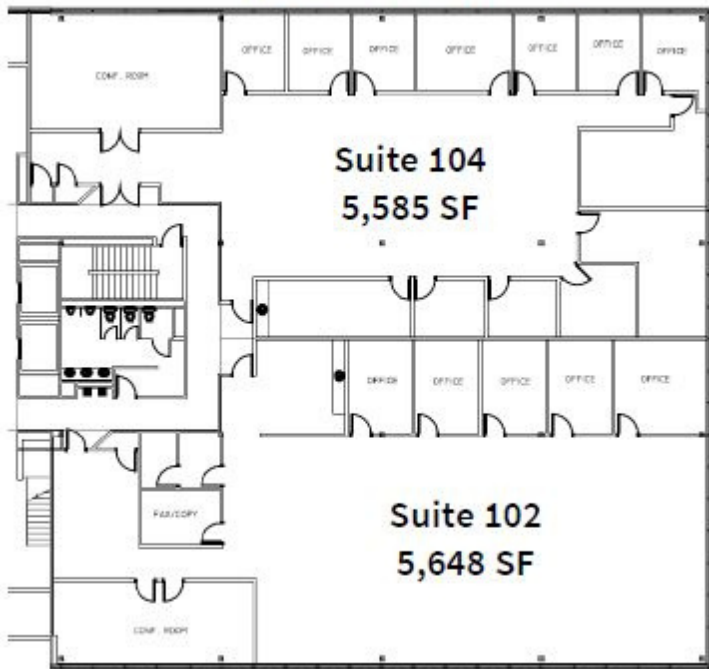
## Property specifications

- Available immediately
- Fitness center in the building
- Two story atrium lobby with stone, steel and wood finishes
- State of the art energy management system
- Basement storage/humidity-controlled space
- Conveniently located to all major highways, public transportation, newly renovated Plymouth Meeting Mall, shops and restaurants

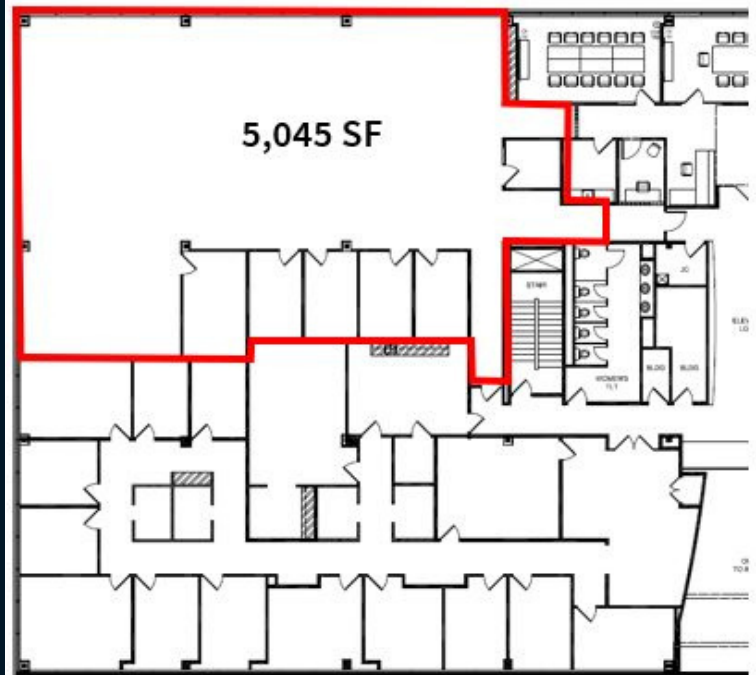
## 450 Plymouth Road Interchange Corporate Center Plymouth Meeting



First Floor - 11,233 SF



Second Floor



**John Perkins**  
john.perkins@jll.com  
+1 610 715 1815

**Jones Lang LaSalle Brokerage, Inc.**  
550 E. Swedesford Road, Suite 260, Wayne, PA 19087  
+1 610 249 2255