



4% COOPERATING
BROKER FEE!*

47,088 SF AVAILABLE FOR LEASE

PREMIER WAREHOUSE DISTRIBUTION FACILITY AVAILABLE
Rexford Commerce Crossing - 5637 E. 61st Street | Commerce, CA



www.rexfordcommercecrossing.com

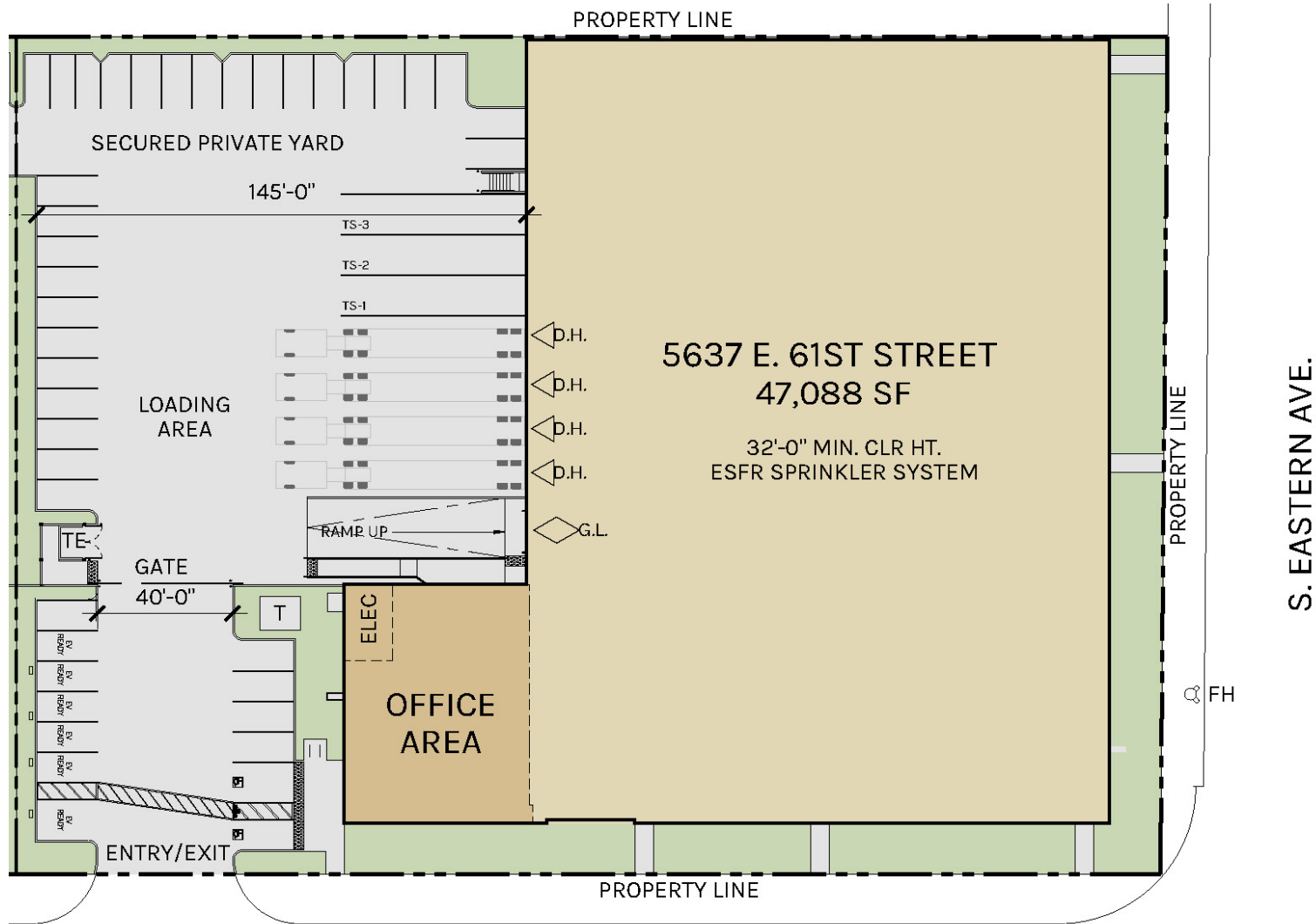




WAREHOUSE DISTRIBUTION FACILITY

- Brand New Class A 2-Story Office - 6,138 SF
- 4 Dock High Doors - 1 Grade Level Door
- 32' Clearance
- Fully Sprinklered ESFR K25 @ 25 PSI
- 3000 Amp Capacity**
***900 Amp Service Upon Completion. 3000 Amp Capacity.*
- 3 Trailer Parking Stalls (12' X 54')
- Excellent Access to (710), (5) & (60) Freeways
- **4% Cooperating Broker Fee***
**Subject to Final Deal Terms - Call Broker for Details*

- LEED Silver - Features Include:
- Motion Sensored LED Lighting Throughout
- Water Efficient Landscaping & Irrigation System
- Warehouse Exhaust Fans With Night Flushing Capability
- Thermoplastic Polyolefin (TPO) Reflective Roof
- EV Charging Ready Stalls

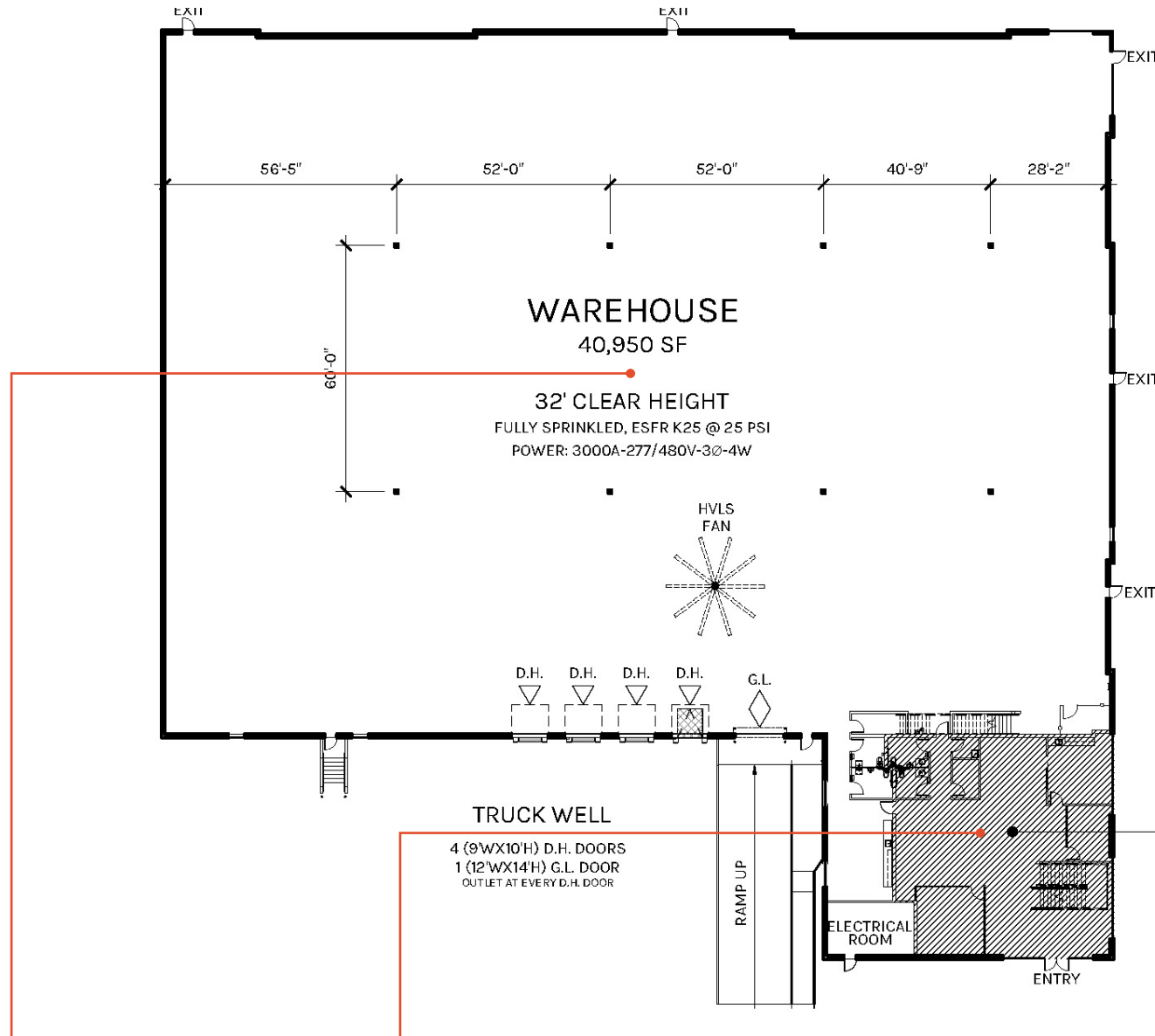


WAREHOUSE
40,950 SF

OFFICE
6,138 SF

TOTAL
47,088 SF

PLAN LAYOUT SUBJECT TO FIELD CONDITIONS AND MAY DIFFER FROM PLAN AS SHOWN. ALL INFORMATION PRESENTED ON THIS DRAWING IS PRESUMED TO BE ACCURATE, HOWEVER TENANT SHOULD VERIFY PERTINENT INFORMATION PRIOR TO COMMITTING TO A LEASE. ANY FURNITURE OR APPLIANCES SHOWN ON PLAN ARE FOR CONCEPT ONLY AND WILL BE TENANT PROVIDED.



WAREHOUSE
40,950 SF

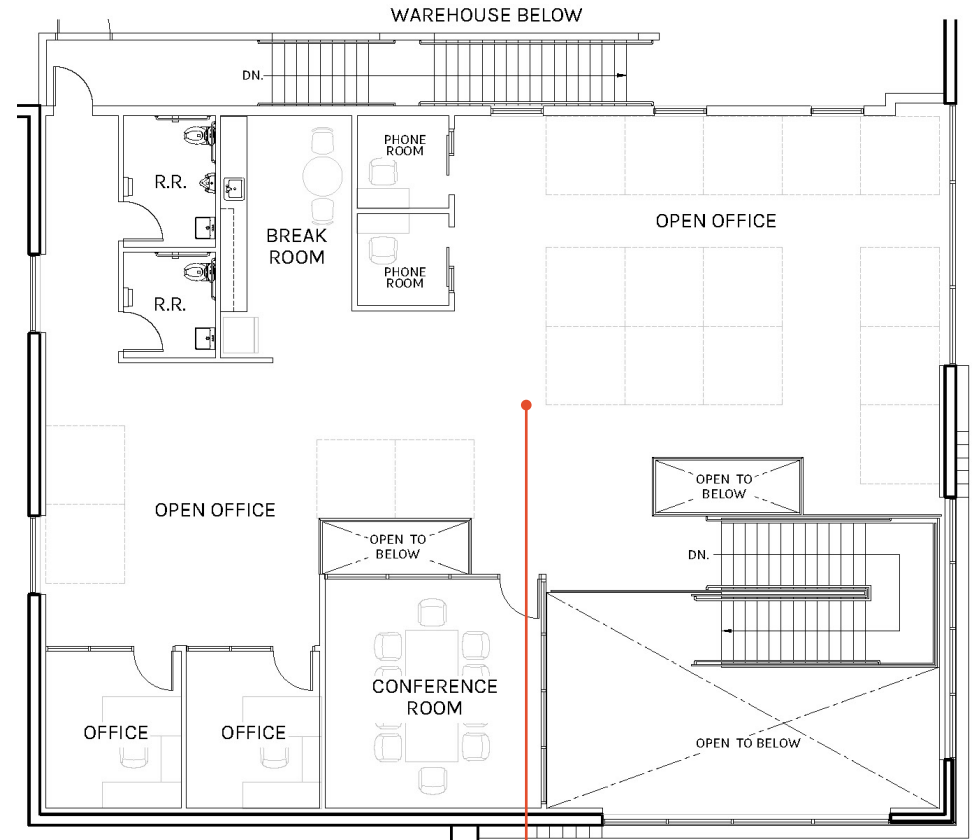
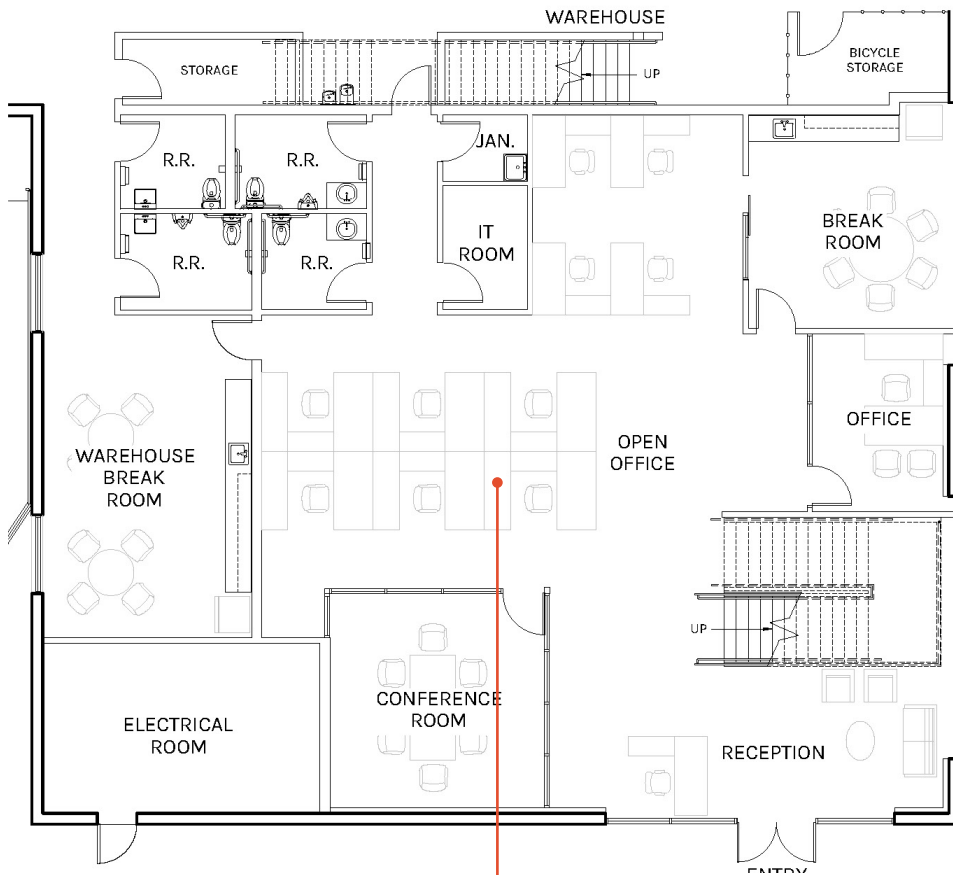
OFFICE
6,138 SF

TOTAL
47,088 SF

PLAN LAYOUT SUBJECT TO FIELD CONDITIONS AND MAY DIFFER FROM PLAN AS SHOWN. ALL INFORMATION PRESENTED ON THIS DRAWING IS PRESUMED TO BE ACCURATE, HOWEVER TENANT SHOULD VERIFY PERTINENT INFORMATION PRIOR TO COMMITTING TO A LEASE. ANY FURNITURE OR APPLIANCES SHOWN ON PLAN ARE FOR CONCEPT ONLY AND WILL BE TENANT PROVIDED.

Office Floor Plan

REXFORD COMMERCE CROSSING
5637 E. 61ST STREET



GROUND FLOOR
2,859 SF

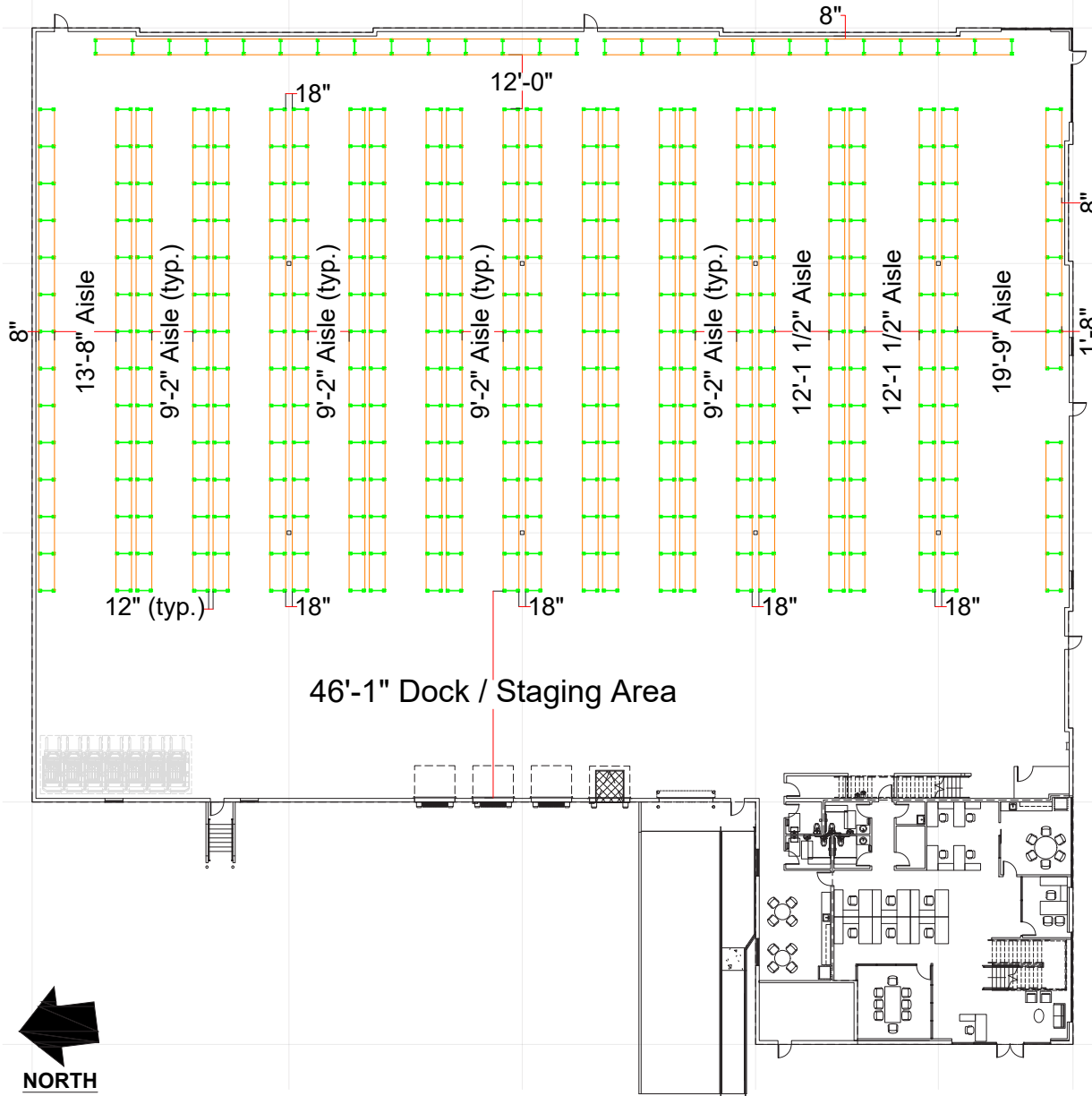
MEZZANINE
3,279 SF

TOTAL
6,138 SF

PLAN LAYOUT SUBJECT TO FIELD CONDITIONS AND MAY DIFFER FROM PLAN AS SHOWN. ALL INFORMATION PRESENTED ON THIS DRAWING IS PRESUMED TO BE ACCURATE, HOWEVER TENANT SHOULD VERIFY PERTINENT INFORMATION PRIOR TO COMMITTING TO A LEASE. ANY FURNITURE OR APPLIANCES SHOWN ON PLAN ARE FOR CONCEPT ONLY AND WILL BE TENANT PROVIDED.

Sample Racking Plan

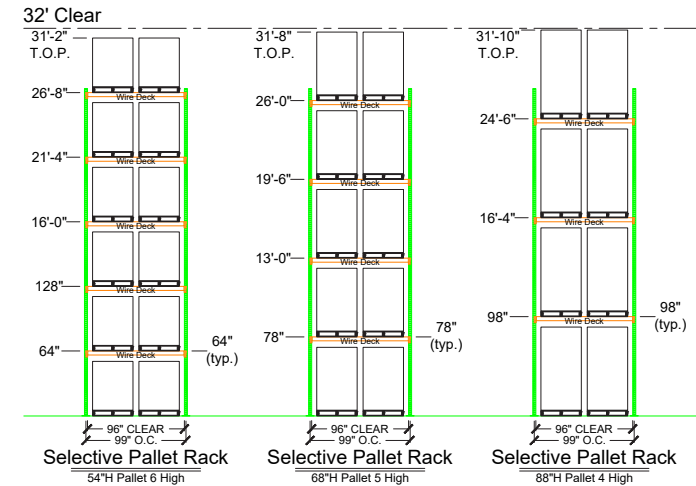
REXFORD COMMERCE CROSSING
5637 E. 61ST STREET



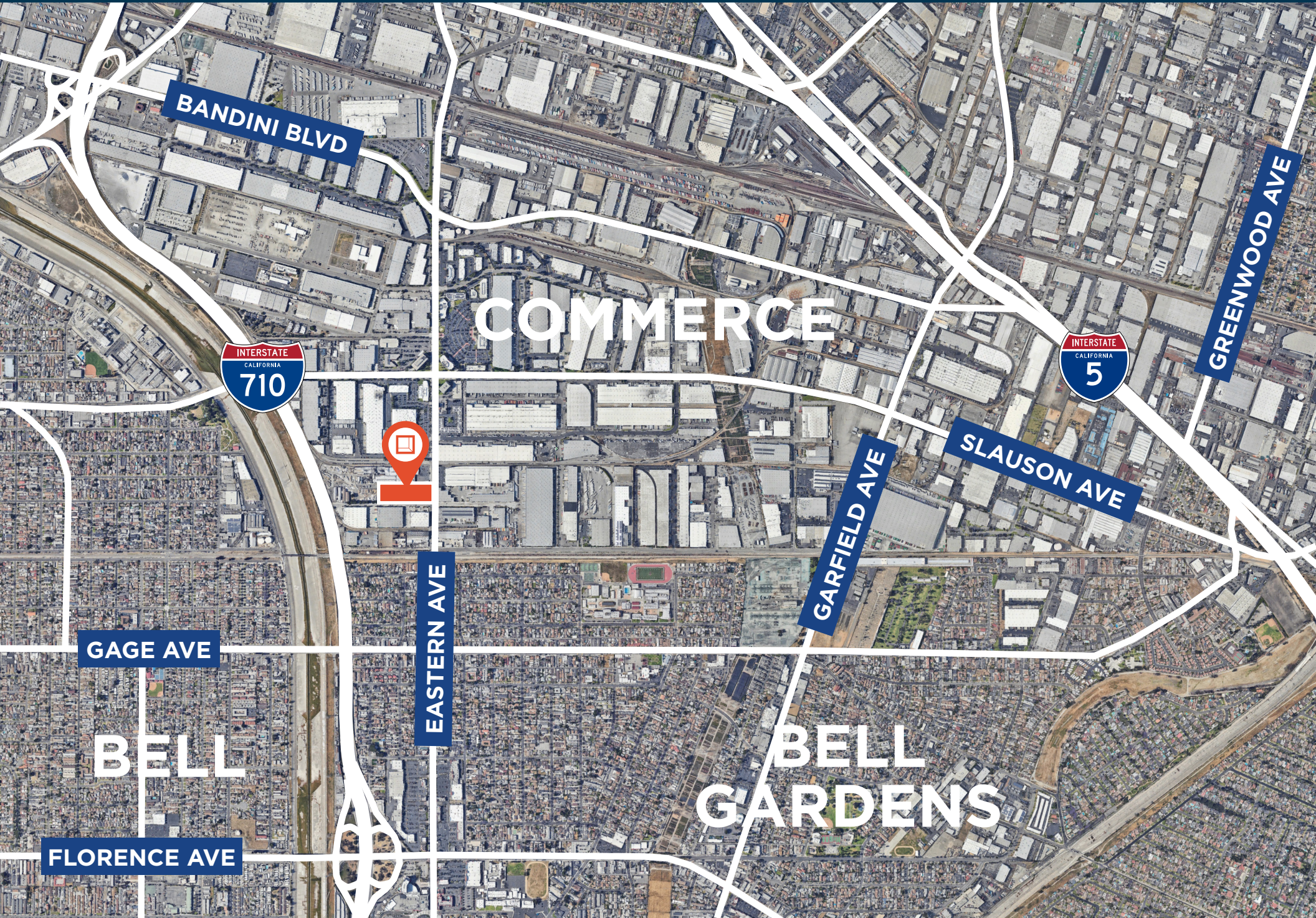
32' CLEAR HEIGHT

47,088 SQFT

Number of Bays	Pallet Height	Pallet Positions
334	54"	4,008
	68"	3,340
	88"	2,672



7351 Garden Grove Boulevard, Unit B • Garden Grove, CA 92841
Cell: (714) 743-4144 • Email: jmcghee@catalinais.com



BANDINI BLVD

COMMERCE

GREENWOOD AVE



GARFIELD AVE

SLAUSON AVE

GAGE AVE

EASTERN AVE

BELL

BELL GARDENS

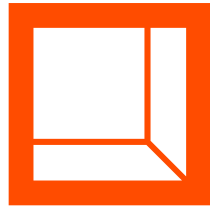
FLORENCE AVE

Location

REXFORD COMMERCE CROSSING 5637 E. 61ST STREET



1.0 Miles to (710) Freeway	2.7 Miles to (5) Freeway	4.8 Miles to (60) Freeway
5.2 Miles to (605) Freeway	6.5 Miles to (101) Freeway	8.5 Miles to Downtown Los Angeles
16 Miles to Port of Long Beach	18 Miles to Port of Los Angeles	19 Miles to Los Angeles International Airport



**Rexford
Industrial**

Leasing Contacts

JOHN MCMILLAN

Vice Chairman

t 310-491-2048

john.mcmillan@nmrk.com

CA RE License #01103292

JEFF SANITA

Executive Managing Director

t 310-491-2003

jeff.sanita@nmrk.com

CA RE License #01242202

DANNY WILLIAMS

Executive Managing Director

t 310-491-2061

danny.williams@nmrk.com

CA RE License #01776416

CONNOR REEVES

Senior Managing Director

t 310-491-2088

connor.reeves@nmrk.com

CA RE License #01983477

JOEY FARNEY

Associate

t 310-491-2007

joey.farney@nmrk.com

CA RE License #02218932

ANDREW CONROY

Transaction Manager

t 310-491-2085

andrew.conroy@nmrk.com

CA RE License #02143325

NEWMARK

Newmark

2301 Rosecrans Ave

Suite 4100

El Segundo, CA 90245

t 310-491-2000

nmrk.com

Corporate License #01355491

The information contained herein has been obtained from sources deemed reliable but has not been verified and no guarantee, warranty or representation, either express or implied, is made with respect to such information. Terms of sale or lease and availability are subject to change or withdrawal without notice.