



**AVAILABLE FOR BUILD TO SUIT LEASE**

# **SPRINGERS ROAD** | Logan Township, NJ

LOCATED AT INTERSECTION OF ROUTES 130 & 322  
AT THE BASE OF THE COMMODORE BARRY BRIDGE

**IOS SITE - 2.82 ACRES**

**FLEXIBLE OPTIONS**

Site can be configured several ways  
Ownership will construct an  
equipment building

**FOR MORE INFORMATION**

**Scott Mertz, SIOR**

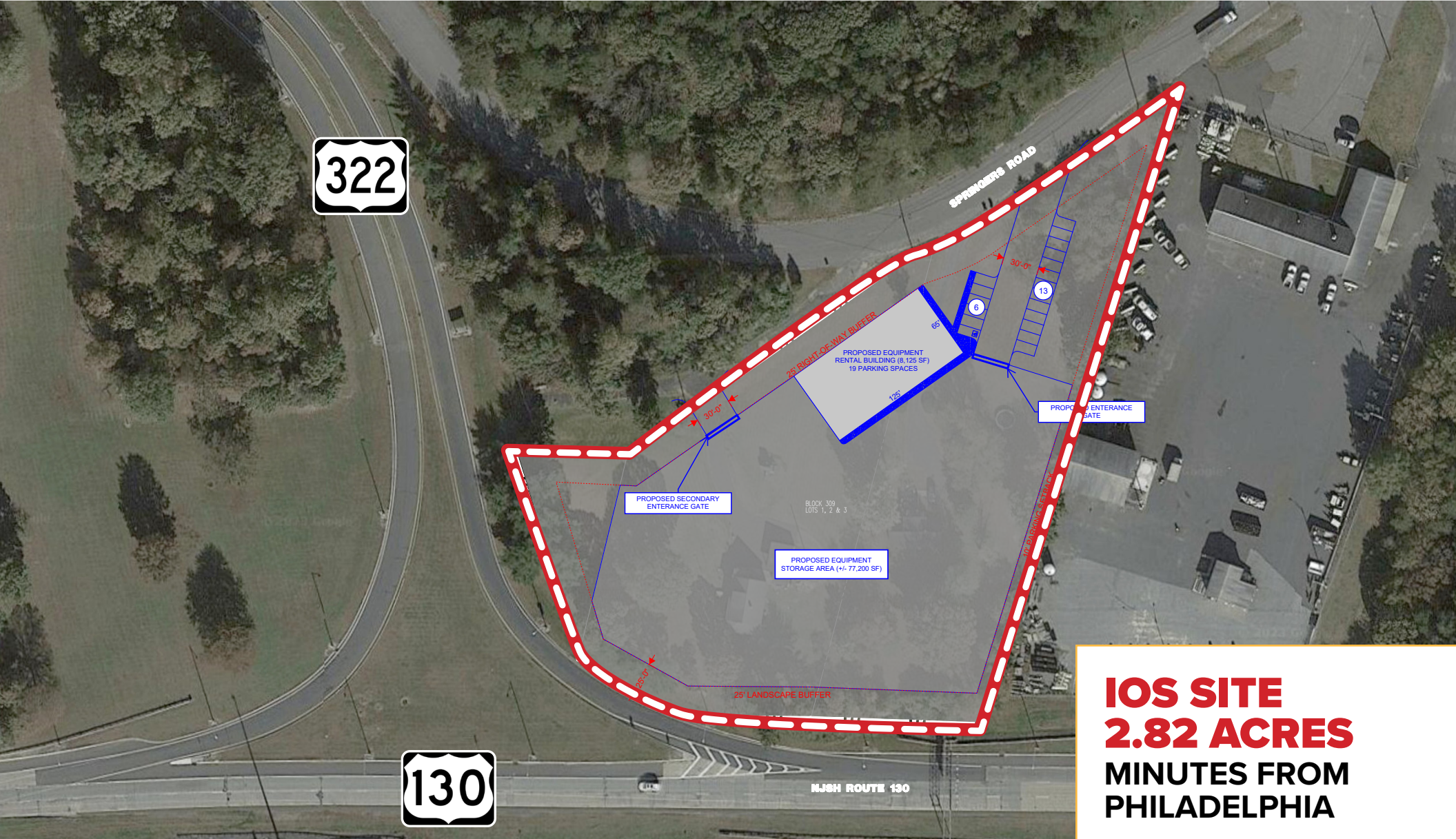
+1 856 802 6529

scott.mertz@naimertz.com

**Naimertz**

21 Roland Avenue | Mount Laurel, NJ 08054  
+1 856 234 9600 | naimertz.com





**IOS SITE**  
**2.82 ACRES**  
**MINUTES FROM**  
**PHILADELPHIA**

**AVAILABLE FOR BUILD TO SUIT LEASE**

**SPRINGERS ROAD** | Bridgeport, NJ

FOR MORE INFORMATION

Scott Mertz, SIOR

+1 856 802 6529

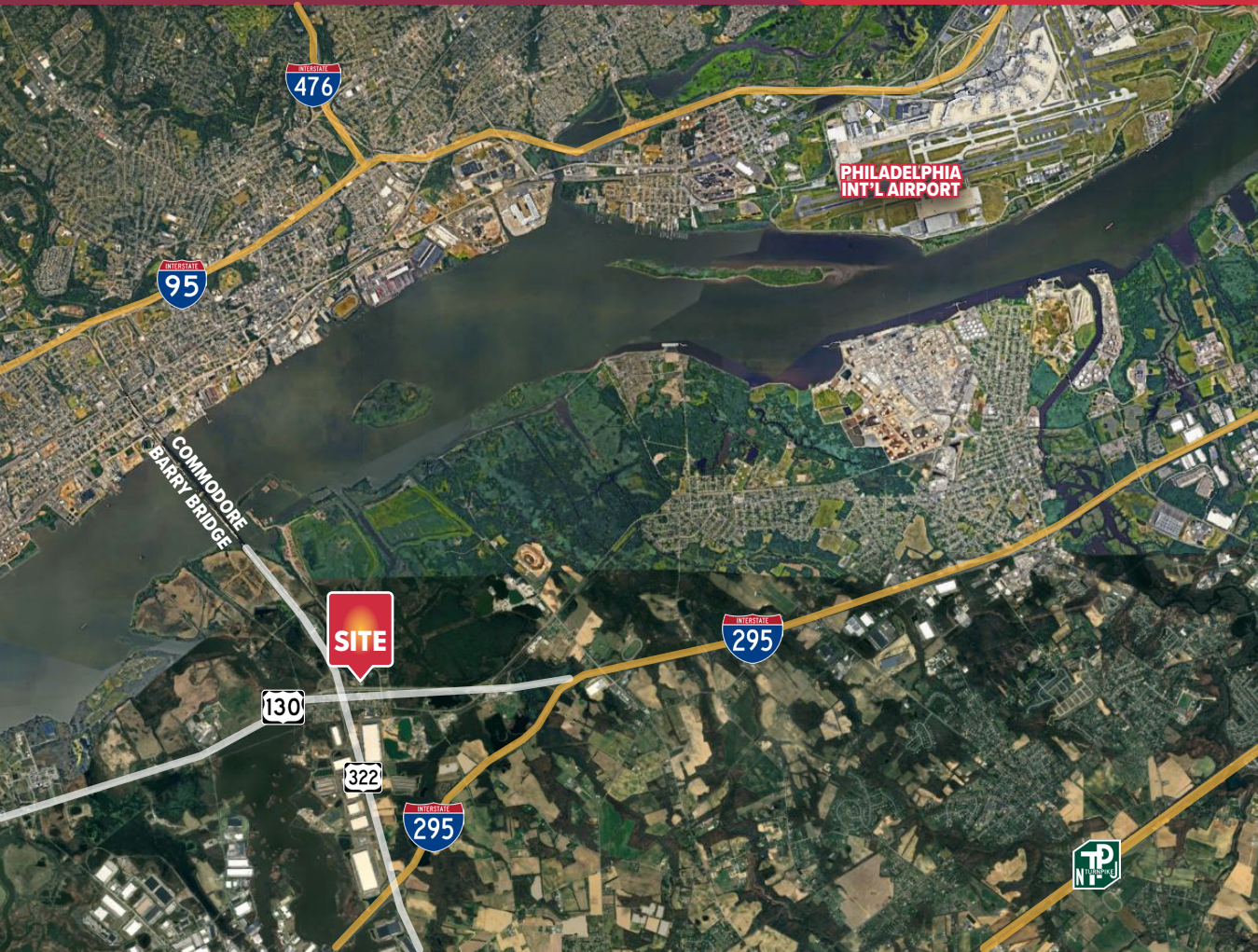
scott.mertz@naimertz.com

**Naimertz**

21 Roland Avenue | Mount Laurel, NJ 08054  
+1 856 234 9600 | naimertz.com



# LOCATION INFORMATION



## AVAILABLE FOR BUILD TO SUIT LEASE INDUSTRIAL OUTSIDE STORAGE (IOS) 2.82 ACRES

SPRINGERS ROAD | Bridgeport, NJ

### Distance to

Route 130	0.5 mi
Route 322	0.9 mi
Commodore Barry Bridge	1.4 mi
I-295 N (Exit 13)	2.4 mi
I-295 S (Exit 11)	3.1 mi
I-95 (Exit 4)	4.6 mi
NJ Turnpike (Exit 2)	5.9 mi
Philadelphia International Airport	11.9 mi

### FOR MORE INFORMATION

Scott Mertz, SIOR

+1 856 802 6529

[scott.mertz@naimertz.com](mailto:scott.mertz@naimertz.com)

# Naimertz

21 Roland Avenue | Mount Laurel, NJ 08054

+1 856 234 9600 | [naimertz.com](http://naimertz.com)

NO WARRANTY OR REPRESENTATION, EXPRESS OR IMPLIED, IS MADE AS TO THE ACCURACY OF THE INFORMATION CONTAINED HEREIN, AND THE SAME IS SUBMITTED SUBJECT TO ERRORS, OMISSIONS, CHANGE OF PRICE, RENTAL OR OTHER CONDITIONS, PRIOR SALE, LEASE OR FINANCING, OR WITHDRAWAL WITHOUT NOTICE, AND OF ANY SPECIAL LISTING CONDITIONS IMPOSED BY OUR PRINCIPALS NO WARRANTIES OR REPRESENTATIONS ARE MADE AS TO THE CONDITION OF THE PROPERTY OR ANY HAZARDS CONTAINED THEREIN ARE ANY TO BE IMPLIED.